



# Washington County

PLANNING & ZONING

**Eastern Panhandle WV GIS Users Group Meeting**  
**September 13, 2018**

**Washington County, Maryland**  
**Development Tracker**

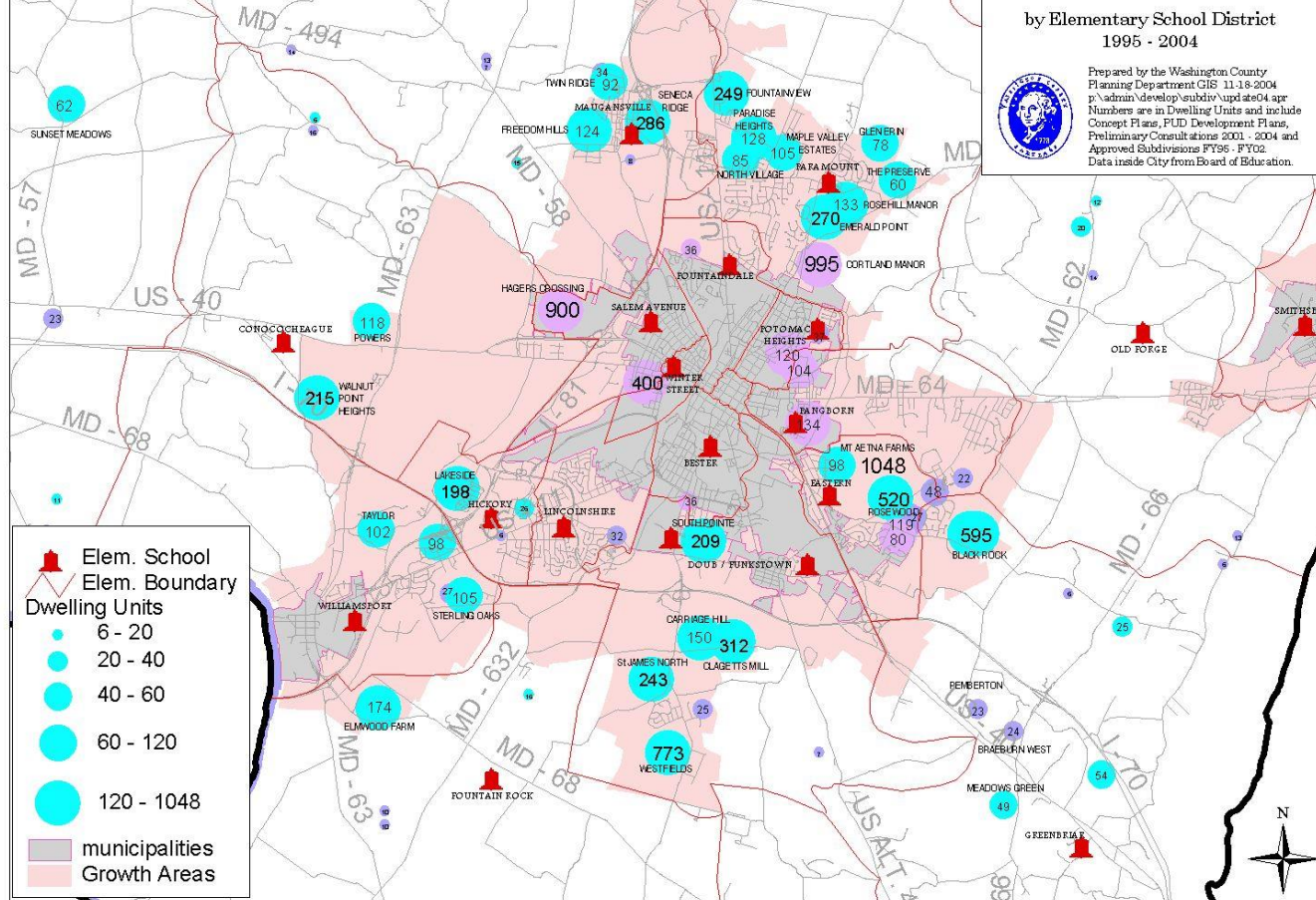
Presenter:

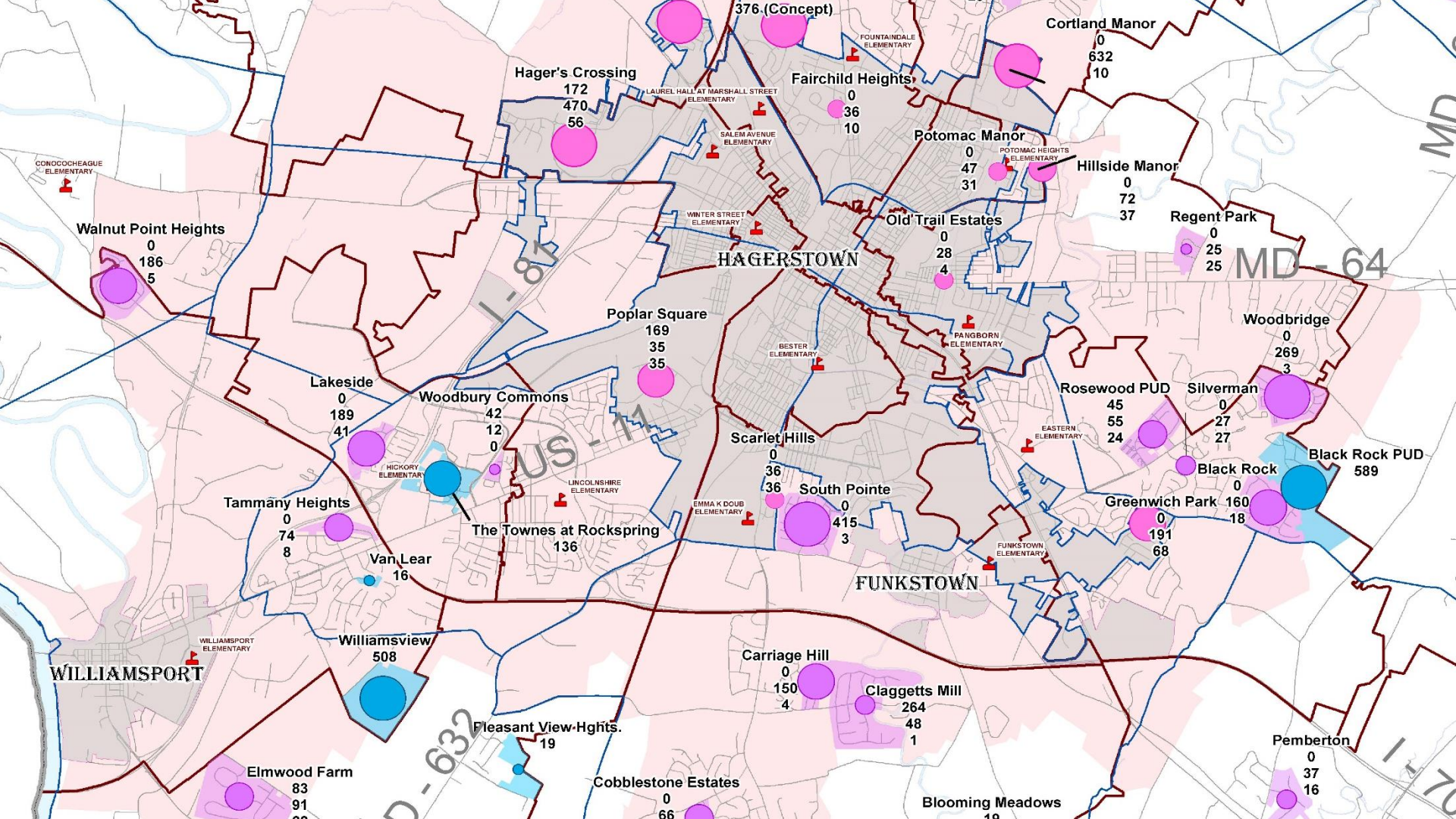
Meghan Jenkins, GISP, Geographic Information Systems Analyst

by Elementary School District  
1995 - 2004



Prepared by the Washington County  
Planning Department GIS 11-18-2004  
p:\admin\develop\subdiv\update04.apr  
Numbers are in Dwelling Units and include  
Concept Plans, PUD Development Plans,  
Preliminary Consultations 2001 - 2004 and  
Approved Subdivisions FY95 - FY02.  
Data inside City from Board of Education.







# Who's Asking?

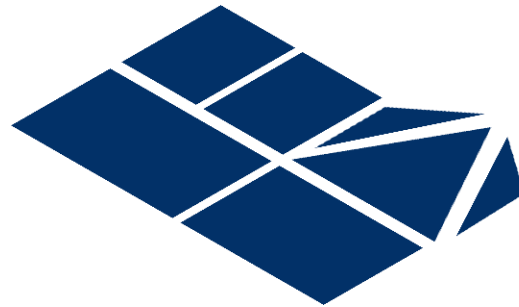


- County Comprehensive Planning
- School Board Facilities Planner
- Water and Sewer Planners
- City of Hagerstown
- Elected Officials
- The Public





- Parcel Data
- Plats
- New Record Tracking Software
- My own key to the data



# What did I need...



- Record Number
- Link to the public facing website
- Project Name
- Approval Date
- Status of the Record
- Type of Record
- Number of Lots
- Number of Units
- Commercial vs. Residential
- School District Info
- APFO Info
- Parcel Info



# How did we extract info?



- Accela runs on SQL server so we used Microsoft Report Builder to create a report
- Challenges with the data
  - Formatting
  - 1990's to present data
  - Entry errors
  - Schools data

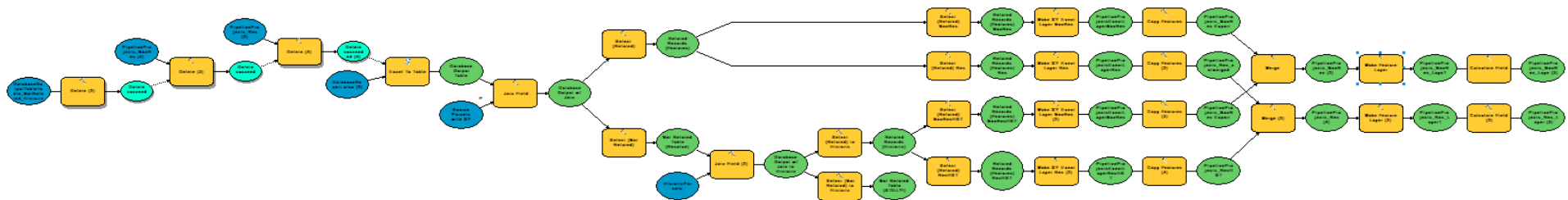
```
CASE (dbo.FN_GET_APP_SPEC_INFO(a.SERV_PROV_CODE, a.B1_PER_ID1, a.B1_PER_ID2, a.B1_PER_ID3, 'Middle School')) WHEN '1' THEN 'Hancock'
      WHEN '2' THEN 'Clear Spring'
      WHEN '3' THEN 'Western Heights'
      WHEN '4' THEN 'Springfield'
      WHEN '5' THEN 'Boonsboro'
      WHEN '6' THEN 'E Russell Hicks'
      WHEN '7' THEN 'Northern'
      WHEN '8' THEN 'Smithsburg'
      WHEN '01' THEN 'Hancock'
      WHEN '02' THEN 'Clear Spring'
      WHEN '03' THEN 'Western Heights'
      WHEN '04' THEN 'Springfield'
      WHEN '05' THEN 'Boonsboro'
      WHEN '06' THEN 'E Russell Hicks'
      WHEN '07' THEN 'Northern'
      WHEN '08' THEN 'Smithsburg'
      WHEN '' THEN 'No Data'
      WHEN Null THEN 'No Data'
      WHEN 'NO' THEN 'No Data'
      WHEN 'N/' THEN 'No Data'
ELSE (dbo.FN_GET_APP_SPEC_INFO(a.SERV_PROV_CODE, a.B1_PER_ID1, a.B1_PER_ID2, a.B1_PER_ID3, 'Middle School'))
END AS mSchool,
```

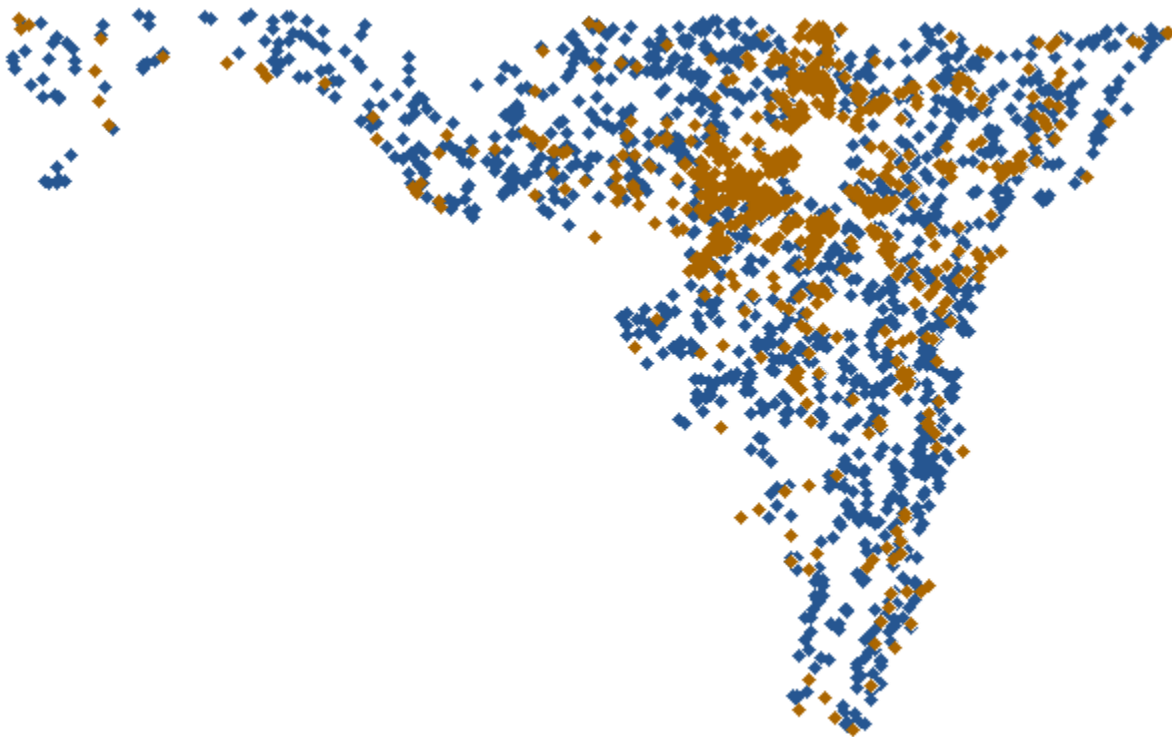
	A	B	C	D	E	F	G	H	I	J	K	L	M	N	O	P	Q	R
1	RecordNumber	GroupName	ID1	ID2	ID3	ProjectName	ApprovedDate	RecStatus	RecSubType	NumberLots	NumberUnits	ComResidential	ESchool	MSchool	HSchool	APFO	Parcel	ACALink
2	DP-13-001	LandDev	13HIS	00000	05CVX	BLACK ROCK P.U.D.-REV. PLAN	1/0/1900 12:00:00 AM	In Review	Development Plan	412	0	Final	Eastern	Smithsburg	Smithsburg	Not Exempt	18019485	<a href="https://accela.washco-md.net/CitizenAccess/Cap/CapDetail.aspx?Module=LandDev&amp;TabName=LandDev&amp;capID1=13HIS&amp;capID2=00000&amp;capID3=05CVX&amp;agencyCode=WASHCOMD&amp;IsToShowInspection=">https://accela.washco-md.net/CitizenAccess/Cap/CapDetail.aspx?Module=LandDev&amp;TabName=LandDev&amp;capID1=13HIS&amp;capID2=00000&amp;capID3=05CVX&amp;agencyCode=WASHCOMD&amp;IsToShowInspection=</a>
3	DP-18-001	LandDev	18LDV	00000	00205	Emerald Pointe PUD Phase 3 Sect. 2	1/0/1900 12:00:00 AM	In Review	Development Plan	261	261	Final	Paramount	Northern	North Hagerstown	Not Exempt	18018535	<a href="https://accela.washco-md.net/CitizenAccess/Cap/CapDetail.aspx?Module=LandDev&amp;TabName=LandDev&amp;capID1=18LDV&amp;capID2=00000&amp;capID3=00205&amp;agencyCode=WASHCOMD&amp;IsToShowInspection=">https://accela.washco-md.net/CitizenAccess/Cap/CapDetail.aspx?Module=LandDev&amp;TabName=LandDev&amp;capID1=18LDV&amp;capID2=00000&amp;capID3=00205&amp;agencyCode=WASHCOMD&amp;IsToShowInspection=</a>
	DP-97-001	LandDev	97HIS	00000	05CW1	ROSEWOOD ESTATES P U D	10/23/1998 12:00:00 AM	Approved	Development Plan	362	520	Final	Pangborn	E Russell Hicks	South Hagerstown	Not Exempt	18030764	<a href="https://accela.washco-md.net/CitizenAccess/Cap/CapDetail.aspx?Module=LandDev&amp;TabName=LandDev&amp;capID1=97HIS&amp;capID2=00000&amp;capID3=05CW1&amp;agencyCode=WASHCOMD&amp;IsToShowInspection=">https://accela.washco-md.net/CitizenAccess/Cap/CapDetail.aspx?Module=LandDev&amp;TabName=LandDev&amp;capID1=97HIS&amp;capID2=00000&amp;capID3=05CW1&amp;agencyCode=WASHCOMD&amp;IsToShowInspection=</a>





1. Delete existing files
2. Import the newly exported table
3. Join to parcels
  1. If it doesn't join it goes against the historic parcels
  2. If it still doesn't join after that I have it output a table so I can eventually find and fix these
4. Separates the data into residential and commercial based on a series of selection criteria
5. Merges the historic matches and the ones that matched existing parcels back together as commercial and residential outputs
6. To keep the date field happy those then have the date if its ApprovedDate = date '1899-12-30 00:00:00' go to Null (these have no approval date yet)







# Development in Washington County, MD

A visual guide to under review and approved residential and commercial development.







Washington County, Maryland Government began to review subdivision plats as early as 1964. Today the [Division of Plan Review & Permitting](#) reviews both residential and commercial subdivisions as well as Land Use Plans such as site plans. They also administer the zoning ordinance for the county.



80 W. Baltimore Street, Hagerstown, MD - County Administrative Annex

The [Washington County Planning Commission](#) supported by the [Department of Planning and Zoning](#), reviews and approves subdivision plats, forest conservation plans, site plans and development plans. They also advise the [Board of County Commissioners](#) on rezoning requests, ordinance text amendments and adoption of County ordinances.





Changes Have Occurred Over Time...

1980 Aerial Image

Area of Valley Mall, Interstate  
81 Exit 5

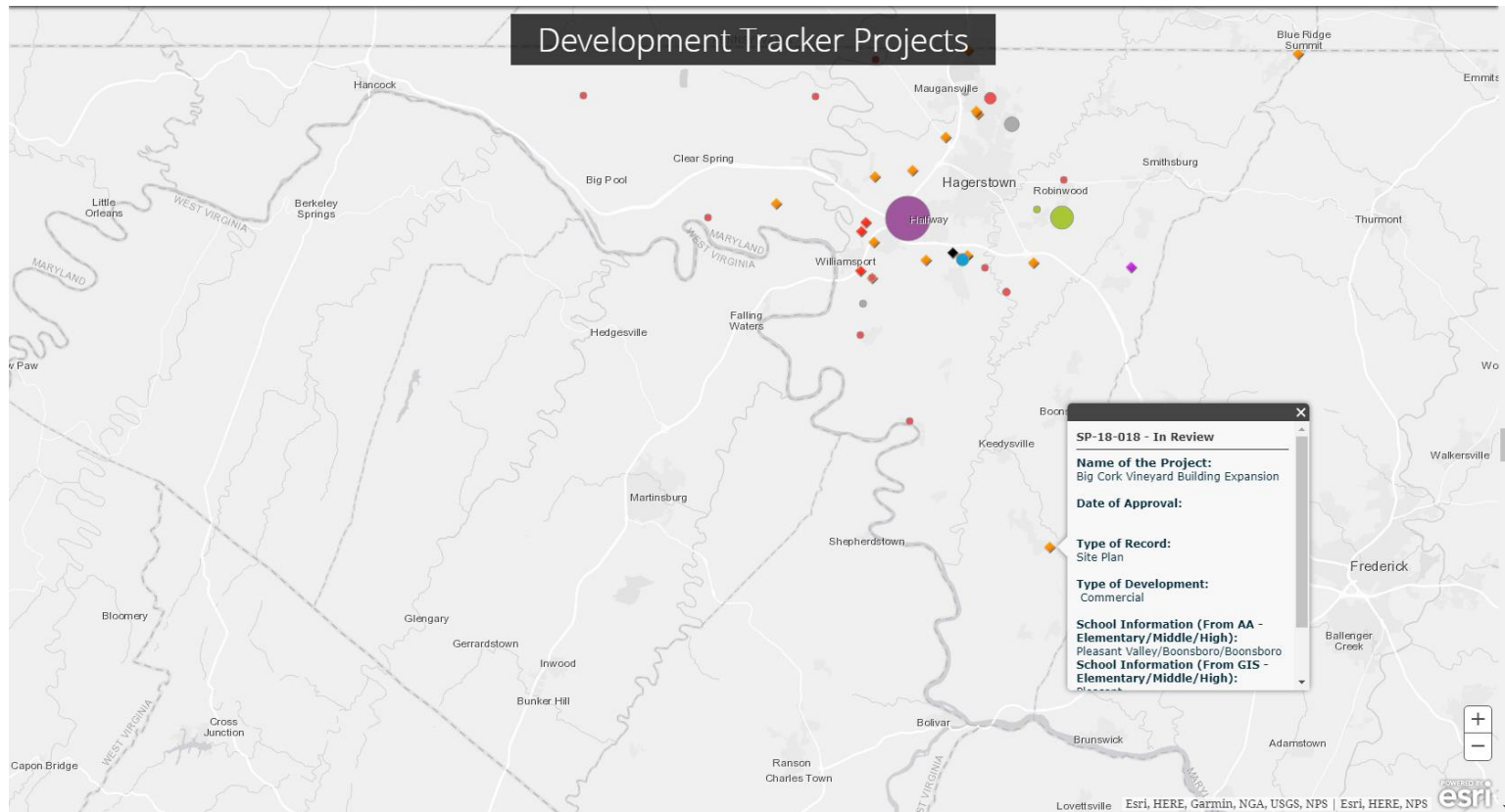


# Cascade Components (cont.)

Washington County, Maryland  
Development Tracker









Keep Exploring...

Consider Visiting More Washington  
County, MD Web Maps. Follow the Links  
Below:

[Protected Lands](#)

[Historic Sites](#)

[Zoning and Parcel Locator](#)

# Welcome to the Development Tracker!

**DISCLAIMER:** This map was created by the Washington County Planning Department and is intended to help visualize data held within the Accela environment. The web map includes queried data which is for informational purposes ONLY. The map is not guaranteed by Washington County Maryland to be free of errors including errors of omission, commission, positional accuracy or any attributes associated with the Accela record. This data DOES NOT replace any plans on file with the Division of Plan Review & Permitting and all data should be verified using the relevant permits, plans, plats and other recorded legal documents by the user.

The plan review data included in this story are updated monthly (as available) and spans from 1994 to Present.

This map was created by:

## The Department of Planning and Zoning *Geographic Information Systems*

100 W. Washington Street

Hagerstown, MD 21740

Phone: 240-313-2430

Fax: 240-313-2431

TTY Users: MD Relay 711

Contact: [Email](#) | [Accela Citizen Access](#) | [Washington County, Maryland](#)

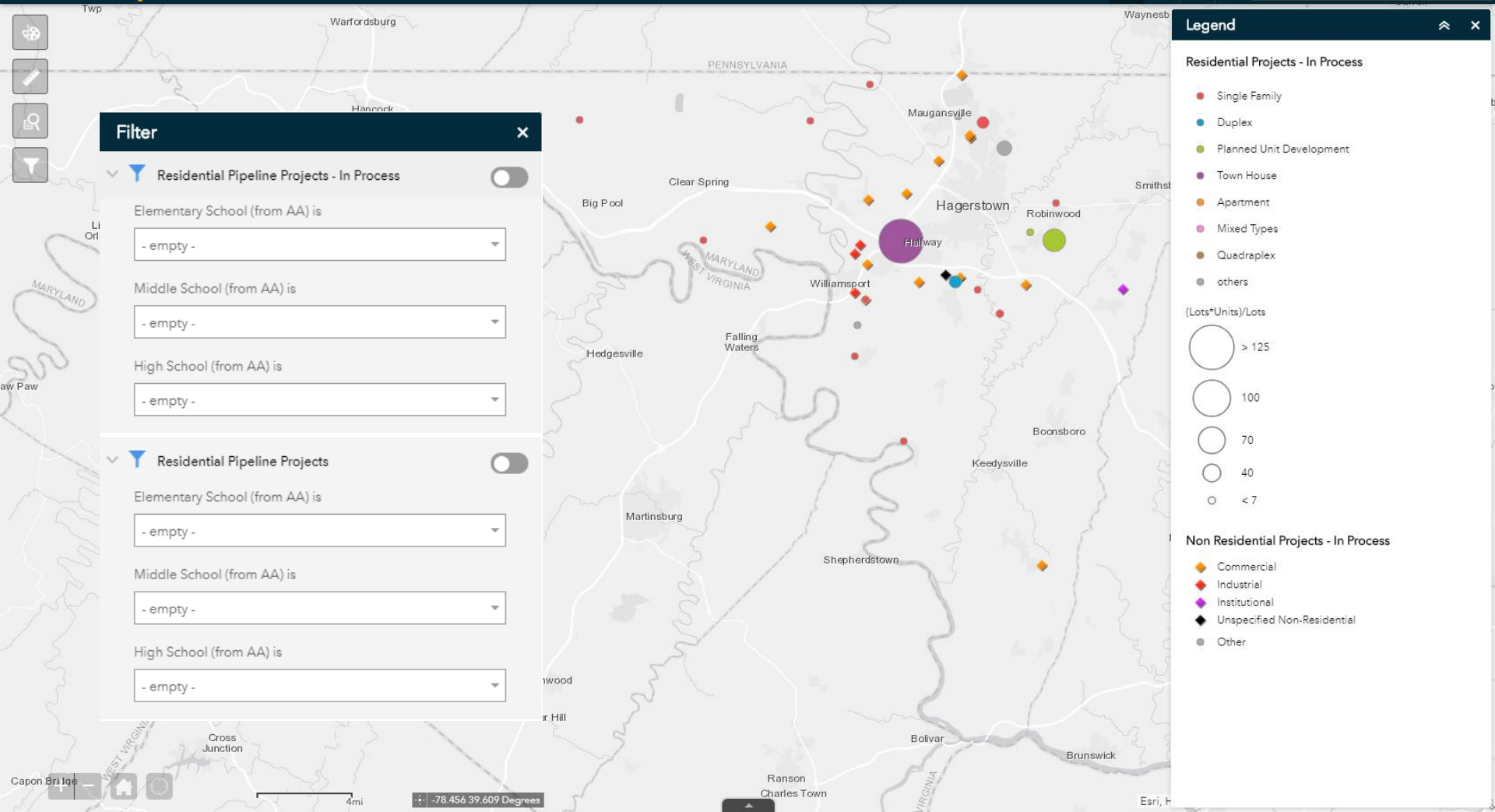
*Questions? About a specific subdivision, plan or the plan review process, please visit:*

[Division of Plan Review and Permitting - Plan Review](#)

Click "Confirm" in the lower Right to continue to the map.

Confirm





### Filter

#### Residential Pipeline Projects - In Process

Elementary School (from AA) is

- empty -

Middle School (from AA) is

- empty -

High School (from AA) is

- empty -

#### Residential Pipeline Projects

Elementary School (from AA) is

- empty -

Middle School (from AA) is

- empty -

High School (from AA) is

- empty -

# Conclusion...



## Advantages:

- More Easily Updated
- Less Manual Manipulation
- Public Facing Products
- Interactive
- More modern than .pdf

## Disadvantages:

- Information Overload
- Still Missing the Permit Portion



## Demos

[Development Cascade](#)

[Development Tracker JS](#)



# Stay Connected

Washington County, Maryland  
Development Tracker



## Meghan Jenkins Department of Planning and Zoning

Washington County, MD

100 W. Washington Street, Suite 2600

Hagerstown, Maryland

P: 240.313.2439

E: [mjenkins@washco-md.net](mailto:mjenkins@washco-md.net)

## Follow Us:



WashingtonCountyMD



@WashingtonCoMD



WashingtonCountyMD

[washco-md.net](http://washco-md.net)

September 13, 2018