

Eastern Panhandle GIS Users Group Meeting - West Virginia, September 2019

Rose Saville-Iksic & Christine Iksic - Precision Laser & Instrument

Inches for Everyone, Everywhere

Overview

- Catalyst On Demand
- What's new in TerraFlex
- Trimble InSphere → Trimble Connect
- Questions



Catalyst Product & Solution Overview



The Product

[Trimble Catalyst On Demand](#)

The Solution

Flexible and **on demand** access to GNSS **accuracy down to one centimeter** in the field for teams of any size - from **single users**, right up to **enterprise-wide deployments**.

The Primary Advantage

Trimble Catalyst On Demand **solves your field accuracy challenges** by **equipping your entire field fleet** with simple and cost-effective access to **Centimeter-accurate positioning, on demand**.

Software GNSS. Seriously.

Yesterday your phone could tell you where you were within a few meters. Today, with Trimble Catalyst, your phone can tell you where you are within just a few centimeters.

Catalyst features a powerful antenna that plugs directly into your Android phone or tablet's USB port. Once it's linked to cloud services from the Trimble Connect platform, you can sync and share your position and the things you map.

And, since Catalyst's revolutionary technology features a software GNSS receiver, the up front cost to purchase the solution is dramatically reduced. So get ready to get insanely close to your world. Whenever, wherever, you want to.

- ▶ On-demand subscription service
- ▶ 4 levels of accuracy to choose from
- ▶ Use with Trimble or 3rd party apps
- ▶ Works on Android smart phones and tablets

Accuracy on-demand.

Whether you're mapping a new subdivision, inspecting utilities, or simply doing some landscaping at your house Trimble Catalyst is ready to go to work whenever you need it.



Choose a
Trimble Catalyst
enabled app



Plug the Catalyst DA1 antenna into your Android phone or tablet's USB port



Select a subscription
based on your accuracy needs

Get it from the most trusted brand in GNSS.

Shop now at **Catalyst.Trimble.com** and connect with your local Trimble Distributor to find out more.

What is Catalyst On Demand?

An hourly, pay-per-use payment model for Trimble Catalyst



1 Meter
Monthly
Subscription
(Unlimited Use)

US\$40/user
Per Month



Sub-Meter
Monthly
Subscription
(Unlimited Use)

US\$120/user
Per Month



Sub-Meter
Monthly
Subscription
(Unlimited Use)

US\$200/user
Per Month



Precision
Monthly
Subscription
(Unlimited Use)

US\$350/user
Per Month



**Precision
On Demand**
Hourly
(Pay-per-use)

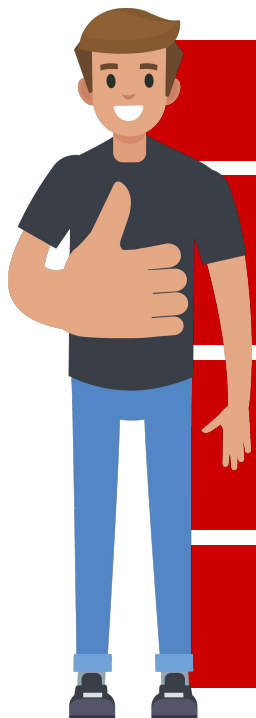
US\$10
Per Hour

Customers

- Individual users
- Medium-sized companies
- Larger fleets and enterprise-wide deployments
- Especially those who:
 - Can not predict when and how often users will use GNSS
 - Need the tool to be ready On Demand
 - Can't justify or don't want to pay a monthly per-user fee
 - Have varied usage across the organisation (mix of heavy/light use)
 - Want low accuracy most of the time, high accuracy some of the time
 - Will use the system less than only a few hours per week per user



Features & benefits

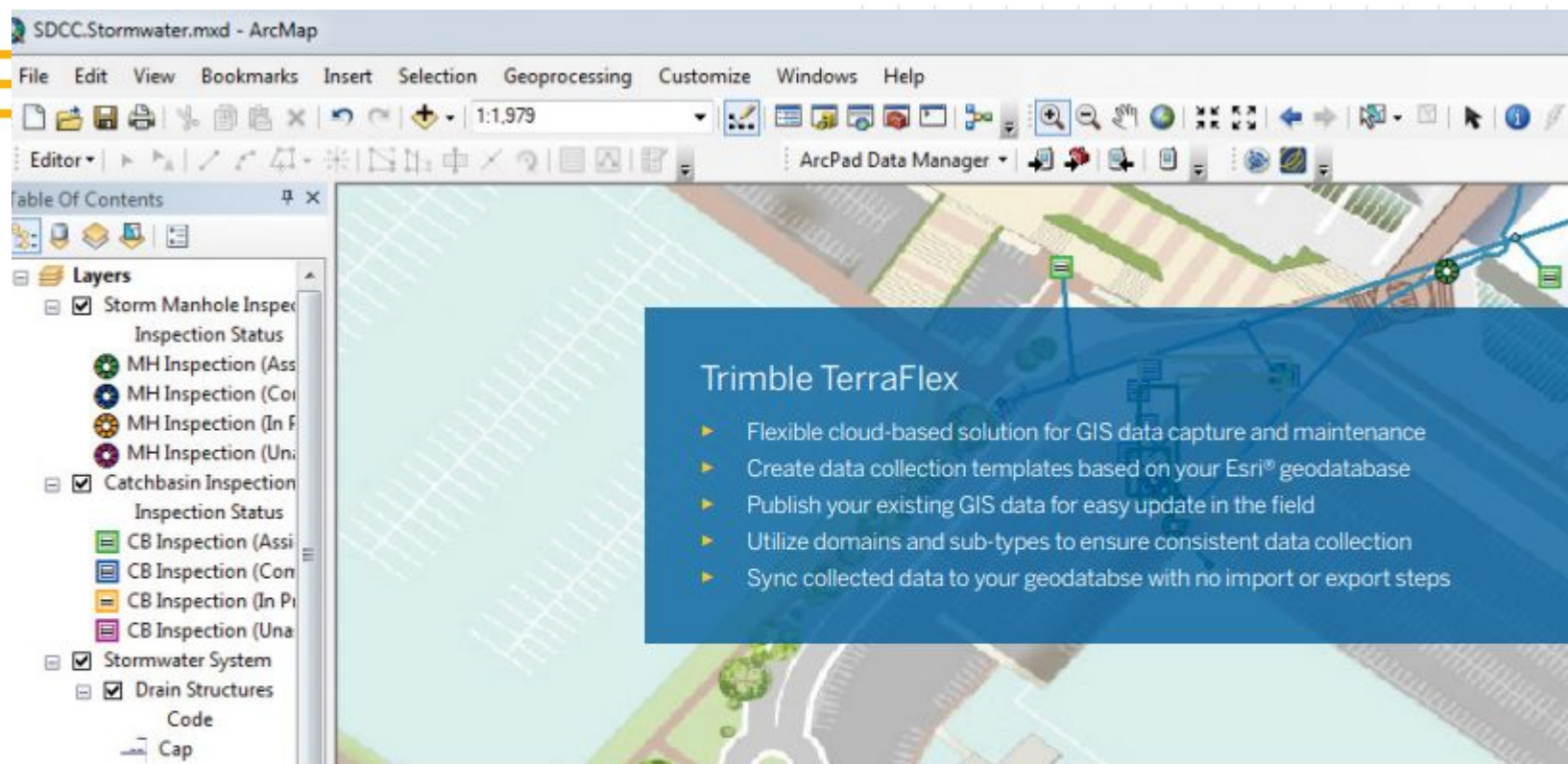


Customer Challenge	Solution Feature	Customer Benefit
My needs for high accuracy GNSS change all the time. Sometimes I need many crews on site, at other times, my demand is much lower.	Pay per use payment model.	Stay completely in control of costs, pay upfront, and only top-up as needed..
My field crew is large and they don't use GNSS often enough to justify a monthly subscription for each team member.	Share one account between an unlimited number of users	Usage based pricing scales economically from 1 user to many users all sharing a single account.
I want to make sure everyone who should have access to the service does, and no-one who does	Unlimited user & domain-level access	Spend less time managing licenses, and stay in complete control over who can use your account.

Buying Catalyst On Demand

Description	List (USD)
Catalyst Precision On Demand 10 Hour Pack	\$100

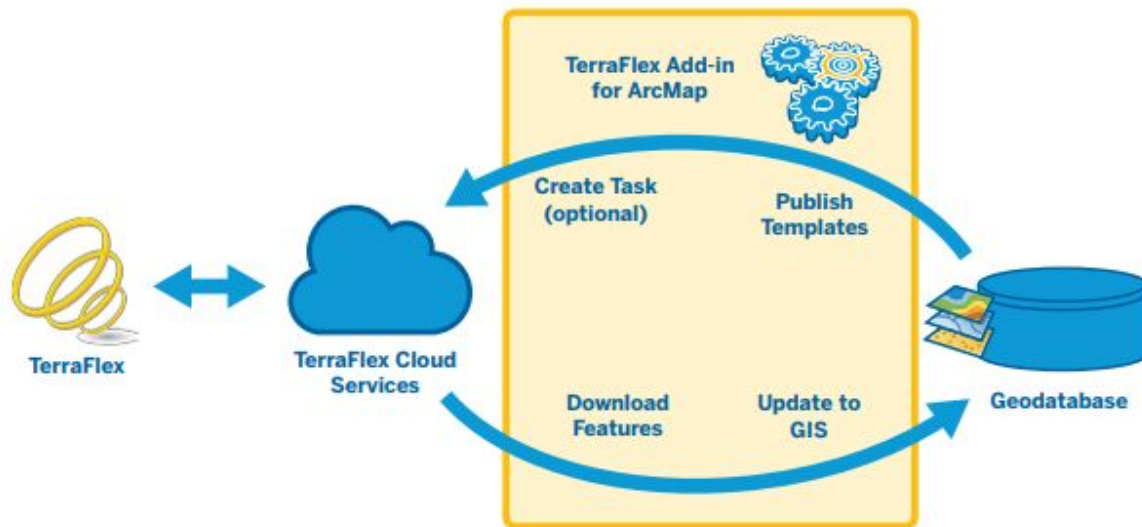
- Catalyst Precision On Demand 'Hours'
- Purchased in 'packs' of 10 hours
- Minimum purchase 1x 10 hour pack, No maximum purchase/assignment
- Buy packs in any increment of 10 hours (10h, 100h, 510h, etc.)
- You can top-up at any time
- List price: \$100 for 10 hours (i.e. \$10/hour), includes Trimble Corrections Hub services
- Performance level: Catalyst Precision (1 cm best accuracy)
- Customer service term: 12 months* from purchase to consume hours
- (*Customer has 90 days to activate purchased packs before they are auto-activated)



Trimble TerraFlex: Equipped for Esri

Direct Esri Integration with the TerraFlex add-in for ArcMap

Trimble® TerraFlex™ is an effective tool for supporting a cloud and mobile workflow with your organization's on-premise ArcGIS® infrastructure. With the TerraFlex add-in for ArcMap®, TerraFlex integrates with your Esri geodatabase to streamline field data collection for greater productivity and data quality.



© 2017 Trimble Inc. All rights reserved. Trimble and the Globe & Triangle logo are trademarks of Trimble Inc., registered in the United States and in other countries. TerraFlex is a trademark of Trimble Inc. All other trademarks are the property of their respective owners. PN 022535-326 (07/17)

Learn more at www.trimble.com/terraflex

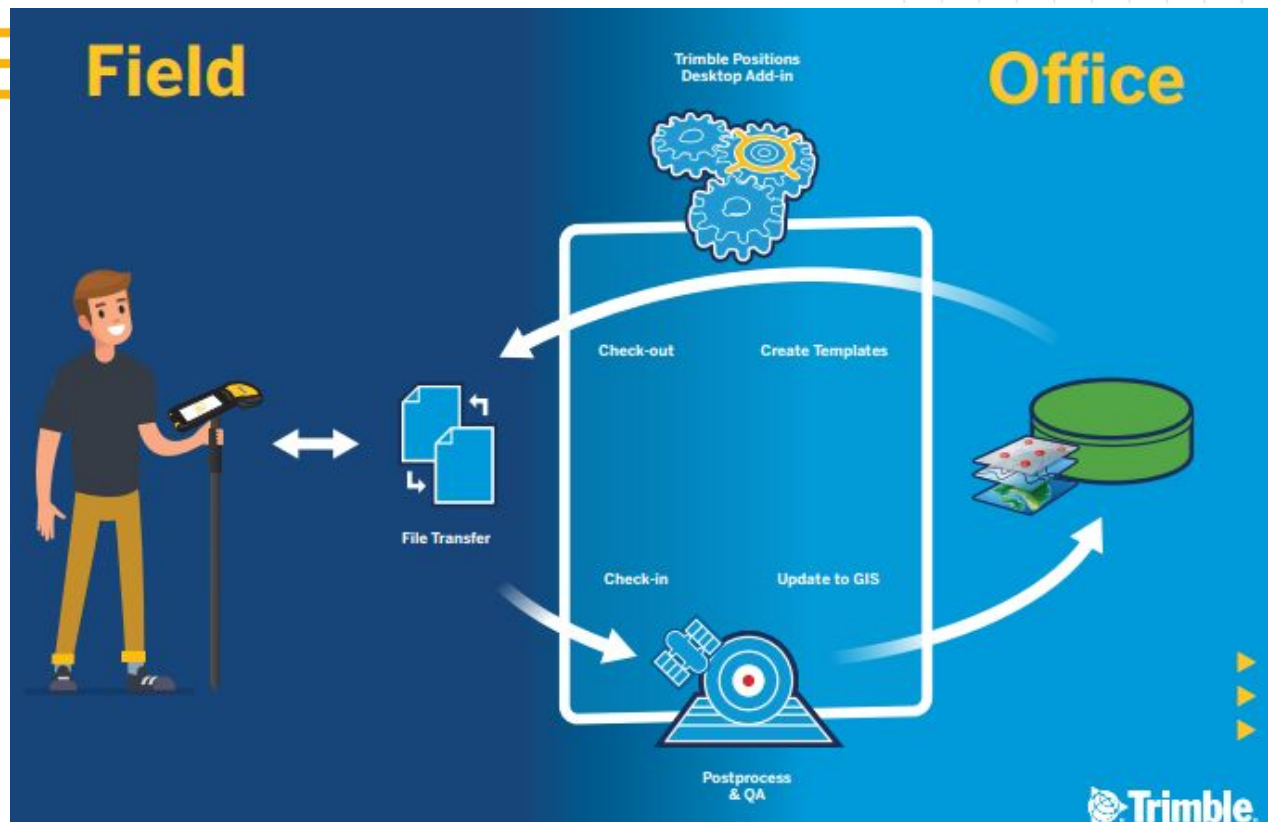
TerraFlex Post-Processing

Trimble® TerraFlex™ software, in conjunction with the Trimble Positions™ Desktop add-in for Esri® ArcGIS® Desktop, will support offline data transfer between the field and office, enabling Esri users to synchronize data directly using on-premise infrastructure.

- Alternative to Trimble cloud services
- Post-processing now available directly inside the Trimble Positions Desktop add-in
- Offline data transfer is ideal for organizations unable to use public cloud platforms
- Allows for data transfer - from office to field & back - using methods such as USB, email, and private data sharing platforms.
- Especially attractive to legacy Trimble TerraSync™ and GPS Pathfinder® Office software customers who prefer the traditional desktop check-out/check-in method & those who need to use post-processing.
- A more modern solution without the need to change your current business practices.

Field

Office



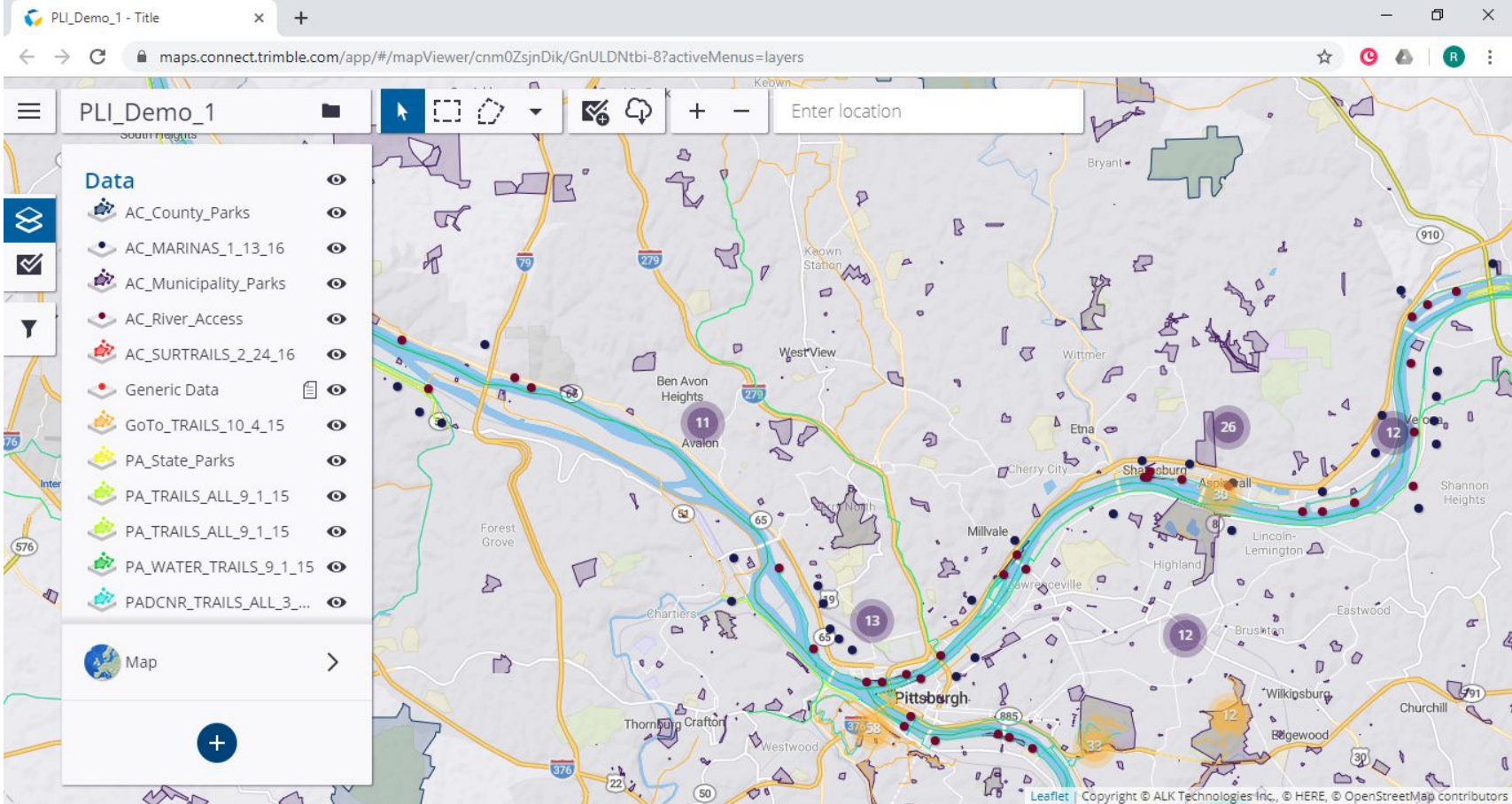
How it works

- TerraFlex mobile app (field) + Trimble Positions Desktop add-in for Esri ArcGIS (office)
- Trimble Positions Desktop add-in creates a TerraFlex project and templates for data collection. Existing features or an empty geodatabase schema are checked out to a field database & transferred to the device
- The field user opens the offline project and carries out data collection. (Data synchronization with the cloud is disabled in TerraFlex while the project is in use.)



Trimble Connect is a cloud platform where you set up, organize and deploy your Trimble TerraFlex™ data collection field projects. Data is automatically synced back from the field to the office where it is quickly and easily viewed, shared and collaborated on with other members of your project organization. With Trimble Connect you can:

- Coordinate, communicate, and collaborate across all stakeholders working on a project, from start to finish
- Group users into Teams to simplify user management
- Easily set up data collection projects and templates and manage who can access the projects
- Upload existing data for update in the field
- View and quality check collected data
- Export to a range of formats for easy viewing and sharing





Resources



- **Catalyst Community** - <https://community.trimble.com/>
- **Geospatial Help Portal** - <https://help.trimblegeospatial.com/portal/>
- **Catalyst Website** - <https://catalyst.trimble.com/>
- **TerraFlex Free Demo** - <https://terraflex.trimble.com/terraflex-get-started.htm>
- **InSphere to Trimble Connect Migration** - <https://community.trimble.com/docs/DOC-33870>
- **Trimble & Esri** - <https://terraflex.trimble.com/terraflex-esri.htm>



Questions?

