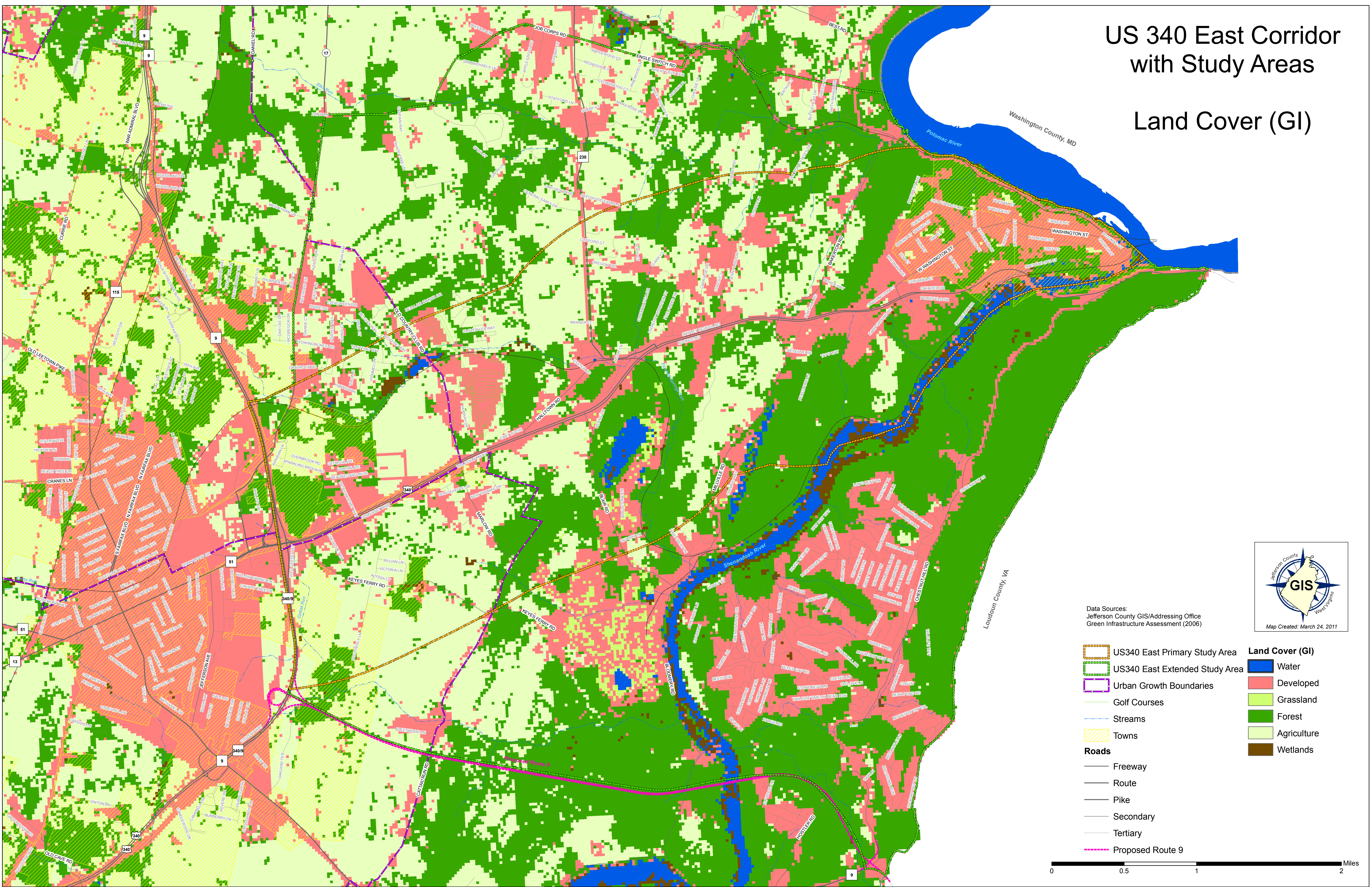
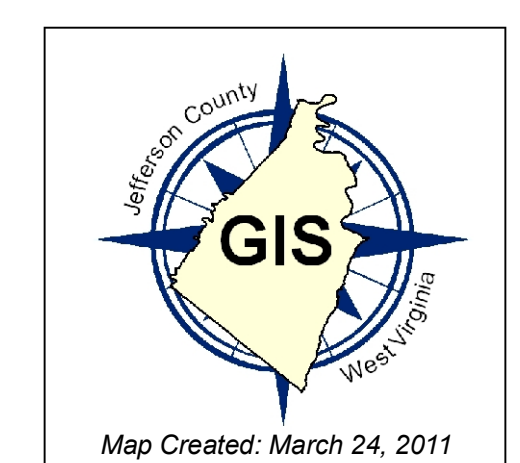


# US 340 East Corridor with Study Areas Land Cover (GI)



Data Sources:  
Jefferson County GIS/Addressing Office  
Green Infrastructure Assessment (2006)



- |                                |                        |
|--------------------------------|------------------------|
| US340 East Primary Study Area  | <b>Land Cover (GI)</b> |
| US340 East Extended Study Area | Water                  |
| Urban Growth Boundaries        | Developed              |
| Golf Courses                   | Grassland              |
| Streams                        | Forest                 |
| Towns                          | Agriculture            |
| <b>Roads</b>                   | Wetlands               |
| Freeway                        |                        |
| Route                          |                        |
| Pike                           |                        |
| Secondary                      |                        |
| Tertiary                       |                        |
| Proposed Route 9               |                        |

