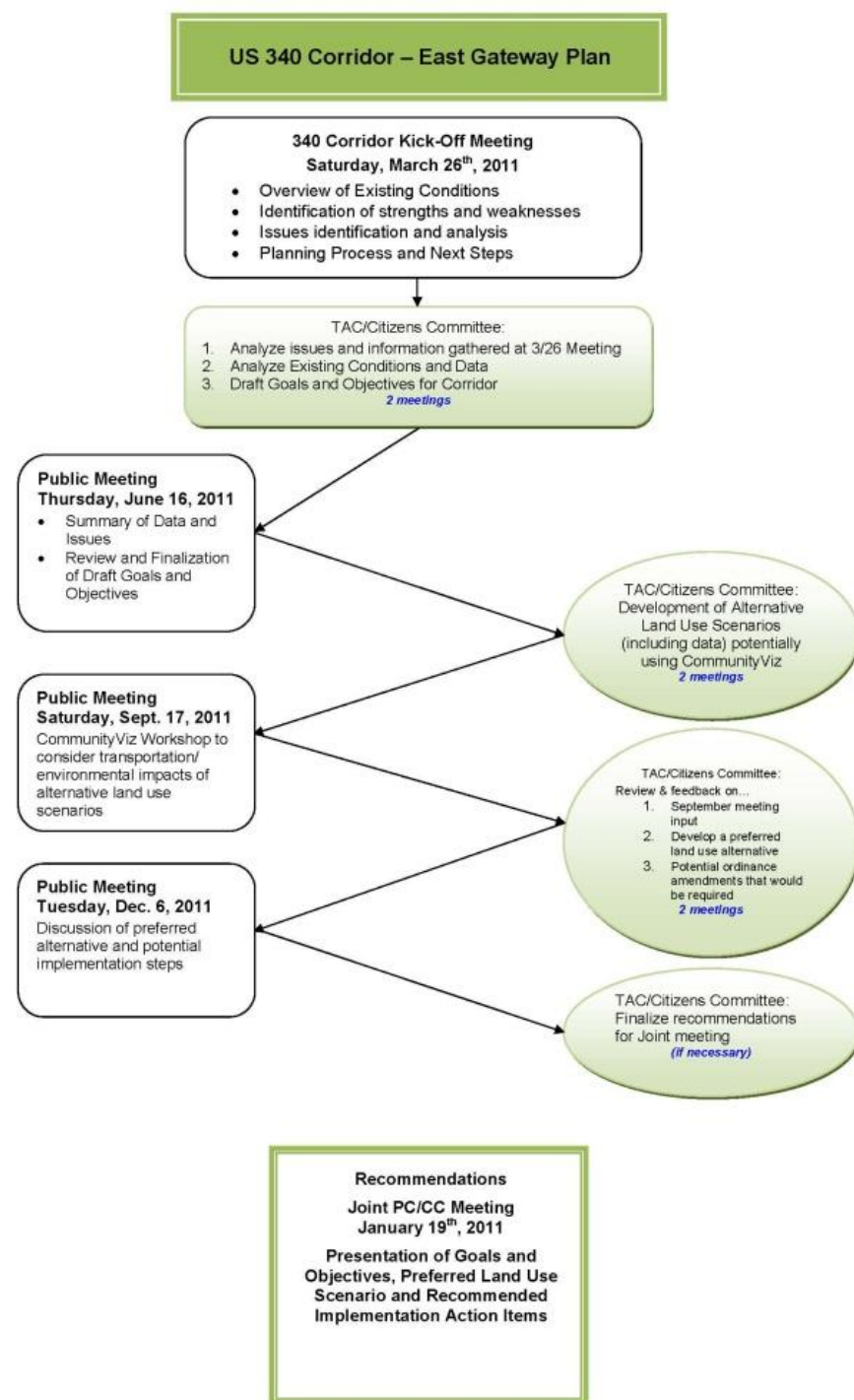


Welcome to the U.S. 340 East Gateway Plan Kick-Off Meeting

March 26, 2011

Overview Of the Planning Process



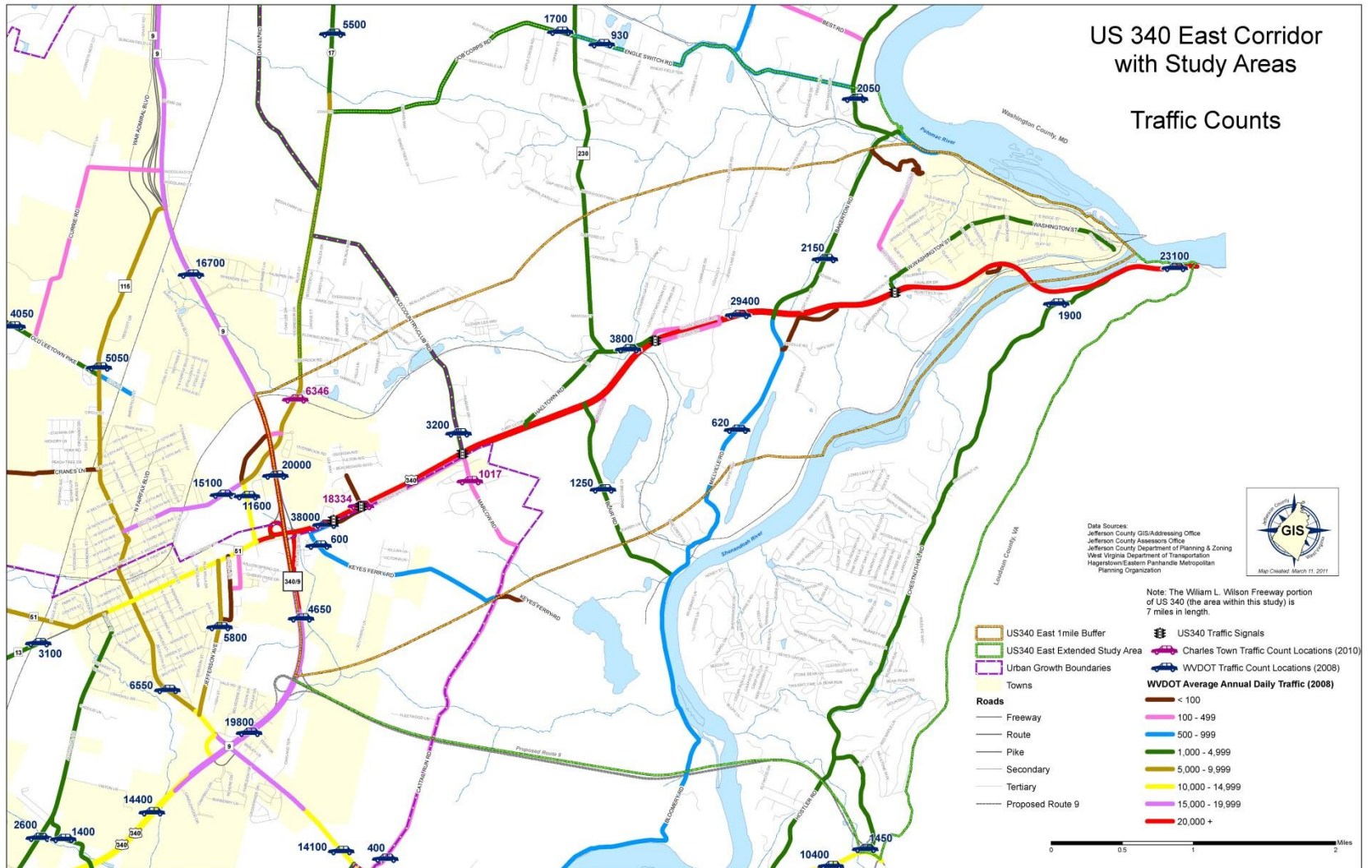
Reading the Maps

- Title
- Legend
- Disclaimer/additional information

Transportation

US 340 East Corridor with Study Areas

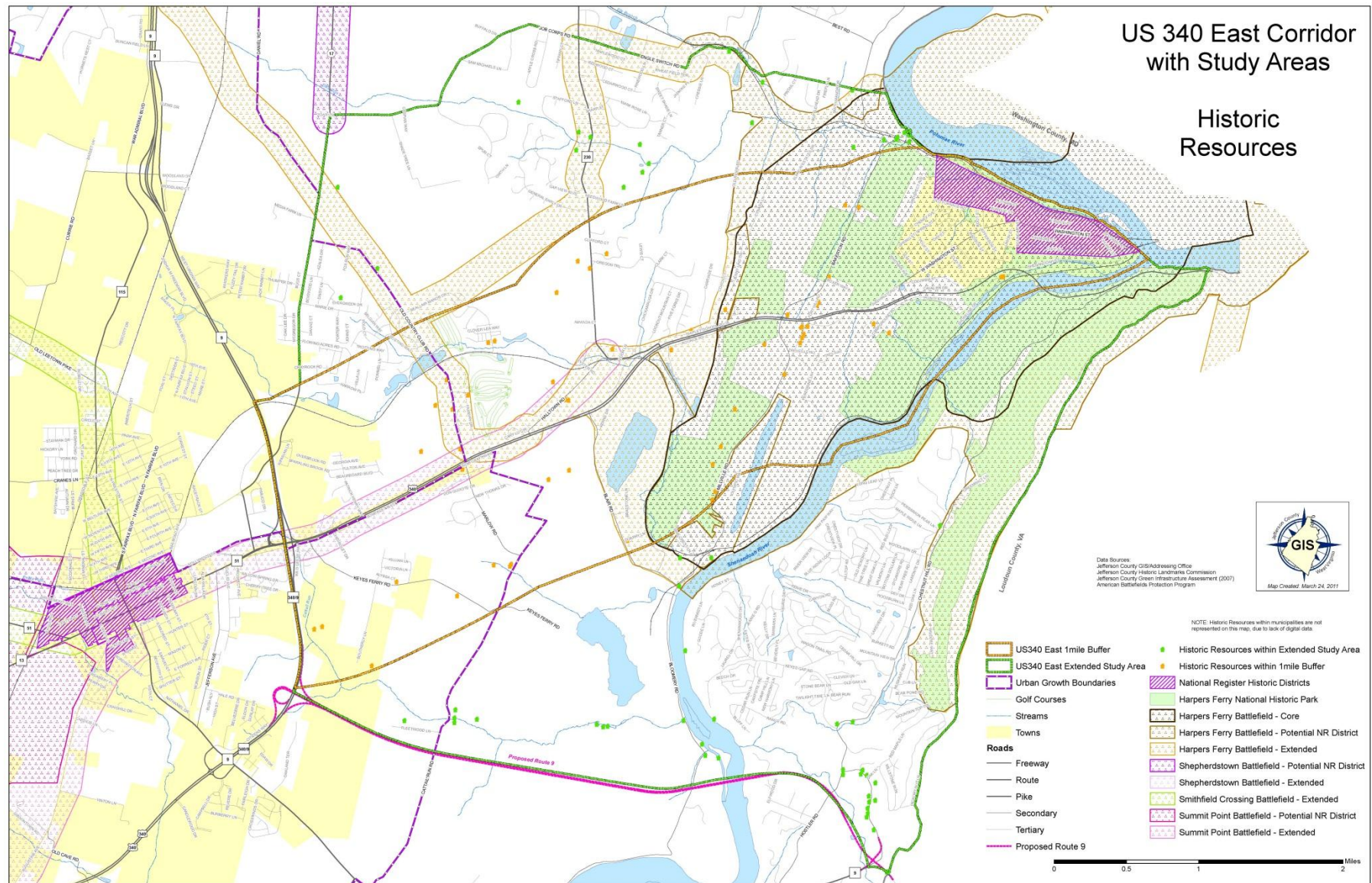
Traffic Counts



Transportation

- Traffic counts
- US 340 Right-of-Way
- Traffic Generators
 - Major Subdivisions
 - Key Employers
 - Tourism/Visitors

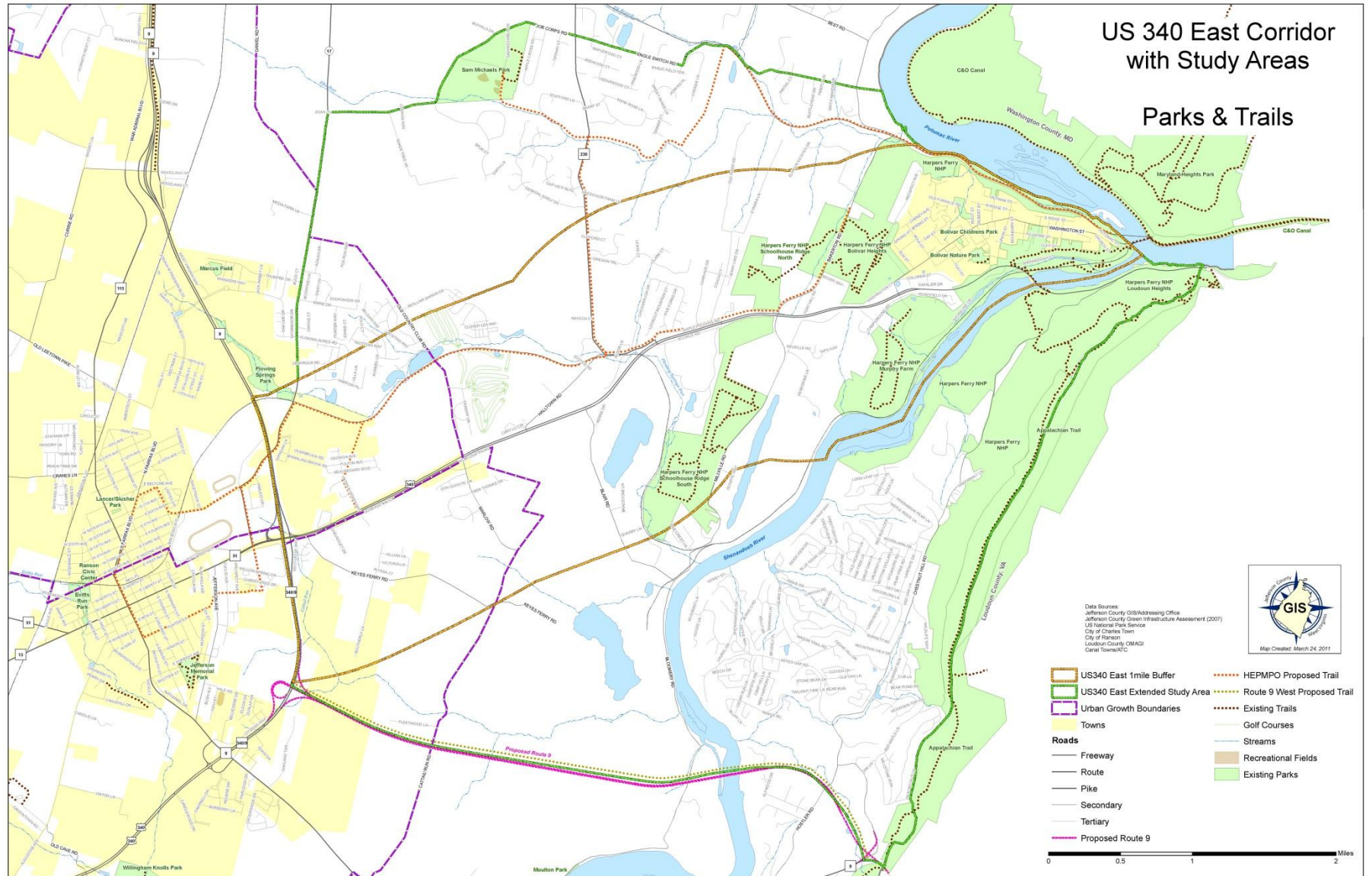
Viewsheds and Historic Resources



Viewsheds and Historic Resources

- Historic Resources
- Viewsheds with
Historic Sites Noted
- 360° Photos from
View Points

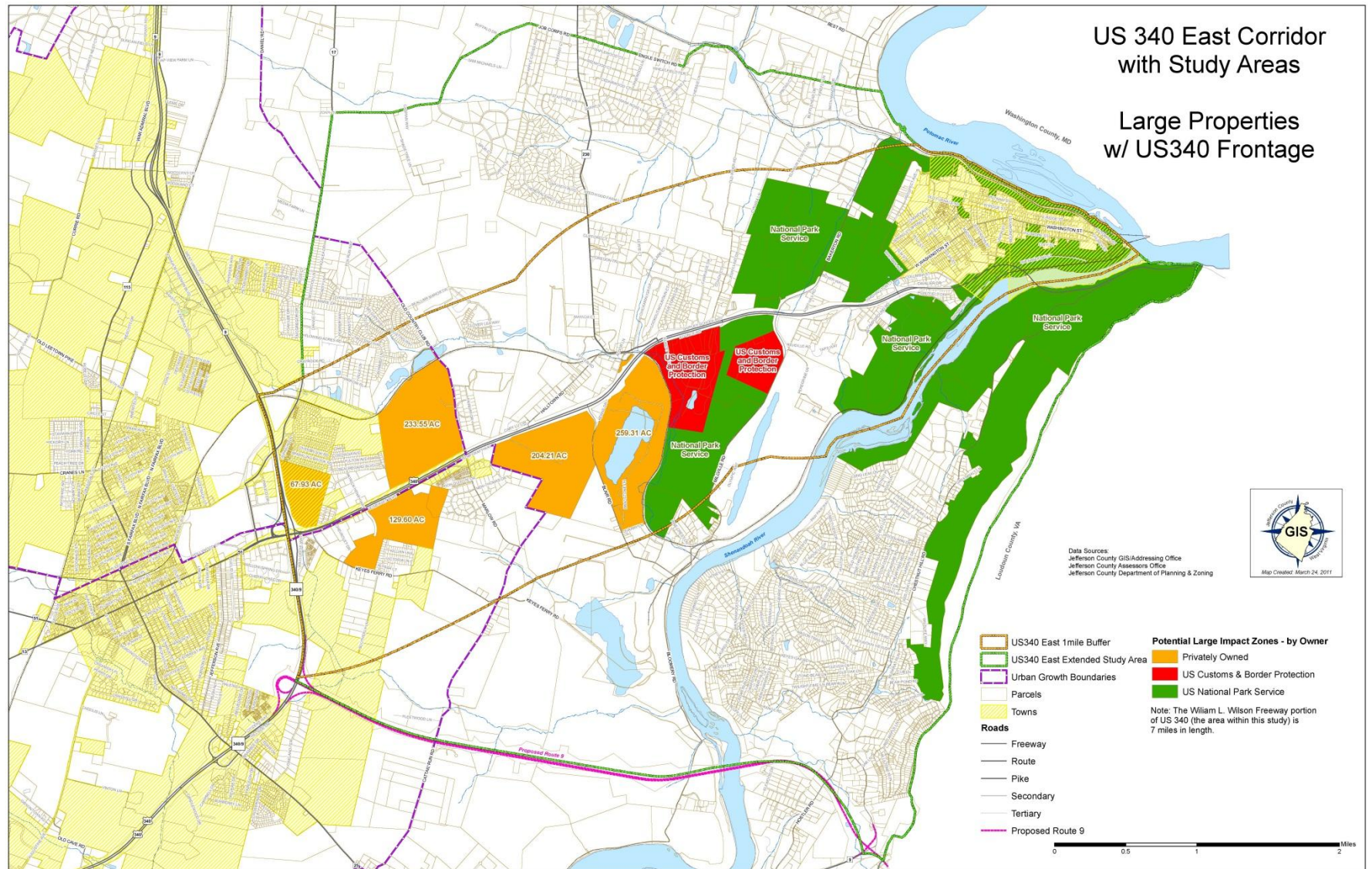
Parks, Trails and Greenways



Parks, Trails & Greenways

- Hydrology/Sinkholes
- Parks & Trails
- Land Cover
 - Univ. Vermont
 - Green Infrastructure

Economic Development



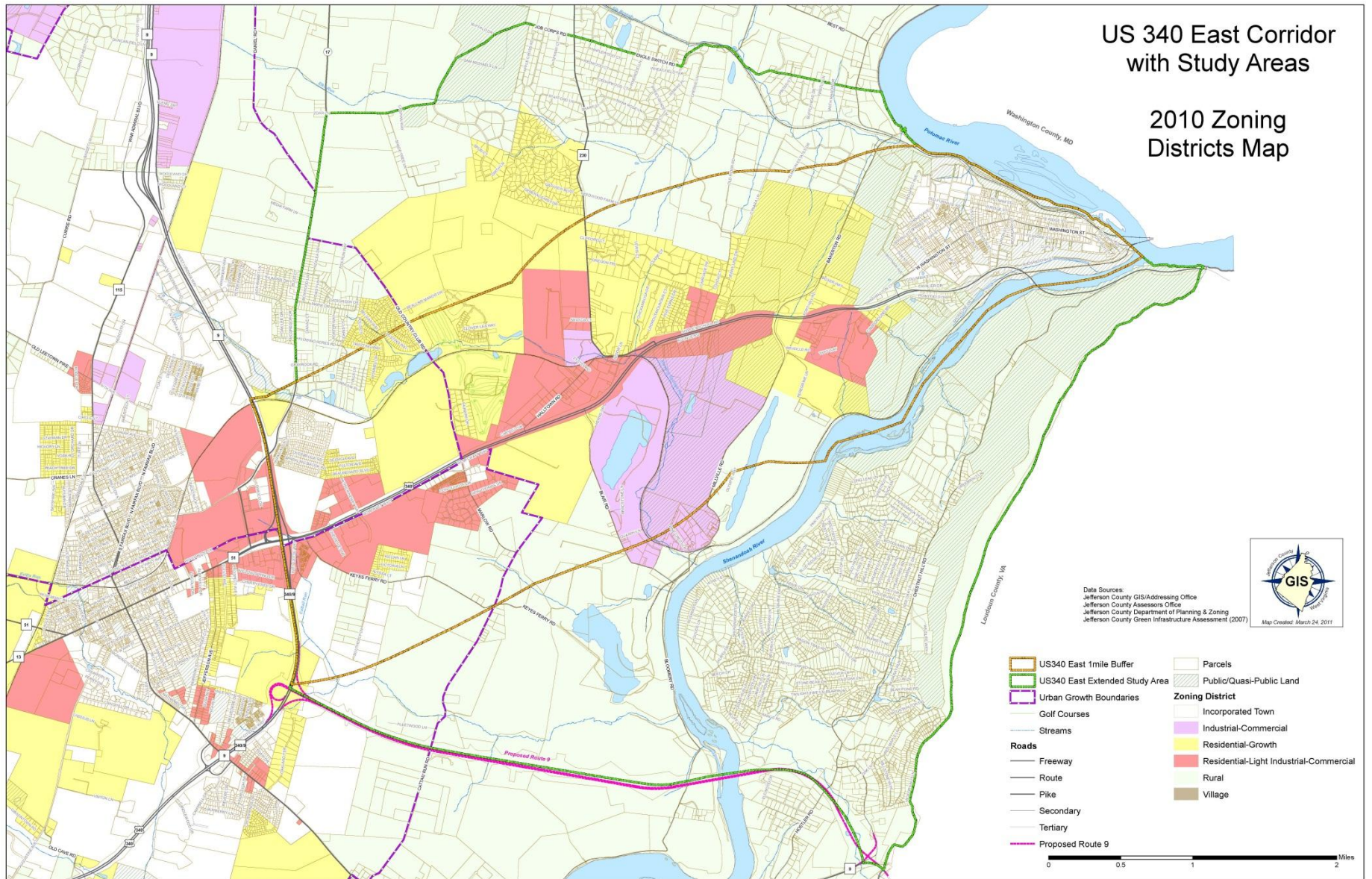
Economic Development

- Key Employers, including Customs & Border Patrol and Harpers Ferry NPS
- Large Properties with US 340 Frontage
- Travel Generated Employment and Spending

Land Use/Planning

US 340 East Corridor
with Study Areas

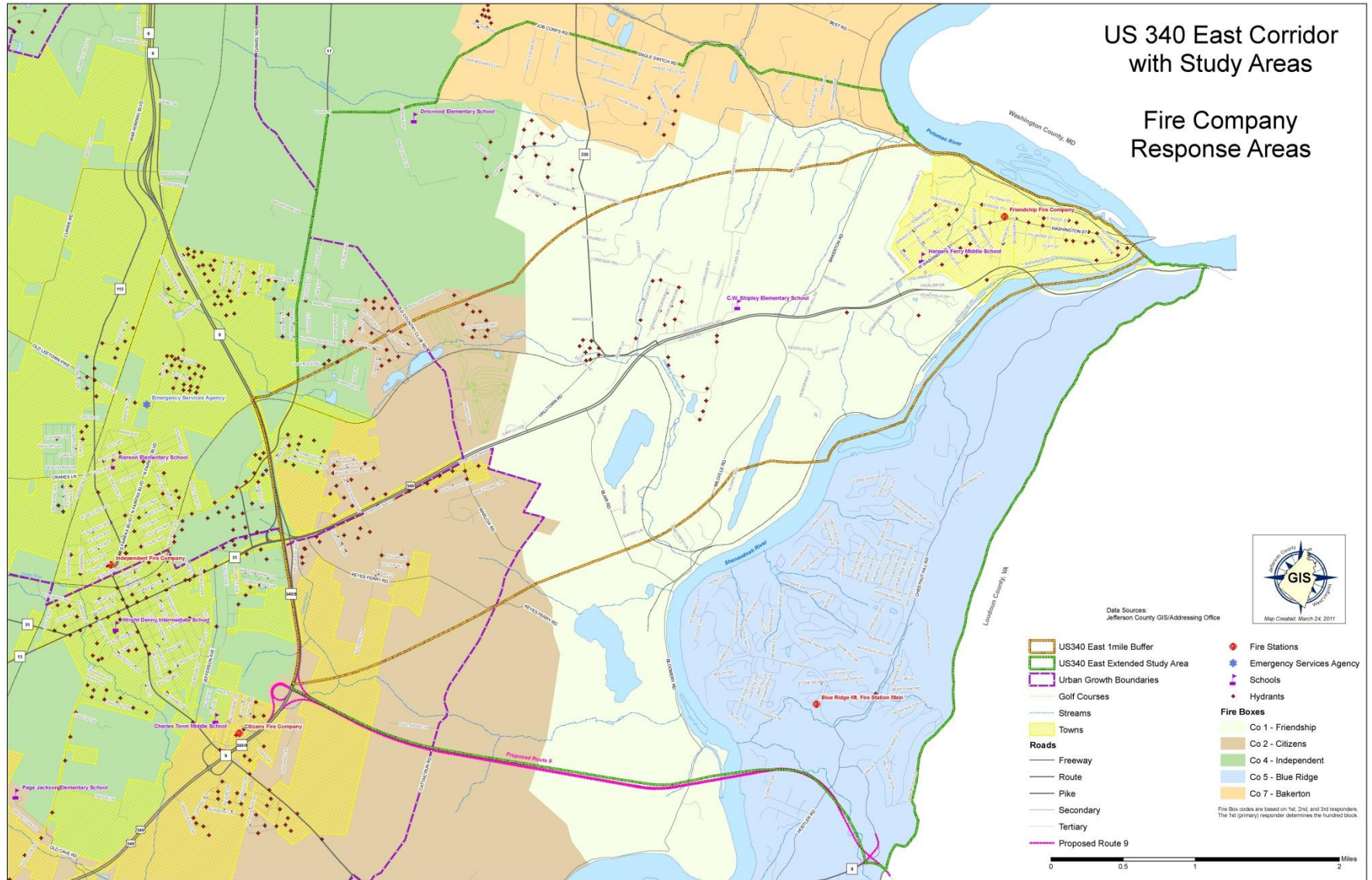
2010 Zoning
Districts Map



Land Use/Planning

- Aerials
- Existing land use
- Zoning
- Topographic
- Major Subdivisions

Community Services



Community Services

- Fire
- EMS
- Water/Sewer
- Schools
- Wireless/Broadband
Facilities

Overview Of the Planning Process

