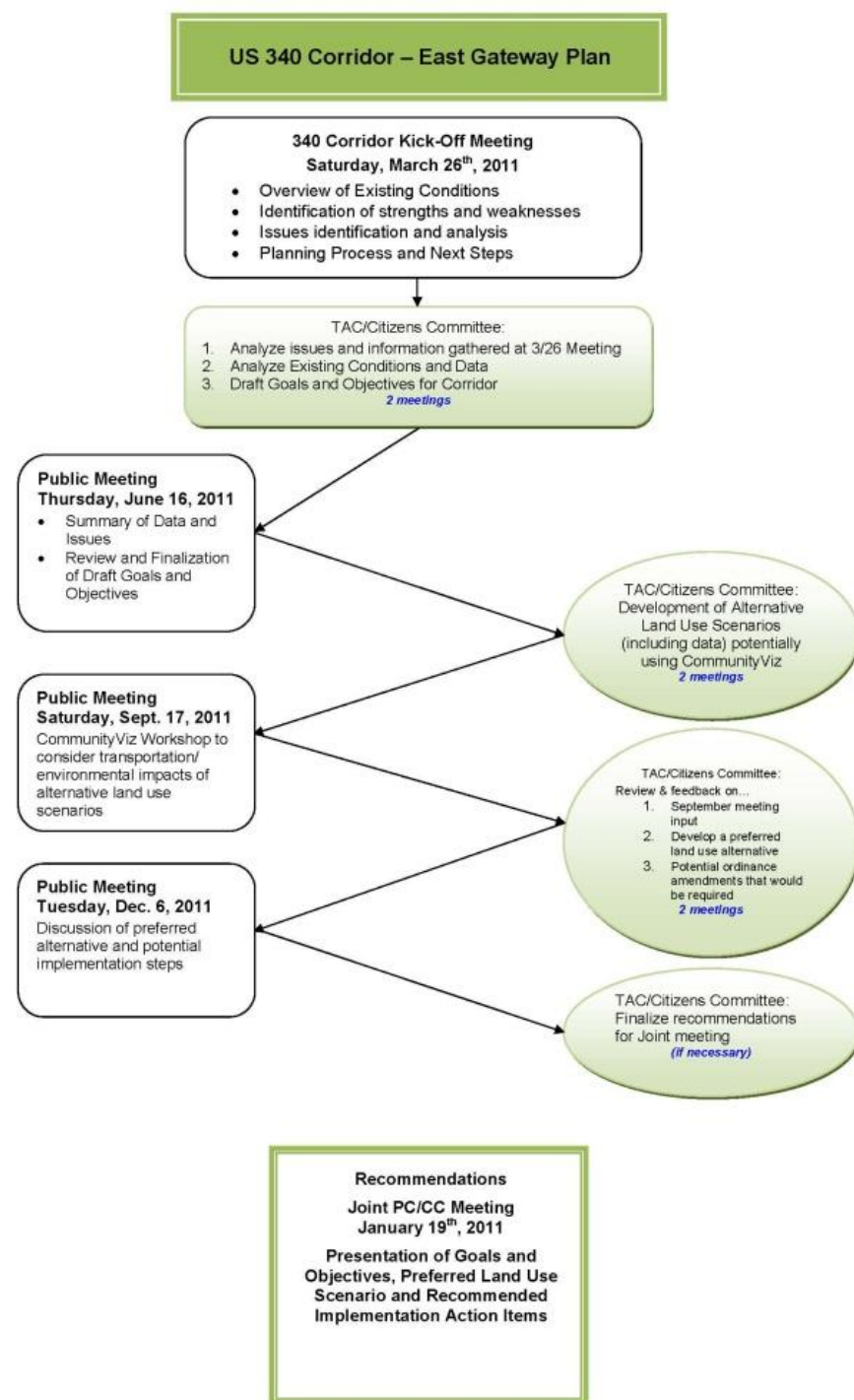


Welcome to the U.S. 340 East Gateway Plan Public Meeting

June 16, 2011

Overview Of the Planning Process



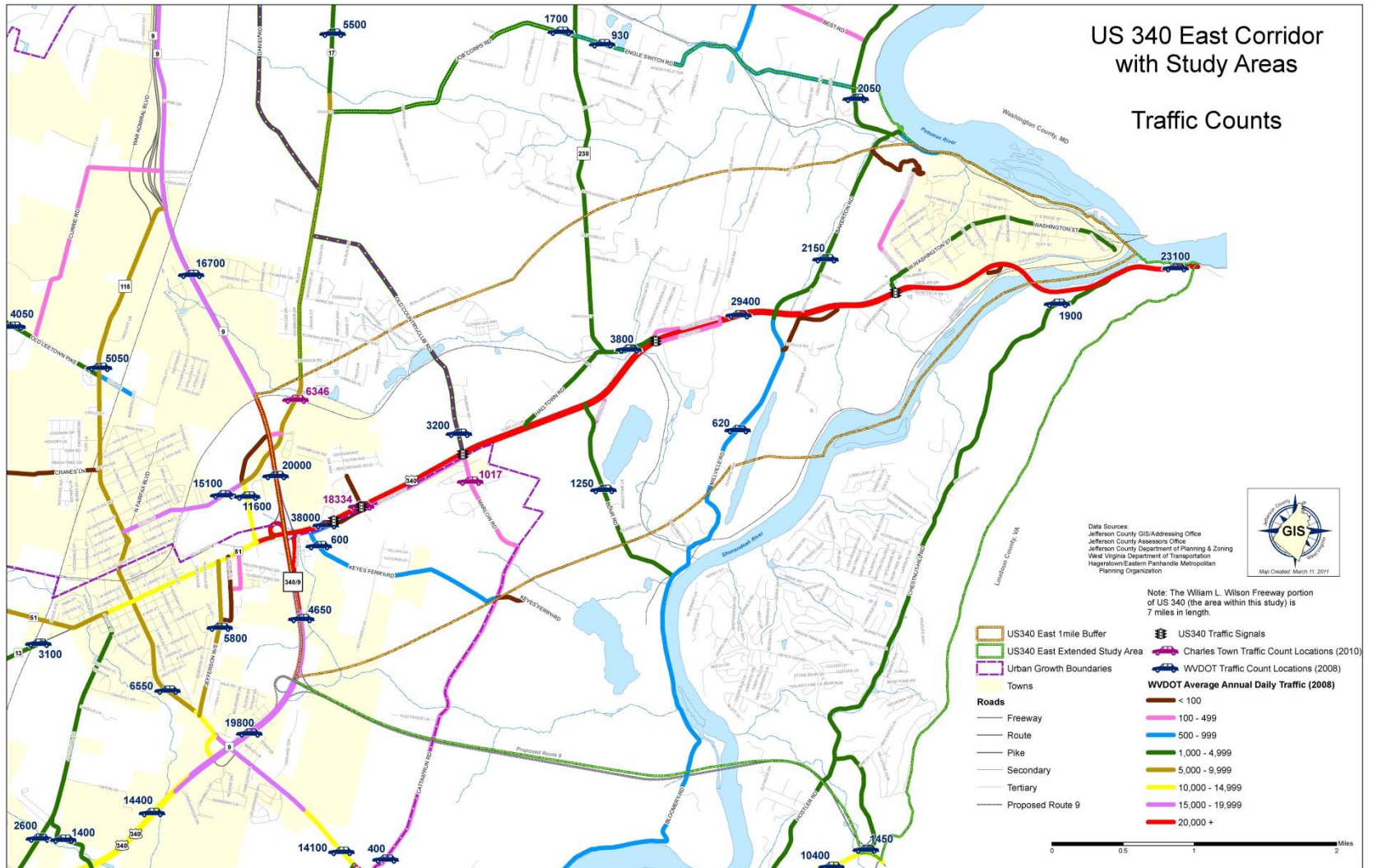
Common Themes from March 26th meeting

1. Transportation
2. Parks, Trails and Greenways
3. Community Services
4. Economic Opportunities
5. Historic Resources
6. Land Use Planning

Transportation

US 340 East Corridor with Study Areas

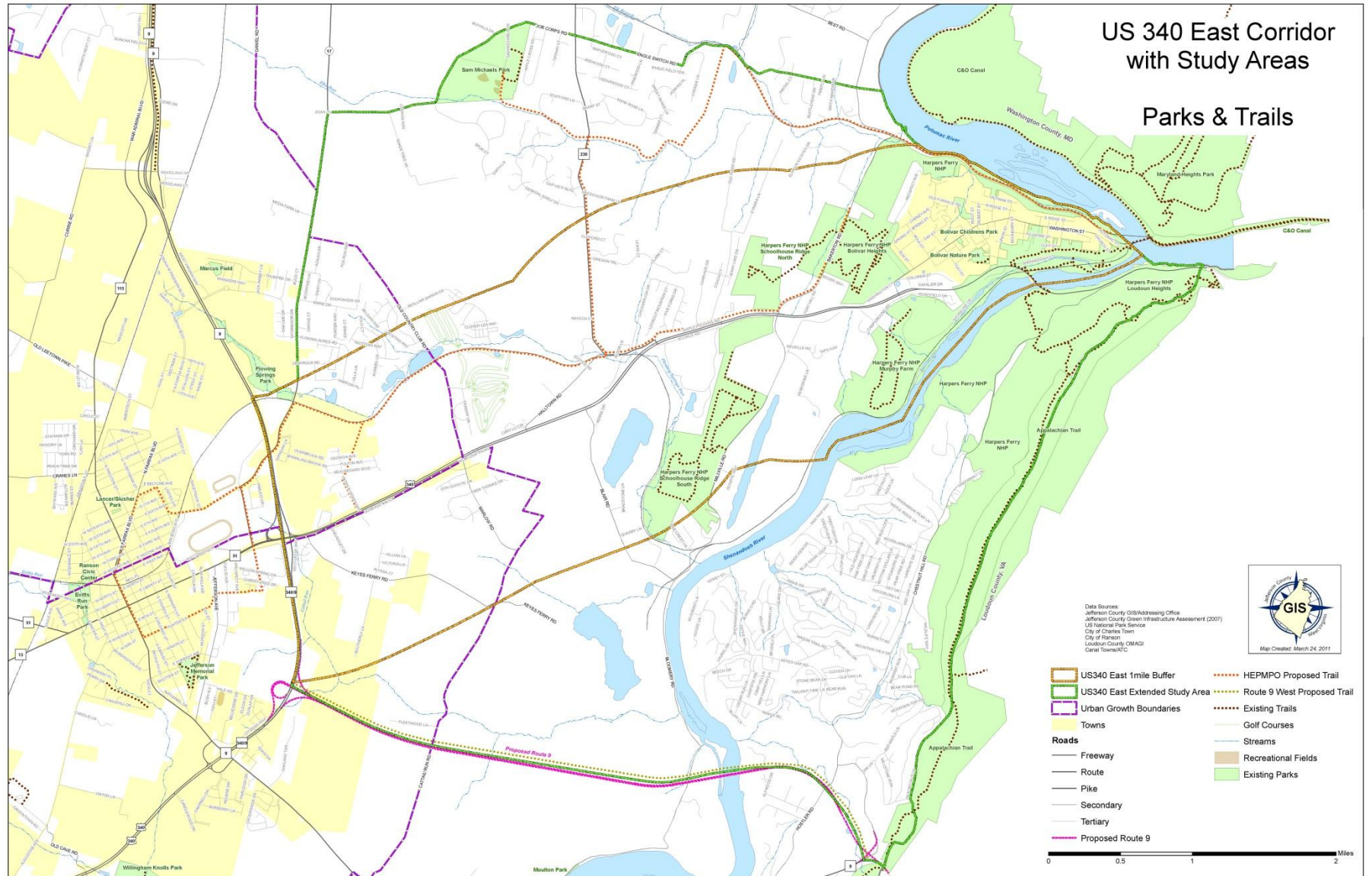
Traffic Counts



Transportation

- Promote Traffic Safety
- Improve Traffic Flow
- Promote Transportation Alternatives
- Improve Mobility for Pedestrians, Hikers, and Bicyclists
- Truck Traffic Compatibility
- Additional Transportation Comments

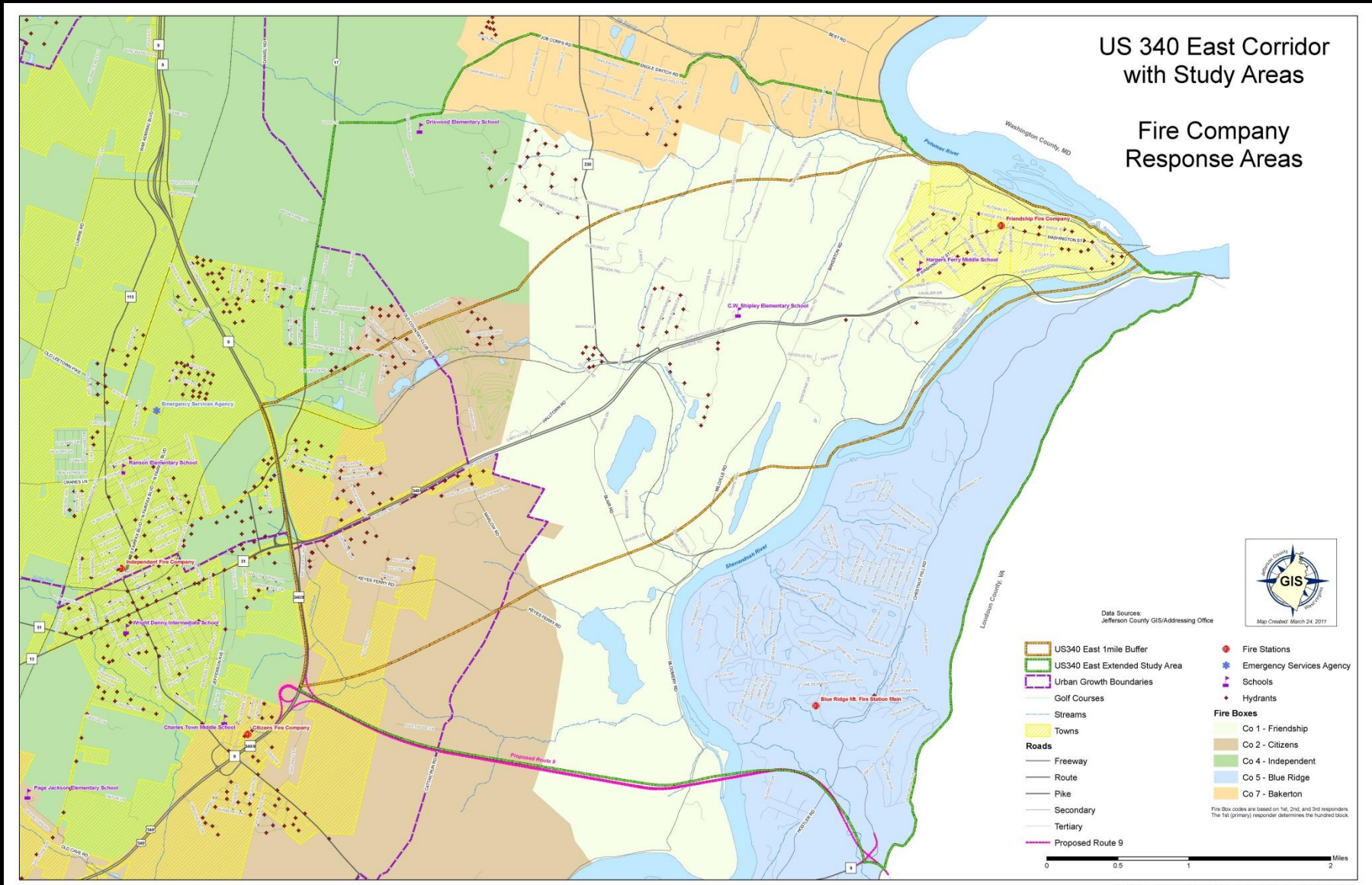
Parks, Trails and Greenways



Parks, Trails and Greenways

- Improve Existing Trail Network
- Beautify the US 340 East Corridor
- Develop Additional Parks and Enhance Existing Parks
- Improve Signage and Mapping

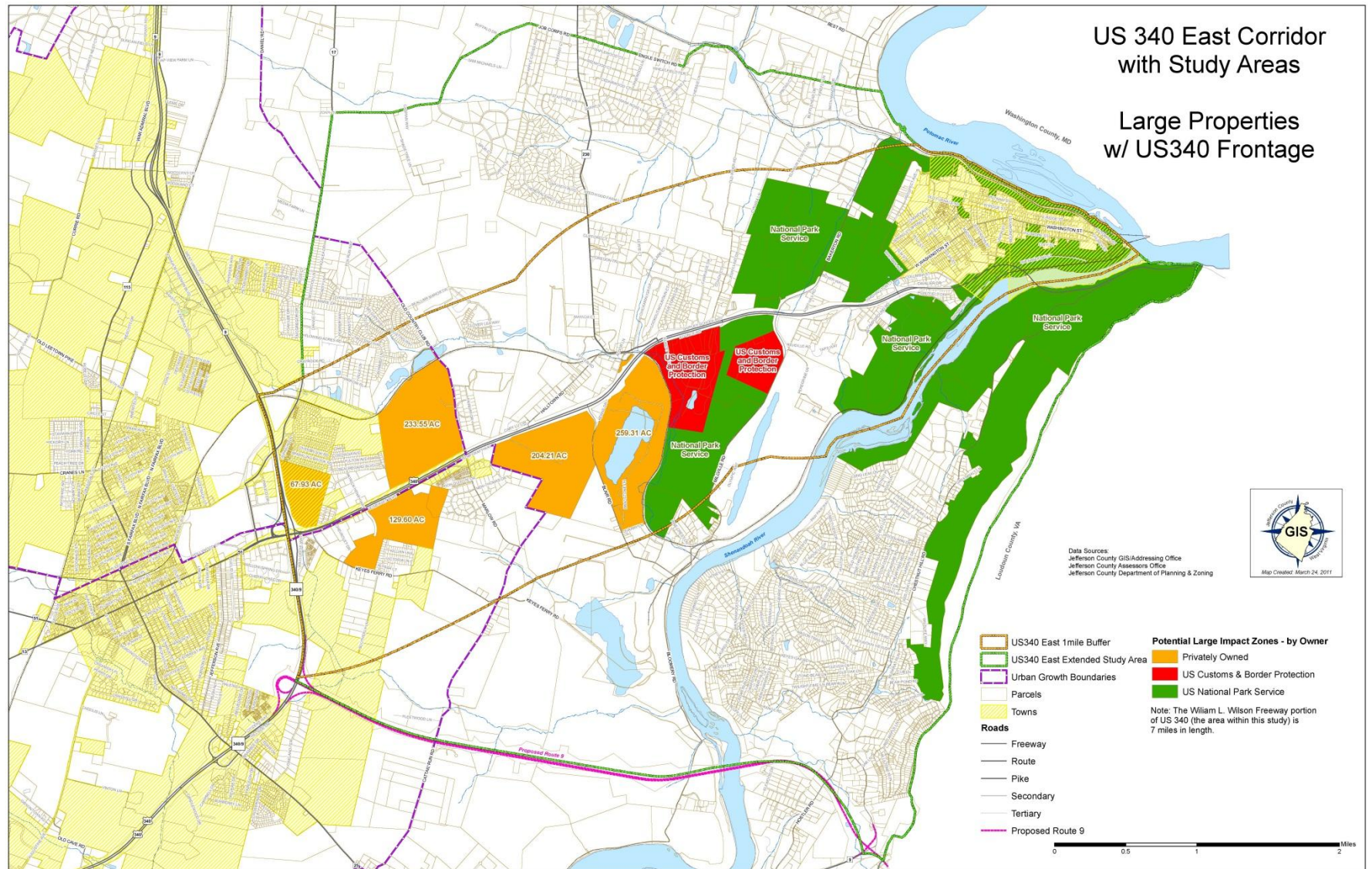
Community Services



Community Services

- Improve Wireless Service in the 340 Corridor
- Enhance Area Schools and Libraries
- Emergency Services
- Water / Sewer Service
- Health Services

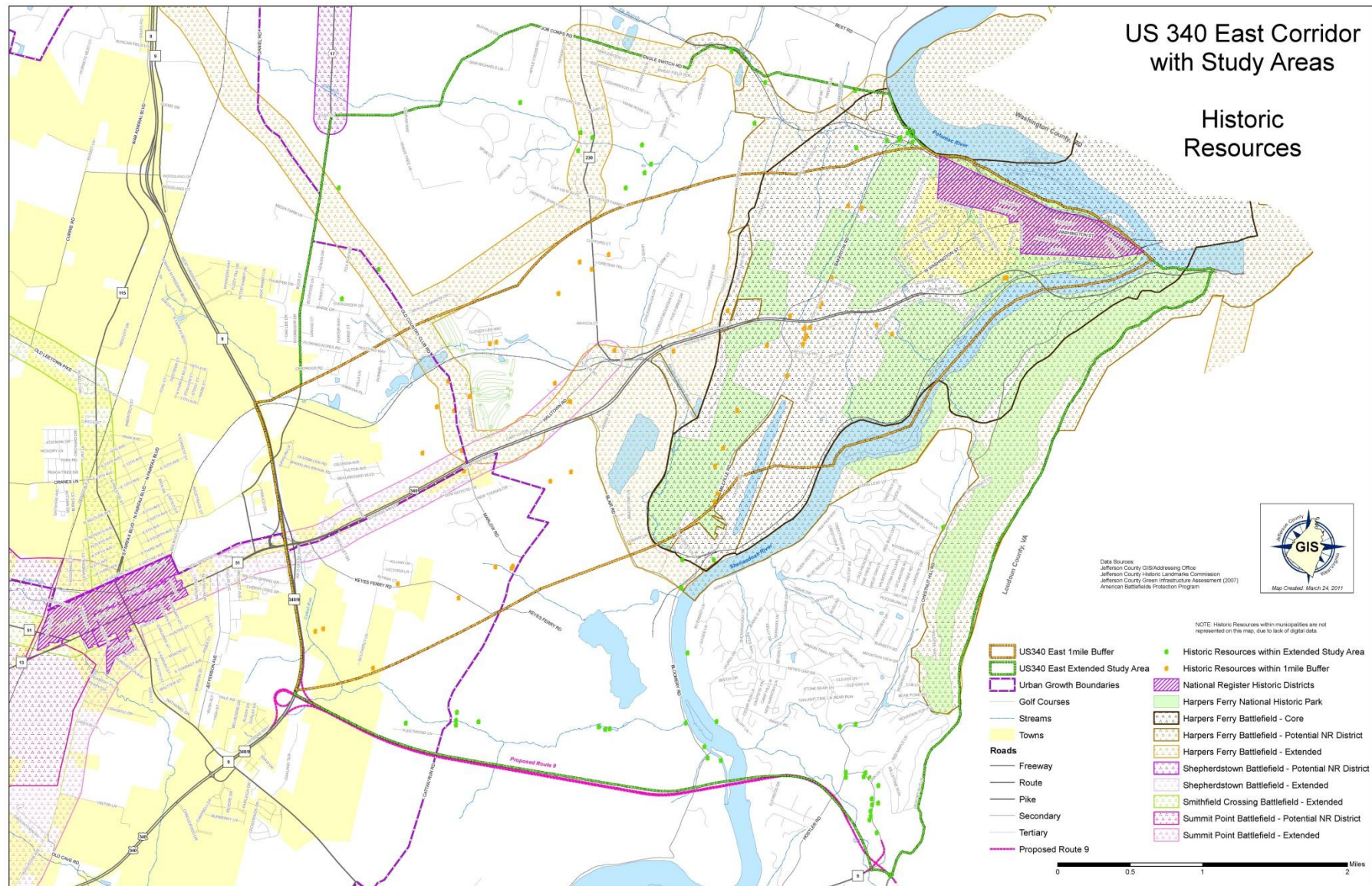
Economic Development



Economic Opportunities

- Promote Economic Development along the US 340 Corridor
- Promote Business Development and Retention

Historic Resources



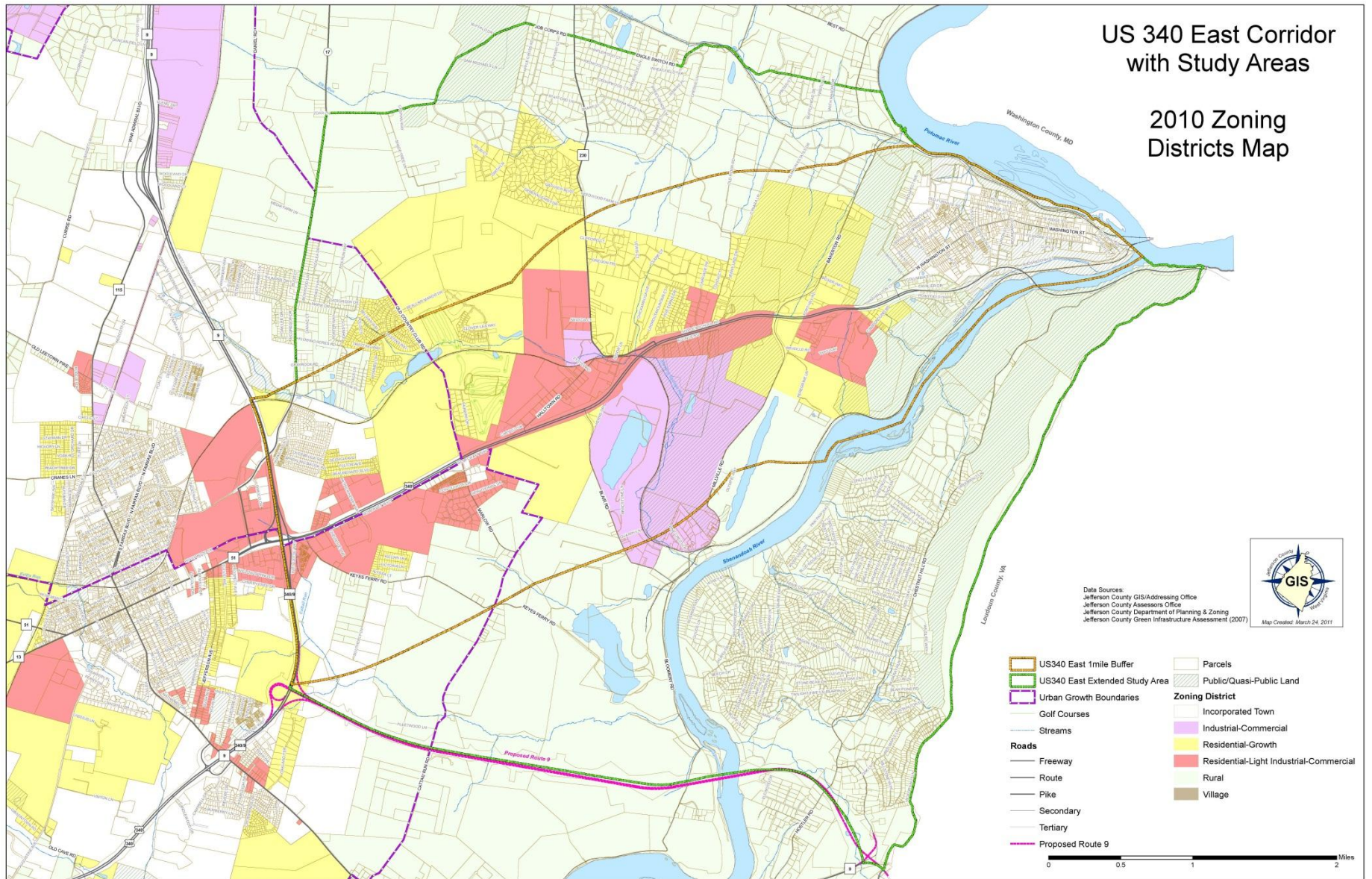
Historic Resources

- Protect Historic Structures/Resources
- Enhance Cultural/Heritage Activities
- Protect the Rural and Historic Viewshed / Landscape
- Create Gateway/Entrance
- Improve Planning Coordination with Other Agencies

Land Use Planning

US 340 East Corridor
with Study Areas

2010 Zoning
Districts Map



Land Use Planning

- Preservation
- Allow New, Compatible Development
- Minimize Development in Key Areas
- Enhance Planning Efforts

Overview Of the Planning Process

