

Jefferson County Parks & Recreation

Activity Guide

Summer 2017



A perfect place to grow...



www.jcprc.org

Neither the Jefferson County Board of Education nor any of its agents or employees sponsor or endorse this material or publication. The views expressed may or may not reflect those of the county or school administration and are neither approved nor disapproved by them.



\$200 Tuition Voucher



JEFFERSON ACADEMY

ACCREDITED, INDEPENDENT PRIVATE SCHOOL • 2½ YEAR OLD THRU 8TH GRADE*

Nature Based and Leadership Focused Curriculum

- AVERAGE CLASS SIZE: 12 STUDENTS
- COMMITMENT TO INDIVIDUAL ATTENTION
- SERENE 30 ACRE LEARNING ENVIRONMENT
- FOREIGN LANGUAGE FOR ALL AGES
- BEFORE AND AFTER CARE AVAILABLE
- MULTIPLE CHILD DISCOUNTS AND INCENTIVES
- FLEXIBLE PAYMENT PLANS
- REGULAR TUITION \$5,950
- **TUITION AFTER \$200 DISCOUNT: \$5,750**
- MONTHLY PAYMENTS \$479.16 WILL BE PRORATED
- DAILY RATE – \$35 (PRESCHOOL)

A Private School Education for less than the cost of day care!



JEFFERSON ACADEMY
Enriching Young Minds

CALL TO SCHEDULE A PERSONAL TOUR TO SEE WHAT
JEFFERSON ACADEMY CAN OFFER YOU AND YOUR FAMILY:

449 ROSE HILL DRIVE • KEARNEYSVILLE, WV 25430
304-725-1438

WE OFFER COMPUTER CLASSES, CLASSIC LITERATURE COURSES,
YOGA, ART, MUSIC, DRAMA, AND VARIOUS OTHER ELECTIVES.

ADDITIONAL DISCOUNTS MAY APPLY.

www.thejeffersonacademy.com

Jefferson County Parks and Recreation nor any of its employees sponsor or endorse the information presented on this ad or any ad presented in this publication.

Jefferson County Parks & Recreation ~ 2 ~ Register for classes at: www.jcprc.org

Welcome!



What can I do at Parks & Rec?

1-3 years old

Dance Lessons	Family Special Events
Gymnastics	Fishing Derby
Martial Arts	Toddler Learning Time
Pony School	

3-6 years old

Dance Lessons	Little All Stars
Gymnastics	Nature Trail Explorers (5-10)
Martial Arts	Youth Tennis (5-8)
Family Special Events	Themed Preschool Camps (3-8)
Pony School	Baseball Camp (5-16)
Play & Learn Preschool	Amazing Athletes Camp (4-6)
Animal Adventures (5-12)	All Sports Kinder Camp (3-5)
Bird or Snake Adventures (5-12)	Flag Football Camp (5-9)
Learn To Ride (4-10)	Fishing Derby (2-17)
Soccer Skills (5-7)	Swim Lessons (3+)
Sports Express Camp (5-12)	

6-12 years old

Dance Classes & Camps	British Soccer Camp (7-12)
Gymnastics Classes & Camp	Flag Football Camp (5-9)
Martial Arts Classes & Camp	SNAG Golf (8-13)
Survivor Camp (8-12)	Girls' Volleyball League (8-13)
Outdoor Adventure Camp (9-14)	Art Camps (6-14)
Nature & Ecology Camps (4-10)	Animal Camps (8-12)
Swim Lessons (3 and up)	Junior Police (10-15)
Archery Classes & Camps (6 & up)	Quidditch Camp (7-12)
Sports Express Camp (6-13)	Field Trip Camp (8-15)
Slam'n Jam'n Basketball (6-17)	LEGO Camps (8-12)
Middle School XC Camp (11-14)	Annual Fishing Derby (2-17)
Basketball Camps (9-18)	

Teens & Adults

Dance Classes & Camps (7-16)	Field Trip Camp (8-15)
Gymnastics Classes & Camp (6-16)	Annual Fishing Derby (2-17)
Martial Arts Classes	Bus Trips (18+)
Outdoor Adventure Camp (9-14)	Teen & Adult Fitness (18+)
Archery Classes	Crochet & Knitting (14+)
Sports Express Camp (6-13)	Couch to 5K (12+)
Slam'n Jam'n Basketball (6-17)	Boot Camp (18+)
Middle School XC Camp (11-14)	Art Classes & Camps (9-14)
Basketball Camps (9-18)	En Plein Painting (18+)
SNAG Golf (8-13)	Environmental Training (18+)
Girls' Volleyball League (8-13)	Men's Softball League (18+)
Art Camps (6-14)	Summer Basketball League (15-18)
Junior Police (10-15)	

Table of Contents

Summer Day Camp	Pages 4
Outdoor Adventure & Ecology	Page 5
Martial Arts	Page 6
Dance	Pages 7
Gymnastics	Page 8
Aquatics	Pages 9
Sports	Pages 10-12
Leagues	Page 13
Art.....	Pages 14-15
Special Interests	Pages 16-17
Kids Events	Page 17
Bus Trips	18-19
Teen & Adult.....	Pages 20-22
Movie in the Park	Page 23
Day Camps for Little Ones	Page 24
Fall Preschool Preview.....	Page 25
Thank You!	Page 26-27
Fireworks.....	Page 27
Park Information	Page 28
Park Map.....	Page 29
Park & Program Policies	Page 30
Enrollment Form	Page 31

Our Staff

Jennifer Myers	Director
David Kling.....	Assistant Director
Tim Lykins.....	Park Manager
Brenda Whittington	Financial Coordinator
Becki Zaglifa	Public Relations
Terri Burhans	Community Development
Joyce Moler.....	Office Assistant
Mary Reck.....	Office Assistant
Nicole Cooper	Office Assistant



Jefferson County Parks and Recreation

SUMMER DAY CAMP

Ages 5-14

Sam Michael's Park
Wright Denny Intermediate
Shepherdstown Elementary
Blue Ridge Primary

Sam Michael's Park Program #4231

7:30am-5:30pm Mon-Fri
1 field trip each week!
Water Day Friday w/Water Slide
\$129.00/week

Week 1 - June 12-16

Movie Week

Field Trip - Regal Cinemas, Martinsburg

Week 2 - June 19-23

Treasure Week

Field Trip - Winchester Discovery Museum

Week 3 - June 26-30

Around the World in 5 Days

Field Trip - Jay Dee's

Week 4 - July 10-14

Crazy Mix-up Week

Field Trip - Greenbrier State Park

Week 5 - July 17-21

Animal Week

Field Trip - Winchester Discovery Museum

Week 6 - July 24-28

Olympics

(All camps participate in field day.
Field Trip - Regal Cinemas, Martinsburg

Week 7 - July 31- August 4 Build-It

Field Trip - Frederick Keys Game

Week 8 - August 7-11

Beach Week

Field Trip - Greenbrier State Park

Shepherdstown Elementary Program #4240

8:00am-4:00pm Mon-Fri
Swimming at Lambert Park
pool once each week
\$99.00/week

Week 1 - June 12-16

Beach Week

Week 2 - June 19-23

Out of this World!

Week 3 - June 26-30

Movie Week

Week 4 - July 10-14

Treasure Week

Week 5 - July 17-21

Around the World in 5 Days

Week 6 - July 24-28

Olympics

(All camps participate in field day.
Kids will ride a bus to Sam Michael's Park)

Week 7 - July 31- August 4

Crazy Mix-up Week

Wright Denny Intermediate Program #4223

8:00am-4:00pm Mon-Fri
Swimming at Jefferson Memorial
Park pool twice each week
\$99.00/week

Week 1 - June 12-16

Build-it!

Week 2 - June 19-23

Animals Week

Week 3 - June 26-30

Beach Week

Week 4 - July 10-14

Out of this World!

Week 5 - July 17-21

Movie Week

Week 6 - July 24-28

Olympics

(All camps participate in field day.
Kids will ride a bus to Sam Michael's Park)

Week 7 - July 31- August 4

Treasure Week

Blue Ridge Primary Program #4248

8:00am-4:00pm Mon-Fri
\$85.00/week

Week 1 - June 12-16

Crazy Mix-up Week

Week 2 - June 19-23

Around the World in 5 Days

Week 3 - June 26-30

Build-it!

Week 4 - July 10-14

Animals Week

Week 5 - July 17-21

Beach Week

Week 6 - July 24-28

Olympics

(All camps participate in field day.
Kids will ride a bus to Sam Michael's Park)

Week 7 - July 31- August 4

Out of this World!

Movie week: Activities, crafts and games based on a different movie each day (Harry Potter, Finding Dory, Secret Lives of Pets, Trolls and Sing)

Beach week: Water games, beach towel games, beach ball games, beach crafts

Olympics: Sports activities with an Olympics field day at Sam Michael's Park with all of the day camps participating.

Crazy Mix-up: Crazy hair day, wear pajamas day, mismatched clothes day, blindfolded mazes, parachute, combo games: hockey-soccer, basketball-kickball

Build-it!: Make catapults, bridges, castles, home depot kits, recycle crafts

Treasure Week: Create and follow treasure maps, hot/cold game, egg hunt, scavenger hunts, etc.

Out of this World!: All things solar system: sun catchers, moon rocks, paper plate flying saucers, moon sand, etc.

Animals Week: Activities, games and crafts with animals in mind

Around the World in 5: Play games that kids play from different countries, crafts from different countries

Registration: *Due to state law regulations we are required to limit the number of days a child is allowed to attend summer day camps, or any camp lasting more than 6 hrs. Children may only attend these camps for a maximum of 6 weeks (30 days) during the summer (consecutive or nonconsecutive). Full payment is due at time of registration. Parent must complete a 'camp registration' form as well as a 'health form' for each child they are registering.

Camp Enrollment Minimums: In order to maintain low costs for our camps despite an increase in costs and wages, we will be maintaining a minimum participant number in each camp. Camps/classes will be canceled if minimum numbers are not reached.

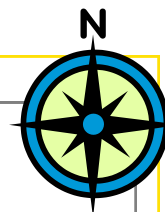
Lunch: Campers will need to bring their own lunch and beverage to camp every day. Refrigeration is not available. Small coolers or ice packs are recommended.

Dress: Children are encouraged to dress comfortably in shorts and t-shirt/camp shirt. Closed toe shoes are highly recommended. Camp T-shirts are required to be worn on field trips days.

Personal Belongings: Clearly mark all personal belongings (sunscreen, towels, lunches, backpacks, etc.) with the camper's first and last name. Please do not send valuables along with your child, including video games and Nintendo DS's. JCPRC is not responsible for lost or stolen items.

First Day Newsletter: On the first day of each camp session, your child will receive a newsletter containing specific information regarding daily activities for that week of camp. Please refer to the newsletter before coming to camp each day.

Outdoor Adventure Camps



Survivor Camp

Learn about surviving in the great outdoors while having plenty of hands-on fun! We may learn how to build shelters, safely build fires, use a compass, go on a scavenger hunt, and play some games that will help you improve your survival know how. **Camp runs Monday through Thursday. Monday, Tuesday, Wednesday camp drop off is at 9:00 am. Pick up is at 4pm on Monday and Tuesday. On Wednesday, you are invited to camp out under the stars at Sam Michael's Park. We will provide dinner Wednesday and breakfast the next morning. Pick-up on Thursday will be at 11:00 a.m.** Please send a packed lunch, water, and snack with your child each day. Sunscreen and bug spray is a plus. Campers will meet at the JCCC for drop off and pick up each day in the lobby area.

8-12 yrs / 1 week / \$157	Sam Michael's Park	Instructor Jeff Fiolek
Program #4370	Mon-Thur, 7/24-7/27	See times in description
Program #4371	Mon-Thur, 8/7-8/10	See times in description

Outdoor Adventure Camps

Outdoor adventure camp offers unforgettable outdoor experiences for adventure seeking kids 9-14, at River Riders in historical Harpers Ferry. Your child's weekly adventures will include white water rafting, kayaking, tubing, Aerial Adventure Park climbing and our eight zip line canopy tour! All activities are facilitated by River Riders' highly trained guides, who make it their goal to share their experience and passion for adventure and the outdoors with your child. Throughout the summer our adventure camps will provide your child with increased confidence, lifelong memories and lots of fun! River Riders is located at 408 Alstadts Hill Road, Harpers Ferry, WV 25425.

River Riders	9-14 yrs / 3 days / \$189	
Program #4361	Wed-Fri, 6/14-6/16	8:30 am-4:00 pm
<hr/>		
	9-14 yrs / 1 wk / \$289	
Program #4362	Mon-Fri, 6/19-6/23	8:30 am-4:00 pm
Program #4363	Mon-Fri, 6/26-6/30	8:30 am-4:00 pm
Program #4364	Mon-Fri, 7/10-7/14	8:30 am-4:00 pm
Program #4365	Mon-Fri, 7/17-7/21	8:30 am-4:00 pm
Program #4366	Mon-Fri, 7/24-7/28	8:30 am-4:00 pm
Program #4367	Mon-Fri, 7/31-8/4	8:30 am-4:00 pm
Program #4368	Mon-Fri, 8/7-8/11	8:30 am-4:00 pm

Nature & Ecology Camps

Nature Trail Explorers

Join the Eastern Panhandle Conservation District for a fun 3-days in our park, exploring our trail system. Your child will have fun identifying trees, plants and animals. Camp will also include other activities such as stories, crafts, coloring. Children will also get to build their very own forest. Camp will meet in the lobby of the community center each day and will then venture outdoors for the morning.

5-10 yrs / 3 days / \$10
Instructor ECPC - Heather Ishman
Sam Michael's Park
Program #4432 Mon-Wed, 8/7-8/9 9:00-11:00am

Little Explorers

Enjoy a fun filled week of nature hikes, exploring the park grounds at Sam Michael's and catching nature at its finest. This week will include stories, games, crafts and other nature and ecology based activities.

4-7 yrs / 1 wk / \$35	Instructor Heidi Citro
	Sam Michael's Park
	Program #4433
Mon-Fri, 6/12-6/16	9:00 am-12:00 pm
<hr/>	
	Program #4434
Mon-Fri, 6/26-6/30	9:00 am-12:00 pm

Mommy & Me Karate

Bring an adult buddy to help you improve coordination and balance. This is a perfect opportunity to play and learn skills together. Wear loose fitting clothing, and be prepared to go barefoot.

1-5 yrs / 6 wks / \$49

Jefferson County Community Center
Program #4259 Sun, 6/25-8/6
1:45-2:15 pm

Little Dragons

The classes will cover basic karate skills, balance, coordination, self control, respect and, most importantly, the children will have fun! Wear loose fitting clothing.

3-5 yrs / 6 wks / \$49

Jefferson County Community Center
Program #4260 Sun, 6/25-8/6
2:30-3:00 pm

Little Ninjas

This is a traditional beginner karate course for youth ages 4-6. Participants will learn balance, coordination, respect, discipline, self-esteem, self-control, and more-- all while having fun!

4-6 yrs / 6 wks / \$55

Jefferson County Community Center
Program #4261 Sun, 6/25-8/6
3:15-3:45 pm

Ninjas

Are you a beginner-intermediate level participant or an experienced belt holder? Come out and join our traditional karate class. Develop or hone your karate skills while you gain balance, control, coordination, strength, and flexibility. **Optional belt testing with our instructor is available! Please see your instructor for more details.**

7 yrs & up / 6 wks / \$65

Jefferson County Community Center
Program #4262 Sun, 6/25-8/6
4:00-5:00 pm

Advanced Ninjas

For advanced students who are interested in learning more self-defense and testing for belts. Previous training is required for this class whether it has been through parks and recreation or from another instructor.

All students with previous experience are welcome.

7 yrs & up / 6 wks / \$65

Jefferson County Community Center
Program #4263 Sun, 6/25-8/6
5:15-6:15 pm

Teen Ninjas

Are you a beginner-intermediate level participant or an experienced belt holder? This class is a continuation of Ninja class for more advanced students. Develop or hone your karate skills while you gain balance, control, coordination, strength, and flexibility. **Optional belt testing with our instructor is available! Please see your instructor for more details.**

13-17 yrs / 6 wks / \$65

Jefferson County Community Center
Program #4264 Sun, 6/25-8/6
6:30-7:30 pm

Homeschool Karate

Gain confidence and discipline while learning the basics of martial arts in a friendly and warm atmosphere.

6-12 yrs / 6 wks / \$59

Jefferson County Community Center
Program #4265 Sun, 6/25-8/6
12:45-1:30 pm

All Classes are taught by Ms. Chelsy Erickson.

Kids should wear comfortable clothes, and be prepared to go barefoot.

Belt testing is available.

Please ask Ms. Chelsy for more information.

**** Please note: Martial Arts classes will NOT be held on July 2! ****

Martial Arts Camp

Karate Camp

Learn new skills, make new friends and have hours of fun in a safe, controlled environment. This camp is a great way for a beginner to build basic martial arts skills or for the experienced martial artist to improve on their skills. Camps include but are not limited to agility exercises and drills to build strength, endurance and coordination. Gain life-skills, problem solving, conflict resolution, respect, discipline and confidence. Hours of fun are spent playing small sided games that will challenge your kids mentally and physically.

4-7 yrs / 1 wk / \$65 Instructor Chelsy Erickson

Jefferson County Community Center
Program #4435 Mon-Fri, 7/10-7/14
1:00-4:00 pm

Program #4436 Mon-Fri, 8/7-8/11
1:00-4:00 pm

7-12 yrs / 1 wk / \$80 Instructor Chelsy Erickson

Jefferson County Community Center
Program #4437 Mon-Fri, 7/24-7/28
1:00-4:00 pm

Pre-Ballet 1

Join the Royal Stars dance at Jefferson County Parks & Recreation and learn the fundamental steps of ballet. All students are asked to wear pink tights, pink shoes and pink leotard. Hair should be pinned in bun or out of face. Class size is limited to 10 children.

5-7 yrs / 6 wks / \$60 Instructor Cara Patterson
Jefferson County Community Center
Program #4285 Sun, 6/25-8/6 5:30-6:30 pm
 (no class 7/2)

Ballet 1

Designed for students who have graduated from at least one year of pre-ballet at Royal Stars or transferring from other school. Students will learn the fundamentals of a ballet barre and center steps. Class is limited to 10 students. Those who have earned a blue star or above in previous classes at Royal Star may wear royal blue leotard, all others should wear a black leotard. All students wear pink tights, pink shoes. No skirts, hair in bun or pinned out of face.

6 yrs & up / 6 wks / \$55 Instructor Cara Patterson
Jefferson County Community Center
Program #4281 Sun, 6/25-8/6 4:20-5:20 pm
 (no class 7/2)

Hip Hop

Hip hop, a fast and upbeat form of urban dance elements will be incorporated into this class. Students should wear comfortable clothing and jazz shoes or sneakers for class.

7 yrs and up / 6 wks / \$55 Instructor Cara Patterson
Jefferson County Community Center
Program #4282 Sun, 6/25-8/6 2:00-3:00 pm
 (no class 7/2)

Jazz

This class combines the basics of ballet along with teaching rhythm and coordination. The students will grow to love the fine art of ballet. Pink leotard and ballet slippers are recommended.

7 yrs and up / 6 wks / \$55 Instructor Cara Patterson
Jefferson County Community Center
Program #4283 Sun, 6/25-8/6 3:10-4:10 pm
 (no class 7/2)

Dance Express

This class is a great way for beginner dancers to have the opportunity to try many types of dance. Each class will begin with a quick warm-up stretch. Classes will be dedicated to introducing a different style of dance. Some of the styles included but not limited to are...ballet, jazz, hip hop and lyrical. On the last week of class, parents will have the opportunity to see what the children have learn with a small performance.

5-8 yrs and up/6 wks/\$55 Instructor Cara Patterson
Jefferson County Community Center
Program #4284 Sun, 6/25-8/6 12:50-1:50 pm
 (no class 7/2)



Dance Summer Camp

Beginner Ballet/Tap Workshop

Your child will enjoy this introductory workshop to ballet and tap. Learn the basic fundamentals of these styles of dance. Tap shoes are not required.

4-8 yrs / 1 wk / \$60 Instructor Mikaela Petersen
Jefferson County Community Center
Program #4389 Mon-Fri, 7/10-7/14 9:00am-12:00pm

Intermediate Ballet/Tap Workshop

Your child will enjoy this introductory workshop to ballet and tap. Learn the basic fundamentals of these styles of dance. Tap shoes are not required. Children should have some knowledge and experience in Tap before taking this camp. But an emphasis will be placed on brushing up on basics as well as learning new steps.

6-12 yrs / 1 wk / \$60 Instructor Mikaela Petersen
Jefferson County Community Center
Program #4390 Mon-Fri, 7/10-7/14 1:00-4:00pm

Princess Dance Camp

Your child will enjoy this week-long princess themed camp filled with dance, songs, crafts and stories. Each day your child will explore a new princess. On the last day, a short dance will be performed for the parents. Dancers should come in comfortable attire with hair pulled away from their face. Dance clothes and ballet shoes are recommended. No previous dance experience necessary.

4-12 yrs / 1 wk / \$70 Instructor Mikaela Petersen
Jefferson County Community Center
Program #4391 Mon-Fri, 7/24-7/28 9:00am-12:00pm

Little Stars Dance Camp

This camp is designed to be fun and will help your child's flexibility and hand-eye coordination. The camp may include an introduction to ballet, tap, and jazz movement. Children will also have a chance to play, make craft projects and more!

3-5 yrs / 1wk / \$60 Instructor Mikaela Petersen
Jefferson County Community Center
Program #4392 Mon-Fri, 7/24-7/28 1:00-3:00pm

Tumble Bugs

This 40 minute parent participation preschool gymnastic program is ideal for the beginner tumbler. This program focuses on developing your child's gymnastic and creative movement skills. Gymnasts will learn the basics of rolls, handstands and jumps all while developing their upper and lower body coordination, flexibility and strength. Walk on the beam and swing on the bars, this program is fun for both the child and the adult.

2-3yrs / 6 wks / \$47

Jefferson County Community Center

Program #4267 Sun, 6/25-8/6

1:00-1:45 pm (no class 7/2)

Tumble Bunnies

A fun and imaginative way to learn gymnastics basics. Our 45 minute beginner preschool gymnastic program is designed to introduce basic gymnastic skills to young children who have no gymnastic experience and to those who have not yet mastered basic gymnastic skills. Gymnasts will work on skills using the beam, bars and springboard. Gymnasts will learn forward and backward rolls, bridges, handstands and cartwheels. This introduction to basic gymnastics is both fun and rewarding as the gymnast discovers the many new ways that they can move.

3-4 yrs / 6 wks / \$58

Jefferson County Community Center

Program #4268 Sun, 6/25-8/6

2:00-2:45 pm (no class 7/2)

Tumble Bears

Our beginner program is designed to introduce basic gymnastic skills to young children who have no gymnastic experience and to those who have not yet mastered basic gymnastic skills. Gymnasts will work on skills using the beam, bars and springboard. Gymnasts will learn forward and backward rolls, bridges, handstands and cartwheels. This introduction to basic gymnastics is both fun and rewarding as the gymnast discovers the many new ways that they can move.

4-6 yrs / 6 wks / \$63

Jefferson County Community Center

Program #4269 Sun, 6/25-8/6

3:00-4:00 pm (no class 7/2)

Beginner Gymnastics

In this 60 minute program students will learn the proper fundamentals of gymnastics. Our fun filled weekly lesson plans will keep the students interested and excited about learning the basics of gymnastics. Gymnasts will work on skills using the beam, bars and springboard. Gymnasts will learn forward and backward rolls, bridges, handstands and cartwheels. This introduction to basic gymnastics is both fun and rewarding.

6-12 yrs / 6 wks / \$63

Jefferson County Community Center

Program #4270 Sun, 6/25-8/6

4:15-5:15 pm (no class 7/2)

Intermediate Gymnastics

This program is for gymnasts that have mastered basic positions and skills. The intermediate gymnastic level introduces the gymnast to skills on the high beam, handstand forward rolls, round offs, front walkovers and back walkovers. Gymnasts will also work on skills using the bars and springboard. Independent cartwheel required for this class.

6-14 yrs / 6 wks / \$63

Jefferson County Community Center

Program #4271 Sun, 6/25-8/6

5:30-6:30 pm (no class 7/2)

Fundamentals of Cheerleading

This program is ideal for beginners who want to learn cheerleading. Children will be taught basic knowledge of cheerleading moves and motions, beginner tumbling skills, cheers and chants, and more.

6-15 yrs / 6 wks / \$63

Jefferson County Community Center

Program #4272 Sun, 6/25-8/6

6:45-7:45 pm (no class 7/2)



Gymnastics & Cheer Camps

Gymnastics Camp

In this camp gymnasts will learn the proper fundamentals of gymnastics. Our fun filled lesson plans will keep the campers interested and excited about learning the basics of gymnastics. Gymnasts will work on skills using the beam, bars and springboard. Gymnasts will learn forward and backward rolls, bridges, handstands and cartwheels. This introduction to basic gymnastics is both fun and rewarding. Parents please provide snacks for your child, as we will be breaking daily for a snack.

4-12 yrs / 1 wk / \$80

Jefferson County Community Center

Program #4394 Mon-Fri, 6/12-6/16 1:00-4:00pm

Program #4395 Mon-Fri, 7/17-7/21 1:00-4:00pm

Cheerleading Camp w/ Shepherd Rams

If your child is interested in becoming a cheerleader, this is a perfect opportunity to learn what the sport is all about! Our clinics, taught by Shepherd College Coach, Lindsey Bordovsky and her cheerleaders, incorporate the fundamentals of cheering- arm movements, jumps, dance, stunting, tumbling, and a variety of cheers and chants that incorporate these skills.

4-16 yrs / 1 wk / \$89

Jefferson County Community Center

Program #4393 Mon-Fri, 6/19-6/23 1:00-4:30 pm

JCPRC Swim at Jefferson Memorial Park Pool



Jefferson County Parks and Recreation and Charles Town Parks and Recreation are partnering together to bring you summer swim lessons!

Summer Swim lessons are taught by the Jefferson Memorial Pool staff. Instructors are Red Cross Certified Lifeguards and/or Instructors.

All Lessons are Monday-Thursday.
Cost: \$50/week

Friday will be used for make-up. For everyone's safety the baby pool will not be accessible during swim lessons.

Only registered students will be permitted in the main pool and only during their class time.

Guppies 1 - Ages 3-5

Children will be in the water standing or wear backpacks. Focus will be on comfort in the water and independent movements leading to gliding and floating without backpacks.

Goals for this class are:

- Enter the water willingly and/or independently.
- Blow Bubbles
- Put face in the water
- Skull with support or standing
- Kick with a kickboard or holding wall
- Front and back glides
- Supported back float

Program #4313	Mon-Thur, 6/12-6/15	10:10-10:40 am
Program #4314	Mon-Thur, 6/26-6/29	10:10-10:40 am
Program #4315	Mon-Thur, 7/10-7/13	10:10-10:40 am
Program #4316	Mon-Thur, 7/24-7/27	10:10-10:40 am
Program #4317	Mon-Thur, 7/31-8/3	10:10-10:40 am
Program #4318	Mon-Thur, 6/12-6/15	11:20-11:50 am
Program #4319	Mon-Thur, 6/26-6/29	11:20-11:50 am
Program #4320	Mon-Thur, 7/24-7/27	11:20-11:50 am
Program #4321	Mon-Thur, 7/31-8/3	11:20-11:50 am
Program #4322	Mon-Thur, 7/31-8/3	6:10-6:40 pm

Guppies 2 - Ages 4-5

Children who can demonstrate all skills in Guppy 1, especially entering water independently and putting their face in the water, will be enrolled in Guppies 2. Students may wear backpacks. The focus of this class will be on beginning front crawl skills.

Goals for this class are all of Guppy 1 plus:

- Step or jump into chest deep water
- Bobbing 5-10 times while holding the wall
- Retrieving an item from bottom in chest deep water
- Front float
- Arm and leg motions on front
- Treading/floating for 20 seconds

Program #4323	Mon-Thur, 6/12-6/15	10:45-11:15 am
Program #4324	Mon-Thur, 6/26-6/29	10:45-11:15 am
Program #4325	Mon-Thur, 7/10-7/13	10:45-11:15 am
Program #4326	Mon-Thur, 7/24-7/27	10:45-11:15 am
Program #4327	Mon-Thur, 7/31-8/3	10:45-11:15 am
Program #4328	Mon-Thur, 7/31-8/3	6:45-7:15 pm

Goldfish - Ages 6 & up

Children should be at least 6 years old and MUST be able to stand in 30 inches of water. This level focuses on floating, beginning front crawl, and treading.
(This level will NOT use backpacks)

Goals for this class are:

- Enter and exit water independently
- Blow bubbles
- Bob 10 times
- Retrieving an item from bottom in chest deep water
- Front & Back Glide, Front & Back Float
- Front crawl for 5 body lengths
- Tread for 20 seconds

Program #4307	Mon-Thur, 6/12-6/15	9:35-10:05 am
Program #4308	Mon-Thur, 6/26-6/29	9:35-10:05 am
Program #4309	Mon-Thur, 7/10-7/13	9:35-10:05 am
Program #4310	Mon-Thur, 7/24-7/27	9:35-10:05 am
Program #4311	Mon-Thur, 7/31-8/3	9:35-10:05 am
Program #4312	Mon-Thur, 7/31-8/3	5:35-6:05 pm

Pufferfish - Ages 6 & up

Children should be at least 6 years old (but most will be 8-10 yrs old) and MUST be able to stand in 30 inches of water. Children must be able to do a combination of floating/swimming/treading in deep water for 15 seconds to be ready for this level. Pufferfish will work on perfecting their front crawl while also learning back stroke, butterfly, and breaststroke.

Goals for this class are:

- Float & tread for 60 seconds
- Front crawl 25 yards
- Elementary backstroke 25 yards
- Begin butterfly, breast, and back stroke

Program #4289	Mon-Thur, 6/12-6/15	9:00-9:30 am
Program #4290	Mon-Thur, 6/26-6/29	9:00-9:30 am
Program #4291	Mon-Thur, 7/10-7/13	9:00-9:30 am
Program #4293	Mon-Thur, 7/24-7/27	9:00-9:30 am
Program #4295	Mon-Thur, 7/31-8/3	9:00-9:30 am
Program #4298	Mon-Thur, 7/31-8/3	5:00-5:30 pm

Shark - Ages 6 & up

Sharks must be at least 6 years old (but most will be 11-12 yrs old) and MUST be able to stand in 30 inches of water. Prior to entering this level, children should be able to front crawl for 25 yards and elementary backstroke for 25 yards. This level will focus on stroke development and strength, competitive swimming techniques, and basic lifeguard rescue skills.

Goals for this class are:

- Competitive entry (shallow dive)
- 50 yards each: front crawl, backstroke, breaststroke
- Lifeguarding recognition skills (drowning vs. distress)
- Simple Lifeguard rescues

Program #4301	Mon-Thur, 6/12-6/15	9:00-9:30 am
Program #4303	Mon-Thur, 6/26-6/29	9:00-9:30 am
Program #4305	Mon-Thur, 7/24-7/27	9:00-9:30 am
Program #4306	Mon-Thur, 7/31-8/3	9:00-9:30 am

Family Swim

Want to jump in the pool but can't make it during the week? The Jefferson Memorial Park Pool will offer an open swim option on Saturday mornings from 10am-12pm.

Cost \$2/person, children 2 and under are free.

Sports Camps

Amazing Athletes Camp

Sports instruction designed for preschool children to keep young athletes focused, active and having fun. They may explore soccer, basketball, football, T-ball, tennis and golf. Using special kid-friendly terms, your child will learn proper techniques for each sport, fundamentals of scoring, rules and terminology. Class includes proper warm-up, cardio exercise, muscle toning, hand-eye coordination drills, and speed and agility exercises. Children will have fun with a sports craft. Please pack water and small snack.

4-6 yrs / 1 wk / \$75 Instructor Heidi Citro

Jefferson County Community Center

Program #4410 Mon-Fri, 7/17-7/21 9:00 am-12:00 pm

Program #4411 Mon-Fri, 8/7-8/11 9:00 am-12:00 pm

All Sports Kinder Camp

This camp will introduce basic fundamental skills in different sports. Develops and promotes hand-eye coordination, movement, balance, and most importantly having fun. Sports may include basketball, T-ball, tennis, soccer and more. Children will also have fun with a sports craft. Please pack water and a small snack.

3-5 yrs / 1 wk / \$75 Instructor Heidi Citro

Jefferson County Community Center

Program #4407 Mon-Fri, 6/19-6/23 9:00am-12:00 pm

Program #4408 Mon-Fri, 7/10-7/14 9:00am-12:00 pm

Program #4409 Mon-Fri, 7/24-7/28 9:00am-12:00 pm

Archery Camp

Youth ages 6-14 are encouraged to try this camp. Archery can be a rewarding, life long activity which develops self confidence and discipline. The camp is broken into two sessions: Beginner or Intermediate. Participants should bring water to camp. Camp spaces are limited so please register early.

6-14 yrs / 4 days / \$92 Instructor Jay Earl

Mason Pavilion in Sam Michael's Park

Program #4451 Mon-Thur, 6/12-6/15 8:30am-12:00pm

Program #4452 Mon-Thur, 7/10-7/13 8:30am-12:00pm

Program #4453 Mon-Thur, 7/31-8/3 8:30am-12:00pm

Volleyball Camp

Enjoy a fun volleyball camp which will cover a variety of skills, drills, and games. This camp will focus on fine tuning the skills of intermediate and advanced players.

13-16 yrs / 4 days / \$75

Instructors Camp Espiritu/Heather Niedermeier

Jefferson County Community Center

Program #4417 Mon-Thur, 7/31-8/3 6:00-8:00 pm

Volleyball Camp

Enjoy a fun volleyball camp which will cover a variety of skills, drills, and games. This camp will focus on fine tuning the skills of intermediate players.

10-12 yrs / 3 days / \$45

Instructors Camp Espiritu/Heather Niedermeier

Jefferson County Community Center

Program #4416 Wed-Fri, 7/26-7/28 6:00-8:00 pm

Sports Express Camp

If you don't want your child sitting around this summer, then try this camp for youth ages 6-13. Campers may have the opportunity to experience a variety of sports and games which might include flag football, kickball, whiffle ball, badminton, floor hockey, archery, swimming, basketball, volleyball, pickleball and much more. Campers must bring a packed lunch and water bottle.

6-13 yrs / 3 days / \$60 Instructor Jay Earl

Jefferson County Community Center

Program #4400 Wed-Fri, 6/7-6/9 9:00 am-5:00 pm

6-13 yrs / 1 wk / \$92 Instructor Jay Earl

Jefferson County Community Center

Program #4401 Mon-Fri, 6/19-6/23 9:00 am-5:00 pm

6-13 yrs / 1 wk / \$92 Instructor Jay Earl

Jefferson County Community Center

Program #4402 Mon-Fri, 6/26-6/30 9:00 am-5:00 pm

6-13 yrs / 1 wk / \$92 Instructor David Viands

Jefferson County Community Center

Program #4403 Mon-Fri, 7/10-7/14 9:00 am-5:00 pm

6-13 yrs / 1 wk / \$92 Instructor David Viands

Jefferson County Community Center

Program #4404 Mon-Fri, 7/17-7/21 9:00 am-5:00 pm

6-13 yrs / 1 wk / \$92 Instructor Jay Earl

Jefferson County Community Center

Program #4405 Mon-Fri, 7/24-7/28 9:00 am-5:00 pm

6-13 yrs / 1 wk / \$92 Instructor Jay Earl

Jefferson County Community Center

Program #4406 Mon-Fri, 8/7-8/11 9:00 am-5:00 pm

Little All Stars

Bring your little one to this fun and entertaining class where they will learn the basics of several sports skills. Learn and practice kicking, throwing, dribbling, shooting and reinforce those skills with fun small sided games like red light green light and sharks and minnows.

3-6 yrs / 6 wks / \$40 Instructor Heidi Citro

Jefferson County Community Center

Program #4087 Tues, 4/25-5/30 11:00-11:45 am

Program #4090 Wed, 4/26-5/31 10:00-10:45 am

Program #4093 Wed, 4/26-5/31 4:30-5:15 pm

Scholarships Available

Scholarships are available for some programs.

Contact Brenda at the JCPRC

(304) 728-3207 or email bwhittington@jcprc.org.

Slam'n Jam'n Basketball Camp w/ Shepherd Rams

Have you ever wanted to learn how to play like a Shepherd Ram? This could be your opportunity. If you are between the ages of 6-17, you can sign up for one of the Slam'n Jam'n Camps this summer that will be instructed by Shepherd University Head Coach Justin Namolick, and his staff and players. This camp for boys and girls is designed for beginner to advanced basketball players. Participants will enjoy a memorable week learning new skills and tactics while refining their passing, dribbling, and shooting skills as well as providing individual fundamental instruction that is applied to the team concept. Each camper will receive a camp T-shirt. Each camper must wear comfortable clothes, sneakers, and bring a snack and water bottle to camp daily.

6-17 yrs / 4 days / \$85
Instructor Shepherd Basketball Coaching Staff
Jefferson County Community Center
Program #4396 Mon-Thur, 6/12-6/15
9:00am-12:00pm

Middle School XC Summer Camp

Coaches from Jefferson High School will be organizing this camp. Emphasis will be on developing proper training habits and finding ways to make running fun. Runners will become familiar with warm-up, stretching, and strength training routines. Athletes will also learn to focus on proper running form and will acquire an understanding of effective racing strategies. Be sure to bring a water bottle to camp each day. The registration fee includes entry into the Cougar Challenge 5K XC race on June 25th. Friday will be held as a rain make-up day.

Rising 6-8th graders / 4 days / \$69
Sam Michael's Park XC Course
Program #4415 Mon-Thur, 6/12-6/15 8:00-10:00 am

Basketball Shooting Camp



Train Great Fitness Shooting Camp is excellent for novice, intermediate, and elite shooters. Participants will be coached through a perfected series of drills that teach the player the correct way to shoot and how to correct their shot when necessary. The participant will be taught how to shoot with form and how to put finesse on their shot. Mid-range, long-range, and backboard shots will be the focus while being coached on nearly every shot. Come Train Great with us and learn our signature technique to build and perfect a for jump shot.

9-18 yrs / 1 wk / \$100 Instructor Train Great Fitness Staff
Jefferson County Community Center
Program #4397 Mon-Fri, 6/26-6/30 10:00am-12:00 pm

Basketball Camp



Train Great Fitness Basketball Camp is the complete basketball training experience. During the camp, participants will be put through drills, scenario, and training activities to sharpen their game and challenge their ability. The participants will experience training in agility, speed, reaction, defense, offense, form shooting, free throw shooting, passing, layups, and more. Participants should expect to be grouped into teams and compete amongst each other in an organized fashion. Learn what it truly is to Train Great for basketball.

9-18 yrs / 4 days / \$200 Instructor Train Great Fitness Staff
Jefferson County Community Center
Program #4389 Mon-Th, 7/31-8/3 9:00 am-2:00 pm

Brazilian United Soccer Academy—Full Day

An excellent opportunity for players of all ages to experience this wonderful game which combines traditional Brazilian technical and tactical practices and also brings and incredible culture exchange. Kids will play soccer through a variety of drills and small sided games.

If registration is made 7 days prior to the start of camp, each child will receive a soccer ball and a jersey.

7-12 yrs / 1 wk / \$180
Sam Michael's Park (behind the JCCC)
Program #4412 Mon-Fri, 7/31-8/4 9:00 am-4:00 pm

Brazilian United Soccer Academy - Mini Camp

With lots of fun, this program will introduce the basic soccer skills with exciting and involving ludic games and basic coordination movements that help kids develop not only their motor skills, but also social and psychological aspects of their life.

If registration is made 7 days prior to the start of camp, each child will receive a soccer ball and a jersey.

3-4 yrs / 1 wk / \$95
Sam Michael's Park (behind the JCCC)
Program #4413 Mon-Fri, 7/31-8/4 9:00-10:30 am

5-6 yrs / 1 wk / \$95
Sam Michael's Park (behind the JCCC)
Program #4414 Mon-Fri, 7/31-8/4 10:30 am-12:00 pm

Flag Football Camp

This camp is aimed at teaching your child the basics of flag football. We will learn offensive and defensive moves as well as specialty skills. Please be sure to send a snack and bottled water to camp with your child. We will be outside for part of the camp.

5-9 yrs / 4 days / \$55 Instructor David Viands
Sam Michael's Park - Multi-purpose field behind JCCC
Program #4399 Mon-Th, 6/12-6/15 1:00-3:00 pm

Archery

Enjoy this beginner to intermediate class for kids. This sport can be a rewarding, lifelong activity which develops self-confidence and discipline. This course is designed to acquaint the beginner archer with basics in care and use of the equipment as well as technique. Participants are encouraged to wear comfortable clothing and sneakers.

8-16 yrs / 6 wks / \$74 Instructor Jay Earl
Sam Michael's Park - Mason Pavilion
Program #4100 Thurs, 4/27-6/1 4:30-5:30 pm

Archery 101, Skills Development

The sport of archery has a long history that started long before recorded history. Today modern archers meet with bow and arrows for fun, recreation, or competition. In America, the traditions of archery through all the generations of our history still find expression as a popular individual sport. Archery can be learned and enjoyed as a recreational sport that is found in thousands of neighborhoods all over the US in the form of archery clubs, field archery, and for hunting, as well as for national and international competition. In this class we will learn about safety, tackle, and shooting techniques that when used correctly will provide consistent accuracy when shooting at a target. Students will learn basic techniques that when applied will improve individual shooting skills for recreational archery. The student will learn about equipment and safety while on the archery range. Equipment is provided. Instructed by certified archery in the schools instructor.

11 yrs & up / 4 days / \$85 Instructor Clark Dixon
Sam Michael's Park - Mason Pavilion
Program #4101 Mon/Tues/Wed/Fri, 5/15, 5/17-5/19
4:00-5:30 pm

Archery 201, Improving your Archery Skills

In this class we will review safety on the archery range, equipment, and shooting techniques that when used correctly will provide consistent accuracy when shooting at a target. The student will fine tune techniques to improve skills for improved accuracy. The student will learn about keeping score and practice shooting. Equipment is provided. Instructed by certified archery in the schools instructor.

11 yrs & up / 4 days / \$85 Instructor Clark Dixon
Sam Michael's Park - Mason Pavilion
Program #4102 Mon-Thur, 6/26-6/29 5:15-6:45 pm

Archery 301, Advanced Archery

In this class we review safety on the archery range, tackle, and shooting techniques that when used correctly will provide consistent accuracy when shooting at a target. Lots of shooting to improve accuracy. Students will record scores each round. Increased and consistent scores will indicate improvement. Equipment is provided.

11 yrs & up / 4 days / \$85 Instructor Clark Dixon
Sam Michael's Park - Mason Pavilion
Program #4103 Mon-Thur, 7/31-8/3 5:15-6:45 pm

SNAG Golf

Are you interested in getting your child started playing golf? Our instructors use the SNAG (Starting New At Golf) system. SNAG Golf is all about having FUN while learning the basics. SNAG incorporates developmentally appropriate equipment that will allow golf to be learned and played in non-traditional venues, such as on a soccer field or in a gym.

8-13 yrs / 8 wks / \$65
Jefferson County Community Center
Program #4108 Wed, 4/26-5/31 4:30-5:30 pm



Sports Leagues

Men's Softball League

Jefferson County will be offering it's Men's Softball League this spring/summer. Games will start in May and run through June. If interested, or for more information contact Jason DeAngelo at jasonda35@gmail.com or 304-283-6904.

Sam Michael's Park & Leetown Park

Sun, 6/4-8/27

Program #4286 18 & up Individual Fee - \$65

Summer Basketball League

Jefferson County Parks & Recreation Commission will be offering a summer teen basketball league for rising 9th through 12th graders. Games will be held on Saturday evenings, starting 6/10. Teams will play 8 games and will finish the season with a single-elimination tournament on Saturday, August 12. There will be no scheduled practices for teams during the course of this league. There will be a coaches meeting held on Thursday, June 1st at 6pm at the JC Community Center. No games on Saturday, July 1st.

Rising 9th-12th graders

Games Saturday evenings, starting 6/10

Program #4287 Individual Fee - \$65

Girl's Volleyball League

This is a girl's recreational league designed for players to learn the fundamental volleyball skills and teamwork. Our goal is to provide an atmosphere that promotes sportsmanship, fair play in a safe environment for players, coaches, officials and spectators. Background checks will be conducted on all volunteer coaches. Volunteer coaches are required to attend a pre-season orientation and coaches meetings. Teams will practice two nights per week at the Jefferson County Community Center or Wildwood Middle School. Practices will begin on Tues., April 11th. Practices are held on Tues. and Thurs. League games will start on Saturday, April 29th. Teams will play 8 games. Participant's age is determined by how old they will be on April 1st. Game times will vary on Saturdays between 9am-4pm. **COACHES MEETING HELD ON THURSDAY, MARCH 16th AT 6PM AT THE JEFFERSON COUNTY COMMUNITY CENTER. NO GAMES ON SAT., MAY 27th.**

Week 8 will consist of a league wide tournament.

Program #4118 8-10yrs Individual Cost: \$60

Program #4119 8-10yrs Coach/Sibling Cost: \$50

Program #4120 11-13yrs Individual Cost: \$60

Program #4119 11-13yrs Coach/Sibling Cost: \$50

Celebrate your Special Day in your Jefferson County Park

Whether you're celebrating a
Birthday, Anniversary, Bridal or Baby Shower,
Family Reunion or Graduation,
Jefferson County Parks and Recreation has a space for you!

Outdoor Pavilions include picnic tables, grills,
access to kitchens and playgrounds.

The Jefferson County Community Center offers tables, chairs,
optional inflatables, toys, sports equipment and more.

For rental information go to www.jcprc.org
or call our office at 304-728-3207

Art Camps

Nature & Art Camp

For the creative kid who just can't stay cooped up in the studio! Campers will learn about artists influenced by nature, like John James Audubon, Georgia O'Keeffe, and Vincent VanGogh. Campers will paint, draw, and even sculpt, and we will be outside every day, exploring nature to find our own inspiration-- and materials-- for our own unique artwork. Discover where Art and Science meet!

A \$10 supply fee is due to instructor (cash or check) on first day of camp.

**Jefferson County Community Center
6-12 yrs / 1 wk / \$75
Instructor Emily Vaughn
Program #4418 Mon-Fri, 6/26-6/30
1:00-4:00 pm**

Art & Architecture Camp

Do you love to dream up cities of the future? Are you curious what goes into planning a building? Are Legos your favorite toy? Then this camp is for you! Campers will discover the artistry that goes into building the world, create blueprints and 3-D models of their dream buildings, and be inspired by architects such as Frank Lloyd Wright, Filippo Brunelleschi, and Frank Gehry.

A \$10 supply fee (cash or check) is due to instructor on first day of camp.

**6-12 yrs / 1 wk / \$75
Jefferson County Community Center
Instructor Emily Vaughn
Program #4419 Mon-Fri, 7/10-7/14
1:00-4:00 pm**

3D Art Camp

For the artist that likes to build, sculpt, and form, this class is for you! Create mobiles like Alexander Calder and George Rickey. We will use materials such as wire, beads, clay, recycled items, and items from nature. Please bring a light snack, water and creative mind! Emphasis is on imagination and fun! **A \$10 supply fee (cash or check) is due to instructor on first day of camp.**

**7-13 yrs / 1 wk / \$70
Jefferson County Community Center
Instructor Sheri Fiolek
Program#:4422 Mon-Fri, 7/17-7/21
9:00 am-12:00 pm**

**Scholarships are available for some programs.
Please contact Brenda at: 304-728-3207
or email: bwhittington@jcprc.org**

Fine Arts Studio

Campers of all ability levels will experiment with paints, pastels, charcoal, and more! Paint a still life of a donut, draw a self portrait as a superhero, design a tag in graffiti-style letters, and paint a landscape in the open air of the park.

A \$10 supply fee (cash or check) is due to instructor on first day of camp.

**6-12 yrs / 1 wk / \$75
Jefferson County Community Center
Instructor Emily Vaughn
Program #4420 Mon-Fri, 6/19-6-23
1:00-4:00 pm**

Comics & Cartooning Camp

Do you love to read comic books, watch cartoons, or draw funny pictures? Campers will draw, paint, and even animate during this week of cartooning fun. Learn about the invention of animation, the art of drawing a good caricature, create your own comic book, and even draw in popular Japanese anime and manga style.

A \$15 supply fee (cash or check) is due to instructor on first day of camp.

**6-12 yrs / 1 wk / \$75
Jefferson County Community Center
Instructor Emily Vaughn
Program #4421 Mon-Fri, 7/24-7/28
1:00-4:00 pm**



Art Adventures

Explore your world through art. Artists will experiment with a variety of art materials such as chalk, pastels, paint, pencil, and 3D creations. Famous artists will be introduced as inspiration for our projects, with an emphasis on letting your imagination run wild! This class is a great opportunity to get a taste of various art styles and techniques. Feel free to bring a snack and water, and be prepared to get messy. **A \$10 supply fee (cash or check) is due to instructor on first day of camp.**

**6-9 yrs / 1 wk / \$70
Jefferson County Community Center
Instructor Sheri Fiolek
Program#:4423 Mon-Fri, 7/10-7/14
9:00 am-12:00 pm**

Art Camps

Drawing Camp

Take a look at the world around you, grab your inspiration from what you see! Look at the shapes, lines, forms, colors and combine them to create your own work with different media.

A \$10 supply fee is due to instructor (cash or check) on first day of camp.

South Jefferson Elementary School

9-14 yrs / 4 days / \$70

Instructor Judy Chesley

Program #4447 Mon-Th, 6/5-6/8

9:00 am-12:00 pm

The Wonder of Art

Meet The Masters - Explore the works of the Greatest Artists of the world - then try your hand at creating your own masterpiece... Picasso, O'Keeffe, Cezanne, Klimt, Monet, Stella or Matisse.

A \$10 supply fee is due to instructor (cash or check) on first day of camp.

South Jefferson Elementary School

9-14 yrs / 4 days / \$70

Instructor Judy Chesley

Program #4450 Mon-Th, 6/19-6/22

1:00 -4:00 pm

Printmaking - Making Awesome Impressions!

Experiment with ways to create a design once and make copies or prints. It's amazing to create multiple images -There's chalk, crayons, objects from nature, cardboard, styrofoam and junk.

A \$10 supply fee is due to instructor (cash or check) on first day of camp.

South Jefferson Elementary School

9-14 yrs / 4 days / \$70

Instructor Judy Chesley

Program #4448 Mon-Th, 6/5-6/8

1:00-4:00 pm

Fold It, Wrap It, Coil It!

Learn to fold frogs, butterflies, flowers, birds and more, using the Japanese art form Origami! Learn the origins of the art form and the true story of Sadaku, a young Japanese girl. You will also make awesome nature-inspired clay forms using innovative slab and coil techniques combined with found objects from nature. Press flowers, branches, leaves, acorns, etc. into a rolled slab of clay. Make and paint a pinch or coil pot using traditional methods of score and slip attachment.

A \$10 supply fee is due to instructor (cash or check) on first day of camp.

South Jefferson Elementary School

7-10 yrs / 4 days / \$70

Instructor Jennifer Glymph

Program #4457 Mon-Th, 6/12-6/15

9:00 am - 12:00 pm

Program #4458 Mon-Th, 6/26-6/29

9:00 am - 12:00 pm

Celebrate Cultural Diversity

Grab your passport and let us travel around the world and learn the art of different cultures - Japan, Africa, South America, Quilts, Native American, and Egyptian. Fans, Lanterns, Bookmaking, Dragons, Kimono Dolls, Crests, Carp Kites, Origami Boxes, Weaving & more...

A \$10 supply fee is due to instructor (cash or check) on first day of camp.

South Jefferson Elementary School

9-14 yrs / 4 days / \$70

Instructor Judy Chesley

Program #4449 Mon-Th, 6/19-6/22

9:00 am-12:00 pm



About the Blue Ribbon Recreation Program...

Through a grant provided by Autism Speaks, Eastern Panhandle Indigo Children has partnered with Jefferson County Parks and Recreation Commission to implement **The Blue Ribbon Recreation Program** — designed for persons of all ages and abilities on the autism spectrum. The partnership will allow

individuals with autism to enjoy a successful summer camp and other recreational activities in an inclusive setting with **one-on-one** aides. The Blue Ribbon Recreation Program will accept all applicants on the spectrum who wish to enroll in JCPR classes throughout the 2017 summer program. Your loved one will enjoy all the same opportunities that any typical person would with the assimilation support and guidance of a properly trained one-on-one aide. This is an historic opportunity for our autism community in Jefferson County. Let the fun and physical fitness begin!!!!

For more information and to sign-up your child, please contact Brenda at (304) 728-3207.

Special Interest Camps

Animal Adventures Camp

This camp will explore subjects such as animal behavior, biology, food chain, and the importance of biodiversity and conservation. Under close adult supervision there will be hands on interaction with real, live animals. Each day will feature a new animal friend, such as a reptile, amphibian, mammal, bird, or arthropod. Camp will include education, game, crafts, stories, and creative play. Please send a healthy snack with your child each day.

4-12 yrs / 1 wk / \$150 Instructor Jill Fleet

Jefferson County Community Center

Program #4428 Mon-Fri, 6/19-6/23 9:00 am-12:00 pm

Snake Adventure Camp

This camp will explore subjects such as animal behavior, biology, food chain, and the importance of biodiversity and conservation of snakes. Under close adult supervision there will be hands on interaction with real, live animals. Each day one-two snakes will visit camp. Camp will include education, game, crafts, stories, and creative play. Please send a healthy snack with your child each day. *A \$10 Supply Fee is due to the instructor the first day of class.

4-12 yrs / 1 wk / \$150 Instructor Melissa Kowalski

Jefferson County Community Center

Program #4429 Mon-Fri, 6/26-6/30 1:00-4:00 pm

Bird Adventure Camp

This camp will explore subjects such as behavior, biology, science of flight, birds' jobs in nature, diet, husbandry, and the importance of conservation and biodiversity. Under close adult supervision there will be hands on interaction with real, live birds. Each day one or two different birds will visit camp. Camp will include education, scrapbook making, crafts, feedings and creative play. Please send a healthy snack with your child each day.

*A \$10 Supply Fee is due to the instructor the first day of class.

4-12 yrs / 1 wk / \$150 Instructor Melissa Kowalski

Jefferson County Community Center

Program #4430 Mon-Fri, 8/7-8/11 1:00-4:00 pm

Junior Police Week

Ever wondered what it's like to be a police officer? Well, now you can find out...join us and Sgt. Robert Sell from the Jefferson County Sheriff's Office for a week of fun and excitement! Your child will enjoy activities throughout the week that will highlight what police officers do. Activities may include, K9, SWAT, criminal code, marching and formations, motor vehicle code, CSI, go on a field trip to meet a judge and see the courthouse and much more.

10-15 yrs / 5 days / \$65 Jefferson County Community Center

Program #4446 Mon-Fri, 7/10-7/14 1:00-4:00 pm

Quidditch Camp

Enjoy an entire week learning and playing this fun game inspired by the ever popular Harry Potter books. Kids will learn the game, rules, and play!

7-12 yrs / 1 wk / \$60 Instructor Heidi Citro

Jefferson County Community Center

Program #4427 Mon-Fri, 8/7-8/11 1:00-4:00 pm

Field Trip Camp - with Mr. Earl

Field Trips will leave at different times. Drop-off at the Jefferson County Community Center will be at 9:00 a.m. for the trips on Monday thru Thursday. Friday's trip to Hershey Park will leave from the JCCC at 7am and will return at 6:30pm. Some trips may not leave until later or may leave as early as 9:15 a.m. Please check with the camp director for specific departure/arrival times for each days' trip. During wait time for bus departure and drop off, games and other activities will be provided for the children until they are boarded. Pick-up for campers will be at 4:00 p.m., unless otherwise noted. All trips are transported by Jefferson County School Buses. Campers will be required to bring special items each day. Campers must bring a packed lunch to camp each day, and wear sneakers, along with a snack and plenty of water. Other examples include: swimwear, extra cash for concessions/souvenirs, sun-screen, etc. Parents/Guardians who would like to volunteer to assist with the camp must pay their own fees for entry for each field trip. Parents/Guardians will need to submit a volunteer background check by June 12, 2017 in order to attend any trip. Camp cost includes tickets and admission for all trips daily. Please note, some pick-up times may run late for certain trips due to afternoon traffic.

8-15 yrs / 1 wk / \$245

Jefferson County Community Center

Program #4424 Mon-Fri, 6/26-6/30 9:00 am-4:00 pm

Monday, June 26, 2017

Maryland Zoo, Baltimore, MD

Tuesday, June 27, 2017

Massanutten Resort Indoor Waterpark, McGaheysville, VA

Wednesday, June 28, 2017

Harpers Ferry National Park, Harpers Ferry, WV

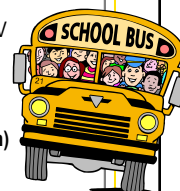
Thursday, June 29, 2017

Greenbriar State Park, Boonsboro, MD

Friday, June 30, 2017

(camp departs at 7:00 am, returns at 6:30 pm)

Hershey Park, Hershey, PA



JCPRC reserves the right to cancel any trip or the entire camp if minimum enrollment numbers are not met. Participating kids need to be registered by JUNE 10 to ensure the camp will run!

LEGO Adventures Camp

Build engineer designed projects such as boats, bridges, mazes, cars, and use special pieces to create your own unique designs. Kids will also have fun with LEGO Star Wars and other fun LEGO kits. Children will not be allowed to take any of the LEGOS home.

7-12 yrs / 1 wk / \$60 Instructor Heidi Citro

Jefferson County Community Center

Program #4425 Mon-Fri, 6/12-6/16 1:00-4:00 pm

Program #4426 Mon-Fri, 7/17-7/21 1:00-4:00 pm

Scholarships are available for some programs.

Please contact Brenda at: 304-728-3207

or email: bwhittington@jcprc.org

LEGO Engineering

Build engineer designed projects such as boats, bridges, mazes, cars and use special pieces to create your own unique designs. Children are not able to take any LEGOs used in this class home.

7-13 yrs / 4 wks / \$60 Instructor Heidi Citro
Jefferson County Community Center

Program #4030 Wed, 4/5-5/3 5:45-7:15 pm
(no class 4/19)
Program #4031 Wed, 5/17-6/7 5:45-7:15 pm

Ms. Shelley's Pony School

These 'parent-child' classes each include a story, song, hands-on activity, a horse lesson, a craft/manipulative and a short riding lesson. Your child will learn a wide range of information about ponies and horses. They will have fun and become more confident around ponies, and gradually learn to control the pony at the walk. This is an ideal program for small children who are fearful around large animals, but will also provide enough hands-on time to please children who are more eager to interact with the horses. Classes may run late due to number of students and to ensure each child has their time with the horse. For more information about Ms. Shelley's Pony School please visit www.msshelleysponyschool.com.

2 1/2-5 yrs / 4 wk / \$65
Instructor Shelley Bloodworth

Majestic Reins Stable

Program #4022	Sat, 4/22-5/13	3:00-4:00 pm
Program #4023	Sat, 4/22-5/13	4:30-5:30 pm
Program #4273	Sat, 5/27-6/17	9:00-10:00 am
Program #4274	Sat, 5/27-6/17	10:30-11:30 am
Program #4275	Sat, 7/1-7/22	9:00-10:00 am
Program #4276	Sat, 7/1-7/22	10:30-11:30 am
Program #4277	Sat, 8/5-8/26	9:00-10:00 am
Program #4278	Sat, 8/5-8/26	10:30-11:30 am
Program #4279	Sat, 9/9-9/30	9:00-10:00 am
Program #4280	Sat, 9/9-9/30	10:30-11:30 am

Learn to Ride

Parents, can't get your child to let you take those training wheels off their bike? Come to Sam Michael's Park to get them off. JCPRC staff will be outside with your child to help them succeed. Most of the training will be done in the grass and with mats in case of a fall. A special technique will also be used to enhance balance before they try to ride. Child must have a helmet. JCPRC will also be doing bike fitting, chain lubrication, tire inflation, and helmet fitting. Please be sure to bring your child's bike. Training wheels must be easy to remove. Please bring them as well if your child uses them.

4-10 yrs / 1 day / \$18 Instructor Jeff Fiolek
Jefferson County Community Center,
rear parking lot.

Program #4026	Sat, 4/22	10:00 am-12:00 pm
Program #4027	Sat, 5/20	10:00 am-12:00 pm
Program #4256	Sat, 7/15	10:00 am-12:00 pm
Program #4257	Sat, 8/12	10:00 am-12:00 pm
Program #4258	Sat, 9/9	10:00 am-12:00 pm

What's Inside? Inventor's Workshop

Have you ever wondered how something works or what it looks like on the inside? Young inventors will have a chance for exploration, destruction, and invention in this newly created class! During the first three weeks of class, kids will be given their own household object to disassemble and explore. Objects will include phones, hand mixers, alarm clocks and more. Parts and pieces will be stored for each participant, so on the last day of class, kids will create their own, new invention with all they have collected. This is a great opportunity for kids to learn what makes ordinary, everyday objects tick, spin, move and work! (Eye protection will be required and provided for each participant. Kids will be using tools such as hammers, hot glue guns, and screwdrivers. A signed waiver will be required before participants will be admitted to class)

8 yrs & up / 4 wks / \$55 Instructor Barb Matlock
Jefferson County Community Center
Program #4034 Thur, 4/27-5/18 5:30-6:30 pm

Annual Fishing Derby

JCPRC and the Izaak Walton League of Jefferson County will be sponsoring this free event for youth at the Izaak Walton Club in Leetown on Sat., June 3. This is an excellent opportunity for parents and grandparents to spend some quality, outdoor time with their children. The ponds will be fully stocked with various kinds of fish. Fishing will begin at 8:00 am. One pole may be used per child only. Door prizes, and awards in several categories will be given. **Space is limited to 125 so pre-registration is required.** Fishing poles and bait will not be provided.

In the event of inclement weather please call our cancellation line at (304)728-9044.

2-13 yrs / 1 day / Free Izaak Walton League
Program #4288 Sat, 6/3 8:00 -10:00 am

Water Wars

Come to Sam Michael's Park for a water battle like no other. Bring your own water blasters and get ready for fun! We'll provide water balloons. Please wear bathing suit and bring a towel.

6-10 yrs / 1 day / \$10
Sam Michael's Park—Mason Pavilion
Program #4294 Fri, 7/14 6:00 -8:00 pm



Cherry Blossom Odyssey Cruise

In Washington D.C.



Tuesday, April 4, 2017

8:45am-7:45pm

Cost: \$157.00

Program #4218

Enjoy entertainment and lunch on board the cruise, then go to the National Mall and take a walk around the Tidal Basin to view the Cherry Blossoms.

SPRINGFEST IN OCEAN CITY, MD



Saturday, May 6

Program #4083

Cost: \$84/seat

Sand, sun, fries with vinegar, cotton candy, seafood, swimming in the ocean, and don't forget the arts and crafts... Boy! What a day you will have. Bring your family and friends for a day of fun you won't forget.

1 day Bus Trip to SpringFest!

New York City

Your Way



Spring is an excellent time to tour, shop, go to a theater, or take a boat ride. You will make your own itinerary for the day.

There is always something new to see and do. For your convenience, we will be making a food and restroom stop going to and from New York City.

Saturday, April 22

Program #4082

Cost: \$84/seat



Saturday, June 17

Cost: \$152 per seat

includes theater ticket, lunch at Hershey Farms and round-trip bus transportation.

Program #4084

Inspirational and uplifting, Jonah is entirely entertaining. Sight and Sound brings the action front and center to each guest. Enjoy a show with live animals, state of the art sound and lighting, brilliant acting & costumes.

This is a 1-day bus trip to Lancaster, Pennsylvania.

Inner Harbor - Baltimore, MD



Treat yourself to a waterfront treasure along the shores of the Chesapeake Bay. Enjoy the many shops, boutiques, and open air stalls you find there. Dine at one of the many superb eating establishments. Visit the National Aquarium, the Maryland Science Center, Little Italy, or take a ride on the Water Taxi. Plan the day. Minors must be accompanied by an adult. Bus will pick up at the Food Lion in Charles Town. Bus will depart at 9:00 am and return at 7:30 pm.

Saturday, July 22
Program #4455

Cost: \$52 13 & up, \$42 12 & under



Saturday, September 30
Program #4454 **Cost: \$161**



In historic Durbin, you have the opportunity to board and experience the sights and sounds of one of the rarest steam locomotives in existence -- Durbin Rocket, one of only three operating Climax geared logging locomotives on earth. Then board the Cheat Mountain Salamander for a ride into the high country spruce forests of the legendary Cheat Mountains. Enjoy a buffet lunch on the train and don't be surprised if you see a bear, bobcat, fox or other wild animals. There will be dinner at one of the local restaurants at the end of your ride. Cost includes 2 train rides, lunch and dinner. Minors must be accompanied by an adult.

Girl Friend Get Together

Men welcome too!

WEDNESDAY, June 21

Pick up your coupons and free shopping bag and spend some time shopping at Potomac Mills Mall. After lunch (on your own) we will venture to the quaint town of Historic Occoquan for a wine cruise along the Occoquan River. Take in the beautiful scenery as you float along. Continue the day shopping in the boutique stores in the area. The day ends with a nice dinner at a local restaurant.

BUS, WINE CRUISE and DINNER INCLUDED

Program #4461

Cost: \$99

Bus will leave Charles Town at 8:15am and return at 8:00 pm



Jefferson County Parks and Recreation

SUMMER DAY CAMP

Sam Michael's Park
Wright Denny Intermediate
Shepherdstown Elementary
Blue Ridge Primary

Ages 5-14

Sam Michael's Park
Program #4231

7:30am-5:30pm Mon-Fri
1 field trip each week!
Water Day Friday w/Water Slide
\$129.00/week

Shepherdstown Elementary
Program #4240

8:00am-4:00pm Mon-Fri
Swimming at Lambert Park pool once each week
\$99.00/week

Wright Denny Intermediate
Program #4223

8:00am-4:00pm Mon-Fri
Swimming at Jefferson Memorial Park pool twice each week
\$99.00/week

Blue Ridge Primary
Program #4248

8:00am-4:00pm Mon-Fri
\$85.00/week

Scholarships are available for some programs.
Please contact Brenda at: 304-728-3207
or email: bwhittington@jcprc.org

Adult & Teen Activities

Parent & Child Crochet

Learn a new craft with your child this summer. Students age 13 to adult may attend alone. Children ages 8 – 12 must be accompanied by an adult. Basic Crochet stitch technique will be introduced in this class and students will receive yarn and a pattern for a small project. **There will be a supply fee of \$12 for each student which includes a tote bag, knitting needles, two types of yarn and assorted instruction sheets.** If you would like to contact the instructor prior to class to discuss your needs, please call 304-725-3172 (before 7 p.m. please).

All ages / 4 wks / \$30 Instructor Judy Slusher
Wright Denny Intermediate—Library
Program #4336 Tue, 7/11-8/1 10:00 am-12:00 pm

Parent & Child Knitting

Learn a new craft with your child this summer. Students age 13 to adult may attend alone. Children ages 8 – 12 must be accompanied by an adult. The basic Knit, Purl, Cast on, and Bind off techniques will be introduced in this class and students will receive yarn and a pattern for a small project. **There will be a supply fee of \$14 for each student which includes a tote bag, knitting needles, two types of yarn and assorted instruction sheets.**

If you would like to contact the instructor prior to class to discuss your needs, please call 304-725-3172 (before 7 p.m. please).

All ages / 4 wks / \$30
Wright Denny Intermediate—Library
Instructor Judy Slusher
Program #4341 Tue, 6/6-6/27
10:00 am-12:00 pm

Complete your Own Knit/Crochet Project

This class is designed for students who know the basic knit or crochet stitches and would like to learn new techniques, need help in understanding a pattern or completing a project. Instructor will provide individualized attention while you refresh skills or learn new ones. If you would like to learn either Knit or Crochet and the class schedules for those classes do not work for you, please call the instructor at the following phone number to discuss your needs. Assorted patterns will be available. Please bring a project to work on or call 304-725-3172 (before 7 p.m. please) prior to class with any project ideas or questions.

14 yrs & up / 4 wks / \$30
Wright Denny Intermediate—Library
Instructor Judy Slusher
Program #4337 Mon, 6/5-6/26
10:00 am-12:00 pm
Program #4338 Mon, 7/10-7/31
10:00 am-12:00 pm

Body Business

This is a full-body workout with choreographed dance routines, floor work, and stretching.

18 & up / 11 wks / \$55
Shepherdstown Elementary School
Instructor Sandra Watkins
Program #4342 Mon & Wed, 6/12-8/23
5:30-6:30 pm

Boot Camp

Burn fat & gain muscle, tone and strengthen your core all in one hour!! We start with 40 minutes of boot camp—this consists of a mixture of cardio segments, strength training segments, and calisthenics. Plus a few, fun surprises to burn fat and motivate you. We will end with 20 minutes of Pilates core work that will target your abs, back, hips, and glutes. Beginner to Advanced variations will be taught. ****DAYCARE AVAILABLE, BUT NOT GUARANTEED FOR THOSE WHO PRE-REGISTER.**

Please see day care guidelines.

18 yrs and up / 8 wks / \$128 Instructor Teresa Cantrell
Jefferson County Community Center
Program #4330 Tues & Thur, 6/6-7/27 9:30-10:30 am
Program #4331 Tues & Thur, 8/1-9/21 9:30-10:30 am

18 yrs and up / 8 wks / \$70 Instructor Teresa Cantrell
Jefferson County Community Center
Program #4332 Tues, 6/6-7/25 9:30-10:30 am
Program #4333 Tues, 8/1-9/19 9:30-10:30 am

18 yrs and up / 8 wks / \$70 Instructor Teresa Cantrell
Jefferson County Community Center
Program #4334 Thur, 6/8-7/27 9:30-10:30 am
Program #4335 Thur, 8/3-9/21 9:30-10:30 am

Guidelines for Childcare:

- **Childcare is available only for the first 15 children.**
- **No guarantee is made that childcare is available each class. Please call in advance for daily availability.**
- **Participants MUST pre-register in order to take advantage of childcare.**
- **Childcare is FREE for the first 2 children a participant has.**
- **The participant must pay \$5 for the 3rd and 4th child each (not to exceed 4 children). This fee must be paid each time they bring more than 2 children. Fee is payable at the front desk before your class begins.**

Couch to 5K

Have you ever thought about running a 5K? Stop thinking about it, get out there and do it! This class will get you up off the couch and moving. Our instructor will help you make running fun while teaching you techniques to build endurance and strength. At the end of the class, you will be given an opportunity to participate in a 5K with your running group. (Race fee is not included in the cost of the class) Children are welcome to register for this class if accompanied by a responsible, registered adult.

12 yrs and up / 8 wks / \$35
Instructor Jessica Tubergen
Jefferson County Community Center
Program #4360 Mon/Wed, 5/8-7/12
6:30-7:30 pm
(no class 5/29, 7/3)

Fitness with Suzanne

Fall Fitness with Suzanne will begin Monday 9/11/17

Trimnastics

A class to increase your strength and flexibility while trimming and toning the body with floor exercises that will help maintain or gain a fitness level for a healthier you! *Bring an exercise mat and hand weights to each class.*

18 yrs and up / 8 wks / \$60 Instructor Suzanne Dillow
Ranson Elementary
Program #4343 Mon/Wed/Fri, 5/22-7/14
5:45-6:35 pm
Program #4344 Mon/Wed/Fri, 7/17-9/8
5:45-6:35 pm

18 yrs and up / 8 wks / \$60 Instructor Suzanne Dillow
Zion Church 215 E. Washington St., Charles Town
Program #4345 Mon/Wed/Fri, 5/22-7/14
9:00-10:00 am
Program #4346 Mon/Wed/Fri, 7/17-9/8
9:00-10:00 am

Fit N Trim

A class to get you back into exercise with a low impact workout to help strengthen, tone and improve flexibility and a 10 minute cardio for a total body workout. *Bring an exercise mat and hand weights to each class.*

18 yrs and up / 8 wks / \$55 Instructor Suzanne Dillow
Bolivar Community Center
Program #4349 Tues/Thur, 5/23-7/13
12:00-1:00 pm
Program #4350 Tues/Thur, 7/18-9/7
12:00-1:00 pm

Strengthen & Tone

This low impact class will give you a total body workout to help strengthen, tone and improve flexibility & balance for a healthier you! *Bring an exercise mat and hand weights to each class.*

18 yrs and up / 8 wks / \$60 Instructor Suzanne Dillow
Zion Church 215 E. Washington St., Charles Town
Program #4347 Tues/Thur, 5/23-7/13
10:00-10:50 am
Program #4348 Tues/Thur, 7/18-9/7
10:00-10:50 am

Cardio Mix

Class offers a mix of mid to high level workouts including step, aerobics, or interval training. There will also be 20 minutes of core training, total body toning and stretching. *Bring an exercise mat and hand weights to each class.*

18 yrs and up / 8 wks / \$47 Instructor Suzanne Dillow
Ranson Elementary
Program #4351 Mon/Wed, 5/22-7/12
6:40-7:30 pm
Program #4352 Mon/Wed, 7/17-9/6
6:40-7:30 pm

Total Fitness

Get your total body workout in one class! This class (approximately 75 minutes) will include a cardio workout, exercises to strengthen and tone the body using hand weights, bands, and exercise ball (optional). Relax at the end of the class with simplified yoga/pilates movements to help achieve a full range of body motion for a healthier you. *Bring an exercise mat and hand weights to each class.*

18 yrs and up / 8 wks / \$45
Instructor Suzanne Dillow
Ranson Elementary School
Program #4353 Sat, 5/27-7/15
8:30-9:45 am
Program #4354 Sat, 7/22-9/9
8:30-9:45 am

30-30-30

This 90 minute class targets a total body workout - combining a warm up, cardio workout, exercises to strengthen and tone the body, and stretching. Join us anytime during the 90 minute class for your workout.

Bring an exercise mat and hand weights to each class.

18 yrs and up / 8 wks / \$65 Instructor Suzanne Dillow
Blue Ridge Elementary School
Program #4355 Tues/Thur, 5/23-7/13
4:30-6:00 pm
Program #4356 Tues/Thur, 7/18-9/7
4:30-6:00 pm

Summer Fitness Pass

Purchase a summer fitness pass for Summer fitness classes instructed by Suzanne Dillow. Participants must present their receipt when taking a class using the fitness pass.

Program #4357	8 wks	5/22-7/15	\$80
Program #4358	8 wks	7/17-9/9	\$80
Program #4359	16 wks	5/22-9/9	\$135

Adult Martial Arts

Adult Self Defense

This class is paced for a cardio workout. Advanced students may be performing multiple techniques while a beginner is practicing one technique at the same pace. In this way, we train you safely while providing a challenging pace and thorough workout.

18 yrs & up / 6 wks / \$65 Jefferson County Community Center Program #4266
Sun, 6/25-8/6 (No class 7/2) 11:30 am-12:30 pm

En Plein Air Painting Workshop

Let the history and beauty of Peter Burr Farm inspire you. Paint gardens, flowering trees, open landscape and more. We will delve deeper into the aspects of plein-air painting with an Impressionistic flare. We'll work rain or shine. **A \$10 supply fee (cash or check) is due to instructor on first day of the workshop.**

18 yrs & up / 1 day / \$35

Peter Burr Farm

Instructor Jennifer Glymph

Program #4456 Fri, 6/30 3:00-7:00 pm



Knit or Crochet for Charity

If you knit, crochet, or do any other needlecrafts and would like to use your time and talents to donate handmade items to local charities, this group will give you the opportunity to enjoy an afternoon of needlework while doing just that. Please bring your own knitting needles/crochet hooks/yarn/ supplies to class. The only cost to you is your time, talents, and whatever yarn you can provide. There will be a variety of knit and crochet patterns and project ideas available. There may also be some donated yarn available at class. If you would like to speak with the facilitator prior to class please call 304-725-3172 (before 7 p.m. please).

Please Note: Some guidance will be provided but this class is not an instructional class.

14 yrs & up / 4 wks / FREE

Wright Denny Intermediate—Library

Instructor Judy Slusher

Program #4339 Tues, 6/20 12:30-2:00 pm

Program #4340 Tues, 8/1 12:30-2:00 pm

Easy and Engaging Environmental Education For Early Childhood

In this training for early childhood educators, we'll examine the benefits of environmental education on academic achievement, social emotional development, and overall mental and physical health, and then explore ways to incorporate environmental education into your existing classroom schedule. Included in this training will be a comprehensive overview of the Ranson Old Town Community Garden's Budding Botanist Preschool Curriculum. We'll include time for group discussion, brainstorming, and individual planning so that all participants walk away inspired and ready to take action.

18 yrs & up / 1 day / \$25

Jefferson County Community Center

Instructor Emma Huvos

Program #4459

Sat, 5/20

8:00 am-12:00 pm



100 MILES in 100 DAYS!

Challenge

Jefferson County Parks and Recreation brings you Walk 100 Miles in 100 Days®. The goal of this 15-week program is to motivate you to get active by encouraging you to walk at least 1 mile everyday for 100 days.

Record at least 100 miles and turn in log form at the end of the program for a JCPRC Fitness Punch Pass and t-shirt (\$10 t-shirt fee). Other forms of cardiovascular (aerobic) exercise are encouraged: 20 minutes of aerobic exercise equals 1 mile. **New this year, NO MAX on miles that can be tracked. How far can you go?**

Track of your miles on the log form and turn in at the end of the program. It's as simple as that!

Forms can also be picked up and returned to: The Jefferson County Community Center

Or, you can download your own on our website: www.jcprc.org

Program #4462 to register FREE

Program #4463 to register and receive a t-shirt!

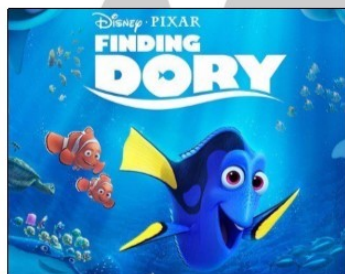
Register at www.jcprc.org or call our office at 304-728-3207

Movie Night

**FREE
Admission!**
Thanks to the generosity
of our Sponsors!

At the Park!

Fun for the whole family



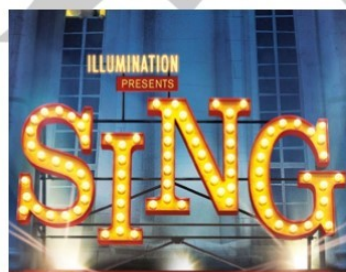
May 19, 2017
"Finding Dory"
Sponsored by BCT



June 2, 2017
"Moana"
Blue Ridge Primary



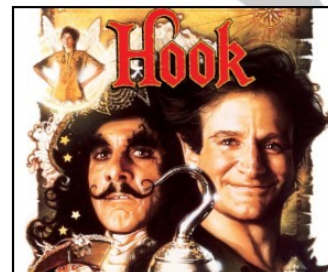
June 16, 2017
"Secret Life of Pets"
Sponsored by Chick-fil-a



July 1, 2017
"Sing"
Sam Michael's Park after Fireworks
Sponsored by Matt Harvey



July 21, 2017
"Lego Batman"
Jefferson Memorial Park, Charles Town



August 18, 2017
"Hook"

FREE ADMISSION!

Please support our concession stand at the movie events.
The proceeds help us bring fun, family events to our Parks!

Bring your chairs and blankets and join us in the park. All movies begin at sundown.
(The time the sunsets varies as the summer progresses—They usually begin between 8:45-9:30)

Day Camps for Little Ones

Curious George Camp

Let's go on an adventure of investigations and discoveries with this curious monkey and the man in the yellow hat! Each day, we will be reading a story and then doing crafts, experiments, and movement activities that relate to that day's story.

3-5 yrs / 1 wk / \$69 Instructor Stacey Earl

Jefferson County Community Center

Program #4384 Mon-Fri, 6/5-6/9 9:00am-12:00pm

Dr. Seuss Camp

Dr. Seuss is on the Loose! From *Cat in the Hat* to *Green Eggs and Ham* even Horton will bring a 'Who' if he can! We'll have so much fun with paint and glue; come along and see what you can do!

3-6 yrs / 1 wk / \$69 Instructor Stacey Earl

Jefferson County Community Center

Program #4382 Mon-Fri, 6/12-6/16 9:00am-12:00 pm

Pirate Treasure Camp

Ahoy Mate! Climb on board, as we become pirates with fun books, costume making, pirate maps, and even go on treasure hunts outside.

3-5 yrs / 1 wk / \$69 Instructor Stacey Earl

Jefferson County Community Center

Program #4385 Mon-Fri, 6/5-6/9 1:00-4:00 pm

Pete the Cat Camp

Pete the Cat loves his groovy shoes almost as much as kids love Pete the Cat! Join Ms. Stacey for this fun, crafty and musical, story filled camp!

4-8 yrs / 1 wk / \$69 Instructor Stacey Earl

Jefferson County Community Center

Program #4380 Mon-Fri, 8/7-8/11

1:00-4:00 pm

Star Wars Camp

Let the force be with you. Children will have fun with Star Wars themed crafts and games throughout the week.

4-8 yrs / 1 wk / \$69 Instructor Stacey Earl

Jefferson County Community Center

Program #4378 Mon-Fri, 7/31-8/4 9:00am-12:00pm

Preschool Science Camp

Children will have a fun-filled week with many STEM (Science, technology, engineering, math) activities.

4-6 yrs / 1 wk / \$69 Instructor Stacey Earl

Jefferson County Community Center

Program #4381 Mon-Fri, 7/10-7/14 9:00am-12:00pm

Paw Patrol Camp

Join the fun with Chase, Ryder, Marshall, Rubble, Skye, Rocky, and Everest. Your little ones will have a blast discovering a new hero each day.

3-6 yrs / 1 wk / \$69 Instructor Stacey Earl

Jefferson County Community Center

Program #4379 Mon-Fri, 7/24-7/28 9:00am-12:00pm

Wonderful World of Disney Camp

Join us as we explore the wonderful world of Disney through books, movie, & crafts. Each day we will explore one of our favorite Disney books and create crafts, snacks and games that go along with the theme. On Friday, we will enjoy popcorn and watch a favorite Disney movie and have our own Disney Parade!

4-8 yrs / 1 wk / \$69 Instructor Stacey Earl

Jefferson County Community Center

Program #4383 Mon-Fri, 6/19-6/23 1:00-4:00 pm

Pinkalicious Camp

Join Pinkalicious and come along on many of her amazing adventures. Children will enjoy stories, crafts, and games. Campers can also dress up in their favorite princess attire.

4-8 yrs / 1 wk / \$69 Instructor Stacey Earl

Jefferson County Community Center

Program #4386 Mon-Fri, 7/24-7/28 1:00-4:00 pm

Fancy Nancy Camp

Have fun with stories, crafts, dressing up and so much more in this week long camp honoring this fabulous children's book character.

4-8 yrs / 1 wk / \$69 Instructor Stacey Earl

Jefferson County Community Center

Program #4387 Mon-Fri, 8/7-8/11 9:00am-12:00 pm

Super Hero Camp

Enjoy a week long camp dedicated to all things superhero. Children will have fun with crafts, games and activities. Come dressed up as your favorite superhero as many days as you like.

3-6 yrs / 1 wk / \$69 Instructor Stacey Earl

Jefferson County Community Center

Program #4388 Mon-Fri, 6/19-6/23 9:00 am-12:00 pm

Toddler Learning Camp

Introduce your toddler to the basics of the alphabet, numbers, colors and shapes through various crafts, stories and other activities. This is a great way to start your child in a preschool setting the fun way. Each camp will have a different theme, so you can sign up for one camp or both!

2-3 yrs / 3 days / \$45 Instructor Ms. Stacie Tandski

Jefferson County Community Center

All Toddler Learning Camps are 9:30-11:30 am

Program #4372 Mon/Wed/Fri, 6/12, 6/14, 6/16

Program #4373 Mon/Wed/Fri, 7/17, 7/19, 7/21

Program #4374 Mon/Wed/Fri, 8/7, 8/9, 8/11

2-3 yrs / 2 days / \$35 Instructor Ms. Stacie Tandski

Jefferson County Community Center

All Toddler Learning Camps are 9:30-11:30 am

Program #7325 Tue/Thur, 6/13 & 6/15

Program #7326 Tue/Thur, 7/18 & 7/20

Program #7327 Tue/Thur, 8/8 & 8/10

Children attending preschool camps must be potty trained or parent must stay on site.

** Due to allergy concerns, we will no longer provide a snack at Preschool Summer Camps. Please send a snack for your child each day!

Toddler Learning Time

Introduce your child to the basics of alphabet, numbers, colors and shapes through various crafts, stories and other activities. Our program is designed for children age one and a half to three years of age, and based on a commitment to offering children an educationally sound and happy preschool experience where they can learn about themselves and about the world around them. We know the preschool experience is a first and very important step in a long education process, and we will strive to make it as fun and educational as possible. Toddler Learning Time is a tuition based program and parents will be required to make monthly payments.

*First payment will be made on August 1st and will include (September's tuition as well as \$30 registration fee and \$30 materials fee).
Registration fee and materials fee are non-refundable.*

To obtain information and registration packet please email Stacie Tanski at standski@jeffersoncountywv.org

2 yrs / \$90 per month Instructor Stacie Tanski
Jefferson County Community Center
Mon/Wed/Fri 9:00 am-10:30 am

2 yrs / \$90 per month Instructor Stacie Tanski
Jefferson County Community Center
Mon/Wed/Fri 11:00 am-12:30 pm

16 mos. (must be mobile) / \$80 per month
(Children must be 16 mos. on or before September 1 to enroll)
Instructor Stacie Tanski
Jefferson County Community Center
Tue/Thur 9:00 am-10:30 am

3 yrs / \$80 per month Instructor Stacie Tanski
Jefferson County Community Center
Tue/Thur 11:00 am-12:30 pm



Play and Learn Preschool

Play & Learn Preschool's mission is to provide children ages 3-5 with a well-rounded program in a positive, safe, and supportive environment. Our mission is achieved by a professional and dedicated staff that will guide your child through a variety of meaningful and interesting experiences, which will help to develop your child's cognitive, social, and physical skills through appropriate activities. Your child will have fun learning through play.

Learning Outcomes include:

- Enhance self esteem & individuality
- Build friendships
- Develop respect & promote teamwork
- Encourage reading readiness
- Strengthen listening & speaking skills
- Provide opportunities for self-expression
- Learn to get along with & respect others
- Encourage creativity

Children must be fully toilet trained prior to the first day of class. Use of disposable undergarments are not permitted.

*First payment will be made on August 1st and will include (September's tuition as well as \$50 registration fee and \$50 materials fee).
Registration fee and materials fee are non-refundable.*

To obtain information and registration packet please email Holly Junkin at hjunkin@jeffersoncountywv.org

4-5 yrs / \$180 per month Instructor Holly Junkin
Jefferson County Community Center
Mon/Wed/Fri 9:00 am-11:30 am

4-5 yrs / \$180 per month Instructor Holly Junkin
Jefferson County Community Center
Mon/Wed/Fri 1:00 pm-3:30 pm

3-4 yrs / \$130 per month Instructor Holly Junkin
Jefferson County Community Center
Tue/Thur 9:00 am-11:30 am

3-4 yrs / \$130 per month Instructor Holly Junkin
Jefferson County Community Center
Tue/Thur 1:00 pm-3:30 pm

Fall Preschool Preview

A special "THANK YOU" to our sponsors,
the local businesses who help make the
Jefferson County Parks and Recreation
Commission programs a success!

Kid's Closet Connection
Jefferson County, WV



America's Top
Drawer Children's
Consignment Sale
304-279-7374 for more details

www.KidsCloset.biz

Shop, Sell, Volunteer



Our Customers Are The
COOLEST!
And The
WARMEST!

NEW Comfort System Being INSTALLED Here By
SHENANDOAH
Air Conditioning & Heating, Inc.
304-728-3531 • **SHENANDOAHAIR.COM**

Club Volleyball Tryouts begin in November



ShenandoahSurge.com

1.888.WVU.1DOC



**University
Healthcare**
Jefferson Medical Center

wvuniversityhealthcare.com

Charles Town Plumbing, Heating
& Air Conditioning L.L.C.

HVAC (304)724-1521	Plumbing (304)725-9751
-----------------------	---------------------------

PO Box 1164
Charles Town, WV 25414

Fax: 304-724-1522
ctownhvac@aol.com

GUY'S

BUICK - GMC TRUCKS

CHARLES TOWN - RANSON, WV

800-401-5459

 "CUSTOMER DRIVEN
SINCE 1967" 




**river
riders**

 **harpers ferry
CANOPY TOUR**

 **OUTDOOR
adventure camp**

riverriders.com



Allstate
You're in good hands.

Sandi Pool
Vendt Brothers Agency
Allstate Insurance Company

Cell 301-980-9711
Office 304-982-7175
sandipoole@allstate.com
Auto, Home, Life, Retirement

JCPRC nor any of its employees sponsor or endorse the information presented on the ads on this page, or any ad presented in this publication.

Jefferson County Parks & Recreation



If you would like to be a sponsor, please contact Terri Burhans at tburhans@jcprc.org or call 304-728-3207 for more information.



JCPRC nor any of its employees sponsor or endorse the information presented on the ads on this page, or any ad presented in this publication.

Jefferson County Parks & Recreation ~ 27 ~ Register for classes at: www.jcprc.org

Park & Facility Information

Park Shelter

Reservation Info:

Facility Use Permits are available at the Parks & Recreation Office, 235 Sam Michael's Lane, Shenandoah Junction, WV 25442

Reservations are taken beginning the first working day of January for the current year. They can be made between 8:30 a.m.-5 p.m. at the JCPRC Office.

Reservation fees and deposits vary depending on location. All pavilion fees, permit fees, and deposits are due at the time of reservation.

Shelters are available for public use, free of charge, on a first-come, first-serve basis if they are not already reserved.

Visit the JCPRC Website at www.jcprc.org for more information and current pricing.



Sam Michael's Park-

The entrance to this one hundred and thirty acre park is located on Job Corps Road, near Harpers Ferry. The private setting of this park offers the perfect place to host weddings, wedding receptions, and reunions and other family events. The well shaded **Mason Picnic Pavilion** offers an adjacent kitchen and restroom facility. The new **Veterans Memorial Pavilion** offers picnic tables, bathrooms and close proximity to the large playground area and Jefferson County Community Center. The sparse acreage lends well to community events such as concerts, dog shows, festivals, and more. Nestled within the park are little league fields, home of Jefferson County Parks and Recreation; Community Center, athletic fields, playgrounds, horseshoe pits, and a sand volleyball court.

Sam Michael's Park Wedding Venue -

Sam Michael's original home site, located in Sam Michael's Park, is a private, picturesque place available for weddings & receptions.

Leetown Park-

Located one mile East of Leetown, on off of old Leetown Pike, this ten-acre park has been a gathering for softball games since the 1970's. On the park grounds are lighted softball fields, tennis courts, a playground, **picnic pavilion**, horse shoe pits, concession stand and new renovated restroom facility. This park offers a great place to host your company's softball league or to simply relax and just play a pick-up game of baseball. Ball fields available for reservations.

South Jefferson Park-

Located on Route 1, between Summit Point and Middleway, this seventy-one acre park accommodates six baseball fields, tennis courts, concession stand, a playground, and basketball court. It's a great place to relax and spend a day in the park.

Moulton Park-

On the shore of the Shenandoah River, just North of the Bloomery Bridge, this half-mile of river frontage features camping and other recreational opportunities. The well-shaded, quiet hammock of foliage creates inviting habitat for squirrels, birds, and waterfowl. A public boat ramp gives access for fishing the Shenandoah River. Camping is restricted to permit only, please call the Jefferson County Parks and Recreation office at (304)-728-3207 for information.

Bolivar Nature Park-

Located on primrose alley, near Harpers Ferry, this 7-acre park is filled with plenty of botanical delights. A walking trail allows you to stroll through the park where you can relax on a bench and watch the deer graze. The newly updated gazebo and picnic tables are available for your convenience at the parks entrance.

Morgan's Grove Park-

With over twenty acres of shade trees, meadows, playgrounds, and spring-fed streams, this popular park serves as an idyllic site for community gatherings and events. A 1500 square foot covered **picnic pavilion** with a full kitchen and restroom facility offers the perfect place to host family events as well as corporate functions. Other features of the park include playground equipment, soccer fields, sand volleyball, horseshoe pits, and a 3/4 mile walking trail.

Mount Mission Park -

This picturesque three and one-half acre park is located on Mission Road, near Shannondale. Shaded by oak and maple trees, the **picnic pavilion**, complete with restroom and kitchen facilities, has played host to family reunions, weddings, and birthday parties. An old church on site, a newly renovated playground, new basketball hoop, horseshoe pits, sand volleyball and a baseball diamond make this park a convenient site for neighborhood get-togethers.

James Hite Park -

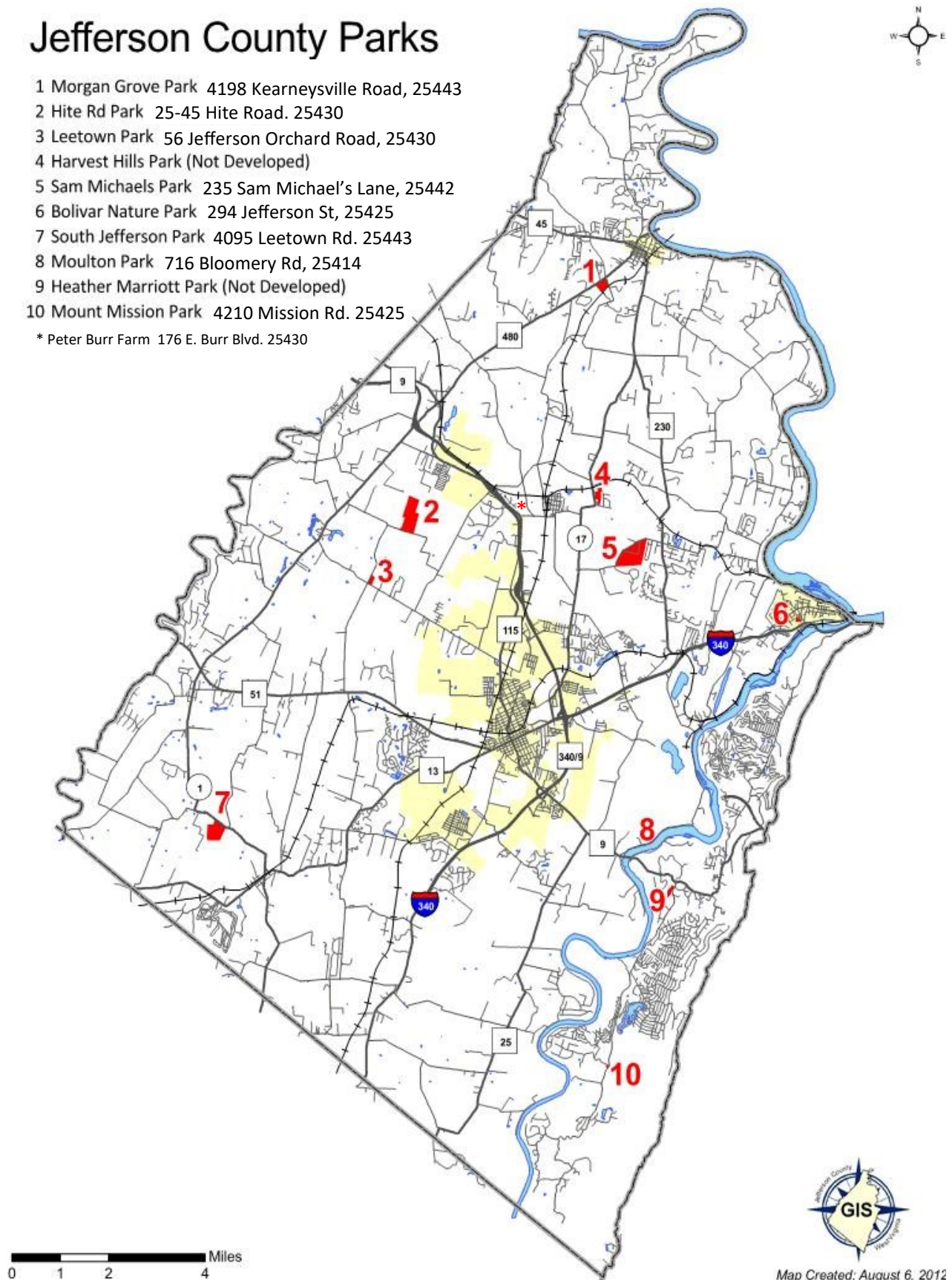
Our newest 119-acre park that includes a 2-mile walking trail, soccer and football fields. Future plans include picnic pavilions, playground, dog park and softball fields.

Peter Burr Farm -

The oldest wood frame structure in West Virginia, Peter Burr Farm is owned and maintained by the Jefferson County Historic Landmarks Commission. They offer events and workshops to the public periodically though out the year. More information can be found at: <http://www.jeffersoncountyhlc.org/>

Jefferson County Parks

- 1 Morgan Grove Park 4198 Kearneysville Road, 25443
 - 2 Hite Rd Park 25-45 Hite Road. 25430
 - 3 Leetown Park 56 Jefferson Orchard Road, 25430
 - 4 Harvest Hills Park (Not Developed)
 - 5 Sam Michaels Park 235 Sam Michael's Lane, 25442
 - 6 Bolivar Nature Park 294 Jefferson St, 25425
 - 7 South Jefferson Park 4095 Leetown Rd. 25443
 - 8 Moulton Park 716 Bloomery Rd, 25414
 - 9 Heather Marriott Park (Not Developed)
 - 10 Mount Mission Park 4210 Mission Rd. 25425
- * Peter Burr Farm 176 E. Burr Blvd. 25430



Payments & Fees:

Please make your check(s) payable to: **Jefferson County Parks & Recreation.**

A \$25 fee will be charged for all returned check and declined credit cards. Incomplete registrations cannot be processed—full payment must accompany registration.

A \$5 out-of-county fee will be charged to any person not living in Jefferson County.

A \$5 late fee will be charged if registration is received after the program starts. JCPRC is not responsible for lost, late, or misdirected mail.

Registration is for the program, not attendance—no make ups, refunds or credits will be offered for missed classes.

Age Policy:

Program participants must be the advertised age **before** the program starts.

Scholarships:

Scholarships are available for some programs. Contact Brenda at the JCPRC (304) 728-3207 or email bwhittington@jcprc.org.

Cancellation Policy:

Programs may be cancelled due to insufficient registration, school closings, or inclement weather. Call (304) 728-9044 in case of inclement weather.

Mark Your Calendar:

NO REMINDERS WILL BE SENT. You will only be notified if there is a problem processing your registration or if the class is cancelled.

Media/Photography:

The JCPRC reserves the right to take pictures at all events, activities, and programs. Pictures may be displayed in future commercials, brochures and web publications. Parents/children cannot take photos during classes without permission from the instructor and/or other parents of registered participants.

Attention Parents:

JCPRC instructors or staff are not responsible for your child prior to or after class time.

It is the responsibility of the parent/guardian to notify JCPRC staff of any medical conditions/special needs of a child prior to the start of class.

Discipline Policy:

The JCPRC has a discipline policy for recreation programs/facilities. In the event the participant is asked to leave a program/facility, no refund will be issued.

Trips Alcohol Policy:

We strive to have a family atmosphere on our trips. If you choose to drink while on our trips, please do so in a responsibly and make arrangements to have a designated driver for your trip home from the bus drop off area.

Refund Policy:

After initial registration, refund requests must be submitted in writing at least five working days prior to the start of the program and are subject to a \$10 service charge. No refunds or credit will be given less than five days prior to, or after the first day of the class or program—NO EXCEPTIONS. Monetary refunds will only be given due to the department's cancellation of a program. If insufficient registration causes a program to be cancelled, participants will receive a REFUND or CREDIT within one month of the program cancellation. For any program fee under \$20, no refunds will be processed, only credit to JCPRC accounts will be issued.

JCPRC Commission

The Jefferson County Parks and Recreation Commission meets at 7:00 pm every third Wednesday of each month, except August and December, at the Jefferson County Community Center, located at Sam Michael's Park. The JCPRC is always open to input from citizens in the community for ideas or programs that may be beneficial to the county. Call the JCPRC office at (304)728-3207 for more information or to request to be put on the agenda for an upcoming meeting.

Community Center - Daily Information

Facility Hours

Monday-Friday	8:00am-8:00pm
Office Hours (Monday-Friday)	8:00am-6:00pm
Saturday	10:00am-6:00pm
Sunday	12:00pm-6:00pm

Closures Observed:

Memorial Day - May 29	CLOSED
Independence Day - July 4	CLOSED
Labor Day - Sept. 4	CLOSED

In the event of inclement weather, the JCCC may open late or close early. Please call the cancellation line before driving out.	Cancellation line: (304) 728-9044
--	--------------------------------------

Facility Daily Fees

Age	Daily	20 visit Punch Pass	Yearly Pass
Youth (6-18 Years)	\$2.00	\$30.00	\$150.00
Adults (19-59 Years)	\$2.00	\$30.00	\$150.00
Senior Adults (60+)	\$1.00	\$15.00	\$100.00

JCCC Fees: Fees provide access to the fitness room, open gym and indoor walking track. Punch Passes have no expiration date. Memberships and Punch Passes cannot be used toward programs. Additional fees apply for indoor playground.

OOPS!

JCPRC staff has made every effort to prepare this activity guide as accurately as possible. However, errors can occur. Circumstances may require that adjustments be made to programs, fees, schedules, etc. JCPRC staff reserves the right to make any such adjustments. We apologize for any inconvenience these errors or adjustments may cause.

Registration is Easy! 5 EASY WAYS TO SIGN UP!



Online Registration

Go to www.jcprc.org
Pay with American Express,
Discover, VISA or MasterCard
anytime that's convenient for you!



Fax-In

304-728-9746
Fax form, including credit card
number, exp. date and 3 digit CSC.
Call to confirm receipt of fax. time
that's convenient for you!

Walk-in

Jefferson County Community Center
235 Sam Michael's Lane,
Shenandoah Junction, WV 25442
Monday thru Friday, 8am-6pm.



Phone-In

304-728-3207
Pay with American Express,
Discover, VISA or MasterCard,
Monday thru Friday, 8am -6pm.
Phone registration takes time.
Especially for new customers creating
a new account. Please be patient.
You can save time by registering online.



Mail-In

Fill out a registration form.
Mail it with payment to
235 Sam Michael's Lane,
Shenandoah Junction, WV 25442

PARENT					HOME	()
ADDRESS					WORK	()
CITY		STATE		ZIP		CELL ()
EMAIL	@					
ALLERGIES OR MEDICAL CONDITIONS: <small>List Participant and any allergies or medical conditions:</small>		EMERGENCY CONTACT: _____ <small>(not yourself—this person will be contacted IF we cannot reach the person listed above)</small>				
		RELATION: Parent Grandparent Aunt/Uncle Friend Neighbor Other: _____			Phone	() ()
PARTICIPANT NAME	DOB	PROGRAM #	CLASS TITLE		T-SHIRT SIZE <small>(if applicable)</small>	FEE
	/ /					\$
	/ /					\$
	/ /					\$
	/ /					\$
					TOTAL DUE	\$
PAYMENT OPTIONS		For Office Use		REQUIRED CSC CODE: _____		
Rec'd by _____ Date ____/____/____		Cash Check # _____ \$ _____ Other: _____				EX Date: ____/____/____
I/WE HAVE READ THE BELOW PARTICIPANT WAIVER AND RELEASE AND SIGN IT VOLUNTARILY:				Credit Card/Participant Waiver Authorization Signature: X _____		

We, the staff of the Jefferson County Parks and Recreation Commission (JCPRC), recognize our obligation to make our students and their parents fully aware of the inherent risks and hazards associated with sports & recreational activities that we offer. Students may suffer injuries, including, but not limited to minor injuries such as bruises and more serious injuries such as broken bones, dislocations, muscle pulls and stitches. There are many other risks of injury including catastrophic injuries such as permanent paralysis or even death from back, neck or head injuries which may arise due to participation in this activity. JCPRC insists that all students and their parents agree to abide by all of the safety rules and policies of JCPRC. JCPRC, its coaches, volunteers, instructors and staff members will not accept responsibility of injuries sustained by any participant while participating in our programs. I hereby consent to have my child participate in programs offered by the JCPRC. I have read the above information and am now fully aware of the hazards and risks associated and the distinct possibility of injuries that my child may suffer as a result of participation in the sport or activity. I realize it is not possible to specifically list each and every individual injury risk, and I voluntarily assume all the risks normally incident to the nature of the activities. It is hereby agreed that I, my executors, or other representatives waive and release all rights and claims for damages that I may have individually, or that my executors or other representatives may have on my behalf, or on behalf of my child, against JCPRC and/or Jefferson County Commission, their representatives, whether paid or volunteer, for any injuries or damages that my child sustain in connection with programs or other activities related to the JCPRC. I also understand that any injury incurred and the resulting medical expense from that injury will be my responsibility and JCPRC will not be responsible for payment of any related expenses. Furthermore, it is the responsibility of the parent/guardian to notify JCPRC staff of any medical conditions/special needs of a child prior to the start of class. JCPRC, instructors, and staff are not responsible for your child prior to or after class time. I acknowledge that I have read and fully understand the information on registration guidelines and the refund policy. I realize inherent risks could be involved in these programs. Therefore, I shall not hold the JCPRC, Jefferson County Commission or their employees liable for injuries that might occur during these supervised programs.



TRANSFORM YOUR SUMMER FROM ORDINARY TO EXTRAORDINARY!

July 31-August 4

9:00am-3:00pm

Ages 6-12

Wright Denny Intermediate

Program #4431

Cost: \$250



We are very excited to offer this NEW STEM camp opportunity! Kids will enjoy this fun and enriching camp where they will problem-solve, invent, explore and analyze. The critical thinking and communication skills that children gain through STEM enrichment at Camp Invention will serve them for a lifetime. These are the 21st-century skills that are essential for personal and professional success, now and in the future.

Register online
www.jcprc.org
 or call 304-728-3207



235 Sam Michael's Lane

Shenandoah Junction, WV 25442

Phone: (304) 728-3207 Fax: (304) 728-9746

Email: Info@jcprc.org Website: www.jcprc.org

Return Service Requested