

Jefferson County Parks & Recreation

Activity Guide

Summer 2018



A perfect place to grow...



www.jcprc.org

Neither the Jefferson County Board of Education nor any of its agents or employees sponsor or endorse this material or publication. The views expressed may or may not reflect those of the county or school administration and are neither approved nor disapproved by them.



Welcome!



What can I do at Parks & Rec?

1-3 years old

| | |
|----------------------|---------------------------------|
| Martial Arts Classes | Parent & Child Crochet/Knitting |
| Dance Classes | Movies in the Park |
| Gymnastics Classes | Paw Patrol Camp (3-6) |
| Swim Lessons (3-5) | Super Hero Camp (3-6) |
| Pony School (2.5-5) | Dr. Seuss Camp (3-6) |
| Bus Trips | Toddler Learning Camp (1-3) |

3-6 years old

| | |
|-------------------------------|---------------------------------|
| Nature Trail Explorers (5-10) | Bus Trips |
| Little Explorers (4-7) | Parent & Child Crochet/Knitting |
| Martial Arts Classes & Cam | Movies in the Park |
| Dance Classes & Camps | Paw Patrol Camp (3-6) |
| Gymnastics Classes & Camps | STEM Camp (4-8) |
| Swim Lessons | Storytime Favorites (4-8) |
| Amazing Athletes Camp (5-7) | Super Hero Camp (3-6) |
| All Sports Kinder Camp (3-4) | Star Wars Camp (4-8) |
| Animal Adventures Camp (4-12) | Dr. Seuss Camp (3-6) |
| Reptile Adventure Camp (4-12) | Disney Camp (4-8) |
| Pony School (2.5-5) | Pinkalicious Camp (4-8) |
| Learn to Ride (4-10) | Trolls Camp (4-8) |
| Fun with Food (5-8) | Fancy Nancy Camp (4-8) |
| Farm Camp (5-13) | Toddler Learning Camp (1-3) |

6-12 years old

| | |
|---------------------------------------|--------------------------------------|
| Explorer Camp (7-9) | Animal Adventures Camp (4-12) |
| Adventurer Camp (10-12) | Reptile Adventure Camp (4-12) |
| Outdoor Adventure Camp (9-14) | Junior Police Week (10-15) |
| Nature Trail Explorers (5-10) | Field Trip Camp (8-15) |
| Little Explorers (4-7) | LEGO Adventures Camp (7-12) |
| Make Your First Video Game! (8-14) | Youth Prep Fencing Class (6-8) |
| Code Breakers (8-10, 11-14) | Learn to Ride (4-10) |
| Minecraft Modders! (8-10, 11-14) | Quidditch Camp (7-12) |
| App Attack! (8-10, 11-14) | Fun with Food (5-8) |
| Camp Invention (6-11) | Farm Camp (5-13) |
| Martial Arts Classes & Camps | Color Guard Class (10 & up) |
| Dance Classes & Camps | Bus Trips |
| Gymnastics Classes & Camps | Parent & Child Crochet/Knitting |
| Swim Lessons | Movies in the Park |
| Amazing Athletes Camp (5-7) | Paw Patrol Camp (3-6) |
| Volleyball Prep Clinics (8-15) | STEM Camp (4-8) |
| Sports Express Camp (6-13) | Storytime Favorites (4-8) |
| Archery Camp (6-14) | Super Hero Camp (3-6) |
| Slam'n Jam'n Basketball Camp (6-13) | Star Wars Camp (4-8) |
| Nikki Teasley Basketball Camp (7-12) | Dr. Seuss Camp (3-6) |
| Flag Football Camp (7-10) | Wonderful World of Disney Camp (4-8) |
| Sandlot Baseball (9-14) | Pinkalicious Camp (4-8) |
| JCPRC Volleyball League (8-11, 12-14) | Trolls Camp (4-8) |
| Art Camps (6-12) | Fancy Nancy Camp (4-8) |

Teens & Adults

| | |
|-------------------------------------|---------------------------------------|
| Outdoor Adventure Camp (9-14) | Junior Police Week (10-15) |
| Make Your First Video Game! (11-14) | Field Trip Camp (8-15) |
| Code Breakers (11-14) | Farm Camp (5-13) |
| Minecraft Modders! (11-14) | Color Guard Class (10 & up) |
| App Attack! (11-14) | Bus Trips |
| Martial Arts (13-17) | Friday Night Cooking Series (16 & up) |
| Volleyball Prep Clinics (13-15) | Boot Camp (18 & up) |
| Sports Express Camp (6-13) | Zumba (13 & up) |
| Archery Camp (6-14) | Body Business (18 & up) |
| Slam'n Jam'n Basketball Camp (6-13) | Fitness with Suzanne (18 & up) |
| Sandlot Baseball (9-14) | Parent & Child Crochet/Knitting |
| JCPRC Volleyball League (12-14) | Knit/Crochet Classes (14 & up) |
| Men's Softball League (18 & up) | Sewing & Quilting (15 & up) |

Table of Contents

| | |
|-----------------------------------|-------------|
| Summer Day Camp..... | Page 3 |
| Outdoor Adventure & Ecology | Page 4 |
| STEM Camps..... | Page 5 |
| Martial Arts..... | Page 6 |
| Dance..... | Pages 7 |
| Gymnastics | Page 8 |
| Aquatics | Pages 9 |
| Sports & Leagues | Pages 10-12 |
| Special Events | Page 13 |
| Art | Pages 14-15 |
| Special Interests | Pages 16-17 |
| Bus Trips | 18 |
| Cooking | 19 |
| Teen & Adult..... | Pages 20-22 |
| Movie in the Park | Page 23 |
| Day Camps for Little Ones | Page 24 |
| Fall Preschool Preview..... | Page 25 |
| Thank You! | Page 26 |
| Facility Fees | Page 27 |
| Park Information | Page 28 |
| Park Map..... | Page 29 |
| Park & Program Policies | Page 30 |
| Enrollment Form | Page 31 |

Our Staff

| | |
|-------------------------|-----------------------|
| Jennifer Myers..... | Director |
| David Kling | Assistant Director |
| Tim Lykins | Park Manager |
| Brenda Whittington..... | Financial Coordinator |
| Becki Zaglifa..... | Public Relations |
| Terri Burhans | Community Development |
| Shane Hovatter..... | Park Maintenance |
| Joyce Moler | Office Assistant |
| Nicole Cooper..... | Office Assistant |
| Mary Reck | Office Assistant |

Jefferson County Parks and Recreation nor any of it's employees sponsor or endorse the information presented on this ad or any ad presented in this publication.

Jefferson County Parks & Recreation ~ 2 ~ Register for classes at: www.jcprc.org



Jefferson County Parks and Recreation

SUMMER DAY CAMP

Ages 5-14

Sam Michael's Park

Shepherdstown Elementary

Wright Denny Intermediate

Bolivar Community Center

**Save \$10
per week!**

Register before
April 15, 2018

Sam Michael's Park Program #5034

7:30am-5:30pm Mon-Fri
1 field trip each week!
Water Day Friday w/Water Slide
\$129.00/week

Week 1 - June 11-15

Movie Week
Regal Cinemas, Martinsburg

Week 2 - June 18-22

Secret Spy School Week
Winchester Discovery Museum

Week 3 - June 25-29

Celebrate Your Birthday Week
JayDees

Week 4 - July 9-13

Decades Week
Greenbriar State Park

Week 5 - July 16-20

Everything Giant Week
Winchester Discovery Museum

Week 6 - July 23-27

Stranger Things Week
Regal Cinemas, Martinsburg

Week 7 - July 30– August 3 Olympics Week

Frederick Keys Game, Frederick, MD
(All camps participate in field day.
Kids will ride a bus to Sam Michael's Park)

Week 8 - August 6-10

Beach Week
Greenbrier State Park

Shepherdstown Elementary Program #5035

8:00am-4:00pm Mon-Fri
Swimming at Lambert Park
pool once each week
\$99.00/week

Week 1 - June 11-15

Beach Week

Week 2 - June 18-22

Stranger Things Week

Week 3 - June 25-29

Movie Week

Week 4 - July 9-13

Secret Spy School Week

Week 5 - July 16-20

Decades Week

Week 6 - July 23-27

Everything Giant Week

Week 7 - July 30– August 3

Olympics Week

(All camps participate in field day.
Kids will ride a bus to Sam Michael's Park)

Movie week: activities, crafts & games based on a different movie each day. (Ex. Star Wars, Incredibles 2, Show Dogs)
Beach week: water games, beach towel games, beach ball games, beach crafts
Olympics week- crazy sports, team building games, Olympics day at Sam Michael's on Thursday, August 2nd.
Everything Giant week: We bring games like jenga, tic-tac-toe, yahtzee and more to life and in giant form.
Camping week: scavenger hunts, smores, trail mix, nature crafts, capture the flag and other fun camping games.
Secret Spy School week: Scavenger hunts, codes, mazes, walk the wire training, disguises, marshmallow shooters.
Stranger Things week: kids will make ooblek, slime & play dough. Alien crafts, moon rock hunt & astronaut training.
Celebrate Your Birthday week: Play fun birthday party games like pin the tail on the donkey, make a piñata, hot potato.
Decades week: 50's sock hop, 60's hippie day, 70's disco, 80's skateboards and pacman, future party.

Wright Denny Intermediate Program #5018

8:00am-4:00pm Mon-Fri
Swimming at Jefferson Memorial
Park pool twice each week
\$99.00/week

Week 1 - June 11-15

Everything Giant Week

Week 2 - June 18-22

Decades Week

Week 3 - June 25-29

Beach Week

Week 4 - July 9-13

Stranger Things Week

Week 5 - July 16-20

Movie Week

Week 6 - July 23-27

Camping Week

Week 7 - July 30– August 3

Olympics Week

(All camps participate in field day.
Kids will ride a bus to Sam Michael's Park)

Bolivar Community Center Program #5075

8:00am-4:00pm Mon-Fri
\$85.00/week

Week 1 - June 11-15

Camping Week

Week 2 - June 18-22

Celebrate Your Birthday Week

Week 3 - June 25-29

Everything Giant Week

Week 4 - July 9-13

Movie Week

Week 5 - July 16-20

Beach Week

Week 6 - July 23-27

Secret Spy School Week

Week 7 - July 30– August 3

Olympics Week

(All camps participate in field day.
Kids will ride a bus to Sam Michael's Park)

Registration: *Due to state law regulations we are required to limit the number of days a child is allowed to attend summer day camps, or any camp lasting more than 6 hrs. Children may only attend these camps for a maximum of 6 weeks (30 days) during the summer (consecutive or nonconsecutive). Full payment is due at time of registration. Parent must complete a 'camp registration' form as well as a 'health form' for each child they are registering.

Camp Enrollment Minimums: In order to maintain low costs for our camps despite an increase in costs and wages, we will be maintaining a minimum participant number in each camp. Camps/classes will be canceled if minimum numbers are not reached.

Lunch: Campers will need to bring their own lunch and beverage to camp every day. Refrigeration is not available. Small coolers or ice packs are recommended.

Dress: Children are encouraged to dress comfortably in shorts and t-shirt/camp shirt. Closed toe shoes are highly recommended. Camp T-shirts are required to be worn on field trips days.

Personal Belongings: Clearly mark all personal belongings (sunscreen, towels, lunches, backpacks, etc.) with the camper's first and last name. Please do not send valuables along with your child, including video games and Nintendo DS's. JCPRC is not responsible for lost or stolen items.

First Day Newsletter: On the first day of each camp session, your child will receive a newsletter containing specific information regarding daily activities for that week of camp. Please refer to the newsletter before coming to camp each day.

Explorer Camp

New this year! Kids ages 7, 8, and 9 will learn outdoor survival skills with having plenty of hands-on fun! We will learn how to build shelters, safely build fires, use a compass, go on a scavenger hunt, and play some games that will help you improve your survival know-how. Explorer camp runs **Monday through Thursday, 9 am to noon**. Please send sunscreen, bug spray, water and snack with your child each day. Campers will meet at the JCCC for drop off and pick up in the lobby.

7-9 yrs / 4 days / \$110
Jefferson County Community Center

Program #5093 Mon-Thur, 7/16-7/19 9:00am-12:00pm
Program #5094 Mon-Thur, 8/6-8/9 9:00am-12:00pm



Adventurer Camp

The "Adventurer" camp is designed for 10, 11, and 12-year olds. This camp dives deeper into the outdoor skills and offers campers the chance to sleep out under the stars at Sam Michael's Park. **This camp runs Tuesday and Wednesday from 1pm to 4pm. Thursday campers will arrive at 1pm and are invited to camp out at Sam Michael's Park.**

We will build shelters, safely build fires, use a compass to complete an orienteering course, and play some games to improve your survival know-how. We will provide dinner Thursday and breakfast the next morning.

Pick-up on Friday will be at 11:00 a.m. Please send sunscreen, bug spray, water and snack with your child each day. Campers will meet at the JCCC for drop off and pick up in the lobby area.

Campers will meet at the JCCC for drop off and pick up in the lobby.

10-12 yrs / 4 days / \$150
Jefferson County Community Center

Program #5095 Tue-Fri, 7/17-7/20 See times in the description
Program #5096 Tue-Fri, 8/7-8/10 See times in the description

Outdoor Adventure Camps

Outdoor adventure camp offers unforgettable outdoor experiences for adventure seeking kids 9-14, at River Riders in historical Harpers Ferry. Your child's weekly adventures will include white water rafting, kayaking, tubing, Aerial Adventure Park climbing and our eight zip line canopy tour! All activities are facilitated by River Riders' highly trained guides, who make it their goal to share their experience and passion for adventure and the outdoors with your child. Throughout the summer our adventure camps will provide your child with increased confidence, lifelong memories and lots of fun! River Riders is located at 408 Alstadts Hill Road, Harpers Ferry, WV 25425.

River Riders 9-14 yrs / 3 days / \$205
Program #5083 Wed-Fri, 6/13-6/15 8:30 am-4:00 pm

| | | |
|--------------------------------|---------------------------|------------------------|
| 9-14 yrs / 1 wk / \$299 | | |
| Program #5085 | Mon-Fri, 6/18-6/22 | 8:30 am-4:00 pm |
| Program #5086 | Mon-Fri, 6/25-6/29 | 8:30 am-4:00 pm |
| Program #5087 | Mon-Fri, 7/9-7/13 | 8:30 am-4:00 pm |
| Program #5088 | Mon-Fri, 7/16-7/20 | 8:30 am-4:00 pm |
| Program #5089 | Mon-Fri, 7/23-7/27 | 8:30 am-4:00 pm |
| Program #5090 | Mon-Fri, 7/30-8/3 | 8:30 am-4:00 pm |
| Program #5091 | Mon-Fri, 8/6-8/10 | 8:30 am-4:00 pm |
| Program #5092 | Mon-Fri, 8/13-8/17 | 8:30 am-4:00 pm |

Field Trip: Jay Dee's Water Park
 Field Trip: Adventure Park USA/Laser Tag
 Field Trip: Boonsboro Family Park/Paintball
 Field Trip: Jay Dee's Water Park
 Field Trip: Adventure Park USA/Laser Tag
 Field Trip: Boonsboro Family Park/Paintball
 Field Trip: Jay Dee's Water Park
 Field Trip: Adventure Park USA/Laser Tag

Nature Trail Explorers

Join the Eastern Panhandle Conservation District for a fun 4-days in our park, exploring the outdoors and our trail system. Your child will have fun identifying trees, plants and animals. Camp will also include other activities such as stories, crafts, coloring. Children will also get to build their very own forest. Camp will meet in the lobby of the community center each day and will then venture outdoors.

5-10 yrs / 4 days / \$15
Instructor ECPD - Heather Ishman
Sam Michael's Park
Program #5204 Mon-Thur, 7/23-7/26
9:00am-11:00am

Little Explorers

Enjoy a fun filled week of nature hikes, exploring the park grounds at Sam Michael's and catching nature at its finest. This week will include stories, games, crafts and other nature and ecology based activities. Children will be outside the majority of the camp. Please provide plenty of water and a packed snack.

4-7 yrs / 1 wk / \$35 Instructor Heidi Citro
Sam Michael's Park
Program #5205 Mon-Fri, 6/25-6/29 9:00-11:30 am
Program #5206 Mon-Fri, 7/9-7/13 9:00-11:30 am



Make Your First Video Game!

If you love playing video games, this is the camp for you! Make your first video game in this one-of-a-kind class that shows you the keys to designing your first 2D platformer game. Conceptualization, play experience, level design, graphics, sounds, and simple coding are just some of the concepts that we'll explore. No prior experience necessary, just a desire to have fun. Student created games will be available on a password protected Black Rocket website to share with friends and family. Games are only compatible on PC computers; Mac versions can be created after the program for \$15.00 conversion fee. Students will work in pairs or teams for most of the program. Returning students can create more advanced projects that build on previous years.

11-14 yrs / 1 wk / \$149

Wright Denny Intermediate – Computer Lab

Program #5196 Mon-Fri, 6/25-6/29 9:00 am-12:00 pm

8-10 yrs / 1 wk / \$149

Wright Denny Intermediate – Computer Lab

Program #5197 Mon-Fri, 6/25-6/29 1:00-4:00 pm



Minecraft Modders!

Use your favorite game to learn the basics of modding and foundations of programming. Learn scripting and logic statements as you create your first mods! Introductory coding will also be taught through a simulated environment inspired by Minecraft. Student projects will be available on a password protected Black Rocket website to share with friends and family. To access their project at home students must own a PC/MAC version of Minecraft. Tablet, phone, and game console versions of Minecraft are not compatible. Students will work in pairs or teams for most of the program. Returning students can create more advanced projects that build on previous years.

8-10 yrs / 1 wk / \$149

Wright Denny Intermediate – Computer Lab

Program #5200 Mon-Fri, 7/16-7/20 9:00 am-12:00 pm

11-14 yrs / 1 wk / \$149

Wright Denny Intermediate – Computer Lab

Program #5201 Mon-Fri, 7/16-7/20 1:00-4:00 pm



Code Breakers

Calling all future coders, programmers, & designers! Learn the basics of coding languages like HTML, JavaScript, and CSS through a series of web projects and design challenges each day and be on your way to becoming the next tech star! Whether you want to be the next Mark Zuckerberg or the high school student who just made \$1 million dollars for programming in his bedroom, this course has the essentials you need to begin your journey. Projects will be available on a Black Rocket website to share with friends and family. Students will work in pairs or teams for most of the program. Returning students can create more advanced projects that build on previous years.

11-14 yrs / 1 wk / \$149

Wright Denny Intermediate – Computer Lab

Program #5198 Mon-Fri, 7/9-7/13 9:00 am-12:00 pm

8-10 yrs / 1 wk / \$149

Wright Denny Intermediate – Computer Lab

Program #5199 Mon-Fri, 7/9-7/13 1:00-4:00 pm



App Attack!

Take the first steps into the world of mobile app design and customize your own game app! Using a specialized app & game development tool, students will explore the world of web-based (HTML5) mobile apps. In addition to learning the basics of mobile app design and game development, you will also see firsthand how the world of App publishing functions. Student-created apps will be accessible on a private site and can be played on any mobile device or computer. Publishing to App Stores not included. No prior experience is necessary and students do not need to own a smartphone or tablet to take the class. Students will work in pairs or teams for most of the program. Returning students can create more advanced projects that build on previous years.

11-14 yrs / 1 wk / \$149

Wright Denny Intermediate – Computer Lab

Program #5202 Mon-Fri, 7/23-7/27 9:00 am-12:00 pm

8-10 yrs / 1 wk / \$149

Wright Denny Intermediate – Computer Lab

Program #5203 Mon-Fri, 7/23-7/27 1:00-4:00 pm



Camp Invention 2018

Camp Invention is a National Award Winning STEM camp returning to Jefferson County for a third year of imagination and creativity! Let's invent the future today! Fast Forward to Camp Invention's new 2018 program where campers will explore with fun, hands-on activities that encourage creative problem solving, teamwork, entrepreneurship, and curiosity. At the end of the program, each camper will bring home two personalized robots!

6-12 yrs / 1 wk / \$255

Wright Denny Intermediate - Cafeteria

Program #5195 Mon-Fri, 7/30-8/3 9:00 am-3:00 pm

Mommy & Me Karate

Bring an adult buddy to help you improve coordination and balance. This is a perfect opportunity to play and learn skills together. Wear loose fitting clothing, and be prepared to go barefoot.

1-5 yrs / 6 wks / \$49

Jefferson County Community Center

Program #4791 Sun, 5/20-7/15* 1:45-2:15 pm
Program #4792 Sun, 7/22-8/26 1:45-2:15 pm

Little Dragons

The classes will cover basic karate skills, balance, coordination, self control, respect and, most importantly, the children will have fun! Wear loose fitting clothing.

3-5 yrs / 6 wks / \$49

Jefferson County Community Center

Program #4799 Sun, 5/20-7/15* 2:30-3:00 pm
Program #4800 Sun, 7/22-8/26 2:30-3:00 pm

Little Ninjas

This is a traditional beginner karate course for youth ages 4-6. Participants will learn balance, coordination, respect, discipline, self-esteem, self-control, and more-- all while having fun!

4-6 yrs / 6 wks / \$55

Jefferson County Community Center

Program #4803 Sun, 5/20-7/15* 3:15-3:45 pm
Program #4804 Sun, 7/22-8/26 3:15-3:45 pm

Ninjas

Are you a beginner-intermediate level participant or an experienced belt holder? Come out and join our traditional karate class. Develop or hone your karate skills while you gain balance, control, coordination, strength, and flexibility. **Optional belt testing with our Instructor is available! Please see your instructor for more details.**

7 yrs & up / 6 wks / \$65

Jefferson County Community Center

Program #4807 Sun, 5/20-7/15* 4:00-5:00 pm
Program #4808 Sun, 7/22-8/26 4:00-5:00 pm

Advanced Ninjas

For advanced students who are interested in learning more self-defense and testing for belts. Previous training is required for this class whether it has been through parks and recreation or from another instructor.

All students with previous experience are welcome.

7 yrs & up / 6 wks / \$65

Jefferson County Community Center

Program #4811 Sun, 5/20-7/15* 5:15-6:15 pm
Program #4812 Sun, 7/22-8/26 5:15-6:15 pm

Teen Ninjas

Are you a beginner-intermediate level participant or an experienced belt holder? This class is a continuation of Ninja class for more advanced students. Develop or hone your karate skills while you gain balance, control, coordination, strength, and flexibility. **Optional belt testing with our Instructor is available! Please see your instructor for more details.**

13-17 yrs / 6 wks / \$65

Jefferson County Community Center

Program #4815 Sun, 5/20-7/15* 6:30-7:30 pm
Program #4816 Sun, 7/22-8/26 6:30-7:30 pm

Homeschool Karate

Gain confidence and discipline while learning the basics of martial arts in a friendly and warm atmosphere.

6-12 yrs / 6 wks / \$59

Jefferson County Community Center

Program #4787 Sun, 5/20-7/15* 12:45-1:30 pm
Program #4788 Sun, 7/22-8/26 12:45-1:30 pm



Karate Camp

Learn new skills, make new friends and have hours of fun in a safe, controlled environment. This camp is a great way for a beginner to build basic martial arts skills or for the experienced martial artist to improve on their skills. Camps include but are not limited to agility exercises and drills to build strength, endurance and coordination. Gain life-skills, problem solving, conflict resolution, respect, discipline and confidence. Hours of fun are spent playing small sided games that will challenge your kids mentally and physically.

4-7 yrs / 1 wk / \$77 Instructor Chelsy Erickson

Jefferson County Community Center

Program #5207 Mon-Fri, 7/9-7/13 1:00-4:00 pm
Program #5208 Mon-Fri, 8/6-8/10 1:00-4:00 pm

7-12 yrs / 1 wk / \$77 Instructor Chelsy Erickson

Jefferson County Community Center

Program #5209 Mon-Fri, 6/11-6/15 1:00-4:00 pm
Program #5210 Mon-Fri, 7/30-8/3 1:00-4:00 pm

All Classes are taught by Ms. Chelsy Erickson.

Kids should wear comfortable clothes, and be prepared to go barefoot.

Belt testing is available.

Please ask Ms. Chelsy for more information.

**** Please note: Martial Arts classes
will NOT be held on 5/27, 6/17, 7/1!****

Pre-Ballet 1

Join the Royal Stars dance at Jefferson County Parks & Recreation and learn the fundamental steps of ballet. All students are asked to wear pink tights, pink shoes and pink leotard. Hair should be pinned in bun or out of face. Class size is limited to 10 children.

5-7 yrs / 6 wks / \$60 Instructor Cara Patterson
Jefferson County Community Center
Program #4751 Sun, 5/20-7/15* 5:30-6:30 pm
Program #4752 Sun, 7/22-8/26 5:30-6:30 pm

Ballet 1

Designed for students who have graduated from at least one year of pre-ballet at Royal Stars or transferring from other school. Students will learn the fundamentals of a ballet barre and center steps. Class is limited to 10 students. Those who have earned a blue star or above in previous classes at Royal Star may wear royal blue leotard, all others should wear a black leotard. All students wear pink tights, pink shoes. No skirts, hair in bun or pinned out of face.

6 yrs & up / 6 wks / \$55 Instructor Cara Patterson
Jefferson County Community Center
Program #4730 Sun, 5/20-7/15* 4:20-5:20 pm
Program #4731 Sun, 7/22-8/26 4:20-5:20 pm

Hip Hop

Hip hop, a fast and upbeat form of urban dance elements will be incorporated into this class. Students should wear comfortable clothing and jazz shoes or sneakers for class.

7 yrs and up / 6 wks / \$55 Instructor Cara Patterson
Jefferson County Community Center
Program #4739 Sun, 5/20-7/15* 2:00-3:00 pm
Program #4740 Sun, 7/22-8/26 2:00-3:00 pm

Dance Summer Camp

Beginner Ballet/Tap Workshop

Your child will enjoy this introductory workshop to ballet and tap. Learn the basic fundamentals of these styles of dance. Tap shoes are not required.

4-8 yrs / 1 wk / \$60 Instructor Mikaela Petersen
Jefferson County Community Center
Program #5121 Mon-Fri, 7/9-7/13
9:00am-12:00pm

Intermediate Ballet/Tap Workshop

Your child will enjoy this introductory workshop to ballet and tap. Learn the basic fundamentals of these styles of dance. Tap shoes are not required. Children should have some knowledge and experience in Tap before taking this camp. But an emphasis will be placed on brushing up on basics as well as learning new steps.

6-12 yrs / 1 wk / \$60 Instructor Mikaela Petersen
Jefferson County Community Center
Program #5122 Mon-Fri, 7/9-7/13
1:00-4:00pm

Jazz

This class combines the basics of ballet along with teaching rhythm and coordination. The students will grow to love the fine art of ballet. Pink leotard and ballet slippers are recommended.

7 yrs & up / 6 wks / \$55 Instructor Cara Patterson
Jefferson County Community Center
Program #4743 Sun, 5/20-7/15* 3:10-4:10 pm
Program #4744 Sun, 7/22-8/26 3:10-4:10 pm

Dance Express

This class is a great way for beginner dancers to have the opportunity to try many types of dance. Each class will begin with a quick warm-up stretch. Classes will be dedicated to introducing a different style of dance. Some of the styles included but not limited to are...ballet, jazz, hip hop and lyrical. On the last week of class, parents will have the opportunity to see what the children have learn with a small performance.

5-8 yrs / 6 wks / \$55 Instructor Cara Patterson
Jefferson County Community Center
Program #4747 Sun, 5/20-7/15 12:50-1:50 pm
Program #4748 Sun, 7/22-8/26* 12:50-1:50 pm

**** Please note: Dance classes
 will NOT be held on 5/27, 6/17, 7/1!****



Princess Dance Camp

Your child will enjoy this week-long princess themed camp filled with dance, songs, crafts and stories. Each day your child will explore a new princess. On the last day, a short dance will be performed for the parents. Dancers should come in comfortable attire with hair pulled away from their face. Dance clothes and ballet shoes are recommended. No previous dance experience necessary.

4-12 yrs / 1 wk / \$70 Instructor Mikaela Petersen
Jefferson County Community Center
Program #5123 Mon-Fri, 7/23-7/27
9:00am-12:00pm

Little Stars Dance Camp

This camp is designed to be fun and will help your child's flexibility and hand-eye coordination. The camp may include an introduction to ballet, tap, and jazz movement. Children will also have a chance to play, make craft projects and more!

3-5 yrs / 1wk / \$60 Instructor Mikaela Petersen
Jefferson County Community Center
Program #5124 Mon-Fri, 7/23-7/27
1:00-3:00pm

Tumble Bugs

This 40 minute parent participation preschool gymnastic program is ideal for the beginner tumbler. This program focuses on developing your child's gymnastic and creative movement skills. Gymnasts will learn the basics of rolls, handstands and jumps all while developing their upper and lower body coordination, flexibility and strength. Walk on the beam and swing on the bars, this program is fun for both the child and the adult.

2-3yrs / 6 wks / \$52

Jefferson County Community Center

| | | |
|----------------------|------------------------|---------------------|
| Program #4757 | Sun, 5/20-7/15* | 1:00-1:40 pm |
| Program #4758 | Sun, 7/22-8/26 | 1:00-1:40 pm |

Tumble Bunnies

A fun and imaginative way to learn gymnastics basics. Our 45 minute beginner preschool gymnastic program is designed to introduce basic gymnastic skills to young children who have no gymnastic experience and to those who have not yet mastered basic gymnastic skills. Gymnasts will work on skills using the beam, bars and springboard. Gymnasts will learn forward and backward rolls, bridges, handstands and cartwheels. This introduction to basic gymnastics is both fun and rewarding as the gymnast discovers the many new ways that they can move.

3-4 yrs / 6 wks / \$63

Jefferson County Community Center

| | | |
|----------------------|------------------------|---------------------|
| Program #4763 | Sun, 5/20-7/15* | 2:00-2:45 pm |
| Program #4764 | Sun, 7/22-8/26 | 2:00-2:45 pm |

Tumble Bears

Our beginner program is designed to introduce basic gymnastic skills to young children who have no gymnastic experience and to those who have not yet mastered basic gymnastic skills. Gymnasts will work on skills using the beam, bars and springboard. Gymnasts will learn forward and backward rolls, bridges, handstands and cartwheels. This introduction to basic gymnastics is both fun and rewarding as the gymnast discovers the many new ways that they can move.

4-6 yrs / 6 wks / \$68

Jefferson County Community Center

| | | |
|----------------------|------------------------|---------------------|
| Program #4769 | Sun, 5/20-7/15* | 3:00-4:00 pm |
| Program #4770 | Sun, 7/22-8/26 | 3:00-4:00 pm |

Beginner Gymnastics

In this 60 minute program students will learn the proper fundamentals of gymnastics. Our fun filled weekly lesson plans will keep the students interested and excited about learning the basics of gymnastics. Gymnasts will work on skills using the beam, bars and springboard. Gymnasts will learn forward and backward rolls, bridges, handstands and cartwheels. This introduction to basic gymnastics is both fun and rewarding.

6-12 yrs / 6 wks / \$68

Jefferson County Community Center

| | | |
|----------------------|------------------------|---------------------|
| Program #4775 | Sun, 5/20-7/15* | 4:15-5:15 pm |
| Program #4776 | Sun, 7/22-8/26 | 4:15-5:15 pm |

Intermediate Gymnastics

This program is for gymnasts that have mastered basic positions and skills. The intermediate gymnastic level introduces the gymnast to skills on the high beam, handstand forward rolls, round offs, front walkovers and back walkovers. Gymnasts will also work on skills using the bars and springboard. Independent cartwheel required for this class.

6-14 yrs / 6 wks / \$68

Jefferson County Community Center

| | | |
|----------------------|------------------------|---------------------|
| Program #4781 | Sun, 5/20-7/15* | 5:30-6:30 pm |
| Program #4782 | Sun, 7/22-8/26 | 5:30-6:30 pm |

* Please note, there will be no gymnastics classes on 5/27, 6/17, 7/1

Gymnastics & Cheer Camps

Cheerleading Camp w/ Shepherd Rams

If your child is interested in becoming a cheerleader, this is a perfect opportunity to learn what the sport is all about! Our clinics, taught by Shepherd College Coach, Lindsey Bordovsky and her cheerleaders, incorporate the fundamentals of cheering- arm movements, jumps, dance, stunting, tumbling, and a variety of cheers and chants that incorporate these skills.

4-16 yrs / 1 wk / \$89 Jefferson County Community Center

Program #5125 Mon-Fri, 6/18-6/22 1:00-4:30 pm

Beginner Gymnastics Camp

Our fun filled lesson plans will keep the students interested and excited about learning the basics of gymnastics. This introduction to basic gymnastics is both fun and rewarding. Parents please provide snacks for your child, as we will be breaking daily for a snack.

4-8 yrs / 1 wk / \$80

Jefferson County Community Center

| | | |
|----------------------|---------------------------|-----------------------|
| Program #5126 | Mon-Fri, 6/25-6/29 | 9:00am-12:00pm |
| Program #5127 | Mon-Fri, 7/16-7/20 | 9:00am-12:00pm |

Intermediate Gymnastics Camp

Our fun filled lesson plans will keep the students interested and excited about learning gymnastics. Gymnasts will work on skills using the beam, bars and springboard. Other skills will include, backward rolls, bridges, handstands and cartwheels. Parents please provide snacks for your child, as we will be breaking daily for a snack.

8-12 yrs / 1 wk / \$80

Jefferson County Community Center

| | | |
|----------------------|---------------------------|--------------------|
| Program #5128 | Mon-Fri, 6/25-6/29 | 1:00-4:00pm |
| Program #5129 | Mon-Fri, 7/16-7/20 | 1:00-4:00pm |

JCPRC Swim at Jefferson Memorial Park Pool



Jefferson County Parks and Recreation and Charles Town Parks and Recreation are partnering together to bring you summer swim lessons!

Summer Swim lessons are taught by the Jefferson Memorial Pool staff. Instructors are Red Cross Certified Lifeguards and/or Instructors.

All Lessons are Monday-Thursday.

Cost: \$50/week

Friday will be used for make-up. For everyone's safety the baby pool will not be accessible during swim lessons.

Only registered students will be permitted in the main pool and only during their class time.

Guppies 1 - Ages 3-5

Children will be in the water standing or wear backpacks. Focus will be on comfort in the water and independent movements leading to gliding and floating without backpacks.

Goals for this class are:

- Enter the water willingly and/or independently.
- Blow Bubbles
- Put face in the water
- Skull with support or standing
- Kick with a kickboard or holding wall
- Front and back glides
- Supported back float

| | | |
|---------------|---------------------|----------------|
| Program #5059 | Mon-Thur, 6/11-6/14 | 10:10-10:40 am |
| Program #5060 | Mon-Thur, 6/25-6/28 | 10:10-10:40 am |
| Program #5061 | Mon-Thur, 7/9-7/12 | 10:10-10:40 am |
| Program #5062 | Mon-Thur, 7/23-7/26 | 10:10-10:40 am |
| Program #5063 | Mon-Thur, 7/30-8/2 | 10:10-10:40 am |
| Program #5064 | Mon-Thur, 6/11-6/14 | 11:20-11:50 am |
| Program #5065 | Mon-Thur, 6/25-6/28 | 11:20-11:50 am |
| Program #5066 | Mon-Thur, 7/23-7/26 | 11:20-11:50 am |
| Program #5067 | Mon-Thur, 7/30-8/2 | 11:20-11:50 am |
| Program #5068 | Mon-Thur, 7/30-8/2 | 6:10-6:40 pm |

Guppies 2 - Ages 4-5

Children who can demonstrate all skills in Guppy 1, especially entering water independently and putting their face in the water, will be enrolled in Guppies 2. Students may wear backpacks. The focus of this class will be on beginning front crawl skills.

Goals for this class are all of Guppy 1 plus:

- Step or jump into chest deep water
- Bobbing 5-10 times while holding the wall
- Retrieving an item from bottom in chest deep water
- Front float
- Arm and leg motions on front
- Treading/floating for 20 seconds

| | | |
|---------------|---------------------|----------------|
| Program #5069 | Mon-Thur, 6/11-6/14 | 10:45-11:15 am |
| Program #5070 | Mon-Thur, 6/25-6/28 | 10:45-11:15 am |
| Program #5071 | Mon-Thur, 7/9-7/12 | 10:45-11:15 am |
| Program #5072 | Mon-Thur, 7/23-7/26 | 10:45-11:15 am |
| Program #5073 | Mon-Thur, 7/30-8/2 | 10:45-11:15 am |
| Program #5074 | Mon-Thur, 7/30-8/2 | 6:45-7:15 pm |

Goldfish - Ages 6 & up

Children should be at least 6 years old and MUST be able to stand in 30 inches of water. This level focuses on floating, beginning front crawl, and treading. (This level will NOT use backpacks)

Goals for this class are:

- Enter and exit water independently
- Blow bubbles
- Bob 10 times
- Retrieving an item from bottom in chest deep water
- Front & Back Glide, Front & Back Float
- Front crawl for 5 body lengths
- Tread for 20 seconds

| | | |
|---------------|---------------------|---------------|
| Program #5052 | Mon-Thur, 6/11-6/14 | 9:35-10:05 am |
| Program #5054 | Mon-Thur, 6/25-6/28 | 9:35-10:05 am |
| Program #5055 | Mon-Thur, 7/9-7/12 | 9:35-10:05 am |
| Program #5056 | Mon-Thur, 7/23-7/26 | 9:35-10:05 am |
| Program #5057 | Mon-Thur, 7/30-8/2 | 9:35-10:05 am |
| Program #5058 | Mon-Thur, 7/30-8/2 | 5:35-6:05 pm |

Pufferfish - Ages 6 & up

Children should be at least 6 years old (but most will be 8-10 yrs old) and MUST be able to stand in 30 inches of water. Children must be able to do a combination of floating/swimming/treading in deep water for 15 seconds to be ready for this level. Pufferfish will work on perfecting their front crawl while also learning back stroke, butterfly, and breaststroke.

Goals for this class are:

- Float & tread for 60 seconds
- Front crawl 25 yards
- Elementary backstroke 25 yards
- Begin butterfly, breast, and back stroke

| | | |
|---------------|---------------------|--------------|
| Program #5037 | Mon-Thur, 6/11-6/14 | 9:00-9:30 am |
| Program #5038 | Mon-Thur, 6/25-6/28 | 9:00-9:30 am |
| Program #5039 | Mon-Thur, 7/9-7/12 | 9:00-9:30 am |
| Program #5040 | Mon-Thur, 7/23-7/26 | 9:00-9:30 am |
| Program #5041 | Mon-Thur, 7/30-8/2 | 9:00-9:30 am |
| Program #5043 | Mon-Thur, 6/11-6/14 | 5:00-5:30 pm |

Shark - Ages 6 & up

Sharks must be at least 6 years old (but most will be 11-12 yrs old) and MUST be able to stand in 30 inches of water. Prior to entering this level, children should be able to front crawl for 25 yards and elementary backstroke for 25 yards. This level will focus on stroke development and strength, competitive swimming techniques, and basic lifeguard rescue skills.

Goals for this class are:

- Competitive entry (shallow dive)
- 50 yards each: front crawl, backstroke, breaststroke
- Lifeguarding recognition skills (drowning vs. distress)
- Simple Lifeguard rescues

| | | |
|---------------|---------------------|--------------|
| Program #5044 | Mon-Thur, 6/11-6/14 | 9:00-9:30 am |
| Program #5046 | Mon-Thur, 6/25-6/28 | 9:00-9:30 am |
| Program #5047 | Mon-Thur, 7/23-7/26 | 9:00-9:30 am |
| Program #5049 | Mon-Thur, 7/30-8/2 | 9:00-9:30 am |

Family Swim Want to jump in the pool but can't make it during the week?

The Jefferson Memorial Park Pool will offer an open swim option on Saturday mornings from 10am-12pm.

Cost \$2/person, children 2 and under are free.

Sports Camps

Amazing Athletes Camp

Sports instruction designed for preschool children to keep young athletes focused, active and having fun. They may explore soccer, basketball, football, T-ball, tennis and golf. Using special kid-friendly terms, your child will learn proper techniques for each sport, fundamentals of scoring, rules and terminology. Class includes proper warm-up, cardio exercise, muscle toning, hand-eye coordination drills, and speed and agility exercises. Children will have fun with a sports craft. Please pack water and small snack.

5-7 yrs / 4 days / \$60 Instructor Heidi Citro

Jefferson County Community Center

Program #5149 Mon-Fri, 7/2-7/6 1:00 pm-4:00 pm

(no camp 7/4)

5-7 yrs / 1 wk / \$75 Instructor Heidi Citro

Jefferson County Community Center

Program #5150 Mon-Fri, 7/9-7/13 1:00 pm-4:00 pm

All Sports Kinder Camp

This camp will introduce basic fundamental skills in different sports. Develops and promotes hand-eye coordination, movement, balance, and most importantly having fun. Sports may include basketball, T-ball, tennis, soccer and more. Children will also have fun with a sports craft. Please pack water and a small snack.

3-4 yrs / 1 wk / \$75 Instructor Heidi Citro

Jefferson County Community Center

Program #5147 Mon-Fri, 6/18-6/22 9:00am-12:00 pm

Program #5148 Mon-Fri, 7/23-7/27 9:00am-12:00 pm

Intermediate Volleyball Prep Clinic

Enjoy 2 evenings of this fun volleyball prep clinic. This clinic will cover a variety of skills, drills and games. The focus will be on fine tuning the skills of intermediate players and preparing them for school tryouts.

10-12 yrs / 2 days / \$60

Instructors Cami Espiritu/Heather Niedermeier

Jefferson County Community Center

Program #5151 Mon/Tues, 7/30-7/31 6:00-8:00 pm

Advanced Volleyball Prep Clinic

Enjoy a fun volleyball camp which will cover a variety of skills, drills, and games. This camp will focus on fine tuning the skills of advanced players.

13-15 yrs / 2 days / \$60

Instructors Cami Espiritu/Heather Niedermeier

Jefferson County Community Center

Program #5152 Wed/Thur, 8/1-8/2 6:00-8:00 pm

Beginner Volleyball Clinic

Join Coach Cami and Coach Heather in this beginner clinic. Beginner players will learn skills such as hitting, serving, setting and passing. Clinic will include small sided games and scrimmages. This clinic is for players with little to no experience.

8-13 yrs / 6 wks / \$65

Instructors Cami Espiritu/Heather Niedermeier

Jefferson County Community Center

Program #5249 Mon, 8/20-9/24 6:00-7:00 pm

Program #5250 Mon, 10/1-11/5 6:00-7:00 pm

Sports Express Camp

If you don't want your child sitting around this summer, then try this camp for youth ages 6-13. Campers may have the opportunity to experience a variety of sports and games which might include, but not limited to, flag football, kickball, whiffle ball, badminton, floor hockey, basketball, volleyball, pickleball and much more. Campers must bring a packed lunch and water bottle.

A "before-care" option can be added to your week of Sports Express for \$15/week, this would allow you to drop off as early as 8am.

6-13 yrs / 1 wk / \$92 Instructor Jay Earl

Jefferson County Community Center

Program #5132 Mon-Fri, 6/4-6/8 9:00 am-5:00 pm

Program #5133 \$15/wk before care 8:00 am-9:00 am

6-13 yrs / 1 wk / \$92 Instructor Jay Earl

Jefferson County Community Center

Program #5134 Mon-Fri, 6/18-6/22 9:00 am-5:00 pm

Program #5135 \$15/wk before care 8:00 am-9:00 am

6-13 yrs / 1 wk / \$92 Instructor David Viands

Jefferson County Community Center

Program #5136 Mon-Fri, 6/25-6/29 9:00 am-5:00 pm

Program #5137 \$15/wk before care 8:00 am-9:00 am

6-13 yrs / 1 wk / \$92 Instructor David Viands

Jefferson County Community Center

Program #5138 Mon-Fri, 7/16-7/20 9:00 am-5:00 pm

Program #5139 \$15/wk before care 8:00 am-9:00 am

6-13 yrs / 1 wk / \$92 Instructor Jay Earl

Jefferson County Community Center

Program #5140 Mon-Fri, 7/23-7/27 9:00 am-5:00 pm

Program #5141 \$15/wk before care 8:00 am-9:00 am

6-13 yrs / 1 wk / \$92 Instructor Jay Earl

Jefferson County Community Center

Program #5142 Mon-Fri, 7/30-8/3 9:00 am-5:00 pm

Program #5143 \$15/wk before care 8:00 am-9:00 am

Archery Camp

Youth ages 6-14 are encouraged to try this camp. Archery can be a rewarding, life long activity which develops self confidence and discipline. The camp is broken into two sessions: Beginner or Intermediate. Participants should bring water to camp. Camp spaces are limited so please register early.

6-14 yrs / 4 days / \$92 Instructor Jay Earl

Sam Michael's Park—Boy Scout Area

Program #5144 Mon-Thur, 6/11-6/14 8:30am-12:00pm

Program #5145 Mon-Thur, 7/9-7/12 8:30am-12:00pm

Program #5146 Mon-Thur, 8/6-8/9 8:30am-12:00pm



Slam'n Jam'n Basketball Camp w/ Shepherd Rams

Have you ever wanted to learn how to play like a Shepherd Ram? This could be your opportunity. If you are between the ages of 6-13, you can sign up for one of the Slam'n Jam'n Camps this summer that will be instructed by Shepherd University Head Coach Justin Namolik, and his staff and players. This camp for boys and girls is designed for beginner to advanced basketball players. Participants will enjoy a memorable week learning new skills and tactics while refining their passing, dribbling, and shooting skills as well as providing individual fundamental instruction that is applied to the team concept. Each camper will receive a camp T-shirt. Each camper must wear comfortable clothes, sneakers, and bring a snack and water bottle to camp daily.

6-13 yrs / 4 days / \$85

Instructor Shepherd Basketball Coaching Staff
Jefferson County Community Center
Program #5130 Mon-Thur, 6/11-6/14
9:00am-12:00pm

Nikki Teasley Basketball Camp

Have fun in this basketball camp offered by former WNBA champion, and WNBA All-Star MVP Nikki Teasley. Campers will develop skills such as dribbling, passing, shooting, offense, defense, rebounding and moves. Campers will also play fun drills and games.

7-12 yrs / 4 day / \$70

Instructor Nikki Teasley
Jefferson County
Community Center
Program #5169
Mon-Fri, 7/2-7/6
9:00am-12:00 pm
 (No class 7/4)



7-12 yrs / 5 day / \$85

Instructor Nikki Teasley
Jefferson County Community Center
Program #5170 Mon-Fri, 8/6-8/10 9:00am-12:00 pm

Panhandle Soccer Camp

GOOOOAAAAAL! This camp will be used to help teach skills and build foundations of what a soccer player needs to success on and off the field. There will be a focus on developing the individual skills and techniques and how to utilize those within the game. Please be sure to bring plenty of water. Register for back-to-back sessions and SAVE!

5-8 yrs / 5 wks / \$50 for 1 session or \$90 for 2 sessions

Sam Michael's Park - Multipurpose Field behind JCCC
Instructor - David Leonard & Aric Cananico

Program #5270 Mon, 6/4-7/9 5:00-6:15 pm
 (no class 7/2)

Program #5271 Mon, 7/16-8/13 5:00-6:15 pm

9-12 yrs / 5 wks / \$55 for 1 session or \$100 for 2 sessions

Sam Michael's Park - Multipurpose Field behind JCCC
Instructor - David Leonard & Aric Cananico

Program #5272 Wed, 6/6-7/11 5:00-7:00 pm
 (no class 7/4)

Program #5273 Wed, 7/18-8/15 5:00-7:00 pm

Flag Football Camp

This camp is aimed at teaching your child the basics of flag football. We will learn offensive and defensive moves as well as specialty skills. Please be sure to send a snack and bottled water to camp with your child. We will be outside for part of the camp.

7-10 yrs / 4 days / \$55 Instructor David Viands

Sam Michael's Park - Multi-purpose field behind JCCC
Program #5131 Mon-Th, 7/23-7/26 1:00-4:00 pm



Scholarships Available

Jefferson County Parks and Recreation strives to keep camps affordable for all.

If you are unable to participate in our camps due to cost, please consider applying for a Scholarship. Funds for scholarships are provided by the Jefferson County Commission and by private and business donors.

Scholarships are available for some programs.

Contact Brenda at (304) 728-3207 or email bwhittington@jcprc.org for an application or if you would like to donate. Thank you!

Sports Leagues

Sandlot Baseball

Do your kids LOVE baseball? Well...when their season ends, keep them playing the sport they love! We are setting up a pick-up style, Sandlot Baseball program so your kids don't have to stop playing during the summer. Kids will show up each Monday for 4 weeks and teams will be chosen "Sandlot" style. Everyone plays and bats. The best part...the kids run the program! The games will be "kid pitched" and they will make the calls on the field. This method of play will also allow for leadership, teamwork and conflict resolution amongst themselves. There will be little to no coach, parent or adult input or pressure allowing the kids to JUST PLAY! We will have staff on site to handle any conflict or safety issues that may arise, outside of that...the kids will PLAY BALL! Kids will be split into 3 age groups allowing them to play on one of three fields here at Sam Michael's. There will be a 9-10 age group, 11-12 age group and 13-14 age group. If numbers are not there, we will combine ages to allow them to play.

The first week of each session will feature an "equipment swap". Parents are encouraged to bring in gently used or new equipment that your children have outgrown or don't use. There will be tables setup for equipment to be placed for others to see and take/trade.

Pre-Registration is highly encouraged for this activity. There are limited spots for this program.

9-14 yrs / 4 wks / \$30

Jefferson County Community Center

Program #5246 Mon, 6/4-6/25 5:00-7:00 pm

Program #5247 Mon, 7/16-8/6 5:00-7:00 pm

JCPRC Volleyball League

This league designed for players to learn the fundamental volleyball skills and teamwork skills while having fun. Our goal is to provide an atmosphere that promotes sportsmanship, fair play in a safe environment for players, coaches, officials, and spectators.

Background checks will be conducted on all volunteer coaches. Volunteer coaches are required to attend a pre-season coaches meeting. Teams will practice two nights per week at the Jefferson County Community Center and/or Wildwood Middle School. Practices will begin on Tuesday, April 10. Practices are held on Tuesdays and Thursdays. League games will start on Saturday, April 21. Teams will play 8 games.

Participant's age is determined by how old they will be on April 1. Game times will vary on Saturdays between 9am-4pm. **Coaches Meetings held on 3/7/18 and 3/28/18 at 6:30 pm at the Jefferson County Community Center.** Week 8 will consist of a league-wide tournament.

All 14 year olds entering this league must be in 8th grade. The 8-11 junior division is co-ed.

Co-Ed League

8-11 yrs
Program #4795

Individual (co-ed)
\$60/child

8-11 yrs
Program #4796

Coach's Child/Sibling (co-ed)
\$50/child

Girls League

12-14 yrs
Program #4793

Individual
\$60/child

12-14 yrs
Program #4794

Coach's Child/Sibling
\$50/child

Men's Softball League

Jefferson County will be offering it's Men's Softball League this spring/summer. Games will start in April/May and run through June.

If interested, or for more information contact Jason DeAngelo at jasonda35@gmail.com or 304-283-6904.

Ages 18 & up

Leetown Park

Games start in April/May



Care from the providers you can trust in Charles Town.

We want to help, no matter the issue at hand.

Services include: Injuries Illness Physical Exams, Flu & Tetanus Vaccines and PPD, X-Rays, Pediatric Care, Lab Tests & Screenings, Workplace Injury Care, and more!

84 Somerst Blvd. - Charles Town, WV 25414 - 304-728-8533

**Sports
Physicals
\$10!**

**DOT
Physicals
\$90!**

Annual Kids Fishing Derby

JCPRC and the Izaak Walton League of Jefferson County will be sponsoring this free event for youth at the Izaak Walton Club in Leetown on Sat., June 3rd. This is an excellent opportunity for parents to spend some quality time with their children. The ponds will be fully stocked with various kinds of fish. Fishing will begin at 8:00 a.m. Space is limited so pre-registration is required. Fishing poles and bait will not be provided. In the event of inclement weather please call our cancellation line at (304)728-9044.

2-15 yrs / 1 day / FREE
Izaak Walton League
Program #5268 Sat 6/2 8:00-10:00 am

JCCC Community Yard Sale

Time for Spring Cleaning! Join us for our annual community yard sale at the Jefferson County Community Center in Sam Michael's Park! The JCPRC will provide tables and advertisements for this event. Ads will be placed in local newspapers, facebook, signage and more. Your space will consist of two eight foot tables in a 8'x16' space.

All Ages / 1 day / \$25 per space
Jefferson County Community Center
Program #4907 Sat 4/14 8:00 am-1:00 pm

Jefferson County Parks & Recreation



Saturday, June 30

FREE ADMISSION

Craft & Business Vendors

Food Vendors

Musical Entertainment

FIREWORKS!

Grab your chairs, blankets, family & friends!

No pets. No glass containers.



This community events is PAID through fundraising efforts by Jefferson County Parks & Rec. If you would like to donate, please call our office at 304-728-3207. Thank you for your support.

presenting sponsor



Art Camps

Nature & Art Camp

For the creative kid who just can't stay cooped up in the studio! Campers will learn about artists influenced by nature, like John James Audubon, Georgia O'Keeffe, and Vincent VanGogh. Campers will paint, draw, and even sculpt, and we will be outside every day, exploring nature to find our own inspiration-- and materials-- for our own unique artwork. Discover where Art and Science meet!

A \$10 supply fee is due to instructor (cash or check) on first day of camp.

Jefferson County Community Center

6-12 yrs / 1 wk / \$75

Instructor Emily Vaughn

Program #5153 Mon-Fri, 6/11-6/15

1:00-4:00 pm

Art & Architecture Camp

Do you love to dream up cities of the future? Are you curious what goes into planning a building? Are Legos your favorite toy? Then this camp is for you! Campers will discover the artistry that goes into building the world, create blueprints and 3-D models of their dream buildings, and be inspired by architects such as Frank Lloyd Wright, Filippo Brunelleschi, and Frank Gehry.

A \$15 supply fee is due to instructor (cash or check) on first day of camp.

Jefferson County Community Center

6-12 yrs / 1 wk / \$75

Instructor Emily Vaughn

Program #5154 Mon-Fri, 6/25-6/29

1:00-4:00 pm

Exploring 3-Dimensional Art Camp

Escape from your virtual and 2D world and venture into the 3-D world of art where you build with your hands and see things in the round. Develop fine motor skills, create, and collaborate with others to build sculptures, mobiles, and other three-dimensional artworks. Focus is on fun and creativity. Please bring an old shirt and a snack, we plan on getting messy and having fun!

A \$10 supply fee (cash or check) is due to instructor on first day of camp.

6-10 yrs / 1 wk / \$70

Jefferson County Community Center

Instructor Sheri Fiolek

Program#:5157 Mon-Fri, 7/9-7/13

1:00 pm-4:00 pm

Art in Action

Campers of all ability levels will create with paints, markers, charcoal, and more! Paint a still like of a donut, create a superhero comic, draw a tag in graffiti-style letters, and design your dream skateboard deck.

A \$10 supply fee (cash or check) is due to instructor on first day of camp.

6-12 yrs / 1 wk / \$75

Jefferson County Community Center

Instructor Emily Vaughn

Program #5155 Mon-Fri, 7/16-7/20

1:00-4:00 pm

Comics & Cartooning Camp

Do you love to read comic books, watch cartoons, or draw funny pictures? Campers will draw, paint, and even animate during this week of cartooning fun. Learn about the invention of animation, the art of drawing a good caricature, create your own comic book, and even draw in popular Japanese anime and manga style.

A \$15 supply fee (cash or check) is due to instructor on first day of camp.

6-12 yrs / 1 wk / \$75

Jefferson County Community Center

Instructor Emily Vaughn

Program #5156 Mon-Fri, 7/23-7/27

1:00-4:00 pm



Art Exploration

Take an Art Adventure. This camp focuses on developing fine motor skills, media and techniques, creativity, and collaboration. Learn about famous artists and art styles through paint, scratch art, shrink art and more while developing your own unique expressive style. Bring an old shirt and a snack we plan on getting messy with an emphasis on and having fun.

A \$10 supply fee (cash or check) is due to instructor on first day of camp.

6-9 yrs / 1 wk / \$70

Jefferson County Community Center

Instructor Sheri Fiolek

Program#:5158 Mon-Fri, 7/9-7/13 9:00 am-12:00 pm

Program#:5159 Mon-Fri, 7/30-8/3 9:00 am-12:00 pm

Art Camps

Drawing Connections

Take a look at the world around you, grab your inspiration from what you observe! Use the shapes, lines, colors, and forms to create your own work of art with different materials and techniques.

A \$10 supply fee is due to instructor
(cash or check) on first day of camp.

South Jefferson Elementary School

8-11 yrs / 4 days / \$70

Instructor Judy Chesley

Program #5160 Mon, Tues, Thur, Fri, 6/18-6/22

(no camp on 6/20)

9:00 am-12:00 pm

Printmaking - Making Awesome Impressions!

Experiment with ways to create a design once and make copies or prints. It's amazing to create multiple images - There's chalk, crayons, objects from nature, cardboard, styrofoam and junk.

A \$10 supply fee is due to instructor
(cash or check) on first day of camp.

South Jefferson Elementary School

8-11 yrs / 4 days / \$70

Instructor Judy Chesley

Program #5161 Mon, Tues, Thur, Fri, 6/18-6/22

(no camp on 6/20)

1:00 pm-4:00 pm

Celebrate Cultural Diversity

Grab your passport and let us travel around the world and learn the art of different cultures - Japan, Africa, South America, Quilts, Native American, and Egyptian. Fans, Lanterns, Bookmaking, Dragons, Kimono Dolls, Crests, Carp Kites, Origami Boxes, Weaving & more...

A \$15 supply fee (cash or check) is due to
instructor on first day of camp.

8-11 yrs / 4 days / \$70

South Jefferson Elementary School

Instructor Judy Chesley

Program #5162 Mon-Thur, 6/25-6/28

1:00-4:00 pm

The Wonder of Art - Meet the Masters!

Meet The Masters - Explore the works of the Greatest Artists of the world - then try your hand at creating your own masterpiece... Picasso, O'Keeffe, Cezanne, Klimt, Monet, Klee, Miro, Matisse, and Van Gogh.

A \$10 supply fee is due to instructor
(cash or check) on first day of camp.

South Jefferson Elementary School

8-11 yrs / 4 days / \$70

Instructor Judy Chesley

Program #5163 Mon-Th, 6/25-6/28

9:00 am-12:00 pm

Make it Rain! Make a Native American Rain Stick

Students will learn about the legend of the rain stick and make their own using paper mache and acrylic paint.

A \$5 supply fee is due to instructor
(cash or check) on first day of camp.

Jefferson County Community Center

8-12 yrs / 1 wk / \$45

Instructor Jennifer Glymph

Program #4673 Mon-Th, 6/18-6/21

1:00 - 4:00 pm



About the Blue Ribbon Recreation Program...

Through a grant provided by Autism Speaks, Eastern Panhandle Indigo Children has partnered with Jefferson County Parks and Recreation Commission to implement **The Blue Ribbon Recreation Program** — designed for persons of all ages and abilities on the autism spectrum. The partnership will allow

individuals with autism to enjoy a successful summer camp and other recreational activities in an inclusive setting with **one-on-one** aides. The Blue Ribbon Recreation Program will accept all applicants on the spectrum who wish to enroll in JCPR classes throughout the 2017 summer program. Your loved one will enjoy all the same opportunities that any typical person would with the assimilation support and guidance of a properly trained one-on-one aide. This is an historic opportunity for our autism community in Jefferson County. Let the fun and physical fitness begin!!!!

For more information and to sign-up your child, please contact Brenda at (304) 728-3207.

Jefferson County Parks & Recreation ~ 15 ~ Register for classes at: www.jcprc.org

Special Interest Camps

Animal Adventures Camp

This is the best up close and personal camp for animal lovers! There will be two or more animals present each day. Under close adult supervision, participants will observe, hold, pet, and feed animals all week. Animals include birds, reptiles, mammals, amphibians, and invertebrates and will be chosen from Critters & Conservation's over 35 species. Students will learn about proper animal handling, basic biology, animal behavior, animals' jobs in nature, the food web, husbandry, geography, biomes, the importance of biodiversity, and much more. Camp also includes coloring, crafts, outside play, and free time with animal themed toys, books, and puzzles. Please remember to bring a snack, a drink, and your sense of curiosity and adventure! Bring or apply sunscreen. If your child will be attending the 9am-3pm Animal Adventures Camp, please provide them with a packed lunch in addition to their snack.

4-12 yrs / 1 wk / \$150 Instructor Jill Fleet

Jefferson County Community Center

Program #5174 Mon-Fri, 6/11-6/15 9:00 am-12:00 pm

4-12 yrs / 1 wk / \$300 Instructor Jill Fleet

Blue Ridge Primary School

Program #5175 Mon-Fri, 7/30-8/3 9:00 am-3:00 pm

Reptile Adventure Camp

This is the best up close and personal camp for reptile lovers! There will be two or more reptiles present each day. Under close adult supervision, participants will observe, hold, pet, and feed reptiles all week. Animals include lizards, snakes, a tortoise, and turtle from Critters & Conservation's over a dozen reptile species. Students will learn about reptiles, dinosaurs, animal handling, basic biology, animal behavior, animals' jobs in nature, the food web, husbandry, geography, biomes, the importance of biodiversity, and much more. Camp also includes coloring, crafts, outside play, and free time with reptile themed toys, books, and puzzles. Please remember to bring a snack, a drink, and your sense of curiosity and adventure! Bring or apply sunscreen.

4-12 yrs / 1 wk / \$150 Instructor Jill Fleet

Jefferson County Community Center

Program #5176 Mon-Fri, 7/9-7/13 1:00-4:00 pm

Junior Police Week

Ever wondered what it's like to be a police officer? Well, now you can find out...join us and Sgt. Robert Sell from the Jefferson County Sheriff's Office for a week of fun and excitement! Your child will enjoy activities throughout the week that will highlight what police officers do. Activities may include, K9, SWAT, criminal code, marching and formations, motor vehicle code, CSI, go on a field trip to meet a judge and see the courthouse and much more. There will be a field trip on Wednesday, June 27 to the courthouse.

10-15 yrs / 1 wk / \$65 Instructor Sgt. Robert Sell

Jefferson County Community Center

Program #5165 Mon-Fri, 6/25-6/29 9:00 am-12:00 pm

Field Trip Camp - with Mr. Earl

Field Trips will leave at different times. Drop-off at the Jefferson County Community Center will be at 9:00 a.m. for the trips on Monday thru Thursday. Friday's trip to Hershey Park will leave from the JCCC at 7am and will return at 6:30pm. Please check with the camp director for specific departure/arrival times for each day's trip. During wait time for bus departure and drop off, games and other activities will be provided for the children until they are boarded. Pick-up for campers will be at 4:00 p.m., unless otherwise noted. All trips are transported by Jefferson County School Buses. Campers will be required to bring special items each day. Campers must bring a packed lunch to camp each day, and wear sneakers, along with a snack and plenty of water. Other examples include: swimwear, extra cash for concessions/souvenirs, sunscreen, etc. Parents/Guardians who would like to volunteer to assist with the camp must pay their own fees for entry for each field trip. Parents/Guardians will need to submit a volunteer background check by June 11, 2018 in order to attend any trip. Camp cost includes tickets and admission for all trips daily. Please note, some pick-up times may run late for certain trips due to afternoon traffic.

8-15 yrs / 1 wk / \$250

Jefferson County Community Center

Program #5164 Mon-Fri, 6/25-6/29 9:00 am-4:00 pm

Monday, June 25, 2018

ClimbZone, Laurel, MD

Tuesday, June 26, 2018

Massanutten Resort Indoor Waterpark, McGaheysville, VA

Wednesday, June 27, 2018

Harpers Ferry National Park, Harpers Ferry, WV

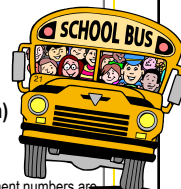
Thursday, June 28, 2018

Greenbriar State Park, Boonsboro, MD

Friday, June 29, 2018

(camp departs at 7:00 am, returns at 6:30 pm)

Hershey Park, Hershey, PA



JCPRC reserves the right to cancel any trip or the entire camp if minimum enrollment numbers are not met. Participating kids need to be registered by JUNE 11 to ensure the camp will run!

LEGO Adventures Camp

Build engineer designed projects such as boats, bridges, mazes, cars, and use special pieces to create your own unique designs. Kids will also have fun with LEGO Star Wars and other fun LEGO kits. Children will not be allowed to take any of the LEGOS home.

7-12 yrs / 1 wk / \$60 Instructor Heidi Citro

Jefferson County Community Center

Program #5166 Mon-Fri, 6/11-6/15 1:00-4:00 pm

Program #5168 Mon-Fri, 7/16-7/20 9:00am-12:00pm

7-12 yrs / 4 days / \$50 Instructor Heidi Citro

Jefferson County Community Center

Program #5167 Mon-Fri, 7/2-7/6 9:00am-12:00pm

Scholarships are available for some programs.

Please contact Brenda at: 304-728-3207

or email: bwhittington@jcprc.org

Ride from the Start Pony School

These 'parent-child' classes, brought to you by instructors from Ride From the Start Pony School, each include a story, song, hands-on activity, a horse lesson, a craft/manipulative and a short riding lesson. Your child will learn a wide range of information about ponies. They will have fun and become more confident around ponies, and gradually learn to control the pony at the walk. This is an ideal program for small children who are fearful around large animals, but will also provide enough hands-on time to please children who are more eager to interact with the ponies. Classes may run late due to number of students and to ensure each child has their time with the horse. For more information about Ride from the Start Pony School please visit www.msshelleysponyschool.com.

2 1/2-5 yrs / 4 wk / \$70

Miller Farms, 4120 Bower Road, Kearneysville, WV

| | | |
|----------------------|----------------------|-------------------------|
| Program #5240 | Sat, 6/2-6/23 | 9:30-10:30 am |
| Program #5241 | Sat, 6/2-6/23 | 11:00 am-2:00 pm |
| Program #5242 | Sat, 7/7-7/28 | 9:30-10:30 am |
| Program #5243 | Sat, 7/7-7/28 | 11:00 am-2:00 pm |
| Program #5244 | Sat, 8/11-9/1 | 9:30-10:30 am |
| Program #5245 | Sat, 8/11-9/1 | 11:00 am-2:00 pm |

Youth Preparatory Fencing Class

This 40-min class, held once per week, is designed to prepare your child to enter the sport of fencing with proper muscle development and speed needed to succeed in this sport, in a safe environment with age appropriate instruction. Given the age group, there are no fencing bouts in this particular class. Students will use our foil swords, with blade work sword drills. There will be fencing footwork to help condition the muscles to become acclimated to all the movements in fencing. Your child will learn to think and move as a fencer, while having fun! There is a \$22 materials fee due to the instructor at the first class, which will pay for official fencing gloves.

**6-8 yrs / 6 wks / \$105 Instructor David Copeland
Harpers Ferry KOA – Cutler Hall**

| | | |
|----------------------|----------------------|---------------------|
| Program #5248 | Mon, 4/23-6/4 | 5:10-5:50 pm |
|----------------------|----------------------|---------------------|

(no class 5/28)

Learn to Ride

Parents, can't get your child to let you take those training wheels off their bike? Come to Sam Michael's Park to get them off. JCPRC staff will be outside with your child to help them succeed. Most of the training will be done in the grass and with mats in case of a fall. A special technique will also be used to enhance balance before they try to ride. Child must have a helmet. JCPRC will also be doing bike fitting, chain lubrication, tire inflation, and helmet fitting. Please be sure to bring your child's bike. Training wheels must be easy to remove. Please bring them as well if your child uses them.

**4-10 yrs / 1 day / \$18 Instructor Jeff Fiolek
Jefferson County Community Center,
rear parking lot.**

| | | |
|----------------------|------------------|--------------------------|
| Program #4934 | Sat, 4/14 | 10:00 am-12:00 pm |
| Program #4935 | Sat, 5/5 | 10:00 am-12:00 pm |
| Program #4936 | Sat, 6/9 | 10:00 am-12:00 pm |
| Program #5237 | Sat, 7/14 | 10:00 am-12:00 pm |
| Program #5238 | Sat, 8/4 | 10:00 am-12:00 pm |
| Program #5239 | Sat, 9/8 | 10:00 am-12:00 pm |

Quidditch Camp

Enjoy an entire week learning and playing this fun game inspired by the ever popular Harry Potter books. Kids will learn the game, rules, and play!

**7-12 yrs / 1 wk / \$60 Instructor Heidi Citro
Sam Michael's Park**

Program #5173 Mon-Fri, 7/23-7/27 1:00-4:00 pm

Fun with Food - Kids Cooking Camp

Does your kid love to cook? Jefferson County Parks and Recreation has stirred up something just for them, a hands-on cooking camp! Kids will learn creative, simple, delicious recipes that encourage good nutritional choices. Cooking is a great way to learn team work and build self-esteem.

Kids will learn basic measurements, kitchen safety, identifying utensils, preparing meals, snacks, and much more. On the final day, parents will enjoy lunch prepared by their own little chef.

**5-8 yrs / 4 days / \$75 Instructor Flo Best
Page Jackson Elementary School**

Program #5194 Mon-Th, 6/25-6/28 9:00 am-12:00 pm

Farm Camp

Spend your days on a farm. Feed the Chickens, ducks, guinea hens, peacocks, rabbits, goats, horse, mule, goldfish, and cats while learning about their care and habitats. Learn about plants, gardens, and ecosystems. Lots of outdoor activities, music activities, and farm based crafts.

5-12 yrs / 1 wk / \$125

**The circa 1774 Estate of Thomas Hite
New Hopewell**

1354 Hite Road, Kearneysville

| | | |
|----------------------|---------------------------|------------------------|
| Program #5117 | Mon-Fri, 6/18-6/22 | 9:00 am-5:00 pm |
| Program #5118 | Mon-Fri, 7/2-7/6 | 9:00 am-5:00 pm |
| Program #5119 | Mon-Fri, 8/6-8/10 | 9:00 am-5:00 pm |

Color Guard Class

Come out and learn the basics of spinning Flags, Rifles, Sabers and more. Students will start by learning the basics of flags and progress to other equipment. Be ready to audition for any marching band and participate in a winter guard. Flags for use in class will be provided, but instructor will help you order, if you would like to purchase a practice flag of your own.

10-15 yrs / 12 wk / \$159

**Jefferson County Community Center
Program #5084 Mon, 3/12-5/28 7:30-8:30 pm**
(no class 7/30)

15 & up / 12 wk / \$159

**Jefferson County Community Center
Program #5116 Mon, 3/12-5/28 7:30-8:30 pm**
(no class 7/30)

4 week Color Guard Pass—Can be used for drop-in to Color Guard classes anytime during the session running 3/12-5/28.

Program #5115 Mon, 3/12-5/28 7:30-8:30 pm
(no class 7/30)



Bus Trips



Springtime in New York City*

We will take you to Manhattan and drop you off and you can enjoy the day shopping, exploring the city, etc. The day is yours to spend at your leisure until early evening. We will make a stop for food and a bathroom break going and coming from New York. Children must be accompanied by an adult.

All ages / 1 day / \$89
Bus departs from Food Lion in Charles Town
Program #4980 Sat, 4/21 time is TBD



Springfest Ocean City*

Calling all beach lovers! It's that time of year again, enjoy the day at the beach in Ocean City, Maryland at this annual event or just bask in the warm sunshine. Swim, buy arts and crafts, ride up and down the boardwalk on the trolley, fly a kite, eat seafood, listen to all the entertainment.

Doesn't this sound like fun?
 Children must be accompanied by an adult.

All ages / 1 day / \$89
Bus departs from Food Lion in Charles Town
Program #4982 Sat, 5/5
Program #4983 Sat, 9/22
time is TBD



Virginia's Piedmont

Please join Heritage Adventures for an overnight trip to Virginia's Piedmont to visit **Monticello and Montpelier**, the iconic homes of our third and fourth Presidents, Thomas Jefferson and James Madison. Join us as we explore the daily lives of these two famous founders and the men and women, free and enslaved, who made their lifestyles possible.

All ages / 2 days, 1 night
\$299 Double Occupancy,
\$349 Single Room
 Includes transportation by clean, modern coach, lodging, lunch daily (Michie Tavern on day one) breakfast, and admissions.
Program #5277
Fri-Sat, June 1-2, 2018
 Departs from Charles Town



Crab Feast & Cruise*

Enjoy a riverboat ride in Hurlock, MD and enjoy crabs, corn on the cob, Maryland crab soup, fried chicken, clam strips, coleslaw, dessert and a non-alcoholic drink. We will also visit Layton's Chance Vineyard, where you can purchase your favorite bottle of wine.

All ages / 1 day / \$123
Bus departs from Food Lion in Charles Town
Program #4981
Sat, July 14 time is TBD



Old Quebec City Trip

Join Heritage Adventures as we travel to Old Quebec City during the annual Fetes de la Nouvelle France (The Nee French Festival), 5 days of costumes, history and celebration of the French culture in North America. Destinations include: La Citadelle, the Musee du Fort, The Grande Allee, and the lower town. Lle d'Orlean, Montmorency Falls, a river cruise to the Irish Memorial on Grosse Ile, Wendake, First People's Reservation.

All ages / 7 days, 6 nights
\$2099 Double Occupancy,
\$2499 Single Room
Program #5278
Sun, July 28-Sat, Aug. 5
 Departs from Charles Town



"Mamma Mia!" - Totem Pole Playhouse*

"Mamma Mia!" is the tale of a mother, a daughter, three possible dads, and a trip down the aisle that you will never forget! The story-telling magic of ABBA's timeless songs propels this enchanting tale of love, laughter, and friendship into an unforgettable musical experience! Enjoy a lunch at Hickory Bridge Restaurant before the show. Bus, Lunch and Show included in admission price. Children must be accompanied by an adult.

All ages / 1 day / \$99
Bus departs from Food Lion in Charles Town
Program #5267
Wed, 8/8 time is TBD

***TRIPS ARE SCHEDULED AS A PARTNERSHIP WITH SCHROCK TRAVEL. SCHROCK TRAVEL MAY CANCEL TRIPS AT ANY TIME DUE TO LOW ENROLLMENT. IF TRIPS ARE CANCELED YOU WILL BE GIVEN A FULL REFUND.**



with *Chef Maggie Costello*

Perfect Pasta

Fettuccini Alfredo
Spaghetti with Classic Tomato Basil
Rigatoni Carbonara

Class will focus on cooking dried pasta to perfection!

16 & up / 1 day / \$35 Instructor Chef Maggie Costello
Wildwood Middle School Teaching Kitchen
Program #5113 Fri, 5/18 6:00-8:00 pm



Farmers Market Favorites

Panzanella Salad
Seared Steak with Chimichurri and Corn Tomato Salad
Pickled Vegetables with Yogurt Cream

This class will focus on basic knife skills and mise en place. It is also an awesome opportunity to introduce local produce. Menu items are light, yet are delicious.

16 & up / 1 day / \$35 Instructor Chef Maggie Costello
Wildwood Middle School Teaching Kitchen
Program #5103 Fri, 6/22 6:00-8:00 pm



Chef's Favorite

Guacamole with Tostones
Ricotta Stuffed Calzones
Baklava

It's time to celebrate Chef Maggie's favorite things! A bit of everything is on the menu!

16 & up / 1 day / \$35 Instructor Chef Maggie Costello
Wildwood Middle School Teaching Kitchen
Program #5104 Fri, 6/1 6:00-8:00 pm



Fajita Party

Chicken and Pablano Fajitas will be the star of this class! We will make our own flour tortillas and round out the meal with an avocado and corn salad.

16 & up / 1 day / \$35 Instructor Chef Maggie Costello
Wildwood Middle School Teaching Kitchen
Program #4999 Fri, 7/13 6:00-8:00 pm



\$5 materials fee due at beginning of each class



Jefferson County Parks and Recreation

SUMMER DAY CAMP

Ages 5-14

Sam Michael's Park

Wright Denny Intermediate

Shepherdstown Elementary

Bolivar Community Center



**Watch for Summer Camp
Discounts & Information
this Spring!**

Jefferson County Parks & Recreation ~ 19 ~ Register for classes at: www.jcprc.org

Adult & Teen Activities

Boot Camp

Burn fat & gain muscle, tone and strengthen your core all in one hour!! We start with 40 minutes of boot camp - this consists of a mixture of cardio segments and strength training segments and calisthenics. Plus, a few, fun surprises to burn fat and motivate you. We will end with 20 mins of Pilates core work that will target your abs, back, hips, and glutes. Beginner to Advanced variations will be taught. Weight and measurements are taken at the beginning and end of each session to check your progress. **DAYCARE AVAILABLE, BUT NOT GUARANTEED FOR THOSE WHO PRE-REGISTER.** Please see day care guidelines.

18 yrs & up / 8 wk / \$128

Jefferson County Community Center

Program #5216 Tues & Thur, 5/22-7/12 9:30-10:30 am
Program #5217 Tues & Thur, 7/17-9/6 9:30-10:30 am

18 yrs & up / 8 wk / \$70

Jefferson County Community Center

Program #5218 Tues, 5/22-7/10 9:30-10:30 am
Program #5219 Tues, 7/17-9/4 9:30-10:30 am
Program #5220 Thur, 5/24-7/12 9:30-10:30 am
Program #5221 Thur, 7/19-9/6 9:30-10:30 am

Guidelines for Childcare:

- Childcare is available only for the first 15 children.
 - No guarantee is made that childcare is available each class. Please call in advance for daily availability.
 - Participants **MUST** pre-register in order to take advantage of childcare.
 - Childcare is **FREE** for the first 2 children a participant has.
 - The participant must pay \$5 for the 3rd and 4th child each (not to exceed 4 children). This fee must be paid each time they bring more than 2 children.
- Fee is payable at the front desk before your class begins.

Zumba

Zumba takes the 'work' out of work-out, by mixing low-intensity and high-intensity moves for an interval-style, calorie-burning fitness dance party. It combines many elements of fitness: cardio, muscle conditioning, balance, flexibility, boosted energy, and a serious dose of awesome! Teens under the age of 18 must be accompanied by a paying adult.

13 yrs and up / 6 wks / \$40

Instructor Sonya Rowe

Jefferson County Community Center

Program #5004 Mon, 4/9-5/14 6:30-7:30 pm
Program #5005 Mon, 6/18-7/23 6:30-7:30 pm

Body Business

This is a full-body workout with choreographed dance routines, floor work, and stretching.

18 & up / 10 wks / \$50 Instructor Sandra Watkins

Shepherdstown Elementary School

Program #5232 Mon & Wed, 7/2-9/5 5:30-6:30 pm



This program is designed for teens between the ages of 13-17 who are seeking experience and to help prepare them for potential future employment in a Parks and Recreation or summer camp setting.

CIT duties include:

- Participating in teambuilding and trainings
- Assisting recreation leaders in arts & crafts
- Leading games
- Helping manage campers
- Helping to setup and clean up camp
- Being a great role model for the campers!

CIT benefits include:

- Having fun!
- Making friends in a team setting
- Learning job skills
- Community service hours
- Position yourself for future camp employment

At the end of the week you will receive an evaluation, constructive skills and community service hours. Also, you'll receive invaluable job training and experience. But maybe the most important thing you'll take home with you will be your new friends and your camp memories!

Cost is \$75 to participate.

For an application, please call our office at 304-728-3207.



100 MILES in 100 DAYS! Challenge

Jefferson County Parks and Recreation brings you Walk 100 Miles in 100 Days®. The goal of this 15-week program is to motivate you to get active by encouraging you to walk at least 1 mile everyday for 100 days. (June thru August)

Record at least 100 miles and turn in log form at the end of the program for a JCPRC Fitness Punch Pass. Other forms of cardiovascular (aerobic) exercise are encouraged: 20 minutes of aerobic exercise equals 1 mile.

NO MAX on miles that can be tracked. How far can you go?

Track of your miles on the log form and turn in at the end of the program.

Forms can also be picked up and returned to:

The Jefferson County Community Center

Or, you can download your own on our website: www.jcprc.org

Program #5266 to register FREE

Register at www.jcprc.org or call our office at 304-728-3207

Fitness with Suzanne

Fall Fitness with Suzanne will begin Monday 9/10/18

Trimnastics

A class to increase your strength and flexibility while trimming and toning the body with floor exercises that will help maintain or gain a fitness level for a healthier you! Stretching movements for flexibility can inch your way from stiff to limber. Bring an exercise mat and hand weights to each class.

Bring an exercise mat and hand weights to each class.

18 yrs and up / 6 wks / \$50 Instructor Suzanne Dillow
Ranson Elementary

Program #5251 Mon/Wed/Fri, 6/11-7/20 5:45-6:35 pm

18 yrs and up / 7 wks / \$55 Instructor Suzanne Dillow
Ranson Elementary

Program #5252 Mon/Wed/Fri, 7/23-9/7 5:45-6:35 pm

18 yrs and up / 6 wks / \$50 Instructor Suzanne Dillow
Zion Church 215 E. Washington St., Charles Town

Program #5253 Mon/Wed/Fri, 6/11-7/20 9:00-9:55 am

18 yrs and up / 7 wks / \$55 Instructor Suzanne Dillow
Zion Church 215 E. Washington St., Charles Town

Program #5254 Mon/Wed/Fri, 7/23-9/7 9:00-9:55 pm

Body In Motion

Relax in this calming class with slow, easy to follow simplified yoga movements and stretching to help improve flexibility, strength and balance while achieving a full range of body motion for a healthier you!

Bring an exercise mat to each class.

18 yrs and up / 6 wks / \$25 Instructor Suzanne Dillow
Zion Church 215 E. Washington St., Charles Town

Program #5255 Fri, 6/15-7/20 10:00-10:40 am

18 yrs and up / 7 wks / \$30 Instructor Suzanne Dillow
Zion Church 215 E. Washington St., Charles Town

Program #5256 Fri, 7/27-9/7 10:00-10:40 am

Just Move!

Get up and move with us! This is a class to get you back into exercise with low impact cardio, exercises to help strengthen and tone the body and improve flexibility for a total body workout.

Bring an exercise mat and hand weights to each class.

18 yrs and up / 6 wks / \$45 Instructor Suzanne Dillow
Bolivar Community Center

Program #5233 Tues/Thur, 6/12-7/19 11:40 am-12:35 pm

18 yrs and up / 7 wks / \$50 Instructor Suzanne Dillow
Bolivar Community Center

Program #5234 Tues/Thur, 7/24-9/6 11:40 am-12:35 pm

Summer Fitness Pass

Purchase a summer fitness pass for Summer fitness classes instructed by Suzanne Dillow. Participants must present their receipt when taking a class using the fitness pass.

| | | | |
|----------------------|---------------|------------------|--------------|
| Program #5257 | 6 wks | 6/11-7/21 | \$60 |
| Program #5258 | 7 wks | 7/23-9/8 | \$70 |
| Program #5259 | 13 wks | 6/11-9/8 | \$120 |

Strengthen & Tone

This low impact class will give you a total body workout to help strengthen, tone and improve flexibility & balance for a healthier you! A flexible body can reach, twist, and bend without stiffness, pain, or strain for a healthier you!

Bring an exercise mat and hand weights to each class.

18 yrs and up / 6 wks / \$50 Instructor Suzanne Dillow

Zion Church 215 E. Washington St., Charles Town

Program #5260 Tues/Thur, 6/12-7/19 10:00-10:50 am

18 yrs and up / 7 wks / \$55 Instructor Suzanne Dillow

Zion Church 215 E. Washington St., Charles Town

Program #5261 Tues/Thur, 7/24-9/6 10:00-10:50 am

Cardio Mix

Class offers a mix of mid to high level workouts including step aerobics, aerobics or interval training. Also, for a total body workout, there will be exercises to trim, tone and strengthen the body.

Bring an exercise mat and weights to each class.

18 yrs and up / 6 wks / \$40 Instructor Suzanne Dillow
Ranson Elementary

Program #5262 Mon/Wed, 6/11-7/18 6:40-7:30 pm

18 yrs and up / 7 wks / \$45 Instructor Suzanne Dillow

Ranson Elementary

Program #5263 Mon/Wed, 7/23-9/5 6:40-7:30 pm

Total Fitness

Get your total body workout in one class! This class (approximately 75 minutes) will include a cardio workout, exercises to strengthen and tone the body using hand weights, bands, and exercise ball. Relax at the end of the class, for 15 minutes with simplified yoga/pilates movements to help achieve a full range of body motion for a healthier you. Bring an exercise mat, hand weights, and exercise ball to each class (exercise ball is optional).

18 yrs & up / 6 wks / \$35 Instructor Suzanne Dillow
Ranson Elementary School

Program #5264 Sat, 6/16-7/21 8:30-9:45 am

18 yrs & up / 7 wks / \$40 Instructor Suzanne Dillow
Ranson Elementary School

Program #5265 Sat, 7/28-9/8 8:30-9:45 am

30-30-30

This 90 minute class targets a total body workout - combining a warm up, cardio workout, exercises to strengthen and tone the body, and stretching. Join us anytime during the 90 minute class for your workout.

Bring an exercise mat and hand weights to each class.

18 yrs & up / 6 wks / \$60 Instructor Suzanne Dillow
Blue Ridge Elementary School

Program #5235 Tu/Th, 6/12-7/19 4:30-6:00 pm

18 yrs & up / 7 wks / \$65 Instructor Suzanne Dillow
Blue Ridge Elementary School

Program #5236 Tu/Th, 7/24-9/6 4:30-6:00 pm

Teen & Adult

Parent & Child Crochet

Learn a new craft with your child this summer. Students age 13 to adult may attend alone. Children ages 8 – 12 must be accompanied by an adult. Basic Crochet stitch technique will be introduced in this class and students will receive yarn and a pattern for a small project. **There will be a supply fee of \$12 for each student which includes a tote bag, knitting needles, two types of yarn and assorted instruction sheets.** If you would like to contact the instructor prior to class to discuss your needs, please call 304-725-3172 (before 7 p.m. please).

8 & up / 4 wks / \$30 Instructor Judy Slusher
Wright Denny Intermediate—Library
Program #5223 Mon, 7/16-8/6 10:00 am-12:00 pm

Knit or Crochet for Charity

If you knit, crochet, or do any other needlecrafts and would like to use your time and talents to donate handmade items to local charities, this group will give you the opportunity to enjoy an afternoon of needlework while doing just that. Please bring your own knitting needles/crochet hooks/yarn/supplies to class. The only cost to you is your time, talents, and whatever yarn you can provide. There will be a variety of knit and crochet patterns and project ideas available. There may also be some donated yarn available at class. If you would like to speak with the facilitator prior to class please call 304-725-3172 (before 7 p.m. please).

Please Note: Some guidance will be provided but this class is not an instructional class.

14 yrs & up / 4 wks / FREE
Wright Denny Intermediate—Library
Instructor Judy Slusher
Program #5226 Tues, 6/19 12:00-2:00 pm
Program #5227 Tues, 7/17 12:00-2:00 pm

Intermediate Sewing and Quilting

If you have basic sewing skills, but want to expand your knowledge, this class is for you! Learn new techniques and improve your sewing skills with a pattern of your choice. **Students are to provide all their own sewing supplies and sewing machine.** Pattern suggestions from instructor are available.

15 yrs & up / 6 wks / \$60 Instructor Nancy Bender
Conference Room - Co. Maintenance Building in Bardane
(128 Industrial Blvd., Kearneysville, WV)
Program #5228 Thur, 7/12-8/16 7:00 pm-9:00 pm

Parent & Child Knitting

Learn a new craft with your child this summer. Students age 13 to adult may attend alone. Children ages 8 – 12 must be accompanied by an adult. The basic Knit, Purl, Cast on, and Bind off techniques will be introduced in this class and students will receive yarn and a pattern for a small project.

There will be a supply fee of \$14 for each student which includes a tote bag, knitting needles, two types of yarn and assorted instruction sheets.

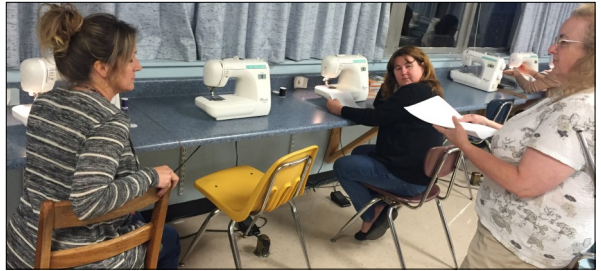
If you would like to contact the instructor prior to class to discuss your needs, please call 304-725-3172 (before 7 p.m. please).

8 & up / 4 wks / \$30
Wright Denny Intermediate - Library
Instructor - Judy Slusher
Program #5222 Mon, 6/11-7/9 10:00 am-12:00 pm
 (no class 7/2)

Complete your Own Knit/Crochet Project

This class is designed for students who know the basic knit or crochet stitches and would like to learn new techniques, need help in understanding a pattern or completing a project. Instructor will provide individualized attention while you refresh skills or learn new ones. If you would like to learn either Knit or Crochet and the class schedules for those classes do not work for you, please call the instructor at the following phone number to discuss your needs. Assorted patterns will be available. Please bring a project to work on or call 304-725-3172 (before 7 p.m. please) prior to class with any project ideas or questions.

14 yrs & up / 4 wks / \$30
Wright Denny Intermediate—Library
Instructor Judy Slusher
Program #5224 Mon, 6/11-7/9 12:00-2:00 pm
 (no class 7/2)
Program #5225 Mon, 7/16-8/6 12:00-2:00 pm



Men's Softball League

Jefferson County will be offering it's Men's Softball League this spring/summer. Games will start in April/May and run through June. If interested, or for more information contact Jason DeAngelo at jasonda35@gmail.com or 304-283-6904.

Ages 18 & up Leetown Park Games start in April/May

Adult Drop-In Late Night Soccer

Do you enjoy playing soccer? Come on our and join this in the fun of our Adult Drop-In Late Night Soccer at the Jefferson County Community Center! Pick-up games are played once each week.

18 yrs & up / \$6 per visit
Jefferson County Community Center
Wednesdays 9:00-11:00 pm

Adult Drop-In Volleyball

Do you enjoy playing volleyball? Come on our and join this in the fun of our Adult Drop-In Volleyball at the Jefferson County Community Center! Pick-up games are played once each week.

18 yrs & up / \$6 per visit
Jefferson County Community Center
Tuesdays 7:00-9:00 pm

Summer Outdoor

Movie Nights



DESPICABLE ME 3

March 30

Ranson Civic Center
Sponsored by: A.S.K Heating &
Air Conditioning



JUMANJI

April 27

Shepherdstown Middle School



COCO

May 25

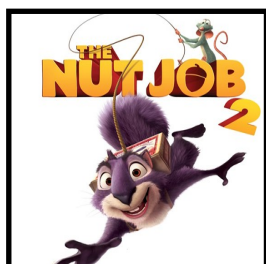
Sam Michael's Park
Sponsored by: Jefferson
Urgent Care



WRECK-IT-RALPH

June 8

Blue Ridge Primary School



THE NUT JOB 2

June 22

Bolivar Community Park



JUSTICE LEAGUE

June 30

Sam Michael's Park
after FIREWORKS!



PETER RABBIT

July 13

Page Jackson
Elementary



SHERLOCK GNOMES

July 27

Wright Denny
Intermediate School



THE INCREDIBLES

August 10

Sam Michael's Park



STAR WARS The Last Jedi

September 28

Ranson Civic Center
Sponsored by:
Jefferson Urgent Care



NIGHT OF THE LIVING DEAD

October 19

Sam Michael's Columns
Adults Only
Party in the Park



HOCUS POCUS

October 26

Wright Denny
Intermediate School

FREE ADMISSION!

Please support our concession stand at the movie events.
The proceeds help us bring fun, family events to our Parks!

Bring your chairs and blankets and join us in the park. All movies begin at sundown.
(The time the sunsets varies as the summer progresses—They usually begin between 8:45-9:30)

Day Camps for Little Ones

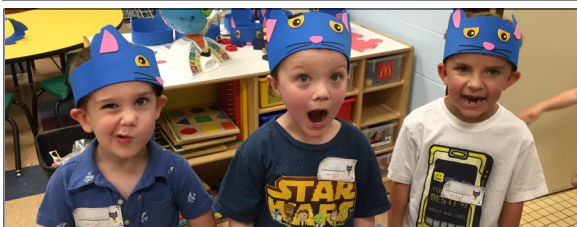
Paw Patrol Camp

Join the fun with Chase, Ryder, Marshall, Rubble, Skye, Rocky, and Everest. Your little ones will have a blast discovering a new hero each day.

3-6 yrs / 1 wk / \$69 Instructor Stacey Earl

Jefferson County Community Center

Program #5101 Mon-Fri, 6/4-6/8 9:00am-12:00pm



STEM Camp

Children will have a hand-on week of Science, Technology, Engineering, and Math activities!

4-8 yrs / 1 wk / \$69 Instructor Stacey Earl

Jefferson County Community Center

Program #5105 Mon-Fri, 6/4-6/8 1:00-4:00 pm

Program #5106 Mon-Fri, 8/6-8/10 9:00 am-12:00 pm

Storytime Favorites

Children will enjoy this fun camp that's centered around their favorite childhood stories. Enjoy stories from Curious George, Pete the Cat, Eric Carle, Elephant and Piggie, and more!

4-8 yrs / 1 wk / \$69 Instructor Stacey Earl

Jefferson County Community Center

Program #5102 Mon-Fri, 6/11-6/15 9:00 am-12:00 pm

Super Hero Camp

Enjoy a week long camp dedicated to all things superhero. Children will have fun with crafts, games and activities. Come dressed up as your favorite superhero as many days as you like.

3-6 yrs / 1 wk / \$69 Instructor Stacey Earl

Jefferson County Community Center

Program #5111 Mon-Fri, 6/18-6/22 9:00 am-12:00 pm

Star Wars Camp

Let the force be with you. Children will have fun with Star Wars themed crafts and games throughout the week.

4-8 yrs / 1 wk / \$69 Instructor Stacey Earl

Jefferson County Community Center

Program #5100 Mon-Fri, 6/18-6/22 1:00pm-4:00pm

Dr. Seuss Camp

Dr. Seuss is on the Loose! From *Cat in the Hat* to *Green Eggs and Ham* even Horton will bring a 'Who' if he can! We'll have so much fun with paint and glue; come along and see what you can do!

3-6 yrs / 1 wk / \$69 Instructor Stacey Earl

Jefferson County Community Center

Program #5107 Mon-Fri, 7/9-7/13 9:00am-12:00 pm

Wonderful World of Disney Camp

Join us as we explore the wonderful world of Disney through books, movie, & crafts. Each day we will explore one of our favorite Disney books and create crafts, snacks and games that go along with the theme. On Friday, we will enjoy popcorn and watch a favorite Disney movie and have our own Disney Parade!

4-8 yrs / 1 wk / \$69 Instructor Stacey Earl

Jefferson County Community Center

Program #5108 Mon-Fri, 7/23-7/27 9:00am-12:00 pm

Pinkalicious Camp

Join Pinkalicious and come along on many of her amazing adventures. Children will enjoy stories, crafts, and games. Campers can also dress up in their favorite princess attire.

4-8 yrs / 1 wk / \$69 Instructor Stacey Earl

Jefferson County Community Center

Program #5109 Mon-Fri, 7/23-7/27 1:00-4:00 pm

Trolls Camp

Join Poppy, Branch, Bridget, King Gristle and all the Trolls for a fun-filled week of adventure, stories, crafts & games.

4-8 yrs / 1 wk / \$69 Instructor Stacey Earl

Jefferson County Community Center

Program #5112 Mon-Fri, 7/30-8/3 9:00am-12:00pm

Fancy Nancy Camp

Have fun with stories, crafts, dressing up and so much more in this week long camp honoring this fabulous children's book character.

4-8 yrs / 1 wk / \$69 Instructor Stacey Earl

Jefferson County Community Center

Program #5110 Mon-Fri, 7/30-8/3 1:00-4:00 pm

Toddler Learning Camp

Introduce your toddler to the basics of the alphabet, numbers, colors and shapes through various crafts, stories and other activities. This is a great way to start your child in a preschool setting the fun way! Each camp will have a different theme so you can sign them up for one camp or both! Children should be walking but do not need to be potty trained. This camp is geared towards the younger campers.

1-3 yrs / 1 wk / \$69

Jefferson County Community Center

Program #5097 Mon-Fri, 6/18-6/22 9:00 am-12:00 pm

Program #5098 Mon-Fri, 7/16-7/20 9:00 am-12:00 pm

Program #5099 Mon-Fri, 8/6-8/10 9:00 am-12:00 pm

Children attending preschool camps must be potty trained or parent must stay on site.



**** Due to allergy concerns, we will no longer provide a snack at Preschool Summer Camps. Please send a snack for your child each day!**

Toddler Learning Time

Introduce your child to the basics of alphabet, numbers, colors and shapes through various crafts, stories and other activities. Our program is designed for children age one and a half to three years of age, and based on a commitment to offering children an educationally sound and happy preschool experience where they can learn about themselves and about the world around them. We know the preschool experience is a first and very important step in a long education process, and we will strive to make it as fun and educational as possible. Toddler Learning Time is a tuition based program and parents will be required to make monthly payments.

*First payment will be made on August 1st and will include (September's tuition as well as \$30 registration fee and \$30 materials fee).
Registration fee and materials fee are non-refundable.*

To obtain information and registration packet please email Stacie Tanski at standski@jeffersoncountywv.org

2 yrs / \$90 per month Instructor Stacie Tanski
Jefferson County Community Center
Mon/Wed/Fri 9:00 am-10:30 am

2 yrs / \$90 per month Instructor Stacie Tanski
Jefferson County Community Center
Mon/Wed/Fri 11:00 am-12:30 pm

16 mos. (must be mobile) / \$80 per month
(Children must be 16 mos. on or before September 1 to enroll)
Instructor Stacie Tanski
Jefferson County Community Center
Tue/Thur 9:00 am-10:30 am

3 yrs / \$80 per month Instructor Stacie Tanski
Jefferson County Community Center
Tue/Thur 11:00 am-12:30 pm



Play and Learn Preschool

Play & Learn Preschool's mission is to provide children ages 3-5 with a well-rounded program in a positive, safe, and supportive environment. Our mission is achieved by a professional and dedicated staff that will guide your child through a variety of meaningful and interesting experiences, which will help to develop your child's cognitive, social, and physical skills through appropriate activities. Your child will have fun learning through play.

Learning Outcomes include:

- Enhance self esteem & individuality
- Build friendships
- Develop respect & promote teamwork
- Encourage reading readiness
- Strengthen listening & speaking skills
- Provide opportunities for self-expression
- Learn to get along with & respect others
- Encourage creativity

Children must be fully toilet trained prior to the first day of class. Use of disposable undergarments are not permitted.

*First payment will be made on August 1st and will include (September's tuition as well as \$50 registration fee and \$50 materials fee).
Registration fee and materials fee are non-refundable.*

To obtain information and registration packet please email Holly Junkin at hjunkin@jeffersoncountywv.org

4-5 yrs / \$180 per month Instructor Holly Junkin
Jefferson County Community Center
Mon/Wed/Fri 9:00 am-11:30 am

4-5 yrs / \$180 per month Instructor Holly Junkin
Jefferson County Community Center
Mon/Wed/Fri 1:00 pm-3:30 pm

3-4 yrs / \$130 per month Instructor Holly Junkin
Jefferson County Community Center
Tue/Thur 9:00 am-11:30 am

3-4 yrs / \$130 per month Instructor Holly Junkin
Jefferson County Community Center
Tue/Thur 1:00 pm-3:30 pm

Fall Preschool Preview



NEW Comfort System Being INSTALLED Here By
SHENANDOAH
Air Conditioning & Heating, Inc.
304 • 728 • 3531 • SHENANDOAHAIR.COM

Club Volleyball Tryouts begin in November



ShenandoahSurge.com

Kid's Closet Connection

Jefferson County, WV



America's Top
Drawer Children's
Consignment Sale
304-279-7374 for more details

www.KidsCloset.biz

Shop, Sell, Volunteer



www.RiverTrail.com

If you would like to be a sponsor, please contact Terri Burhans at tburhans@jcprc.org or call 304-728-3207 for more information.



On your mark...Get set...

GO!



SATURDAY
October 20, 2018

RUNNERS & WALKERS 10:30 AM START

Entry Fee INFO:

Early Registration Fee BY Oct 12 / \$25 with t-shirt
AFTER Oct 12 / \$30 with no guarantee of a t-shirt

- PRESENTED BY -
THE WELLNESS CENTER
at Berkeley Medical Center

For more info or to register
www.appletrample.com

Jefferson County Parks & Recreation ~ 26 ~ Register for classes at: www.jcprc.org

JEFFERSON COUNTY PARKS AND RECREATION COMMISSION FACILITY AND RENTAL FEES

| Facility /Equipment | Base Fee (Non Residents) | Additional Fees | Discount Fee (County Resident) | Additional Fees | Jefferson County Non-Profit Mon-Thurs Only: Excludes Holidays |
|---|---|--|---|--|---|
| Pavilions | | | | | |
| Sam Michaels Park Mason Pavilion | \$135 per day | \$35 Kitchen Addl. Picnic Tables \$7 ea. | \$125 per day | \$30 Kitchen Addl. Picnic Tables \$5 ea. | 50% Discount* |
| Veteran's Pavilion | \$135 per day \$93 per day Veteran's Rate | None | \$125 per day \$93 per day Veteran's Rate | None | 50% Discount* |
| Leetown Park Pavilion | \$100 per day | None | \$90 per day | None | 50% Discount* |
| Morgan's Grove Pavilion | \$135 per day | \$35 Kitchen | \$125 per day | \$30 Kitchen | 50% Discount* |
| Mount Mission Park | \$135 per day | \$35 Kitchen | \$125 per day | \$30 Kitchen | 50% Discount* |
| Sam Michaels Community Center | | | | | |
| Full Gym | \$110 per hour | \$1 Chairs \$3 Tables | \$100 per hour | \$1 Chairs \$3 Tables | 50% Discount* |
| Half Gym | \$70 per hour | \$1 Chairs \$3 Tables | \$60 per hour | \$1 Chairs \$3 Tables | 50% Discount* |
| Activity Room | \$50 per hour | None | \$40 per hour | None | 50% Discount* |
| Dance Room | \$30 per hour | None | \$20 per hour | None | 50% Discount* |
| Athletic Fields/Facilities (Leagues - Including Little League, Travel Leagues, etc. must contact JCPRC at 304-728-3207 for pricing.) | | | | | |
| Baseball/Softball Fields | \$25 per hour | Lights \$10 p/h | \$20 per hour | Lights \$10 p/h | |
| Soccer Fields | \$25 per hour | None | \$20 per hour | None | |
| Tennis Courts | \$10 per hour | None | \$10 per hour | None | |
| Special Event Facilities **/Services | | | | | |
| Festival Field | \$500 per day base price | None | \$500 per day base price | None | |
| Dog Park | \$250 per day | None | \$250 per day | None | |
| Tournament Field (8am-8pm) | \$200 per event | Kitchen \$50 | \$200 per event | Kitchen \$50 | |
| Tournament Field - All Nighter | \$250 per event | Kitchen \$50 | \$250 per event | Kitchen \$50 | |
| 5K Course (EMS Required onsite) | \$150 per event | None | \$150 per event | None | |
| The Columns Event Facility | \$500 - 3 day rental | None | \$500 - 3 day rental | None | |
| Camping Sites (Moulton Park Only) | \$20 per day | None | \$20 per day | None | |
| Inflatable Obstacle Course*** | | | \$75 - 2 hours \$150 - Daily | None | |
| Inflatable Mickey Park*** | | | \$65 - 2 hours \$130 - Daily | None | |
| Standard Moon bounce*** | | | \$55 - 2 hours \$110 - Daily | None | |
| Giant Slide*** | | | \$75 - 2 hours \$150 - Daily | \$150 w/water -2hrs | |
| Nerf War Course | | | \$25 - 2 hours | None | |
| Air Hockey Table | | | \$25 - 2 hours | None | |
| Inflatable Screen (onsite only) | | | \$100 per use | None | |
| *Jefferson County Based Non-Profit Organizations must provide a 501C3 verification to receive a discounted rate. 50% rentals are only available Mon - Thurs and do not include holidays. | | | | | |
| **Events with an expected attendance of over 100 people must fill out a special events application. | | | | | |
| **The above rental rates apply to personal use. Any renter utilizing park facilities and charging fees must pay 15% of their gross profits to the Jefferson County Parks and Recreation Commission and event must be approved by JCPRC. | | | | | |
| ***Inflatables require a recreation attendant to be present @\$12 per hour | | | | | |

Park & Facility Information

Park Shelter

Reservation Info:

Facility Use Permits are available at the Parks & Recreation Office, 235 Sam Michael's Lane, Shenandoah Junction, WV 25442

Reservations are taken beginning the first working day of January for the current year. They can be made between 8:30 a.m.-5 p.m. at the JCPRC Office.

Reservation fees and deposits vary depending on location. All pavilion fees, permit fees, and deposits are due at the time of reservation.

Shelters are available for public use, free of charge, on a first-come, first-serve basis if they are not already reserved.

Visit the JCPRC Website at www.jcprc.org for more information and current pricing.



Sam Michael's Park-

The entrance to this one hundred and thirty acre park is located on Job Corps Road, near Harpers Ferry. The private setting of this park offers the perfect place to host weddings, wedding receptions, and reunions and other family events. The well shaded **Mason Picnic Pavilion** offers an adjacent kitchen and restroom facility. The new **Veterans Memorial Pavilion** offers picnic tables, bathrooms and close proximity to the large playground area and Jefferson County Community Center. The sparse acreage lends well to community events such as concerts, dog shows, festivals, and more. Nestled within the park are little league fields, home of Jefferson County Parks and Recreation; Community Center, athletic fields, playgrounds, horseshoe pits, and a sand volleyball court.

Sam Michael's Park Wedding Venue -

Sam Michael's original home site, located in Sam Michael's Park, is a private, picturesque place available for weddings & receptions.

Leetown Park-

Located one mile East of Leetown, on off of old Leetown Pike, this ten-acre park has been a gathering for softball games since the 1970's. On the park grounds are lighted softball fields, tennis courts, a playground, **picnic pavilion**, horse shoe pits, concession stand and new renovated restroom facility. This park offers a great place to host your company's softball league or to simply relax and just play a pick-up game of baseball. Ball fields available for reservations.

South Jefferson Park-

Located on Route 1, between Summit Point and Middleway, this seventy-one acre park accommodates six baseball fields, tennis courts, concession stand, a playground, and basketball court. It's a great place to relax and spend a day in the park.

Moulton Park-

On the shore of the Shenandoah River, just North of the Bloomery Bridge, this half-mile of river frontage features camping and other recreational opportunities. The well-shaded, quiet hammock of foliage creates inviting habitat for squirrels, birds, and waterfowl. A public boat ramp gives access for fishing the Shenandoah River. Camping is restricted to permit only, please call the Jefferson County Parks and Recreation office at (304)-728-3207 for information.

Bolivar Nature Park-

Located on primrose alley, near Harpers Ferry, this 7-acre park is filled with plenty of botanical delights. A walking trail allows you to stroll through the park where you can relax on a bench and watch the deer graze. The newly updated gazebo and picnic tables are available for your convenience at the parks entrance.

Morgan's Grove Park-

With over twenty acres of shade trees, meadows, playgrounds, and spring-fed streams, this popular park serves as an idyllic site for community gatherings and events. A 1500 square foot covered **picnic pavilion** with a full kitchen and restroom facility offers the perfect place to host family events as well as corporate functions. Other features of the park include playground equipment, soccer fields, sand volleyball, horseshoe pits, and a 3/4 mile walking trail.

Mount Mission Park -

This picturesque three and one-half acre park is located on Mission Road, near Shannondale. Shaded by oak and maple trees, the **picnic pavilion**, complete with restroom and kitchen facilities, has played host to family reunions, weddings, and birthday parties. An old church on site, a newly renovated playground, new basketball hoop, horseshoe pits, sand volleyball and a baseball diamond make this park a convenient site for neighborhood get-togethers.

James Hite Park -

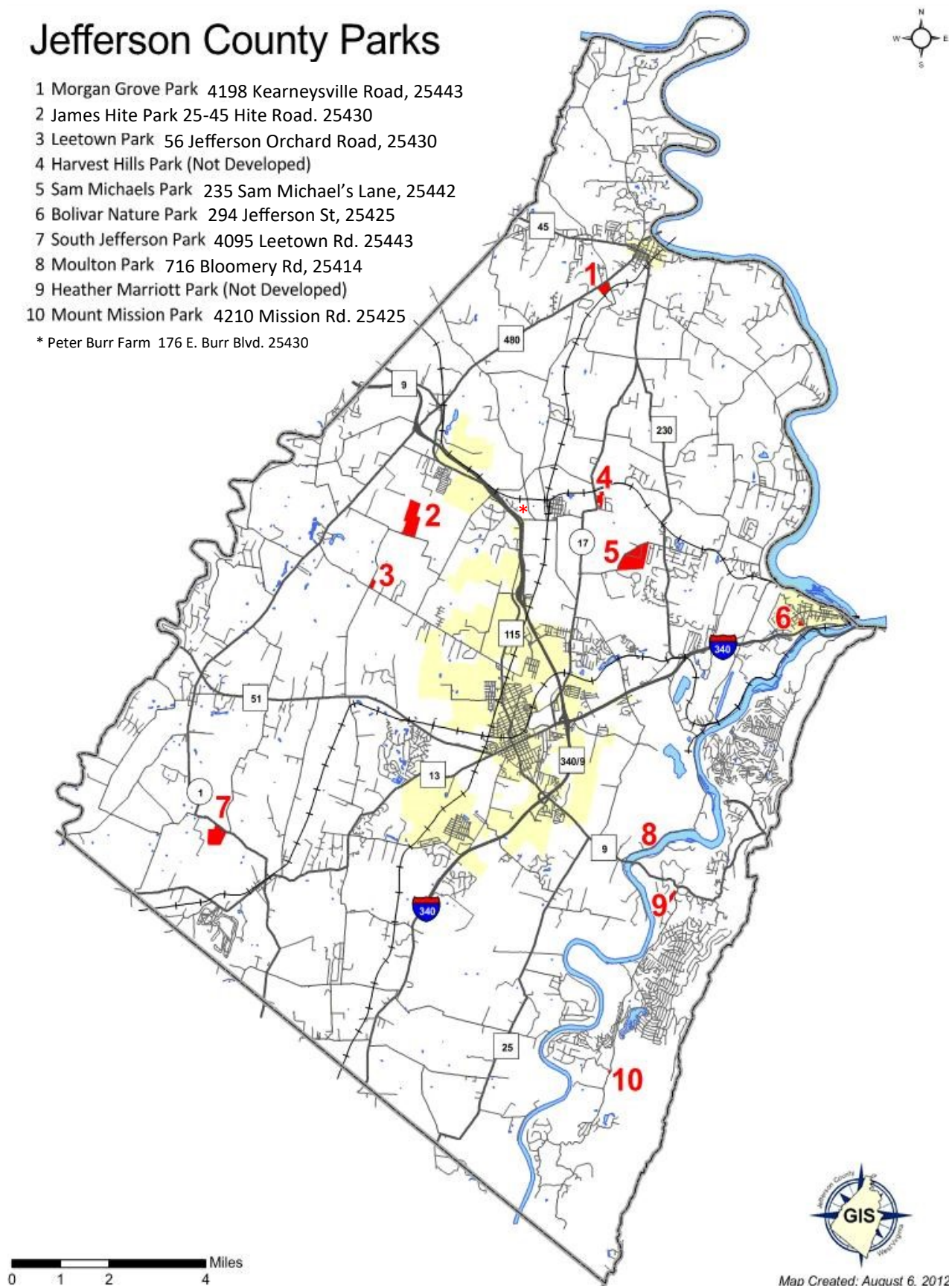
Our newest 119-acre park that includes a 2-mile walking trail, soccer and football fields. Future plans include picnic pavilions, playground, dog park and softball fields.

Peter Burr Farm -

The oldest wood frame structure in West Virginia, Peter Burr Farm is owned and maintained by the Jefferson County Historic Landmarks Commission. They offer events and workshops to the public periodically though out the year. More information can be found at: <http://www.jeffersoncountyhlc.org/>

Jefferson County Parks

- 1 Morgan Grove Park 4198 Kearneysville Road, 25443
 - 2 James Hite Park 25-45 Hite Road. 25430
 - 3 Leetown Park 56 Jefferson Orchard Road, 25430
 - 4 Harvest Hills Park (Not Developed)
 - 5 Sam Michaels Park 235 Sam Michael's Lane, 25442
 - 6 Bolivar Nature Park 294 Jefferson St, 25425
 - 7 South Jefferson Park 4095 Leetown Rd. 25443
 - 8 Moulton Park 716 Bloomery Rd, 25414
 - 9 Heather Marriott Park (Not Developed)
 - 10 Mount Mission Park 4210 Mission Rd. 25425
- * Peter Burr Farm 176 E. Burr Blvd. 25430



Payments & Fees:

Please make your check(s) payable to: **Jefferson County Parks & Recreation.**

A \$25 fee will be charged for all returned check and declined credit cards.

Incomplete registrations cannot be processed—full payment must accompany registration.

A \$5 out-of-county fee will be charged to any person not living in Jefferson County.

A \$5 late fee will be charged if registration is received after the program starts.

JCPRC is not responsible for lost, late, or misdirected mail.

Registration is for the program, not attendance—no make ups, refunds or credits will be offered for missed classes.

Age Policy:

Program participants must be the advertised age **before** the program starts.

Scholarships:

Scholarships are available for some programs. Contact Brenda at the JCPRC (304) 728-3207 or email bwhittington@jcprc.org.

Cancellation Policy:

Programs may be cancelled due to insufficient registration, school closings, or inclement weather. Call (304) 728-9044 in case of inclement weather.

Mark Your Calendar:

NO REMINDERS WILL BE SENT. You will only be notified if there is a problem processing your registration or if the class is cancelled.

Media/Photography:

The JCPRC reserves the right to take pictures at all events, activities, and programs. Pictures may be displayed in future commercials, brochures and web publications. Parents/children cannot take photos during classes without permission from the instructor and/or other parents of registered participants.

Attention Parents:

JCPRC instructors or staff are not responsible for your child prior to or after class time.

It is the responsibility of the parent/guardian to notify JCPRC staff of any medical conditions/special needs of a child prior to the start of class.

Discipline Policy:

The JCPRC has a discipline policy for recreation programs/facilities. In the event the participant is asked to leave a program/facility, no refund will be issued.

Trips Alcohol Policy:

We strive to have a family atmosphere on our trips. If you choose to drink while on our trips, please do so in a responsibly and make arrangements to have a designated driver for your trip home from the bus drop off area.

Refund Policy:

After initial registration, refund requests must be submitted in writing at least five working days prior to the start of the program and are subject to a \$10 service charge. No refunds or credit will be given less than five days prior to, or after the first day of the class or program—NO EXCEPTIONS. Monetary refunds will only be given due to the department's cancellation of a program. If insufficient registration causes a program to be cancelled, participants will receive a REFUND or CREDIT within one month of the program cancellation. For any program fee under \$20, no refunds will be processed, only credit to JCPRC accounts will be issued.

JCPRC Commission

The Jefferson County Parks and Recreation Commission meets at 7:00 pm every third Wednesday of each month, except August and December, at the Jefferson County Community Center, located at Sam Michael's Park. The JCPRC is always open to input from citizens in the community for ideas or programs that may be beneficial to the county. Call the JCPRC office at (304)728-3207 for more information or to request to be put on the agenda for an upcoming meeting.

Community Center - Daily Information

Facility Hours

| | |
|------------------------------|----------------|
| Monday-Friday | 8:00am-8:00pm |
| Office Hours (Monday-Friday) | 8:00am-6:00pm |
| Saturday | 10:00am-6:00pm |
| Sunday | 12:00pm-6:00pm |

Closures Observed:

| | |
|---------------------------|--------|
| Memorial Day - May 28 | CLOSED |
| Independence Day - July 4 | CLOSED |
| Labor Day - Sept. 3 | CLOSED |

In the event of inclement weather, the JCCC may open late or close early. Please call the cancellation line before driving out.

Cancellation line:
(304) 728-9044

Facility Daily Fees

| Age | Daily | 20 visit Punch | Yearly Pass |
|----------------------|--------|----------------|-------------|
| Youth (6-18 Years) | \$2.00 | \$30.00 | \$150.00 |
| Adults (19-59 Years) | \$2.00 | \$30.00 | \$150.00 |
| Senior Adults (60+) | \$1.00 | \$15.00 | \$100.00 |

JCCC Fees: Fees provide access to the fitness room, open gym and indoor walking track. Punch Passes have no expiration date. Memberships and Punch Passes cannot be used toward programs. Additional fees apply for indoor playground.

OOPS!

JCPRC staff has made every effort to prepare this activity guide as accurately as possible. However, errors can occur. Circumstances may require that adjustments be made to programs, fees, schedules, etc. JCPRC staff reserves the right to make any such adjustments. We apologize for any inconvenience these errors or adjustments may cause.

Registration is Easy! 5 EASY WAYS TO SIGN UP!



Online Registration

Go to www.jcprc.org
Pay with American Express,
Discover, VISA or MasterCard
anytime that's convenient for you!



Fax-In

304-728-9746
Fax form, including credit card
number, exp. date and 3 digit CSC.
Call to confirm receipt of fax. time
that's convenient for you!



Walk-in

Jefferson County Community Center
235 Sam Michael's Lane,
Shenandoah Junction, WV 25442
Monday thru Friday, 8am-6pm.



Phone-In

304-728-3207
Pay with American Express,
Discover, VISA or MasterCard,
Monday thru Friday, 8am -6pm.
Phone registration takes time.
Especially for new customers creating
a new account. Please be patient.
You can save time by registering online.



Mail-In

Fill out a registration form.
Mail it with payment to
235 Sam Michael's Lane,
Shenandoah Junction, WV 25442

| | | | | | | |
|---|------------|---|--------------------|---|---|-------------------------|
| PARENT | | | | | HOME | () |
| ADDRESS | | | | | WORK | () |
| CITY | | STATE | | ZIP | | CELL () |
| EMAIL | @ | | | | | |
| ALLERGIES OR MEDICAL CONDITIONS: <small>List Participant and any allergies or medical conditions:</small> | | EMERGENCY CONTACT: _____ <small>(not yourself—this person will be contacted IF we cannot reach the person listed above)</small> | | | | |
| | | RELATION: Parent Grandparent Aunt/Uncle Friend Neighbor Other: _____ | | | Phone | () () |
| PARTICIPANT NAME | DOB | PROGRAM # | CLASS TITLE | | T-SHIRT SIZE <small>(if applicable)</small> | FEE |
| | / / | | | | | \$ |
| | / / | | | | | \$ |
| | / / | | | | | \$ |
| | / / | | | | | \$ |
| | | | | | TOTAL DUE | \$ |
| PAYMENT OPTIONS | | For Office Use | | REQUIRED CSC CODE: _____ | | |
| Rec'd by _____ Date ____/____/____ | | Cash Check # _____ \$ _____ Other: _____ | | | | EX Date: ____/____/____ |
| I/WE HAVE READ THE BELOW PARTICIPANT WAIVER AND RELEASE AND SIGN IT VOLUNTARILY: | | | | Credit Card/Participant Waiver Authorization Signature: X _____ | | |

We, the staff of the Jefferson County Parks and Recreation Commission (JCPRC), recognize our obligation to make our students and their parents fully aware of the inherent risks and hazards associated with sports & recreational activities that we offer. Students may suffer injuries, including, but not limited to minor injuries such as bruises and more serious injuries such as broken bones, dislocations, muscle pulls and stitches. There are many other risks of injury including catastrophic injuries such as permanent paralysis or even death from back, neck or head injuries which may arise due to participation in this activity. JCPRC insists that all students and their parents agree to abide by all of the safety rules and policies of JCPRC. JCPRC, its coaches, volunteers, instructors and staff members will not accept responsibility of injuries sustained by any participant while participating in our programs. I hereby consent to have my child participate in programs offered by the JCPRC. I have read the above information and am now fully aware of the hazards and risks associated and the distinct possibility of injuries that my child may suffer as a result of participation in the sport or activity. I realize it is not possible to specifically list each and every individual injury risk, and I voluntarily assume all the risks normally incident to the nature of the activities. It is hereby agreed that I, my executors, or other representatives waive and release all rights and claims for damages that I may have individually, or that my executors or other representatives may have on my behalf, or on behalf of my child, against JCPRC and/or Jefferson County Commission, their representatives, whether paid or volunteer, for any injuries or damages that my child sustain in connection with programs or other activities related to the JCPRC. I also understand that any injury incurred and the resulting medical expense from that injury will be my responsibility and JCPRC will not be responsible for payment of any related expenses. Furthermore, it is the responsibility of the parent/guardian to notify JCPRC staff of any medical conditions/special needs of a child prior to the start of class. JCPRC, instructors, and staff are not responsible for your child prior to or after class time. I acknowledge that I have read and fully understand the information on registration guidelines and the refund policy. I realize inherent risks could be involved in these programs. Therefore, I shall not hold the JCPRC, Jefferson County Commission or their employees liable for injuries that might occur during these supervised programs.



TRANSFORM YOUR SUMMER FROM ORDINARY TO EXTRAORDINARY!

July 30-August 3

9:00am-3:00pm

Ages 6-12

Wright Denny Intermediate

Program #5195

Cost: \$255



We are very excited to offer this STEM camp opportunity! Kids will enjoy this fun and enriching camp where they will problem-solve, invent, explore and analyze. The critical thinking and communication skills that children gain through STEM enrichment at Camp Invention will serve them for a lifetime. These are the 21st-century skills that are essential for personal and professional success, now and in the future.

Register online
www.jcprc.org
 or call 304-728-3207



235 Sam Michael's Lane

Shenandoah Junction, WV 25442

Phone: (304) 728-3207 Fax: (304) 728-9746

Email: Info@jcprc.org Website: www.jcprc.org

Return Service Requested