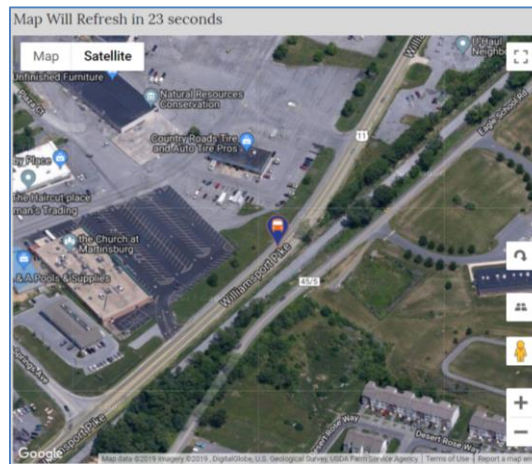




Transit Analysis And GIS



Matt Mullenax, GISP
Hagerstown/Eastern Panhandle MPO
EPan GIS Users Group Meeting – 9/11/19



Presentation Overview

- ❑ What is HEPMPO?
- ❑ Transit Needs Analysis
- ❑ Growth Projections
- ❑ Transit Gap Analysis



What is HEPMPO?

- Urbanized area with population > 50,000.
- Administers the metropolitan transportation planning process in the HEP region.
- Funded - 80% Federal, 10% State, 10% Local.
- Comprised of Interstate Council, Technical Advisory Committee and Staff.
- HEPMPO is responsible for:
 - Long Range Transportation Plan (LRTP)
 - Transportation Improvement Program (TIP)
 - Unified Planning Work Program (UPWP)
- One of eight MPOs in West Virginia.

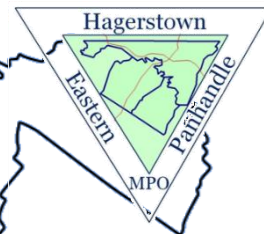


BHJ-MPC
 Brooke Hancock Jefferson
 Metropolitan Planning Commission

Belomar Regional Council

WWW
 www.triplew.org

MMMPO
 morgantown monongalia
 metropolitan planning organization



KYOVA
 INTERSTATE PLANNING COMMISSION

Regional
 Intergovernmental
 Council

**FAYETTE/RALEIGH
 METROPOLITAN PLANNING
 ORGANIZATION**

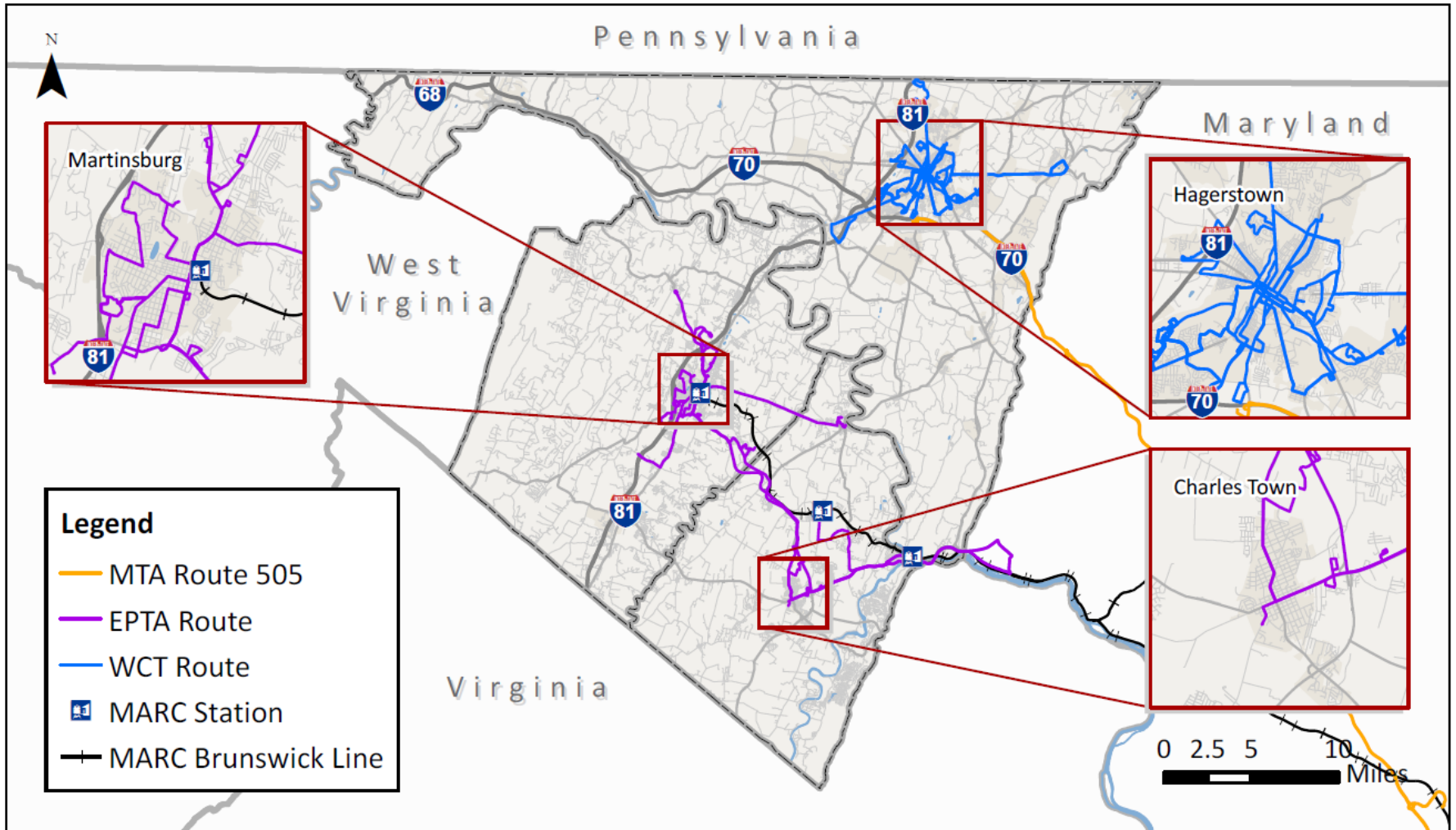


Presentation Overview

- ❑ What is HEPMPO?
- ❑ **Transit Needs Analysis**
- ❑ Growth Projections
- ❑ Transit Gap Analysis



Transit Services In HEPMPO Region





Transit Needs Analysis

**All-Day
Service
Need**

**Peak
Service
Need**





All-Day Service Need

Transit Oriented Population Index

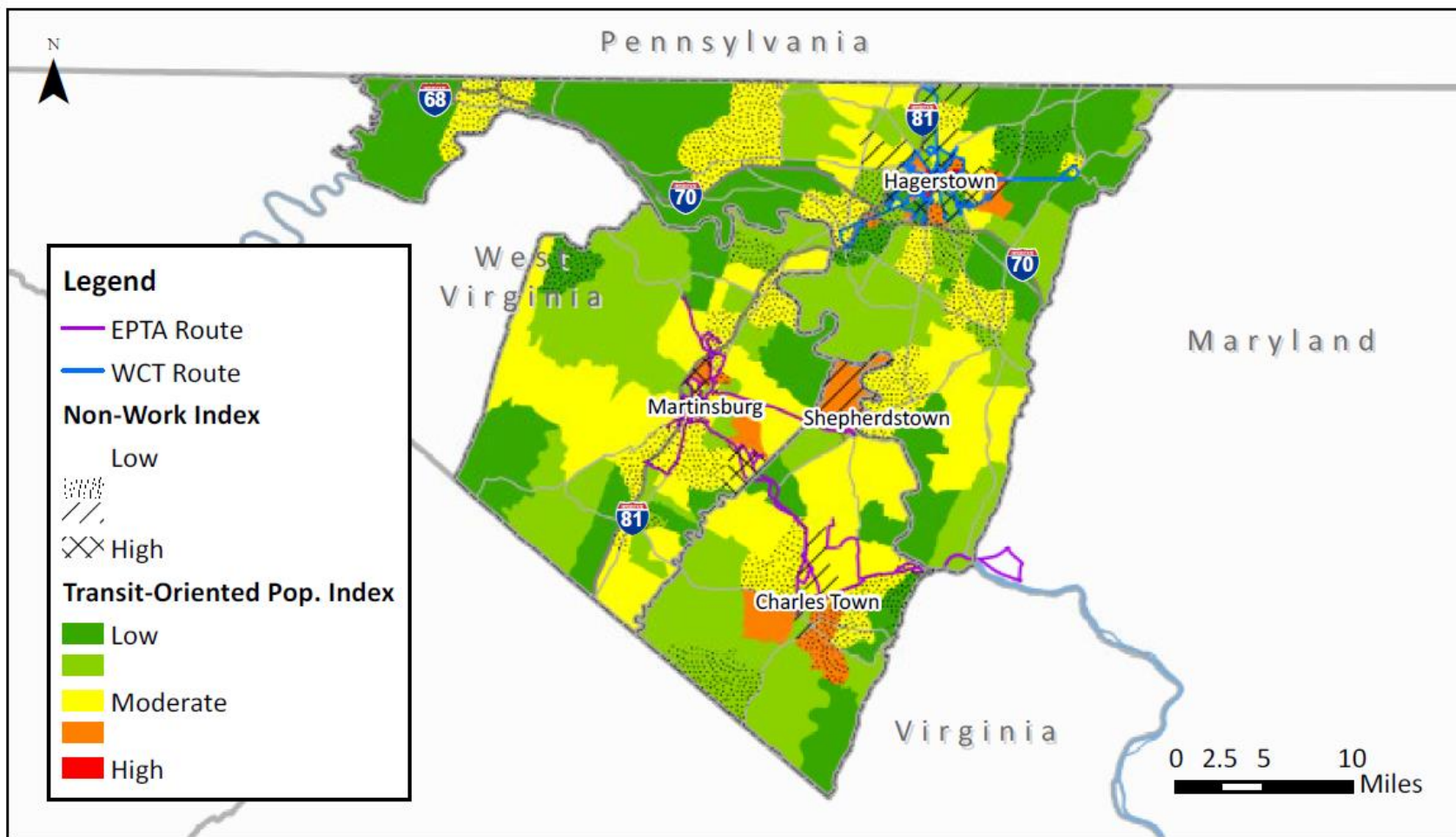
- Population
- Age
- Households
- Income
- Vehicle Ownership
- Disabled Person

Non-Work Index

- Retail/Restaurant
- Recreation
- Healthcare/Social Assistance
- Education
- Government



All-Day Transit Index





Peak Service Need

Commuter Index

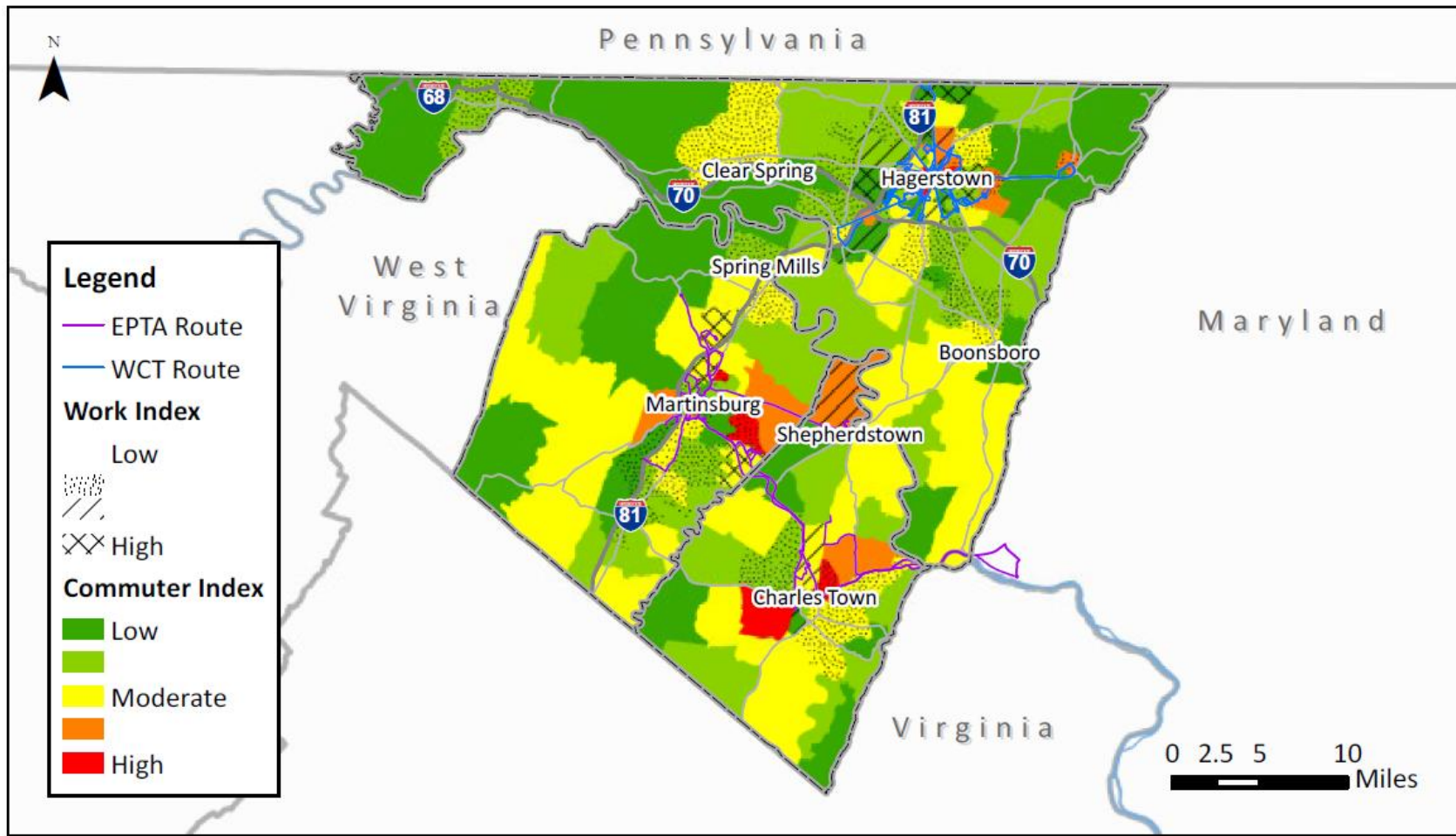
- Labor Force
- Commute Mode

Workplace Index

- Employment

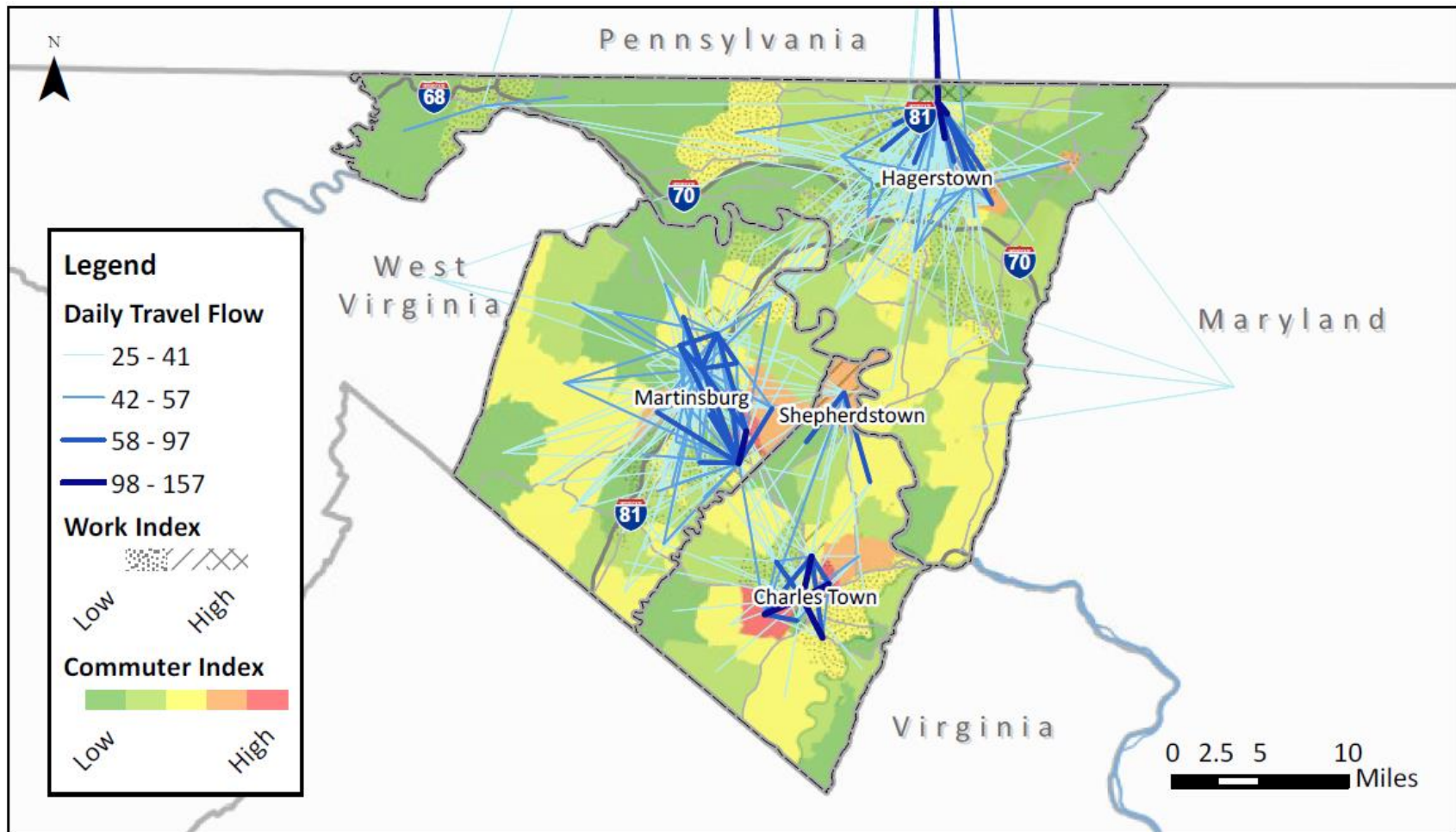


Peak Service Transit Index





Current Work Travel Flow Analysis



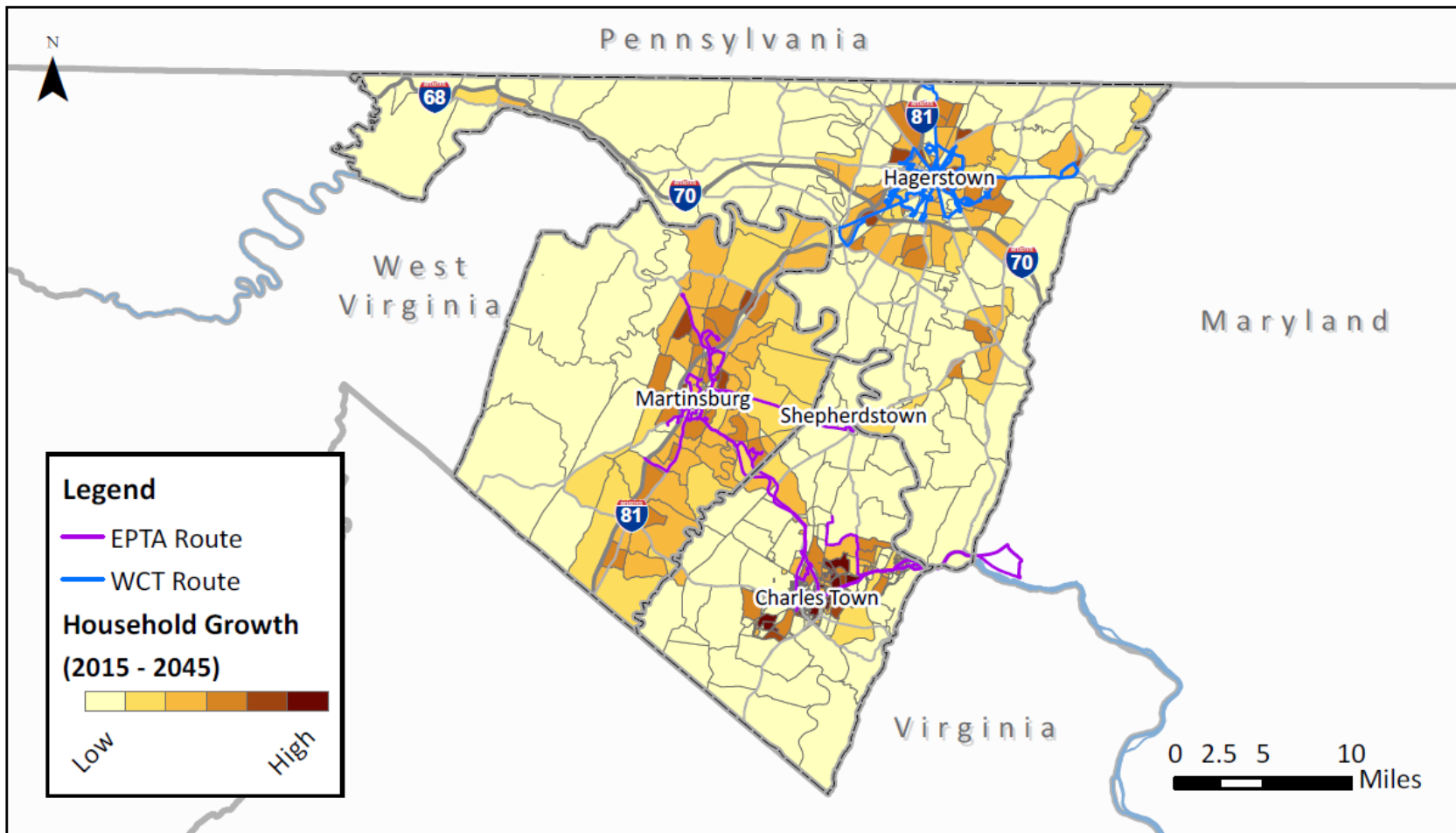


Presentation Overview

- ❑ What is HEPMPO?
- ❑ Transit Needs Analysis
- ❑ **Growth Projections**
- ❑ Transit Gap Analysis

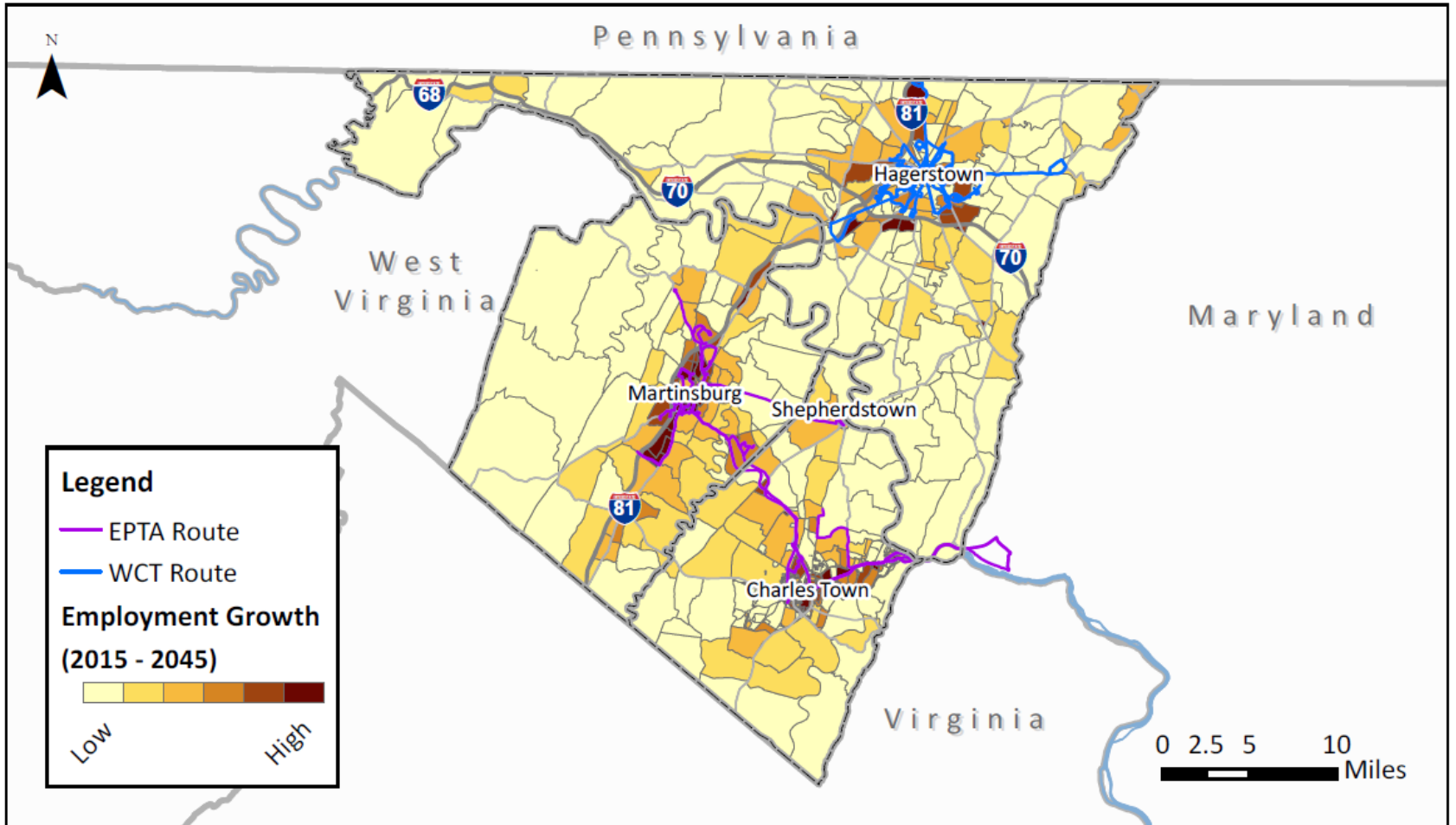


Household Growth 2017-2045





Employment Growth 2017-2045





Presentation Overview

- ❑ What is HEPMPO?
- ❑ Transit Needs Analysis
- ❑ Growth Projections
- ❑ **Transit Gap Analysis**

Transit Gap Types

1) **Geographic** - areas with demonstrated transit need but no transit service

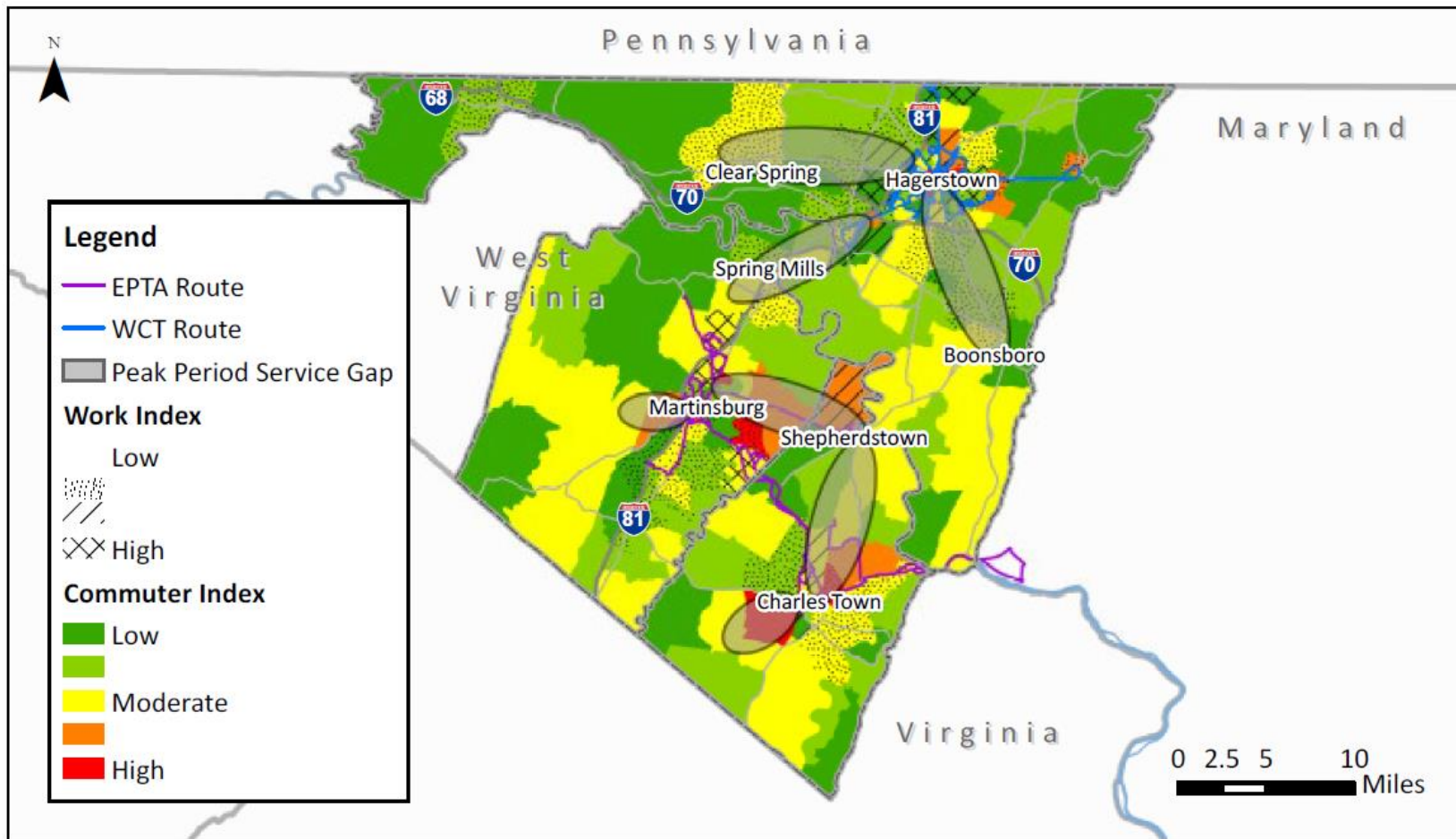
2) **Connection** - connection with a demonstrated transit need but no direct transit service between the two points

3) **Service Level** - existing route with inadequate transit service levels (headways or span of service) based on demand



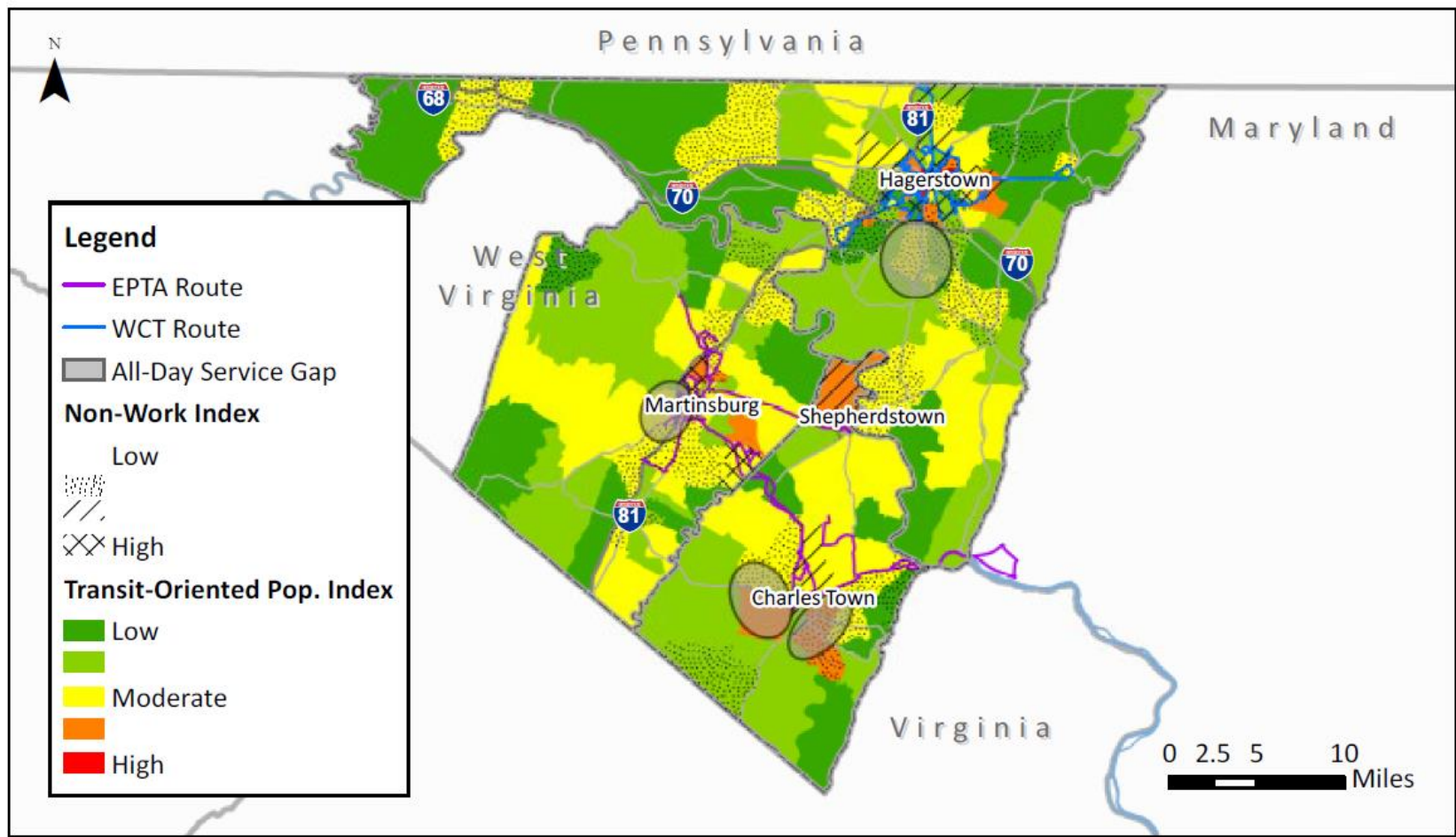


Peak Coverage and Connection Gaps



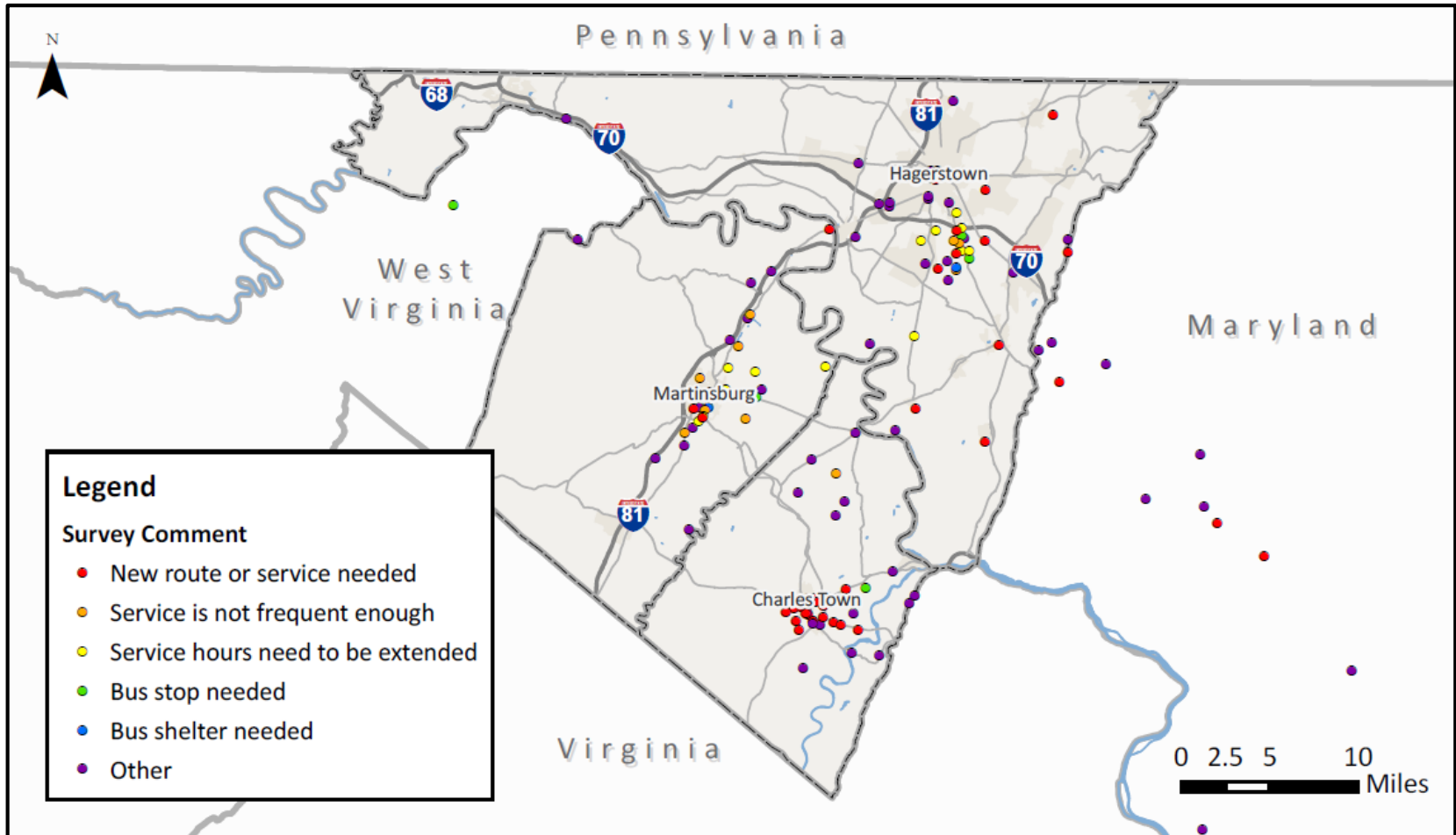


All-Day Coverage and Connection Gaps



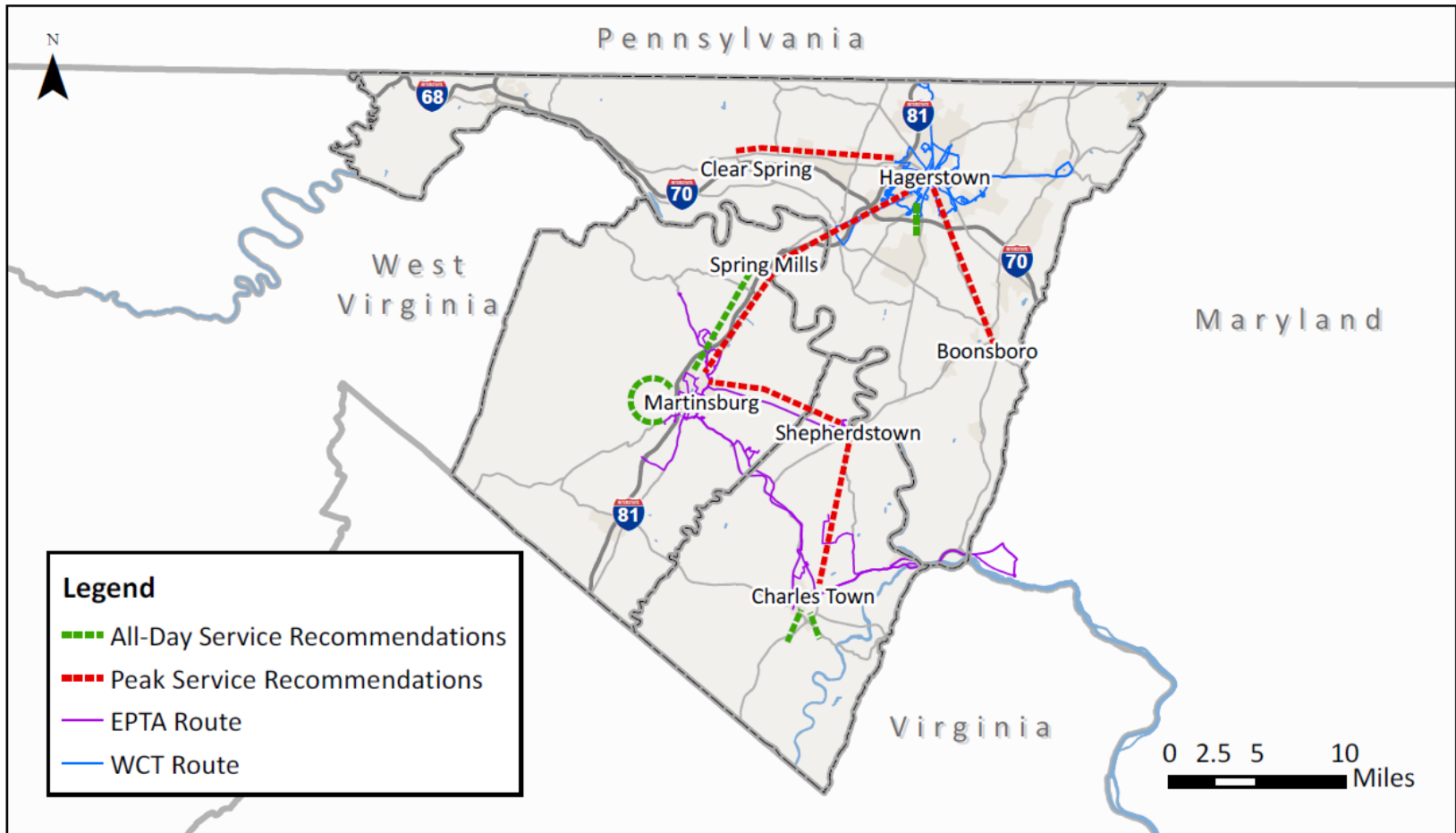


Summary of Public Input





Recommendations to Fill Gaps



Thank you!

