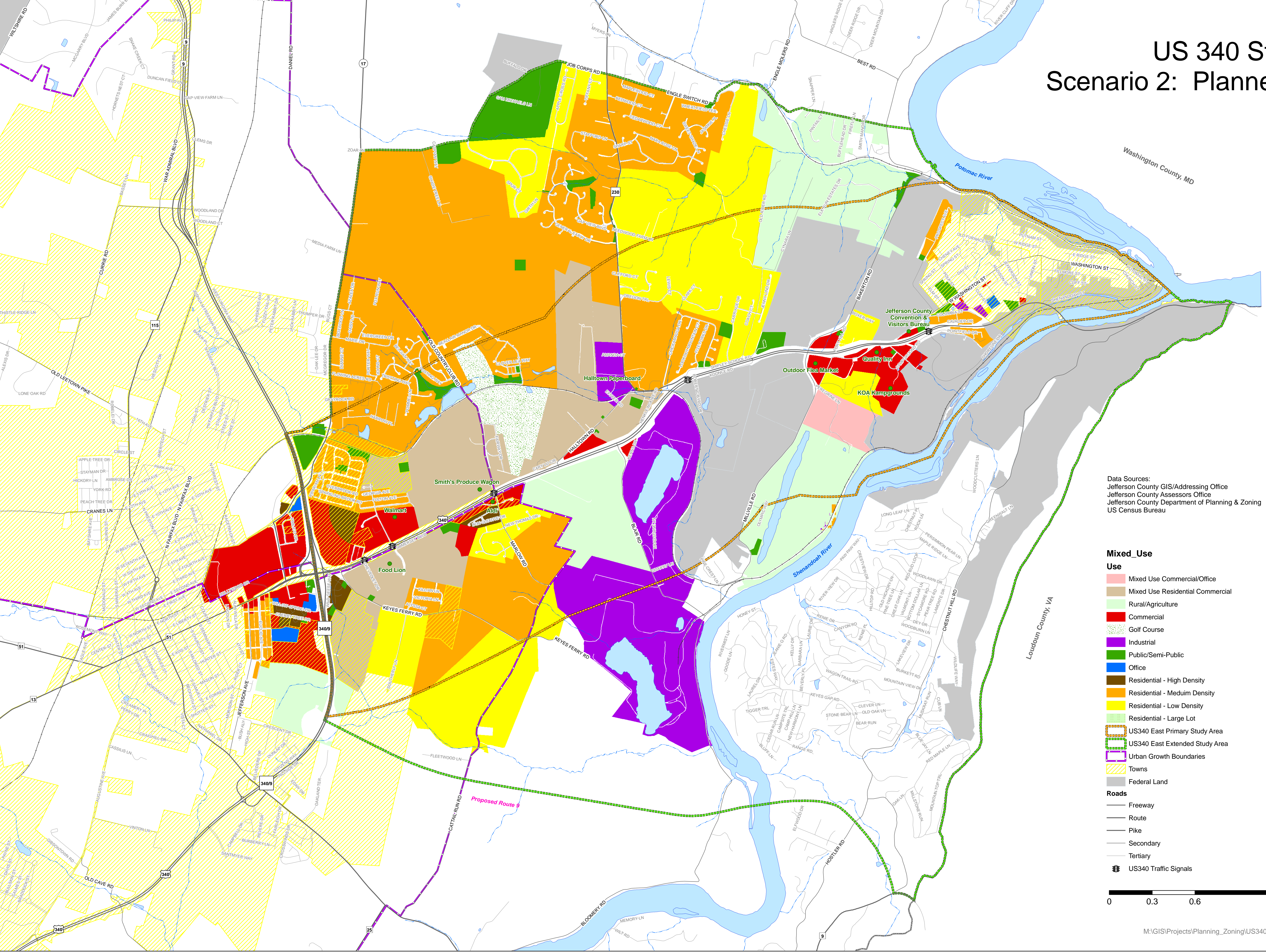


US 340 Study Scenario 2: Planned-Mixed Use



Map Created: September 14, 2011

Data Sources:
 Jefferson County GIS/Addressing Office
 Jefferson County Assessors Office
 Jefferson County Department of Planning & Zoning
 US Census Bureau



- Mixed_Use Use**
- Mixed Use Commercial/Office
 - Mixed Use Residential Commercial
 - Rural/Agriculture
 - Commercial
 - Golf Course
 - Industrial
 - Public/Semi-Public
 - Office
 - Residential - High Density
 - Residential - Medium Density
 - Residential - Low Density
 - Residential - Large Lot
 - US340 East Primary Study Area
 - US340 East Extended Study Area
 - Urban Growth Boundaries
 - Towns
 - Federal Land
- Roads**
- Freeway
 - Route
 - Pike
 - Secondary
 - Tertiary
 - US340 Traffic Signals

