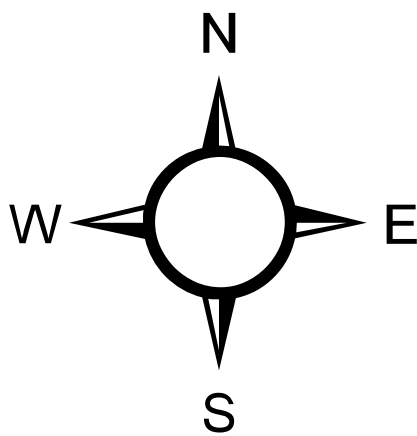
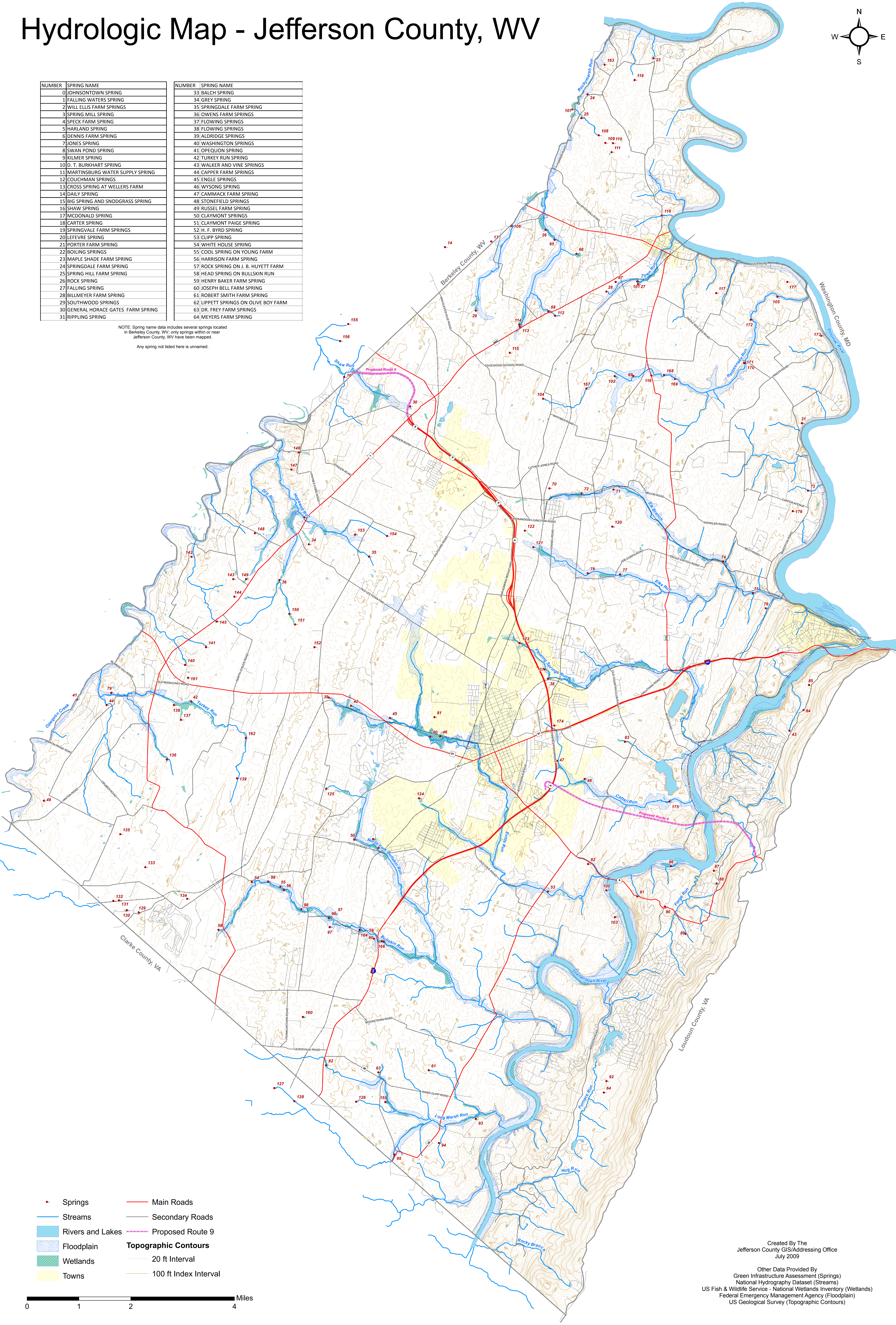


# Hydrologic Map - Jefferson County, WV



NUMBER	SPRING NAME	NUMBER	SPRING NAME
0	JOHNSONTOWN SPRING	33	BALCH SPRING
1	FALLING WATERS SPRING	34	GREY SPRING
2	WILL ELLIS FARM SPRINGS	35	SPRINGDALE FARM SPRING
3	SPRING MILL SPRING	36	OWENS FARM SPRINGS
4	SPECK FARM SPRING	37	FLOWING SPRINGS
5	HARLAND SPRING	38	FLOWING SPRINGS
6	DENNIS FARM SPRING	39	ALDRIDGE SPRINGS
7	JONES SPRING	40	WASHINGTON SPRINGS
8	SWAN POND SPRING	41	OPEQUON SPRING
9	KILMER SPRING	42	TURKEY RUN SPRING
10	D. T. BURKHART SPRING	43	WALKER AND VINE SPRINGS
11	MARTINSBURG WATER SUPPLY SPRING	44	CAPPER FARM SPRINGS
12	COUCHMAN SPRINGS	45	ENGLE SPRINGS
13	CROSS SPRING AT WELLERS FARM	46	WYSONG SPRING
14	DAILY SPRING	47	CAMMACK FARM SPRING
15	BIG SPRING AND SNODGRASS SPRING	48	STONEFIELD SPRINGS
16	SHAW SPRING	49	RUSSEL FARM SPRINGS
17	MCDONALD SPRING	50	CLAYMONT SPRINGS
18	CARTER SPRING	51	CLAYMONT PAIGE SPRING
19	SPRINGVALE FARM SPRINGS	52	H. F. BYRD SPRING
20	LEFEVRE SPRING	53	CLIPP SPRING
21	PORTER FARM SPRING	54	WHITE HOUSE SPRING
22	BOILING SPRINGS	55	COOL SPRING ON YOUNG FARM
23	MAPLE SHADE FARM SPRING	56	HARRISON FARM SPRING
24	SPRINGDALE FARM SPRING	57	ROCK SPRING ON J. B. HUYETT FARM
25	SPRING HILL FARM SPRING	58	HEAD SPRING ON BULLSKIN RUN
26	ROCK SPRING	59	HENRY BAKER FARM SPRING
27	FALLING SPRING	60	JOSEPH BELL FARM SPRING
28	BILLMEYER FARM SPRING	61	ROBERT SMITH FARM SPRING
29	SOUTHWOOD SPRINGS	62	LIPPETT SPRINGS ON OLIVE BOY FARM
30	GENERAL HORACE GATES FARM SPRING	63	DR. FREY FARM SPRINGS
31	RIPPLING SPRING	64	MEYERS FARM SPRING

NOTE: Spring name data includes several springs located in Berkeley County, WV; only springs within or near Jefferson County, WV have been mapped.  
Any spring not listed here is unnamed.



Created By The  
Jefferson County GIS/Addressing Office  
July 2009

Other Data Provided By  
Green Infrastructure Assessment (Springs)  
National Hydrography Dataset (Streams)  
US Fish & Wildlife Service - National Wetlands Inventory (Wetlands)  
Federal Emergency Management Agency (Floodplain)  
US Geological Survey (Topographic Contours)