

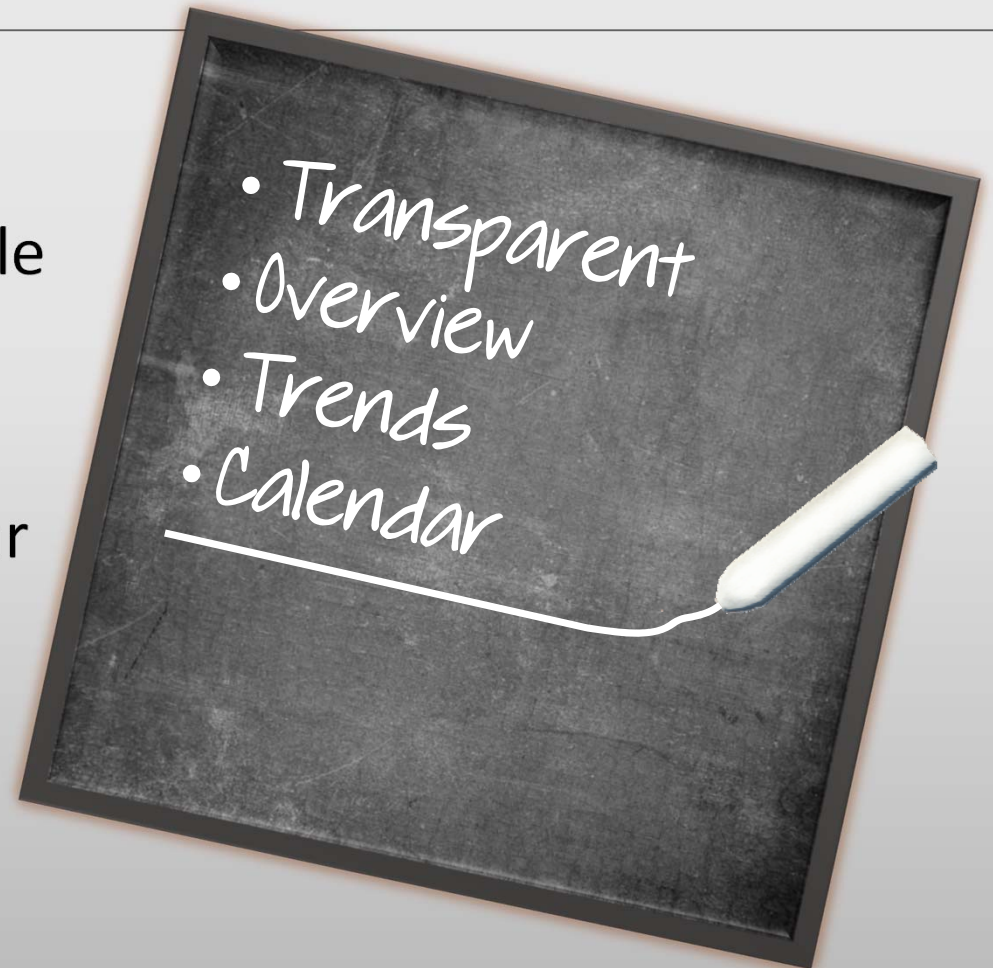


Jefferson County Commission

FY19 Budget
Public Forum

Budget Process

- www.jeffersoncountywv.org
- Transparency & Understandable
- Budget Document
- Budget Calendar
 - Due by March 28th each year



FY19 Budget Assumptions

Revenue:

- 12% Decrease in Table Games Revenue (\$74k)
- 2.6% Decrease in Video Lottery Revenue (\$78k)
- 1.3% Increase in the Assessable Base (\$365k)
(Potential for Max Levy Rate)
- Flat Ambulance Fee Revenue due to Rate Reduction in FY18

Expenditure:

- 8-10% Increase in Employee Health Insurance (\$225k)
- 1% Decrease in Retirement
- 1% COLA or Steps for Employees (\$150k)
- Increase in Regional Jail Fees (\$530k)



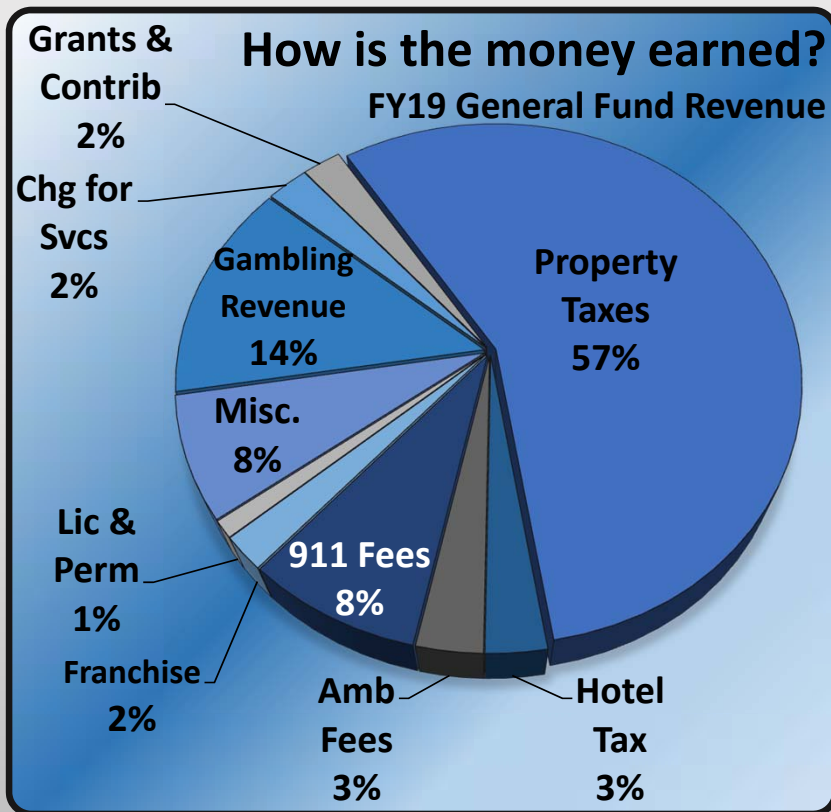
FY19 Budget Submissions



- Projected revenues \$25.5 million
- Total expenditures \$27.0 million
- *Shortfall* of \$2.1 million
 - Day Report Center \$110k
 - IT – New Position \$63k
 - 911 Center – 6 New Positions \$331k
 - Other Wage Increases \$95k
 - JCESA –Wages & Benefits \$233k
 - Regional Jail Fees \$530k

How is the money earned?

**FY19
Budget**



Revenue by Type

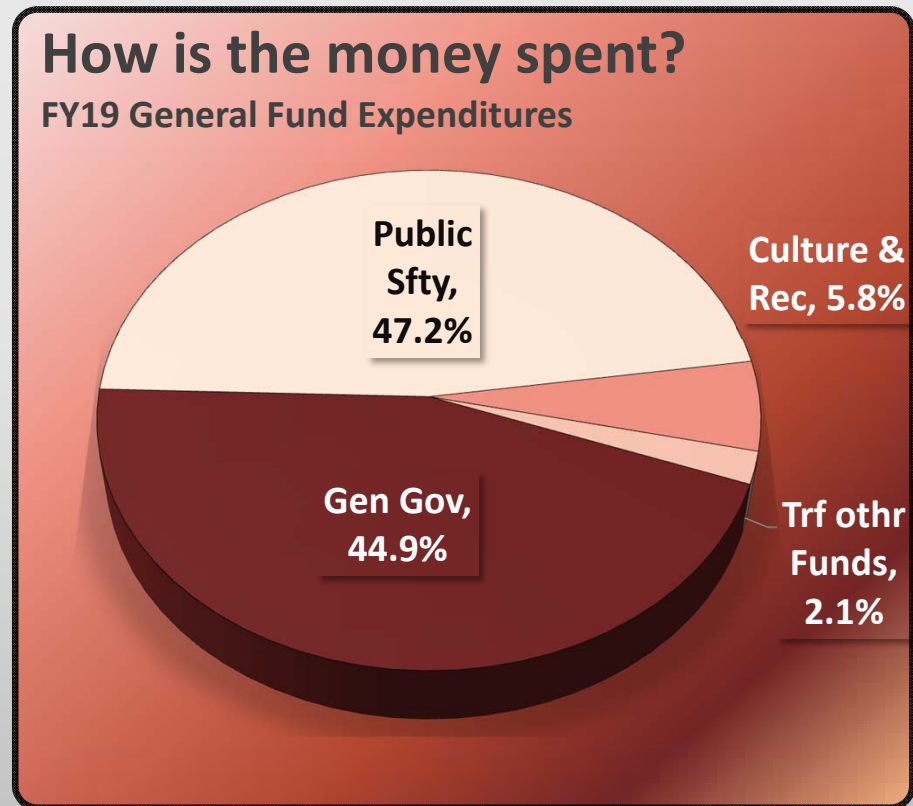
Charges for Services	634,830	2.5%
Grants & Contributions	586,000	2.3%
Property Taxes	14,406,245	56.5%
Hotel Occupancy Taxes	726,600	2.9%
Ambulance Fees	790,000	3.1%
911 Fees	2,104,100	8.3%
Franchise Agreements	544,000	2.1%
Licenses & Permits	275,335	1.1%
Miscellaneous	1,938,960	7.6%
Gambling Revenue	3,485,700	13.7%
Total Revenues	25,491,770	

How is the money Spent?

<u>Expenditures by Type</u>	<u>FY19 Budget</u>	
General Government	12,401,546	44.9%
Public Safety	13,023,467	47.2%
Health Culture & Rec	1,595,744	5.8%
Transfers to other Funds	577,200	2.1%
Total Expenditures	<u>27,597,957</u>	

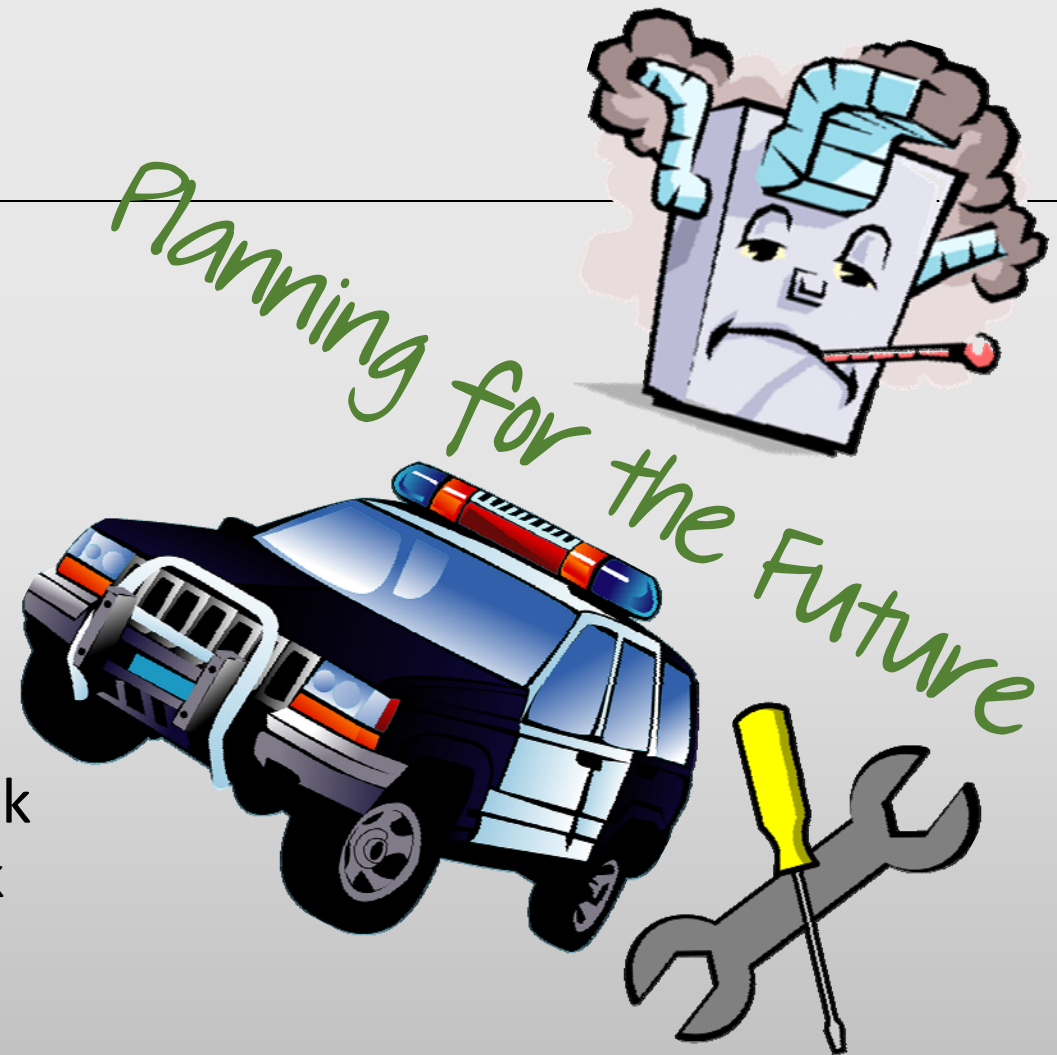
<u>Expenditures by Category</u>	<u>FY19 Budget</u>	
Personnel Services	\$ 15,045,061	54.5%
Contractual Services	\$ 2,359,627	8.6%
Commodities	\$ 2,981,355	10.8%
Contributions / Transfers	\$ 6,446,314	23.4%
Capital Outlay	\$ 765,600	2.8%
Total Expenditures	<u>27,597,957</u>	

Net Surplus (Deficit) (2,106,187)



Capital Outlay Fund

- Fund Balance Approaching Policy Minimum
- \$1.4M in Requests for FY19
- Infrastructure, Facility, and Equipment:
 - Vehicles \$316k
 - WWTP \$200k
 - Shepherdstown Library \$300k
 - Historical Commission \$235k
 - Other \$395k



Contact Information

Jefferson County Commission

Michelle Gordon

Director of Finance

304-724-8425

mgordon@jeffersoncountywv.org

