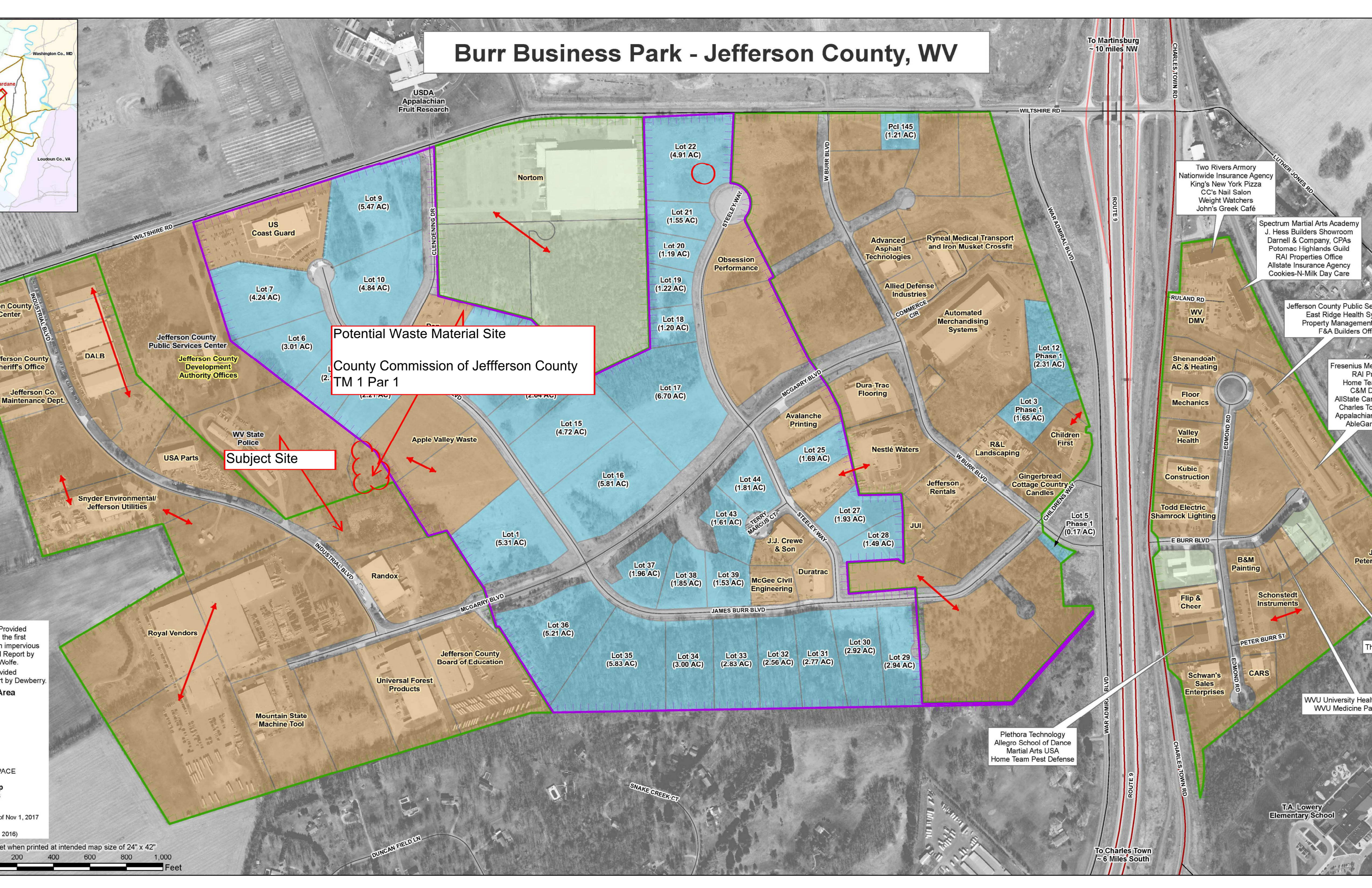


Burr Business Park - Jefferson County, WV



Potential Waste Material Site
 County Commission of Jefferson County
 TM 1 Par 1

Subject Site

Two Rivers Army
 Nationwide Insurance Agency
 King's New York Pizza
 CC's Nail Salon
 Weight Watchers
 John's Greek Café

Spectrum Martial Arts Academy
 J. Hess Builders Showroom
 Darnell & Company, CPAs
 Potomac Highlands Guild
 RAI Properties Office
 Allstate Insurance Agency
 Cookies-N-Milk Day Care

Jefferson County Public Se
 East Ridge Health Sy
 Property Management
 F&A Builders Off

Fresenius Me
 RAI Pr
 Home Te
 C&M D
 AllState Car
 Charles To
 Appalachian
 AbleGar

Plethora Technology
 Allegro School of Dance
 Martial Arts USA
 Home Team Pest Defense

WVU University Heal
 WVU Medicine Pa

T.A. Lowery
 Elementary School

Provided
 the first
 n impervious
 Report by
 Wolfe.
 ived
 t by Dewberry.
 Area

et when printed at intended map size of 24" x 42"
 200 400 600 800 1,000
 Feet

To Martinsburg
 ~ 10 miles NW

To Charles Town
 ~ 6 Miles South

USDA
 Appalachian
 Fruit Research

US
 Coast Guard

Jefferson County
 Public Services Center
 Jefferson County
 Development
 Authority Offices

WV State
 Police

USA Parts

Snyder Environmental/
 Jefferson Utilities

Royal Vendors

Mountain State
 Machine Tool

Universal Forest
 Products

Jefferson County
 Board of Education

Randox

Apple Valley Waste

Lot 15
 (4.72 AC)

Lot 16
 (5.81 AC)

Lot 37
 (1.96 AC)

Lot 38
 (1.85 AC)

Lot 39
 (1.53 AC)

Lot 32
 (2.56 AC)

Lot 31
 (2.77 AC)

Lot 30
 (2.92 AC)

Lot 29
 (2.94 AC)

Lot 43
 (1.61 AC)

Lot 44
 (1.81 AC)

Lot 27
 (1.93 AC)

Lot 28
 (1.49 AC)

Lot 25
 (1.69 AC)

Lot 3
 Phase 1
 (1.65 AC)

Lot 5
 Phase 1
 (0.17 AC)

Lot 12
 Phase 1
 (2.31 AC)

Lot 20
 (1.19 AC)

Lot 19
 (1.22 AC)

Lot 21
 (1.55 AC)

Lot 22
 (4.91 AC)

Lot 9
 (5.47 AC)

Lot 10
 (4.84 AC)

Lot 7
 (4.24 AC)

Lot 6
 (3.01 AC)

Lot 1
 (5.31 AC)

Lot 2
 (2.21 AC)

Lot 3
 Phase 1
 (1.65 AC)

Lot 4
 (2.04 AC)

Lot 5
 (2.04 AC)

Lot 6
 (2.04 AC)

Lot 7
 (2.04 AC)

Lot 8
 (2.04 AC)

Lot 9
 (2.04 AC)

Lot 10
 (2.04 AC)

Lot 11
 (2.04 AC)

Lot 12
 (2.04 AC)

Lot 13
 (2.04 AC)

Lot 14
 (2.04 AC)

Lot 15
 (2.04 AC)

Lot 16
 (2.04 AC)

Lot 17
 (2.04 AC)

Lot 18
 (2.04 AC)

Lot 19
 (2.04 AC)

Lot 20
 (2.04 AC)

Lot 21
 (2.04 AC)

Lot 22
 (2.04 AC)

Lot 23
 (2.04 AC)

Lot 24
 (2.04 AC)

Lot 25
 (2.04 AC)

Lot 26
 (2.04 AC)

Lot 27
 (2.04 AC)

Lot 28
 (2.04 AC)

Lot 29
 (2.04 AC)

Lot 30
 (2.04 AC)

Lot 31
 (2.04 AC)

Lot 32
 (2.04 AC)

Lot 33
 (2.04 AC)

Lot 34
 (2.04 AC)

Lot 35
 (2.04 AC)

Lot 36
 (2.04 AC)

Lot 37
 (2.04 AC)

Lot 38
 (2.04 AC)

Lot 39
 (2.04 AC)

Lot 40
 (2.04 AC)

Lot 41
 (2.04 AC)

Lot 42
 (2.04 AC)

Lot 43
 (2.04 AC)

Lot 44
 (2.04 AC)

Lot 45
 (2.04 AC)

Lot 46
 (2.04 AC)

Lot 47
 (2.04 AC)

Lot 48
 (2.04 AC)

Lot 49
 (2.04 AC)

Lot 50
 (2.04 AC)

Lot 51
 (2.04 AC)

Lot 52
 (2.04 AC)

Lot 53
 (2.04 AC)

Lot 54
 (2.04 AC)

Lot 55
 (2.04 AC)

Lot 56
 (2.04 AC)

Lot 57
 (2.04 AC)

Lot 58
 (2.04 AC)

Lot 59
 (2.04 AC)

Lot 60
 (2.04 AC)

Lot 61
 (2.04 AC)

Lot 62
 (2.04 AC)

Lot 63
 (2.04 AC)

Lot 64
 (2.04 AC)

Lot 65
 (2.04 AC)

Lot 66
 (2.04 AC)

Lot 67
 (2.04 AC)

Lot 68
 (2.04 AC)

Lot 69
 (2.04 AC)

Lot 70
 (2.04 AC)

Lot 71
 (2.04 AC)

Lot 72
 (2.04 AC)

Lot 73
 (2.04 AC)

Lot 74
 (2.04 AC)

Lot 75
 (2.04 AC)

Lot 76
 (2.04 AC)

Lot 77
 (2.04 AC)

Lot 78
 (2.04 AC)

Lot 79
 (2.04 AC)

Lot 80
 (2.04 AC)

Lot 81
 (2.04 AC)

Lot 82
 (2.04 AC)

Lot 83
 (2.04 AC)

Lot 84
 (2.04 AC)

Lot 85
 (2.04 AC)

Lot 86
 (2.04 AC)

Lot 87
 (2.04 AC)

Lot 88
 (2.04 AC)

Lot 89
 (2.04 AC)

Lot 90
 (2.04 AC)

Lot 91
 (2.04 AC)

Lot 92
 (2.04 AC)

Lot 93
 (2.04 AC)

Lot 94
 (2.04 AC)

Lot 95
 (2.04 AC)

Lot 96
 (2.04 AC)

Lot 97
 (2.04 AC)

Lot 98
 (2.04 AC)

Lot 99
 (2.04 AC)

Lot 100
 (2.04 AC)