

Parks & Trails of Jefferson County, WV and Surrounding Areas

NATIONAL PARKS

1. Antietam National Battlefield
2. Appalachian Trail
3. Chesapeake & Ohio Canal (C&O)
4. Harpers Ferry National Historic Park
5. Maryland Heights

STATE PARKS

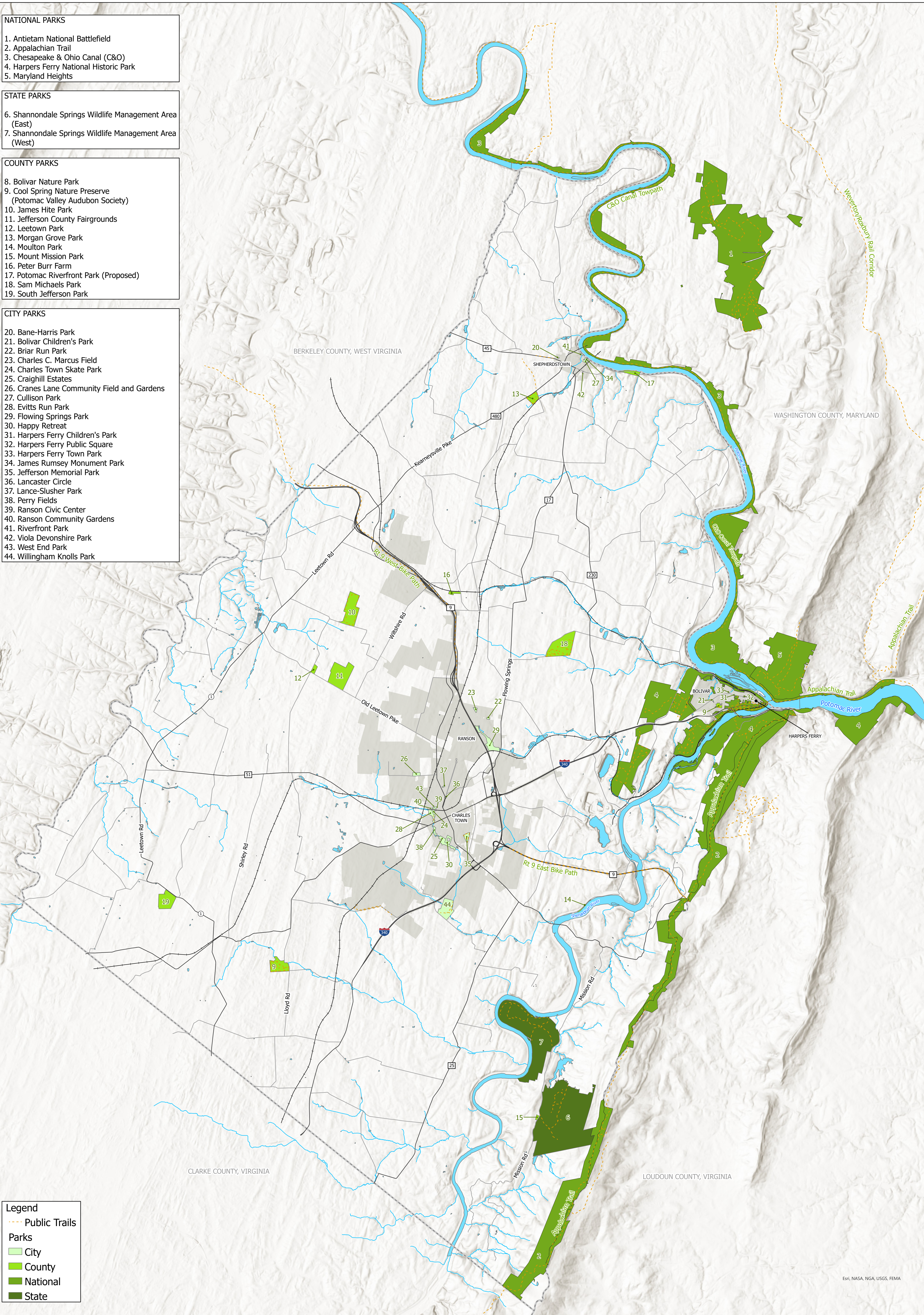
6. Shannondale Springs Wildlife Management Area (East)
7. Shannondale Springs Wildlife Management Area (West)

COUNTY PARKS

8. Bolivar Nature Park
9. Cool Spring Nature Preserve (Potomac Valley Audubon Society)
10. James Hite Park
11. Jefferson County Fairgrounds
12. Leetown Park
13. Morgan Grove Park
14. Moulton Park
15. Mount Mission Park
16. Peter Burr Farm
17. Potomac Riverfront Park (Proposed)
18. Sam Michaels Park
19. South Jefferson Park

CITY PARKS

20. Bane-Harris Park
21. Bolivar Children's Park
22. Briar Run Park
23. Charles C. Marcus Field
24. Charles Town Skate Park
25. Craighill Estates
26. Cranes Lane Community Field and Gardens
27. Cullison Park
28. Evitts Run Park
29. Flowing Springs Park
30. Happy Retreat
31. Harpers Ferry Children's Park
32. Harpers Ferry Public Square
33. Harpers Ferry Town Park
34. James Rumsey Monument Park
35. Jefferson Memorial Park
36. Lancaster Circle
37. Lance-Slusher Park
38. Perry Fields
39. Ranson Civic Center
40. Ranson Community Gardens
41. Riverfront Park
42. Viola Devonshire Park
43. West End Park
44. Willingham Knolls Park



Legend

- Public Trails
- Parks**
- City
- County
- National
- State

N

0 0.5 1 2 3 4 Miles

All parks and trails represented on this map are public access.

Map Created: September 1, 2022

Data Sources:
 World Hillshade Base Map: Esri, NASA, NGA, USGS, FEMA (2022)
 All Other Data: Jefferson County GIS/Addressing Office (2022)



Esri, NASA, NGA, USGS, FEMA