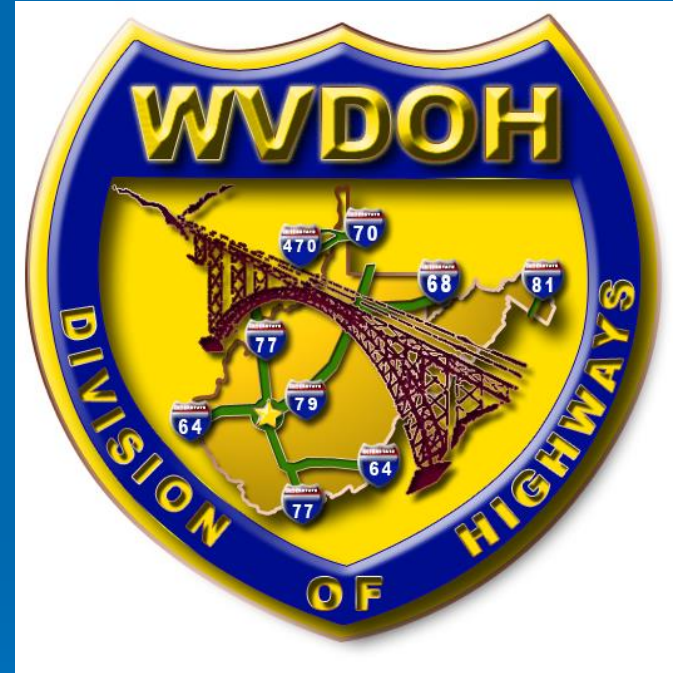


West Virginia Department of Transportation Division of Highways District Five

2023 District Informational Meeting

Presented by Travis Ray, PE
District Five Deputy District Engineer



HIGHWAY CLASSIFICATION SYSTEMS

- Jurisdictional
- Sign
- Federal Aid
- National Highway Functional Classification
- WV Legal Functional Classification

Jurisdictional System

➤ WVDOT 34,961 miles

Sign System

➤ I, US, WV, CR, HARP, PF

Sign System	Mileage	Percent
Interstate	554.59	1.53%
US	1,800.70	4.96%
WV	3,633.45	10.01%
CR	28,878.72	79.57%
HARP	905.39	2.49%
PF	193.41	0.53%

Federal Aid System

- Interstate System - 554.59 Miles
- National Highway System - 1,243.13 Miles
- Surface Transportation Program – 8,532.26 Miles
- 10,354.10 Miles Eligible for Federal Aid
28.5%

National Highway Functional Classification

- Urban/Rural Principal Arterial System
- Urban/Rural Minor Arterial System
- Urban Collector System
- Rural Collector System
 - Rural Major Collector
 - Rural Minor Collector
- Urban/Rural Local System

WV Legal Functional Classification

- X - 1,002 Miles or 2.79%
- T - 1,682 Miles or 4.69%
- F - 3,392 Miles or 9.46%
- SLS - 29,790 Miles or 83.06%
 - Essential Arterial
 - Collector
 - Land Access
 - HARP
 - PF
 - Occasional Use

District 5 Road Inventory

ORG	ORG Miles	Paved Miles	X	T	F	T&F	Paved SLS	Stone Surfaced
0502 BERKELEY	614.43	543.27	26.00	20.71	19.47	40.18	501.06	71.16
0512 GRANT	373.45	315.31	21.29	53.42	34.95	88.37	230.24	58.14
0514 HAMPSHIRE	694.55	484.10	0.00	45.13	61.26	106.39	377.68	210.45
0516 HARDY	476.93	379.81	39.52	10.00	61.94	71.94	308.47	97.12
0519 JEFFERSON	411.60	334.19	37.76	16.63	37.59	54.22	304.05	77.41
0529 MINERAL	403.35	346.98	0.00	50.19	45.47	95.66	252.00	56.37
0533 MORGAN	395.81	319.43	0.00	30.34	23.89	54.23	265.46	76.38
	3370.12	2723.09		226.42	284.57	510.99	2238.96	647.03
						\$8,000,000.00	\$15,000,000.00	
					Cost/Mile	\$300,000.00	\$150,000.00	
					Miles/Year	26.67	100.00	
					Years/Cycle	19.16	22.39	

Core Maintenance Activities

- Pothole Patching
- Patching
- Mowing
- Ditching
- Stabilization



Pothole Patching

All paved roads reviewed and pothole
patching completed by Memorial Day



Pothole Patching

ORGANIZATION	PAVED ROAD MILES
0502 BERKELEY	543.27
0512 GRANT	315.31
0514 HAMPSHIRE	484.10
0516 HARDY	379.81
0519 JEFFERSON	334.19
0529 MINERAL	346.98
0533 MORGAN	319.43
0564 9/340 EXPRESSWAY	39.81
0571 I-81	38.10
0582 H – BAKER	36.71
0583 H - KNOBLEY	31.71



Patching

Raveling, cracking, rutting, shoving, edge failures, base failures, settlements.



A photograph of a two-lane asphalt road winding through a dense green forest. The road surface shows significant wear and tear. A large, rectangular patch of dark, textured material, likely a repair, is visible in the left lane. To the right of this patch, the road surface is heavily raveled, with loose gravel and broken asphalt visible. A double yellow line runs down the center of the road, and a single white line runs along the right edge. In the distance, a yellow construction vehicle is visible on the road. The text "Patching" and "Raveling" is overlaid on the right side of the image.

Patching

Raveling

Patching

Cracking





Patching
Cracking

Patching

Base Failure



Root Cause?



Mowing

- Expressway Mowing, 4 week cycle, first cycle completed by Memorial Day
- 3-2-1 Mowing Plan for County Orgs
 - (2 mowing – 1 brush mowing) on Primary (T&F)
 - 2 mowing cycles on Secondary (SLS) paved roads
 - Unpaved roads 1 time per year

Ditching

- Expressway – all high shoulder and ditches addressed yearly
- County - 1/3 of paved road miles completed each year to achieve a 3 year cycle.

Ditching High Shoulder

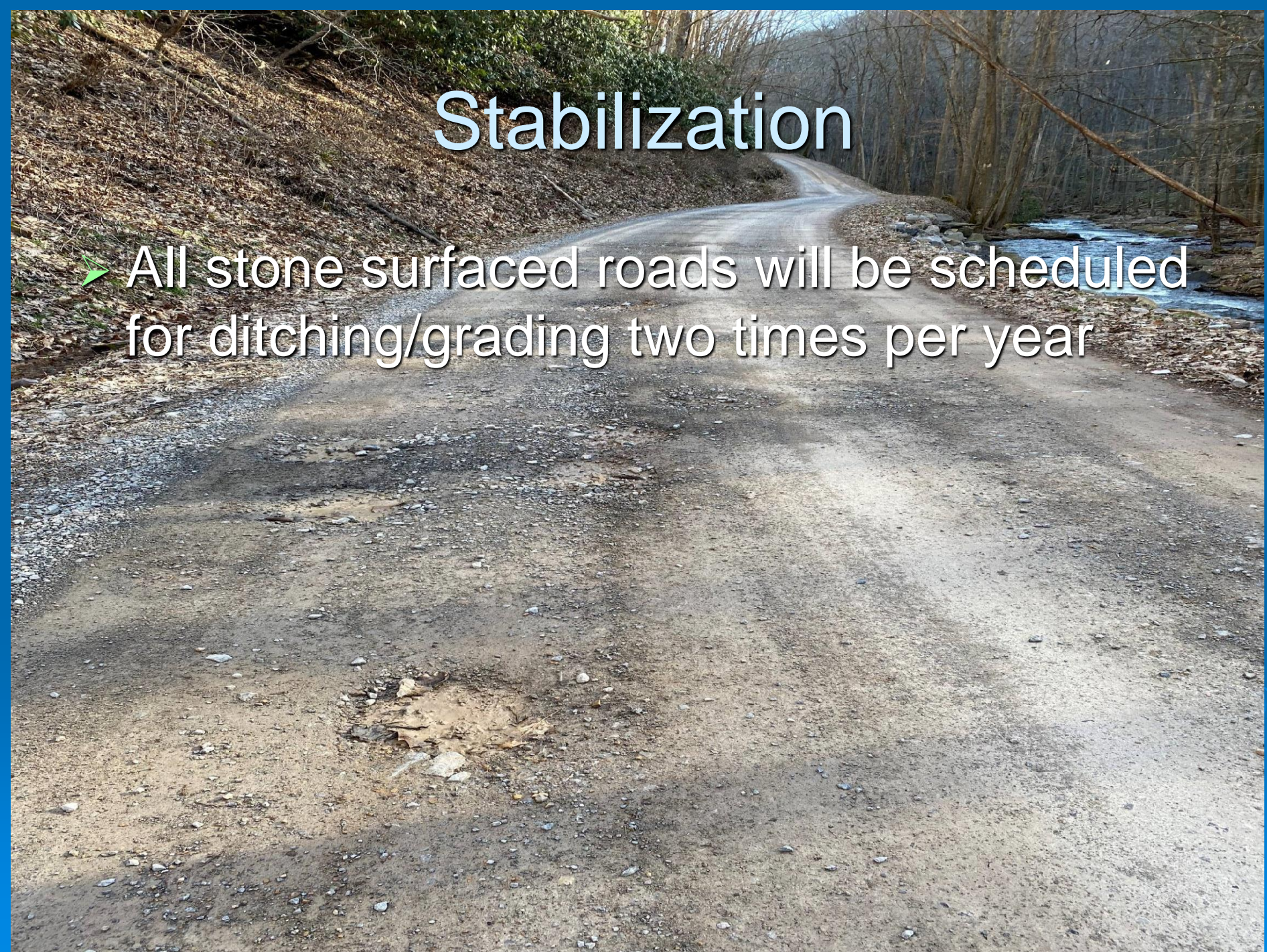


Ditching/Shouldering

ORGANIZATION	PAVED MILES	YEARLY DITCHING MILES
0502 BERKELEY	543.27	181.09
0512 GRANT	315.31	105.10
0514 HAMPSHIRE	484.10	161.37
0516 HARDY	379.81	126.60
0519 JEFFERSON	334.19	111.40
0529 MINERAL	346.98	115.66
0533 MORGAN	319.43	106.48
0564 9/340 EXPRESSWAY	39.81	39.81 X 2
0571 I-81	38.10	38.10 X 2
0582 H – BAKER	36.71	36.71 X 2
0583 H - KNOBLEY	31.71	31.71 X 2

Stabilization

- All stone surfaced roads will be scheduled for ditching/grading two times per year



Stone Surfaced Roads

County	Stone Surfaced Miles
0502 BERKELEY	71.16
0512 GRANT	58.14
0514 HAMPSHIRE	210.45
0516 HARDY	97.12
0519 JEFFERSON	77.41
0529 MINERAL	56.37
0533 MORGAN	76.38

Snow Removal/Canopy and Hazardous Tree Removal

