

# Jefferson County Planning Commission

## Work Session



JULY 11,  
2023

# Agenda Items

**Item #1: Community Outreach Preparation**

**Item #2: Livability Profile**

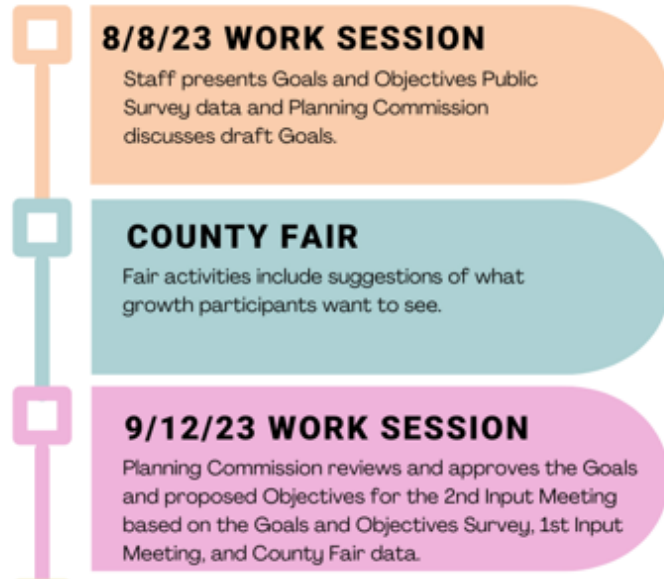
**Item #3: Comprehensive Plan Composition**

# ITEM #1: COMMUNITY OUTREACH PREPARATION

- Staff Presentation on County Fair Activities
- Staff Presentation on 2<sup>nd</sup> Public Input Meeting Outline

# NEXT THREE MONTHS...

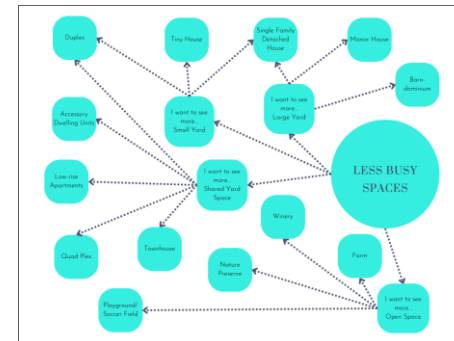
## Proposed Timeline Change



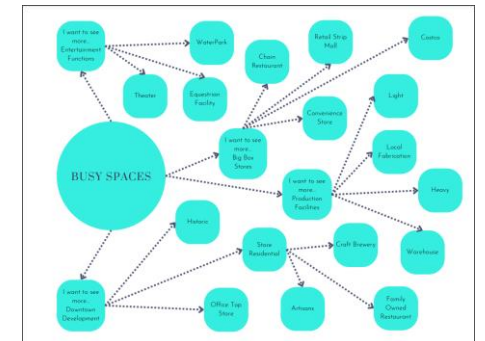
# COUNTY FAIR ADVENTURE BOARD

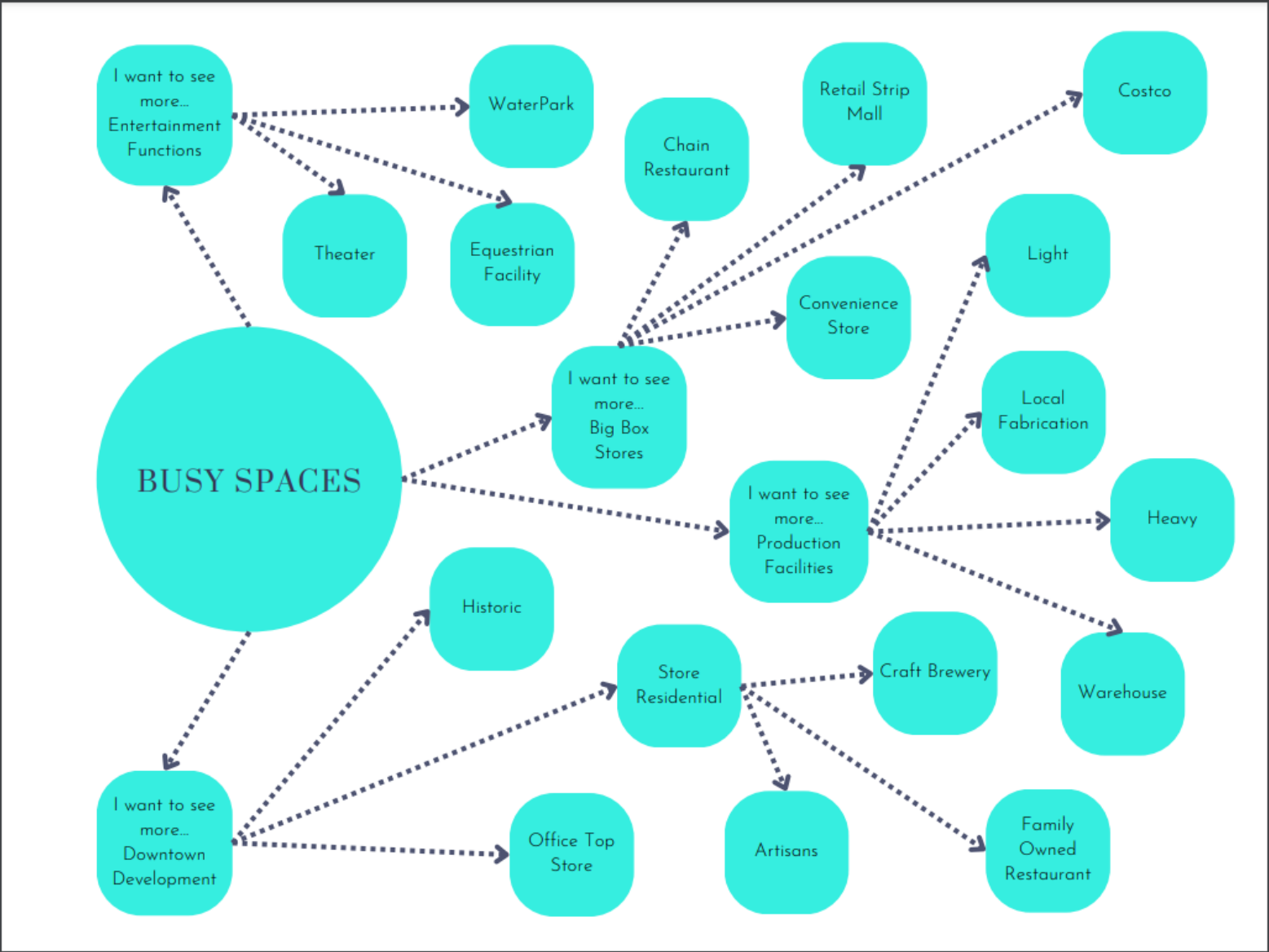
The participant begins by deciding if they want to see a **Busy Space** or **Less Busy Space**. Then they follow an “I want to see...” statement. Each statement leads to several different pictures of what would fit.

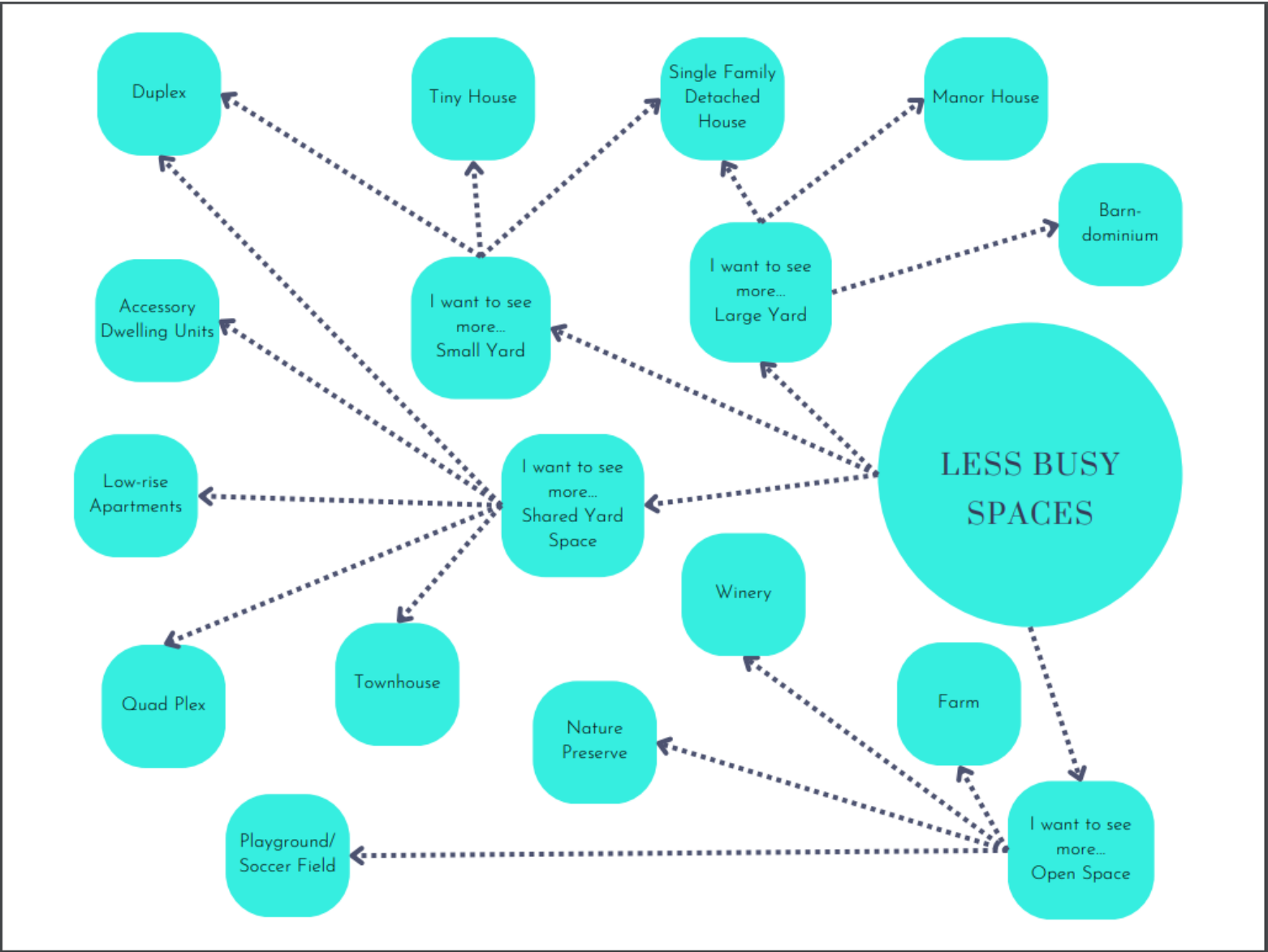
Choose Your Own Adventure of What to See Next Door!



OR





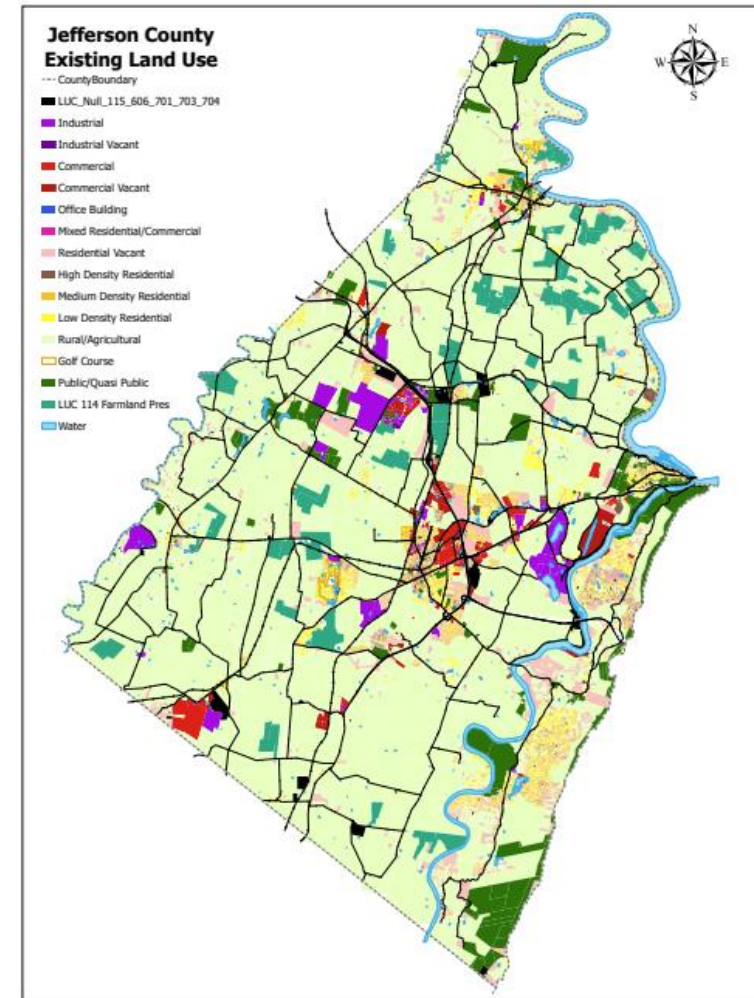


# WHERE DID YOUR PATH TAKE YOU?

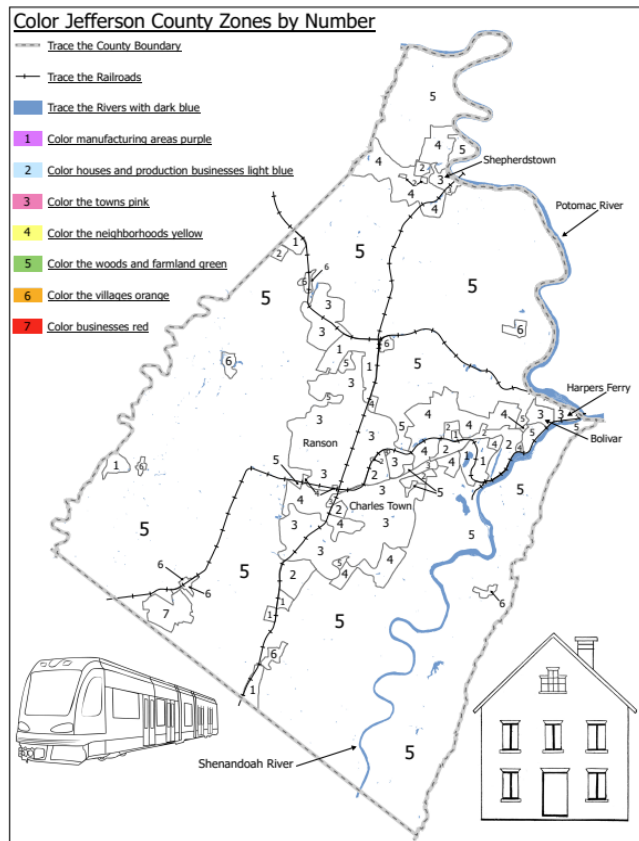
Example Note after following the flow chart

I chose downtown development because I want to see more locally owned coffee shops that anyone can walk to.

Participants will also be asked to place a dot on the map of where they live if they live in the County



# COUNTY FAIR COLORING SHEETS

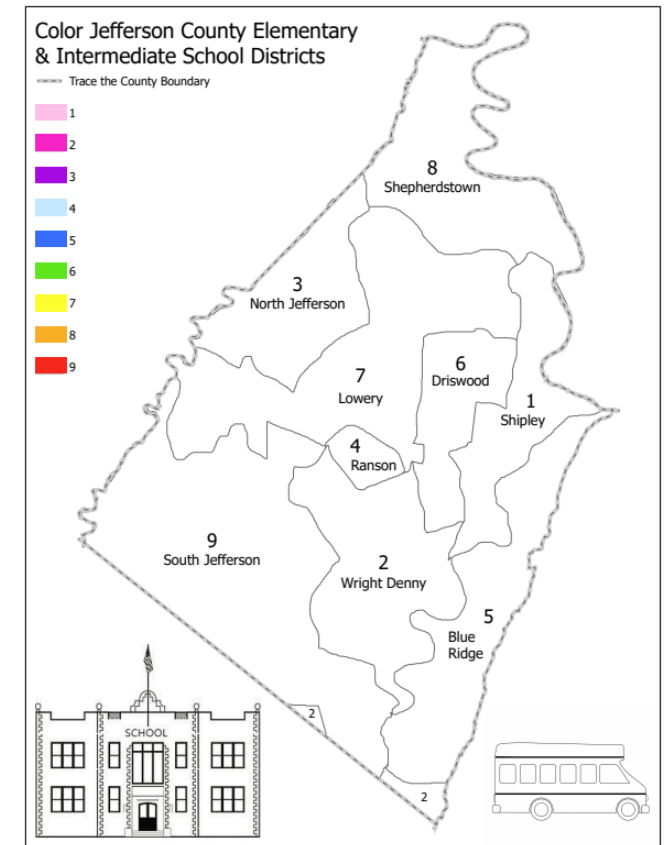


## Left Sheet

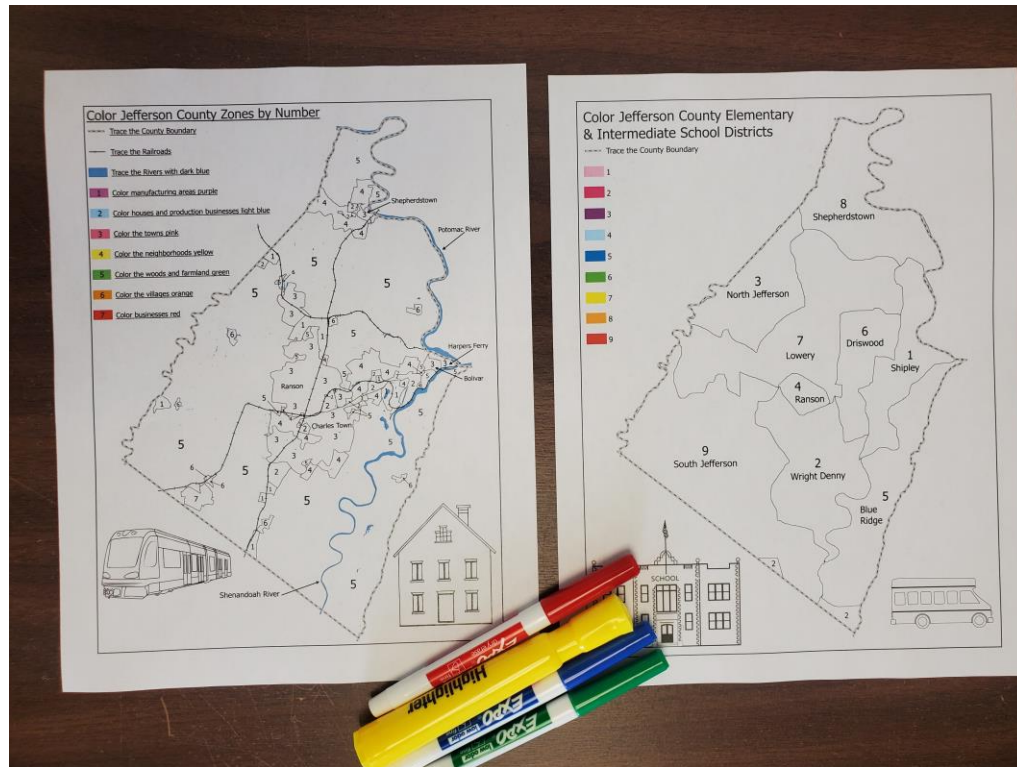
- Detailed Color by Number sheet of Jefferson County
- Trace roads, boundary, rivers & color different zones

## Right Sheet

- Simple Color by Number sheet of Jefferson County
- Color in different school districts



# FILL OUT A COLOURING SHEET? GET A PRIZE!



# PLANNING COMMISSION VOLUNTEERS

**Sign Up for County Fair**

	Sunday	Monday	Tuesday	Wednesday	Thursday	Friday	Saturday
10:00 AM							
11:00 AM							
12:00 PM							
1:00 PM							
2:00 PM							
3:00 PM							
4:00 PM							
5:00 PM							
6:00 PM							
7:00 PM							

We are planning to close the booth every night by 8:00 PM

We would like to have at least two volunteers at the booth per two hour time slot.

- We will need two volunteers or staff at the booth during the fair
- Will Planning Commission be able to cover all of the times available or can staff reach out for additional volunteers?

# 2<sup>ND</sup> PUBLIC INPUT MEETING

## Staff Presentation

- Staff presents results of Input Meeting, Public Survey, and County Fair
- Staff explains purpose of meeting

## Goals and Objectives Review

- Goals will be presented and placed around the room for participants to discuss and comment on
- Participants will be asked to write out and propose Objectives for the presented Goals

## Preferred Growth Area

- Several current ELU maps will be posted around the room for participants to suggest Preferred Growth Areas

## Notes from the 2<sup>nd</sup> Public Input Meeting

-When people enter the meeting participants will be asked to place a dot on where they live in the County

-Staff needs a decision on hosting the meeting at Washington or Jefferson HS

## ITEM #2: LIVABILITY PROFILE

- Staff Presentation of Community Data
- Review of Existing Land Use Map

# ORGANIZATIONAL PRIORITIES

## AACAJC

African-American Community  
Association of Jefferson County

- Preventing a roundabout at the Y junction of Middleway Pike and Summit Point Road
- Affordable housing and broadband access for low income residents with no caps on data
- Improving cultural heritage tourism opportunities and to enhance the African American tourist experience

## JCCVB

Jefferson County Convention &  
Visitors Bureau

- Attract more active and experiential tourism opportunities
- Need for more trails for cycling, mountain biking, horse riding, ATV driving, and walking
- Focus on the overall visitor experience including the need for infrastructure to accommodate more visitors to the county

# EXISTING LAND USE BREAKDOWN

*\*The categories are all based on the assigned land use codes and/or lot sizes for tax parcels\**

- Industrial: Cold storage facilities, warehouses, manufacturing plants
- Industrial Vacant: Undeveloped land for industrial purposes
- Commercial: Bakeries, shopping centers, banks, day cares
- Commercial Vacant: Undeveloped land for commercial purposes
- Office Building: Low or high-rise offices, office condominiums
- Mixed Residential/Commercial: Downtown row types

- Industrial
- Industrial Vacant
- Commercial
- Commercial Vacant
- Office Building
- Mixed Residential/Commercial
- Residential Vacant
- High Density Residential
- Medium Density Residential
- Low Density Residential
- Rural/Agricultural
- Golf Course
- Public/Quasi Public
- LUC 114 Farmland Pres

# EXISTING LAND USE BREAKDOWN

*\*The categories are all based on the assigned land use codes and/or lot sizes for tax parcels\**

- Residential Vacant: Empty residential land with lot size less than or equal to 1 acre
- High Density Residential: Mobile home parks, low rise apartments, residential land with lot size less than 0.145 acres
- Medium Density Residential: Single family detached house on small lot, residential land with lot size less than 0.334 acres
- Low Density Residential: Residential land with lot size less than or equal to 1 acre
- Rural/Agricultural: Active and inactive farms, large vacant tracts, or residential land with lot size greater than 1 acre
- Golf Course: Country clubs with a golf course
- Public/Quasi Public: Federal/State owned land, parks, utilities, religious or other public institutions
- Farmland Preservation: Farmland under easement

- Industrial
- Industrial Vacant
- Commercial
- Commercial Vacant
- Office Building
- Mixed Residential/Commercial
- Residential Vacant
- High Density Residential
- Medium Density Residential
- Low Density Residential
- Rural/Agricultural
- Golf Course
- Public/Quasi Public
- LUC 114 Farmland Pres

# ITEM #3: COMPREHENSIVE PLAN COMPOSITION

- Discussion on Comprehensive Plan Format

# WHY FORMATTING MATTERS

- **Staff is proposing some changes to the Comprehensive Plan format so it is more focused, usable, and attainable.**
- Staff is not suggesting the following ideas are relevant to Jefferson County, the following Comprehensive Plans are presented as examples of different ways to format
- All of the presented examples are extracts of relevant pages, not entire plans
- Staff cut all acknowledgements, history, and letters from the Planning Commission/Chief Executive to focus on content

# What we need from the Planning Commission tonight...

- Will Planning Commissioners be able to volunteer to for the County Fair?
- Has Planning Commission determined a general format to prepare the Comprehensive Plan?
- Would Planning Commission like to have a Work Session on July 25<sup>th</sup>, 2023 or include agenda items on the Regular Meeting agenda?
- Will Planning Commission call for an additional Work Session on September 26<sup>th</sup>, 2023?

## Updates

- Staff will begin going through the Existing Land Use map in future meetings and separately with the municipalities
- Staff has confirmed Fiverr does not use contracts
- Staff will begin boosting the visibility of the Online Survey post
- A video has not been made as part of Public Outreach
- Number of respondents to the Online Survey



**June 25, 2023**

Next Work Session Meeting

