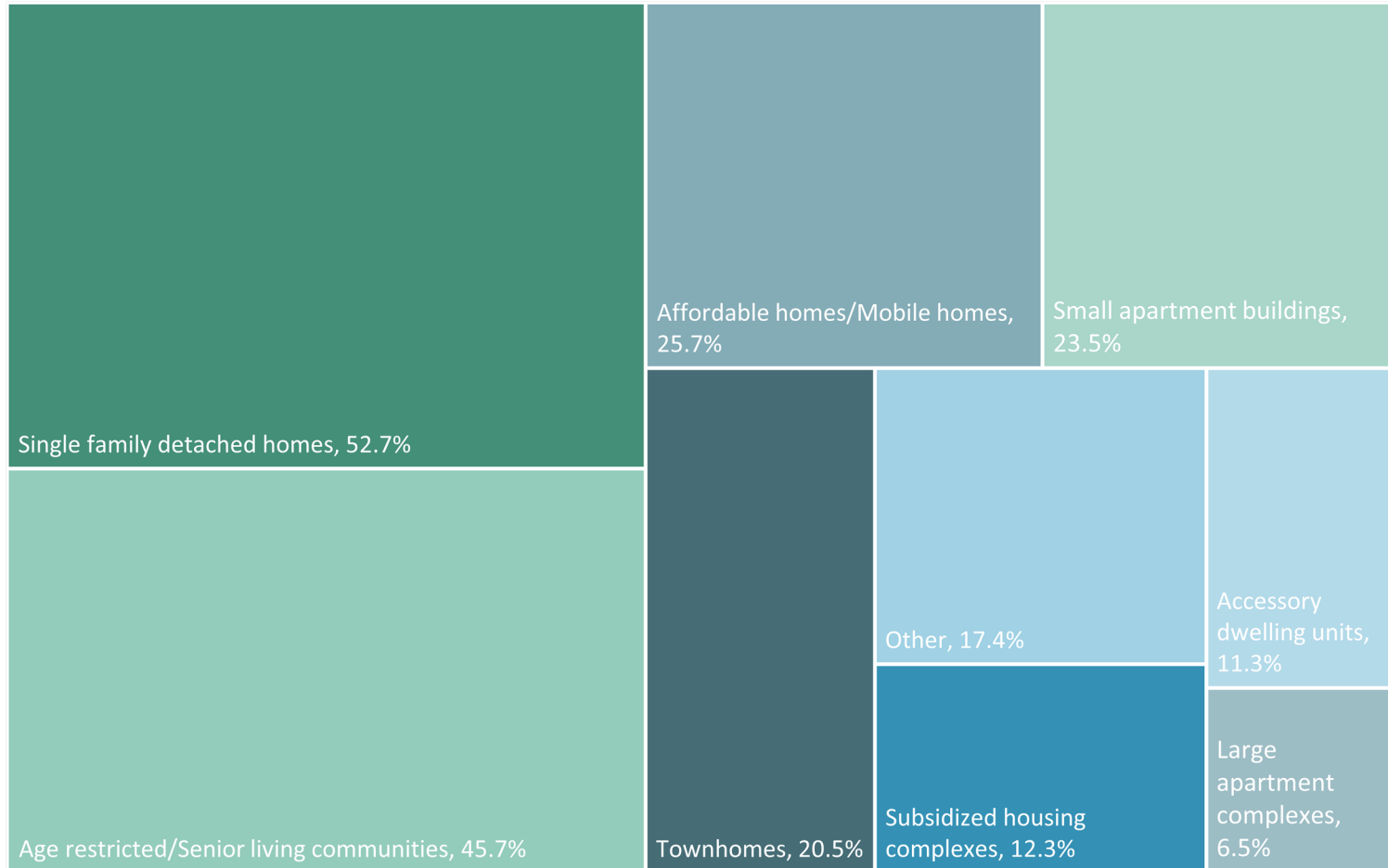

SUMMARY OF THE GOALS AND OBJECTIVES PUBLIC SURVEY

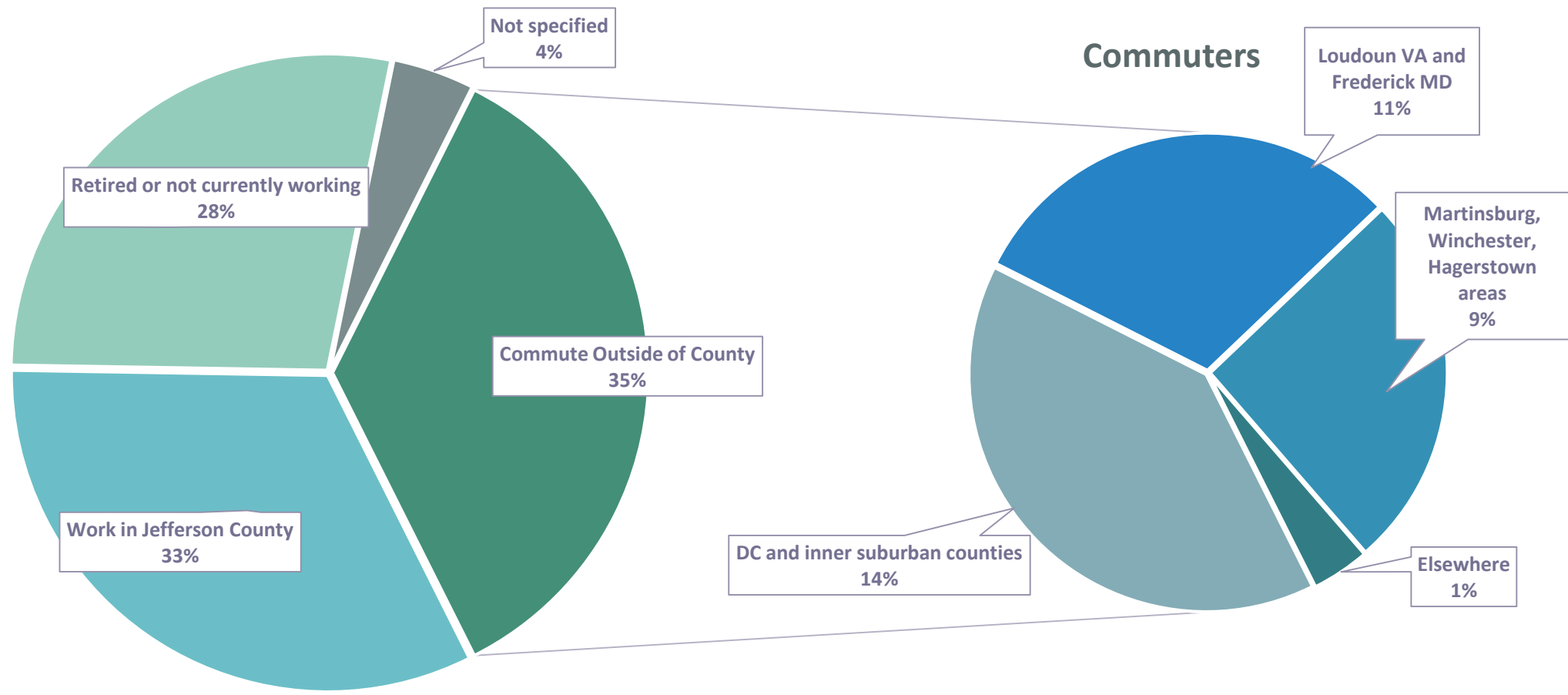
As part of the 2045 Comprehensive Plan Update, Planning Commission has hosted several public outreach events to get input from the community. Public outreach is critical in writing a Comprehensive Plan to both gather information from the community, allow a forum for input, and create buy in to the plan. The Goals and Objectives Public Survey was one of the most direct ways to gather input and was open from June 21st until July 21st. The survey included a number of specific questions about housing, traffic, land use and other critical topics and three open response questions. A total of 1,158 responses were collected from both online and paper submissions. Key findings are presented below as summaries of the gathered responses including the three open response questions. A full breakdown of all questions can be found on the August 8th, 2023 Work Session Meeting.

Housing

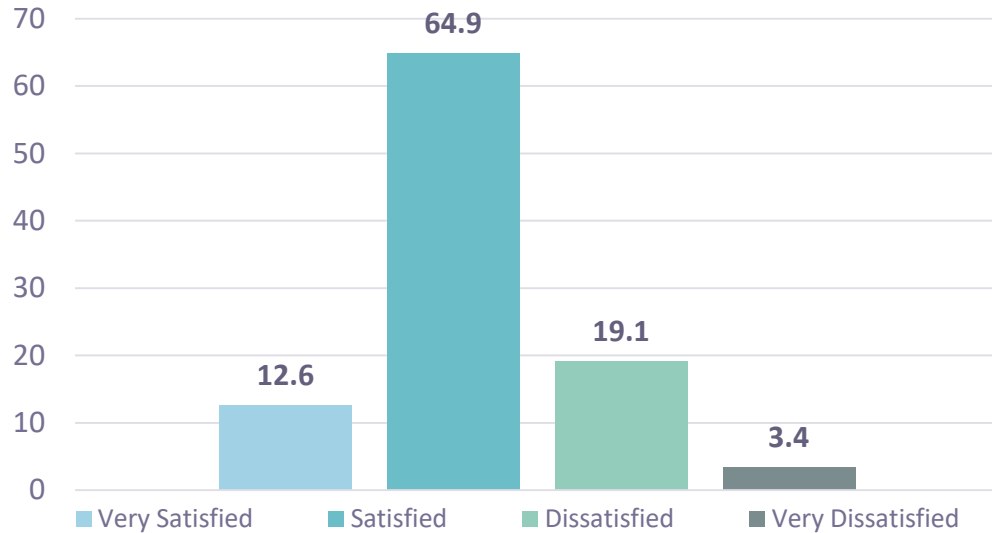


When asked what type of new housing should be seen in the County, respondents were able to select up to three choices. Fifty two percent of respondents prefer to see single family detached houses as new development. Age in place communities had the next most interest with forty six percent of respondents preferring their development. Around a fourth of respondents also mentioned some degree of denser developments including townhomes, small apartment buildings, and affordable homes.

A little more than a third of respondents commute to work outside of Jefferson County, heading to the District of Columbia, inner suburban counties around DC, and counties bordering Jefferson County.



Overall Satisfaction with Quality of Life



Percent Very Satisfied or Satisfied = 77.5%

National Average of Very Satisfied or Satisfied = 80%

The overall satisfaction with the quality of life in Jefferson County sits around the national average with seventy eight percent of respondents being Very Satisfied or Satisfied.

Respondents were most interested in actively protecting the watersheds in Jefferson County while retaining the rural and small town character and not developing agricultural land into commercial growth. Affordable housing also saw generally favorable results.

Do you agree or disagree with the statements below?	Score
A community should have low income and affordable housing.	2.75
It is important for teachers, 1 st responders, and nurses to live in the county they work in.	2.95
Jefferson County is a good place from which to commute to work.	2.37
It is important to have access to public transit to and from DC, such as the MARC train.	3.24
The county should develop a new business park to attract new commercial and/or industrial opportunities.	1.45
The rural and small town character of the county is important.	3.57
Agricultural land should be developed for non-agricultural commercial growth.	0.66
Jefferson should actively protect the health of the watersheds in the county.	3.72

Strongly Disagree = 0

Disagree = 1

Neutral = 2

Agree = 3

Strongly Agree = 4

ARE THERE ANY SPECIFIC CHANGES THAT HAVE TAKEN PLACE IN JEFFERSON COUNTY IN THE LAST 20 YEARS THAT YOU HAVE NOT LIKED?



POOR INFRASTRUCTURE DEVELOPMENT

Residents expressed worry over the new housing developments without adequate services including increasing traffic, access to utilities, and space in schools.

Comments included an interest in stopping sprawl and Jefferson County not duplicating the development patterns of neighboring counties.



EXPANSION OF HEAVY INDUSTRY

Opposition to heavy industry highlighted quality of life, environmental, and health concerns for residents of the county.

Rockwood in particular was cited as a problem in the county.



LOSS OF OPEN SPACE

Preserving traditional farmland and historic sites in the county was a significant theme among respondents.

Solar farms were also mentioned as replacing open spaces and reducing scenic views.



LACK OF LOCAL GOVERNMENT TRANSPARENCY

Residents voiced their concern over the lack of transparency in government decisions and decried poor planning regarding growth in the county.

Reduction in impact fees was also cited as a problem in light of development in the community.



HOUSING IN THE COMMUNITY

Negative housing changes include complaints about residential growth in general, resentment specifically of new townhouses, poor aesthetics of new housing, and lack of affordable housing.

The effect of tourism and short term rentals also were cited as detrimental to the community.

GOALS AND OBJECTIVES SURVEY RESPONSES

ARE THERE ANY SPECIFIC CHANGES THAT HAVE TAKEN PLACE IN JEFFERSON COUNTY IN THE LAST 20 YEARS THAT YOU HAVE LIKED?



COMMUNITY DEVELOPMENT

Community improvements such as wider access to broadband internet, new medical facilities, and the Agricultural Innovation Center at Shepherd University were noted as high points.

The expansion of Route 9 and other road improvements were mentioned as positive infrastructure development.



NEW BUSINESSES

Local business growth was held up as a great boon to the community, particularly for the downtown's.

New restaurants, stores, and retail options received the most prominent positive responses.



PARKS AND TRAILS

Amenities in the community have been expanding as bike trails, walking trails, and events have offered new opportunities to be outside.

New parks and the opening of the AMP at Sam Michael's Park received enthusiastic feedback.



COMMUNITY EVENTS AND FESTIVALS

Successful festivals and farmers markets were key points respondents commented on as a good direction for the county.

Cultural and community events such as the theater festival garnered extra attention in comments.



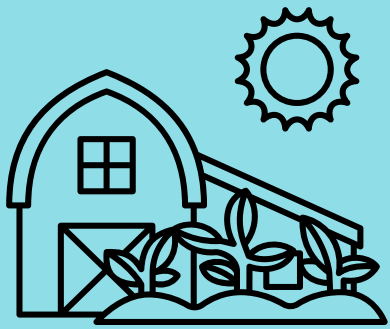
HISTORIC PRESERVATION

Respondents remarked favorably on the efforts to preserve historical sites.

Related comments were positive about revitalization of downtown areas and the importance of small town charm in the county.

GOALS AND OBJECTIVES SURVEY RESPONSES

DO YOU HAVE ANY SPECIFIC COMMENTS OR SUGGESTIONS YOU WOULD LIKE TO MAKE REGARDING THE GOALS AND OBJECTIVES OF JEFFERSON COUNTY OVER THE NEXT 20 YEARS?



PRESERVING RURAL CHARACTER

Preserving the rural landscapes, natural beauty, and historical heritage of Jefferson County is critical.



INFRASTRUCTURE AND SERVICES

In light of the growing population, residents want to see improving roads, public transportation, and healthcare facilities.



AFFORDABLE HOUSING

There is a lack of affordable housing opportunities in the county caused by pressures from growth in the region and short-term rentals.

EDUCATION



There need to be investments made into the school system to keep pace with surrounding counties and accomodate new students.

ECONOMIC DEVELOPMENT



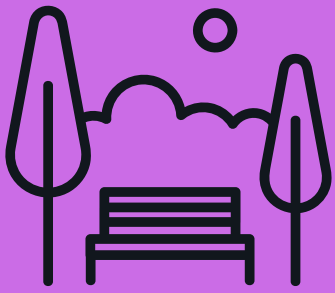
Residents want to attract businesses that contribute to the local economy and provide local jobs.

GOALS AND OBJECTIVES SURVEY RESPONSES



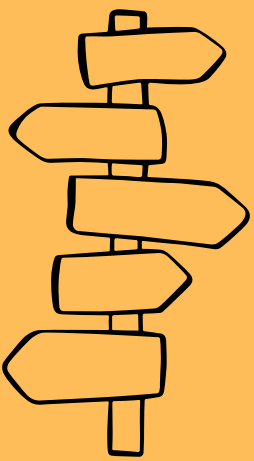
COMMUNITY ENGAGEMENT AND TRANSPARENCY

Direct community involvement in policy making and an emphasis on transparency in decision making was called for.



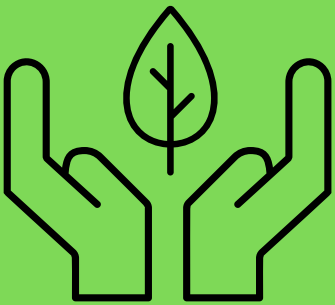
RECREATION AND AMENITIES

Activities, amenities, and entertainment directed at youth and families is sorely lacking in the community and needs attention.



TOURISM

Jefferson County's history, natural beauty, and recreation opportunities are a major draw for tourists and a large part of the economy that needs to be promoted.



ENVIRONMENTAL CONSERVATION

Residents are concerned about the health of the watersheds, implementing green initiatives, and protecting the environment.



QUALITY OF LIFE AND SAFETY

There are large concerns over traffic safety, need for additional medical facilities in the county, and general quality of life improvements.