



Annual Report 2024

www.jcprc.org
jeffersoncountywv.myrec.com



Our Mission

JCPRC exists to provide places and recreation opportunities for all people to gather, celebrate, contemplate, and engage in activities that promote health, well-being, community, and the environment. Its mission is to take a leadership role in harnessing resources for the purpose of planning, developing, implementing, evaluating, and operating a county-wide system of parks, recreation, conservation areas, and trail opportunities for people who live, work, and visit Jefferson County WV.

Or as we like to say...
A perfect place to grow.



Our Jefferson County Park Amenities

- | | |
|----------------------------------|-------------------------------------|
| ★ 12 Little League Fields | ★ 1 Dog Park |
| ★ 1 Softball Field | ★ 1 Amphitheater |
| ★ 4 Tennis Courts | ★ 1 Disc Golf Course |
| ★ 1 Recreation Center | ★ 1 Fishing Pond |
| ★ 20 Soccer Fields | ★ 8 Picnic Pavilions |
| ★ 7 Playgrounds | ★ 5+ Miles of Walking Trails |
| ★ 1 Basketball Court | ★ 10 Primitive Campsites |
| ★ 2 Multi-Purpose Fields | ★ 1 Maintenance Building |

Growth for future generations.

Phase II of the AMP construction began in 2024. The construction of a new, adjacent facility will be completed in 2025 and includes secure ticket booth, concession stand, restrooms, additional office space and it connects the AMP and community center into public sewer. The project was funded with a Housing and Urban Development federal earmark. Additionally, lights were added to the AMP venue which adds ambiance and safety to the venue.



Jefferson County Parks and Recreation Commission celebrated the ribbon cutting the first inclusive playground in Jefferson County. The project was funded with a matching grant from the Land and Water Conservation Fund and includes a poured rubber surface under the play elements, which makes it easier for children to run and wheelchairs or strollers to roll.

The 83-acre Moulton Park expansion was purchased in 2023. This year, a National Park Service Gateways Grant was awarded to develop a master plan. A steering committee was formed, public comment was taken, and a plan was developed that will be finalized in 2025. This plan will guide future development, taking into account the needs of the community and the stipulations of the conservation easement on the property.



Leetown Park went through some extensive changes in 2024. A baseball field was converted to a multi-purpose field, which will host soccer and lacrosse. Aging dugouts and washed-out gravel areas were refurbished and updated.



Our work: your park experience.

Jefferson County Parks encompass 400 acres of parkland, which includes seven county parks and two undeveloped properties. (300+ acres are maintained)

- 145 Hours per week mowing & trimming during peak season. (6 seasonal part-time staff & contract mowing service)
- 15 hours per week on ball field maintenance
- 50 hours per week on general maintenance and repairs
 - Mower Repairs
 - Tree Maintenance
 - General Facility Repairs
 - Administration
 - Fence Repairs
 - Painting
 - Work Orders



There were 791 total facility reservations in 2024.
Many facilities have reached maximum seasonal rental/usage capacity.

- 66 Mason Pavilion Rentals
 - 53 Veterans Pavilion Rentals
 - 119 Birthday Party Rentals
 - 79 Baseball Rentals
- 30 Soccer Field Rentals at South Jefferson Park
- 29 Mount Mission Pavilion Rentals
- 29 Leetown Park Pavilion Rentals
- 10 Column Venue Rentals (including 3 weddings)

Park Metric Comparison

National Average	Jefferson County
Residents per park 2,386	Residents per park 6,444
Acres of Parkland per 1000 residents 10.6	Acres of Parkland per 1000 residents 5.47
Full-time employees per 58,000 residents 51.62 <small>(of those, 23.92 or 46% are dedicated to maintenance)</small>	Full-time employees per 58,000 residents 11 <small>(of those, 2 or 18% are dedicated to maintenance)</small>
Operating expenditure per capita \$99.47	Operating expenditure per capita \$33.50
Revenue to operating expenditures 25.2%	Revenue to operating expenditures 50.2%

National Recreation and Park Association Data
Report 2024



Upcoming Capital Projects in 2025!

- AMP Phase II Opening*
- Moulton Park Concept Plan/Opening*
- South Jefferson Master Plan
- Pickleball Court Construction at James Hite Park*
- Sam Michaels Park Trail Development*
- Jefferson County Community Center Expansion Design
- New Park/School Concept Design in Shepherdstown
- Continued Leetown Park Renovations
- South Jefferson Park Ballfield Renovations

* Indicates Grant Funded Projects

Community Events

Single day events that bring the community together.

Activities & Programs

Enrollment:

7,934 resident enrollments
732 non-resident enrollments
8,669 total enrollments!

Drop-In Registration Numbers:

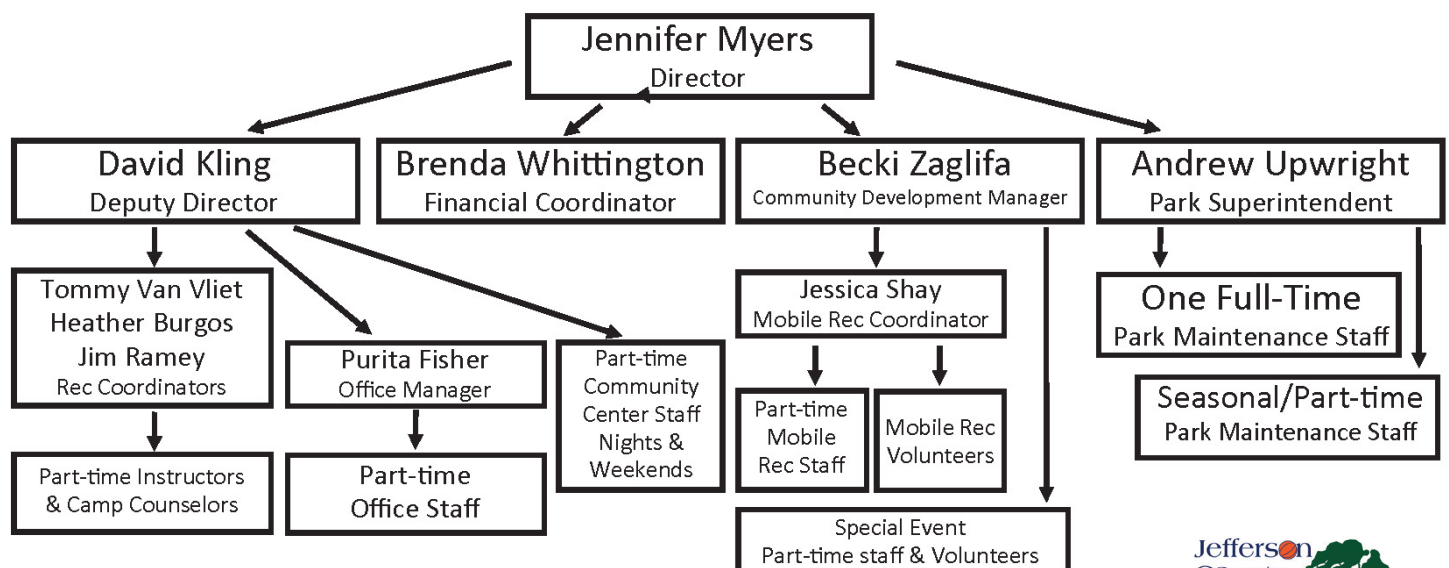
Total Drop-ins/Walk-ins: 4,963

- Membership Scans (Pickleball & Indoor Playground: 1249
- Adult Volleyball: 1300
- Indoor Soccer: 216
- Indoor Playground: 854
- Homeschool Indoor Play: 131
- Pickleball Cash Payments: 543

Ties & Tiaras: 290
Princess & Superhero Playdate: 94
Easter Eggstravanga: 300+
Movie in the Park: 1500+
Levitt AMP Music Series: 3000+
Kids Concert Series: 400+
Halloween Candy Drop: 154
Middle School Dance: 300+
Wee Warrior Dash: 350+
Santa's Polar Party: 252
Confetti Countdown: 158
Fireworks: 8000+

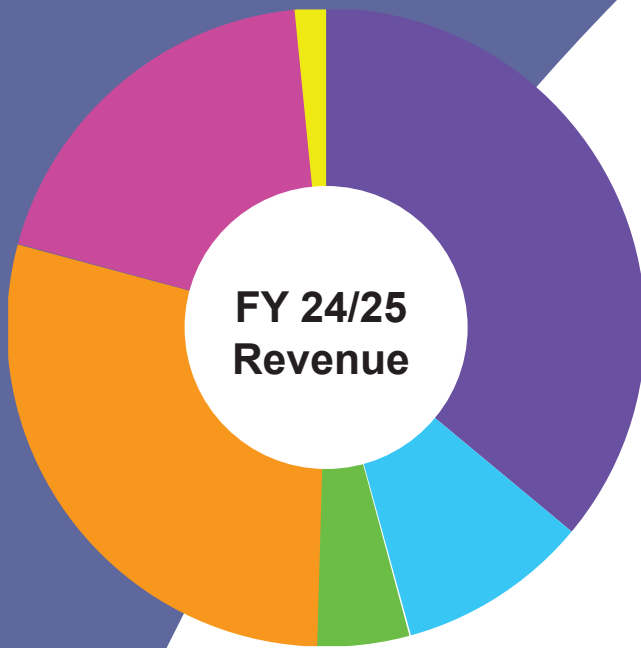
In 2024, JCPRC offered 603 programs.

Programs are run to generate a minimum 30% cost recovery.

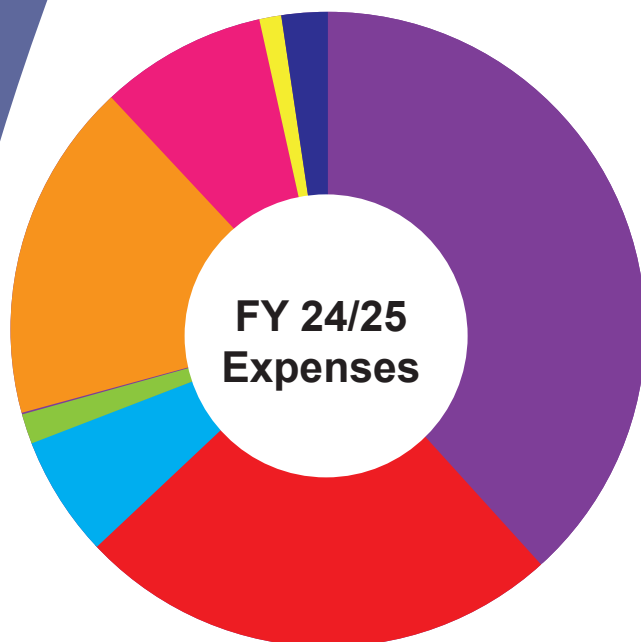
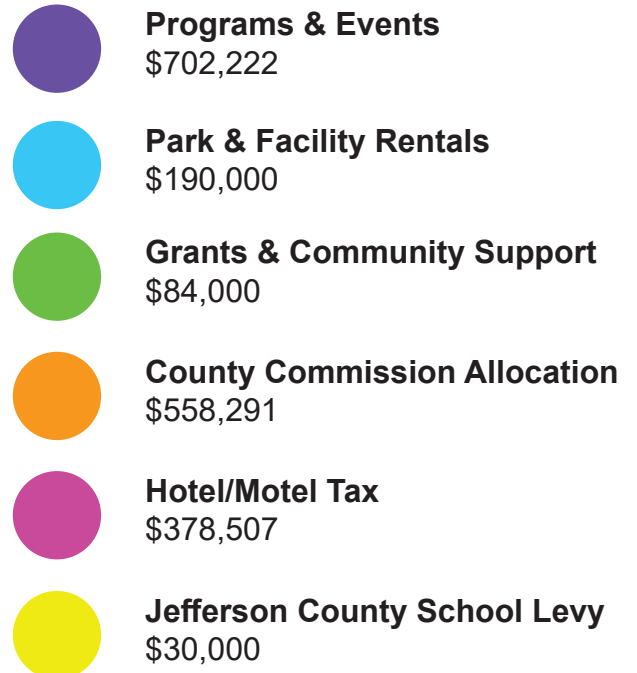


Finances

Income & Expenses



**FY 24/25
Revenue**



**FY 24/25
Expenses**



*budget number are estimated, not exact.

Biggest 2024 Successes

Programming

Over 600 programs and community events for residents and visitors in Jefferson county, including youth and adults, generate over 50% of park revenue which is double the National Average of just over 25%. (NRPA Agency Performance Review)

Partnerships

Created partnerships and MOU's with organizations in Jefferson County.

Working together to provide MORE activities and facilities for the community rather than competing for funding and participation.

Grants

Applied for, and received nearly \$3 million in grant funding over the last five years.

Grant funding has allowed JCPRC to increase facilities, grow sports offerings, and bring musicians to the AMP.

Staff

The Jefferson County Parks and Recreation Commission Board has prioritized the recruitment and the development of a skilled and dedicated team.

Biggest 2024 Challenges

Limited Facilities

The Jefferson County Community Center is nearing capacity for programming and rentals. There is also a lack of indoor & outdoor facilities to accommodate growing sports or community needs.

Limited Budget

The Jefferson County population continues to increase while attracting new residents from other communities and states. As the community grows, the demand for more facilities, programs, and activities continues to grow. Due to limited space and staff, revenue growth is currently maximized.





Jennifer Myers, Director
David Kling, Deputy Director
Andrew Upwright, Park Manager
Becki Zaglifa, Community Development Manager
Tommy Van Vliet, Recreation Coordinator
Heather Burgos, Recreation Coordinator
Jim Ramey, Recreation Coordinator
Jessica Shay, Mobile Recreation Coordinator
Brenda Whittington, Financial Coordinator
Purita Fisher, Office Manager

304.728.3207
www.jcprc.org
jeffersoncountywv.myrec.com