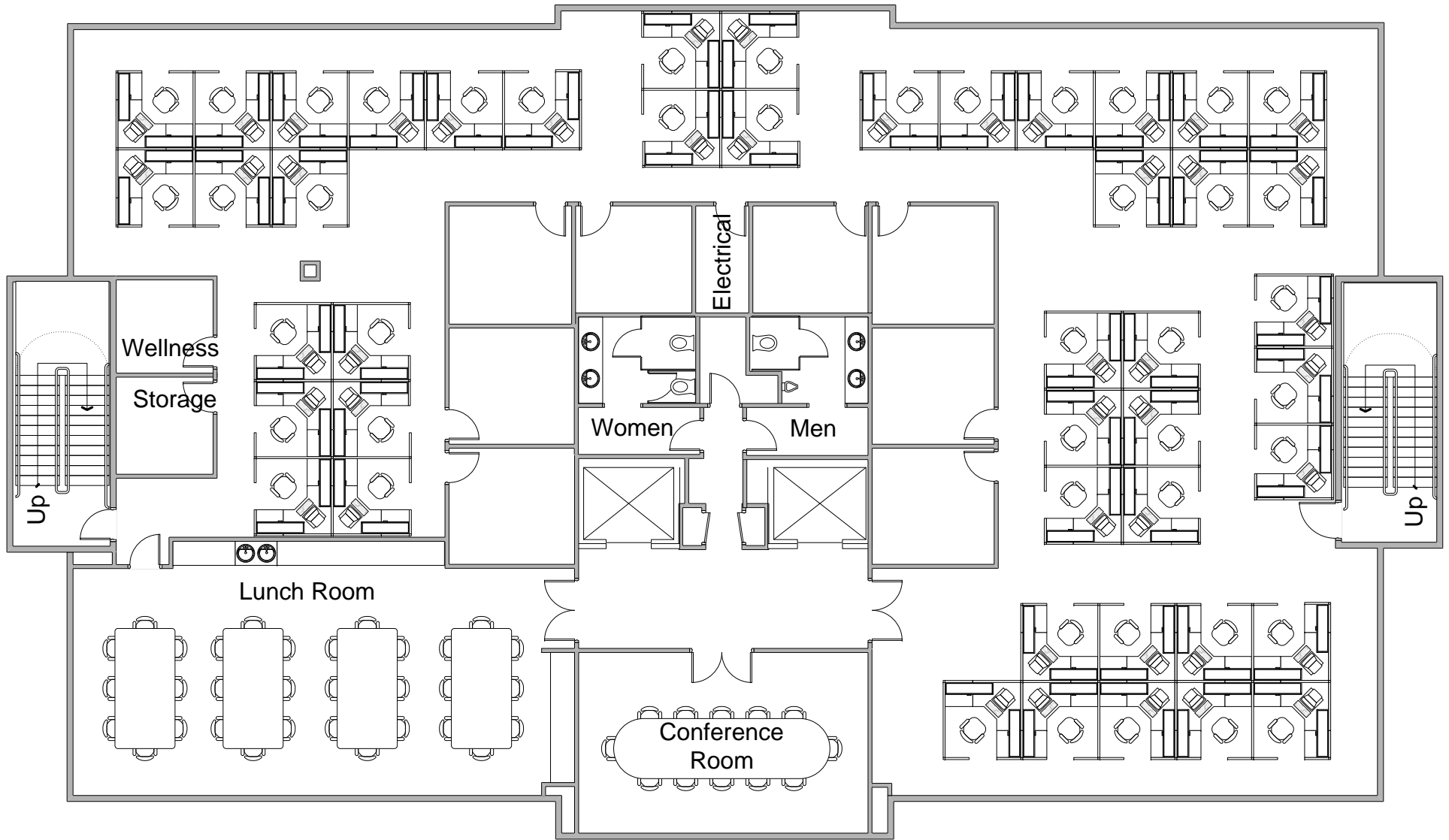
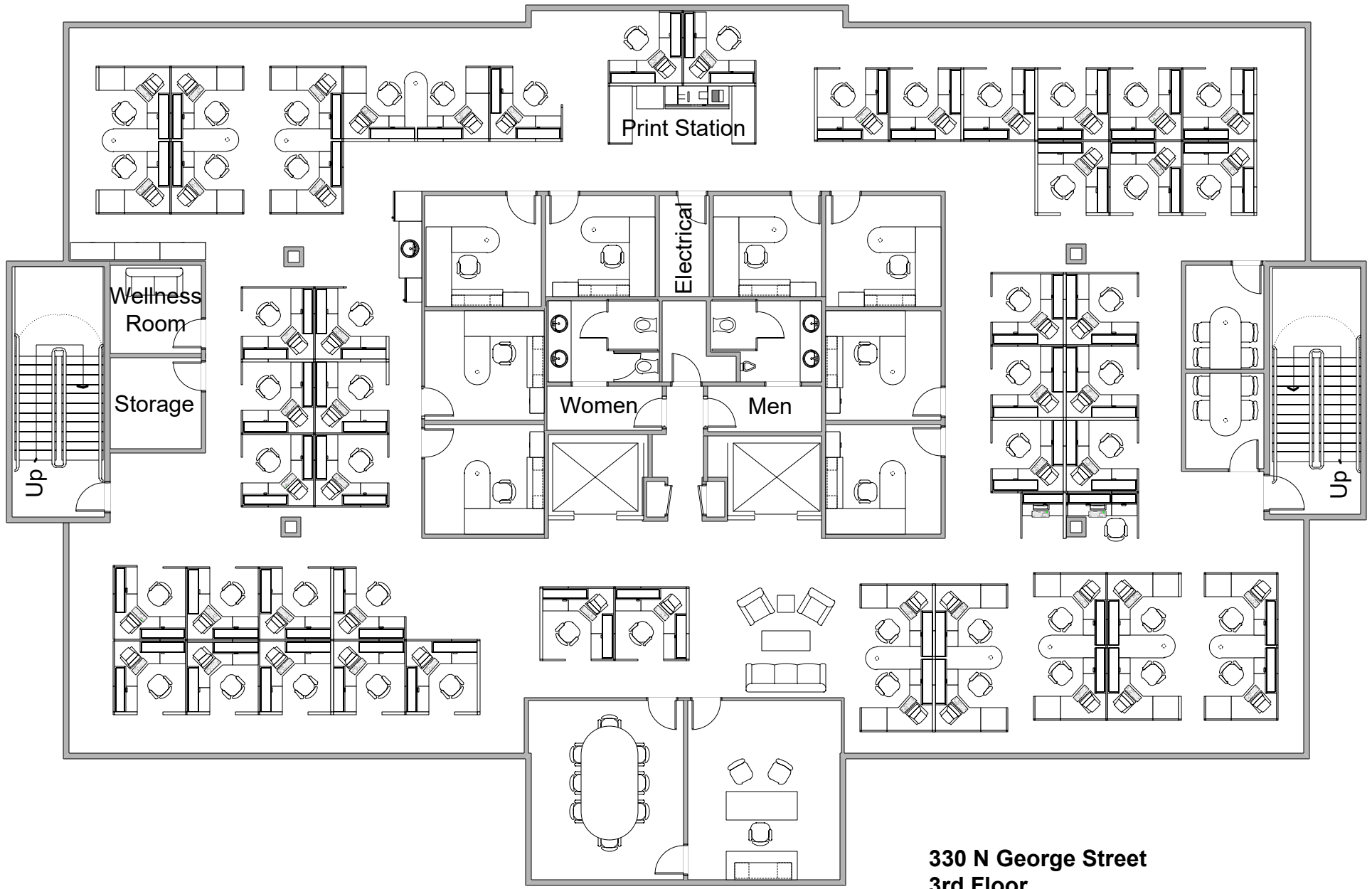
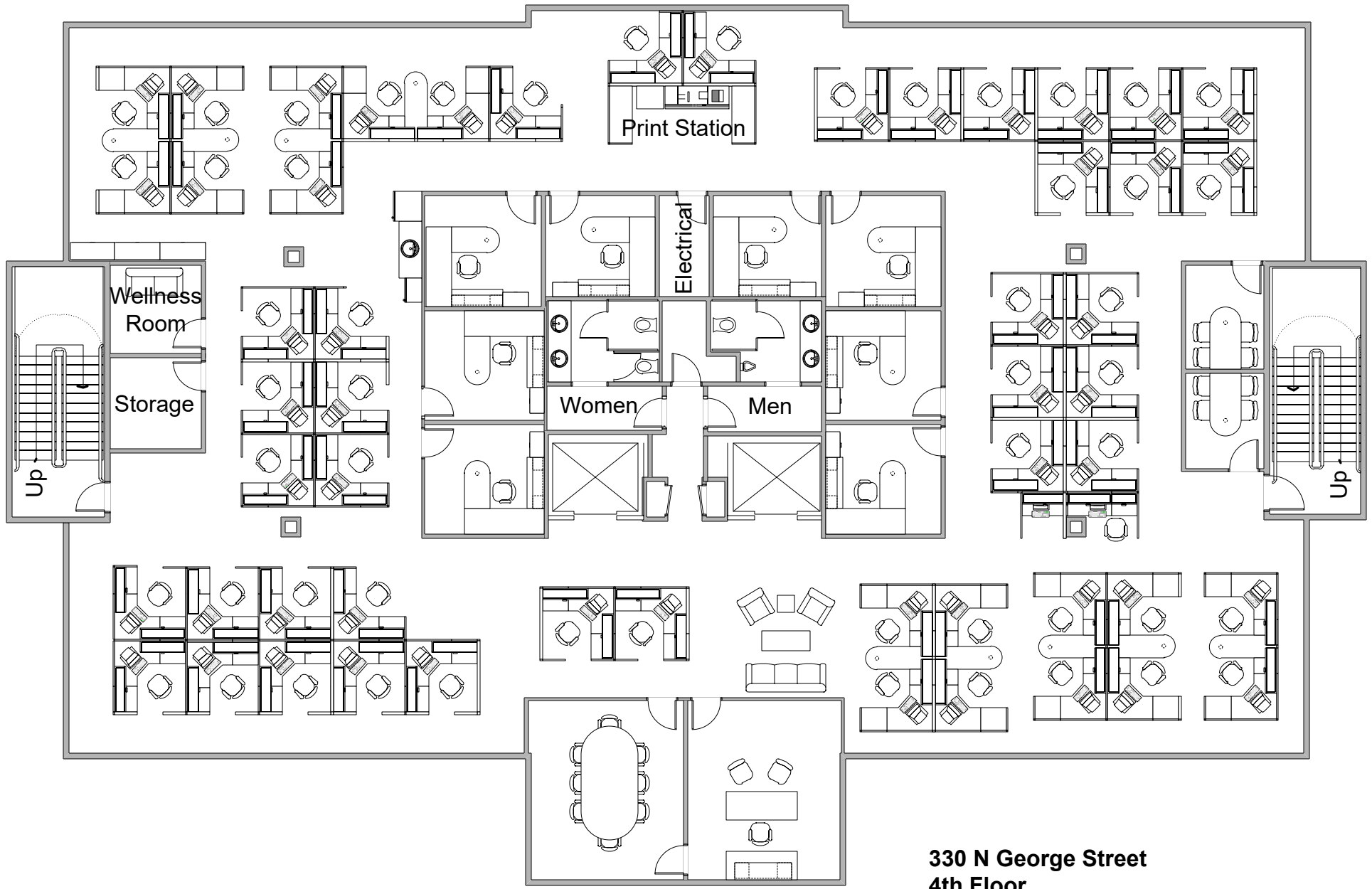


**330 N George Street
1st. Floor**



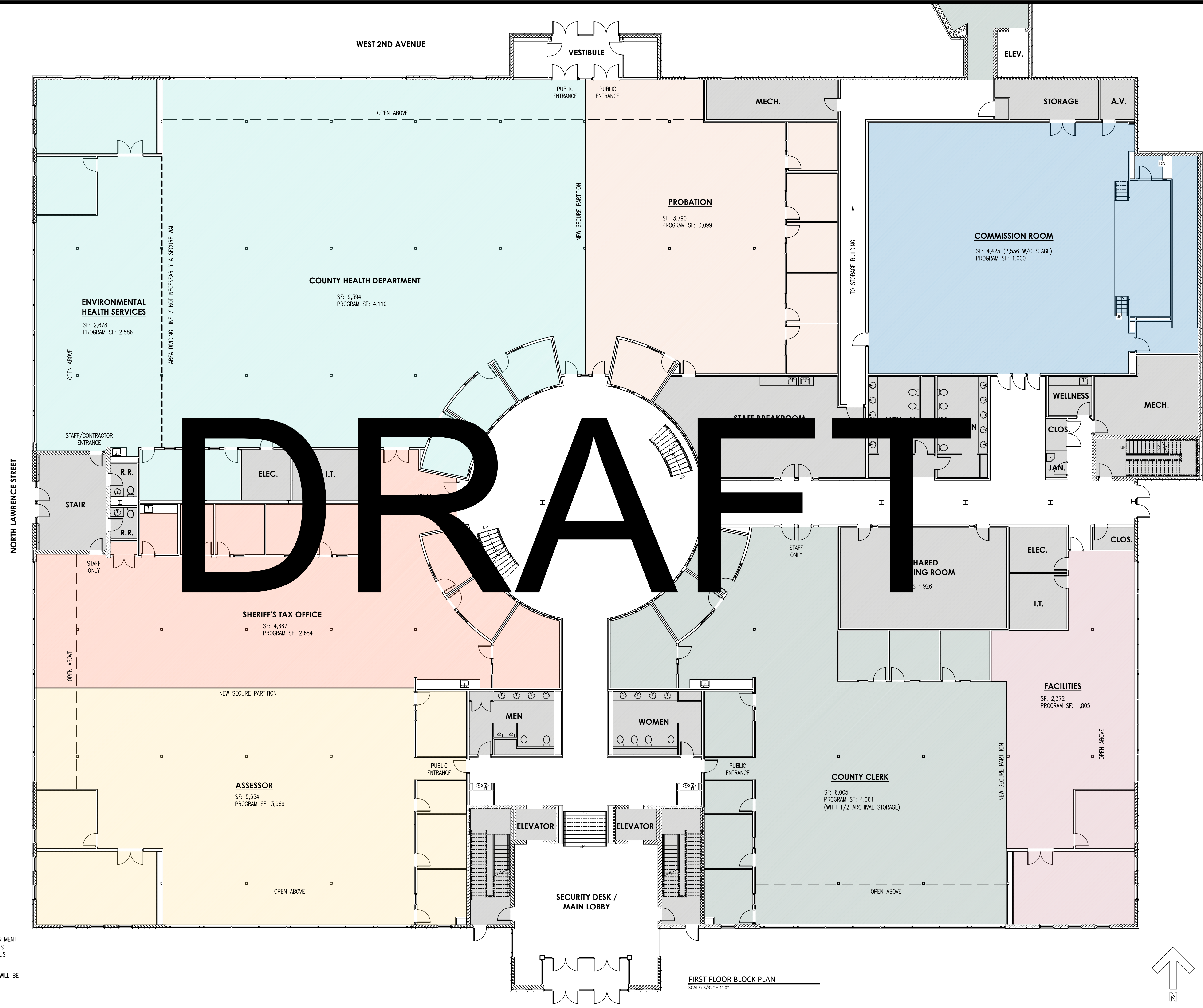
**330 N. George St.
2nd Floor**





**330 N George Street
4th Floor**

- LEGEND**
- EXISTING BUILDING INFRASTRUCTURE (VERTICAL CIRCULATION, MECH. ROOMS, ETC.) AND SHARED SPACES (TRAINING ROOMS, RESTROOMS)
 - ASSESSOR'S OFFICE
 - COUNTY CLERK
 - COUNTY COMMISSION
 - DEVELOPMENT AUTHORITY
 - ENGINEERING, PLANNING, AND ZONING
 - ENVIRONMENTAL HEALTH SERVICES
 - FACILITIES AND FLEET MANAGEMENT
 - FARMLAND PROTECTION BOARD
 - HEALTH DEPARTMENT
 - IT / GIS
 - PROBATION
 - SHERIFF'S TAX OFFICE
 - WVU EXTENSION

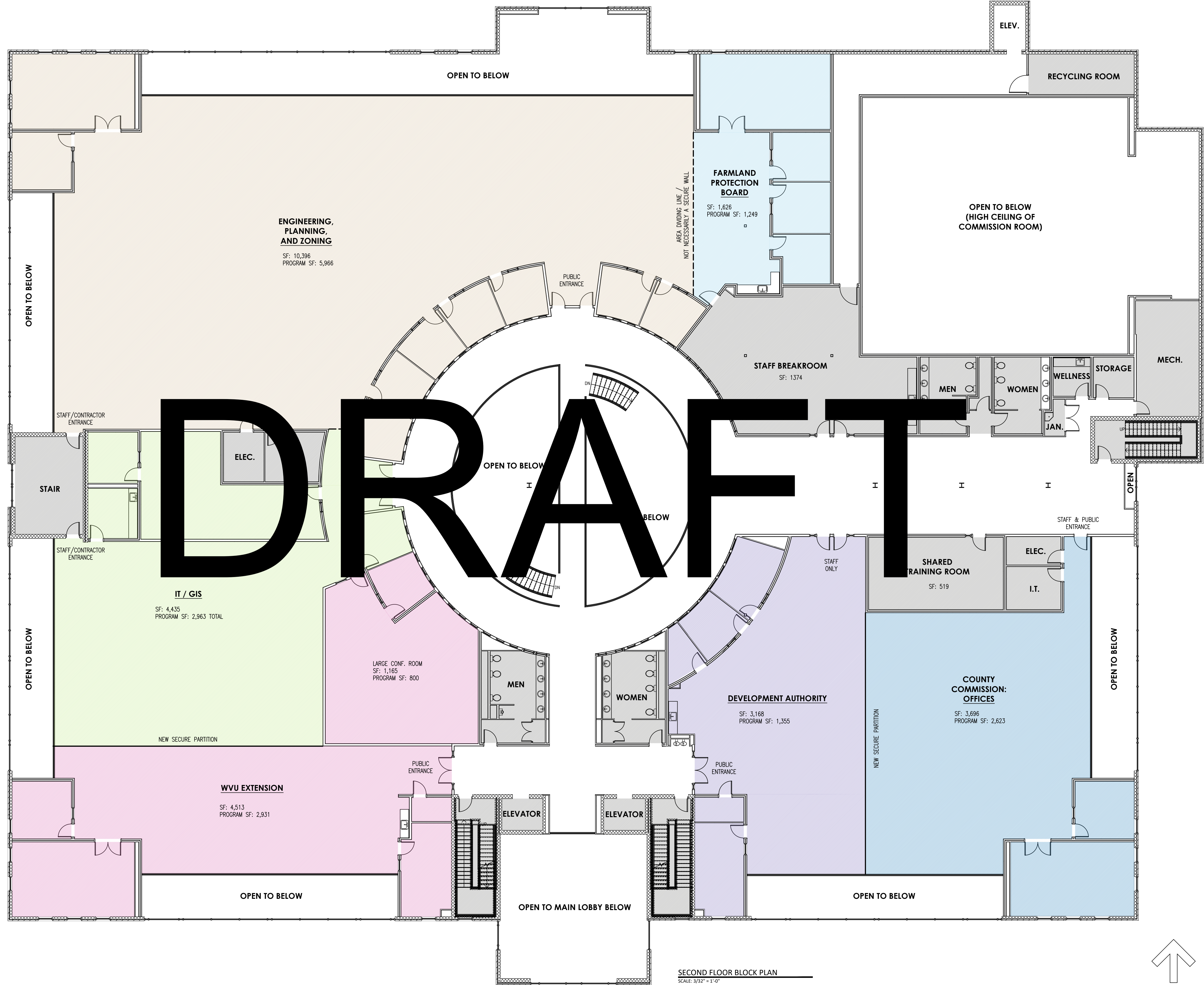


- NOTES**
1. THIS PLAN SHOWS POTENTIAL LOCATIONS OF EACH DEPARTMENT BASED ON INFORMATION GAINED FROM THE DESIGN TEAM'S INTERVIEWS AND SITE VISITS WITH EACH DEPARTMENT, PLUS INFORMATION FROM THE U.S. COURTS DESIGN GUIDE.
 2. SQUARE FOOTAGES ARE APPROXIMATE.
 3. SECURITY, ACOUSTICS, NEW WALLS, AND OTHER DETAILS WILL BE ADDRESSED DURING THE DESIGN PHASE.

FIRST FLOOR BLOCK PLAN
SCALE: 3/32" = 1'-0"

LEGEND

- EXISTING BUILDING INFRASTRUCTURE (VERTICAL CIRCULATION, MECH. ROOMS, ETC.) AND SHARED SPACES (TRAINING ROOMS, RESTROOMS)
- ASSESSOR'S OFFICE
- COUNTY CLERK
- COUNTY COMMISSION
- DEVELOPMENT AUTHORITY
- ENGINEERING, PLANNING, AND ZONING
- ENVIRONMENTAL HEALTH SERVICES
- FACILITIES AND FLEET MANAGEMENT
- FARMLAND PROTECTION BOARD
- HEALTH DEPARTMENT
- IT / GIS
- PROBATION
- SHERIFF'S TAX OFFICE
- WVU EXTENSION



- NOTES**
1. THIS PLAN SHOWS POTENTIAL LOCATIONS OF EACH DEPARTMENT BASED ON INFORMATION GAINED FROM THE DESIGN TEAM'S INTERVIEWS AND SITE VISITS WITH EACH DEPARTMENT, PLUS INFORMATION FROM THE U.S. COURTS DESIGN GUIDE.
 2. SQUARE FOOTAGES ARE APPROXIMATE.
 3. SECURITY, ACOUSTICS, NEW WALLS, AND OTHER DETAILS WILL BE ADDRESSED DURING THE DESIGN PHASE.

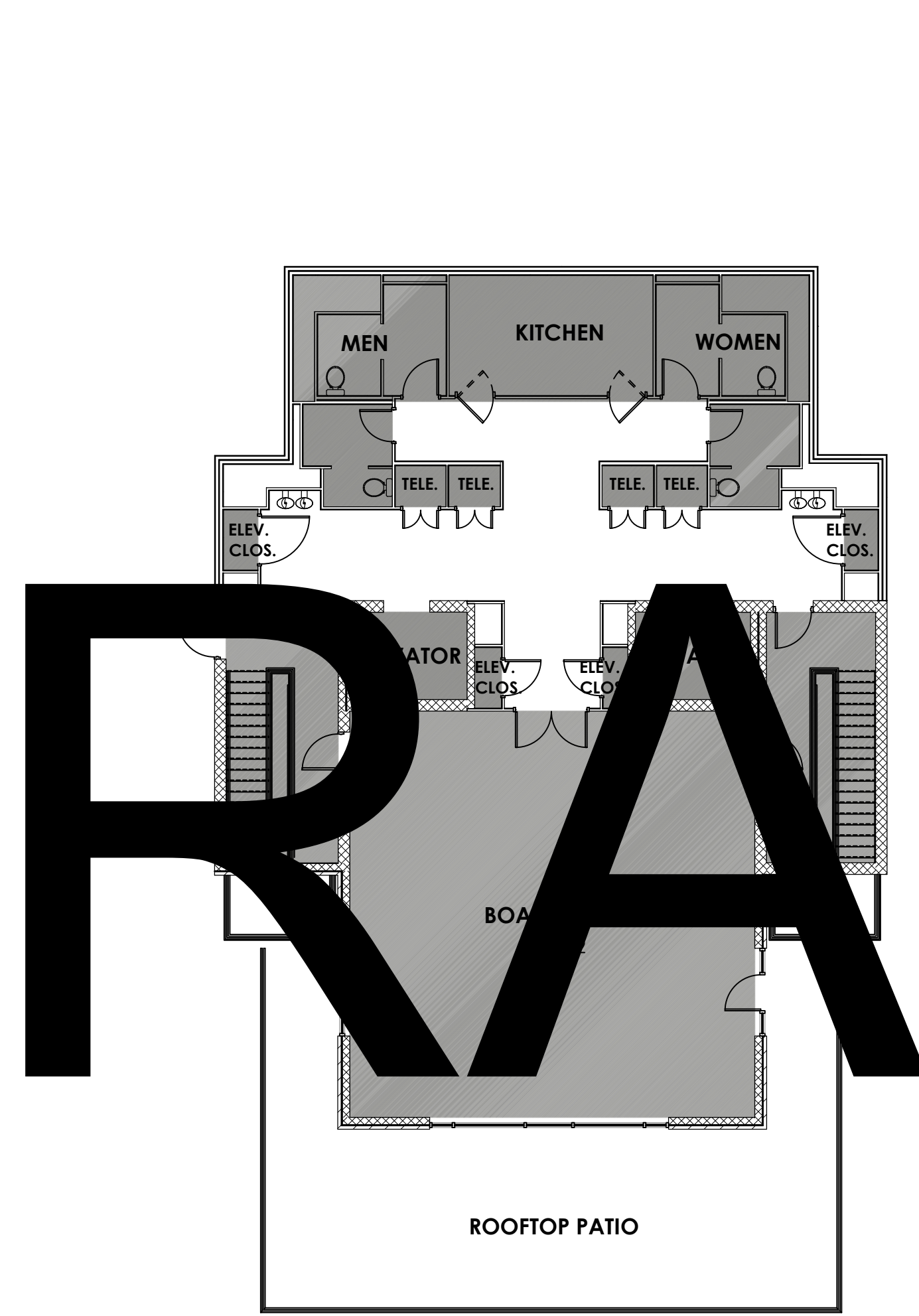
SECOND FLOOR BLOCK PLAN
SCALE: 3/32" = 1'-0"

LEGEND

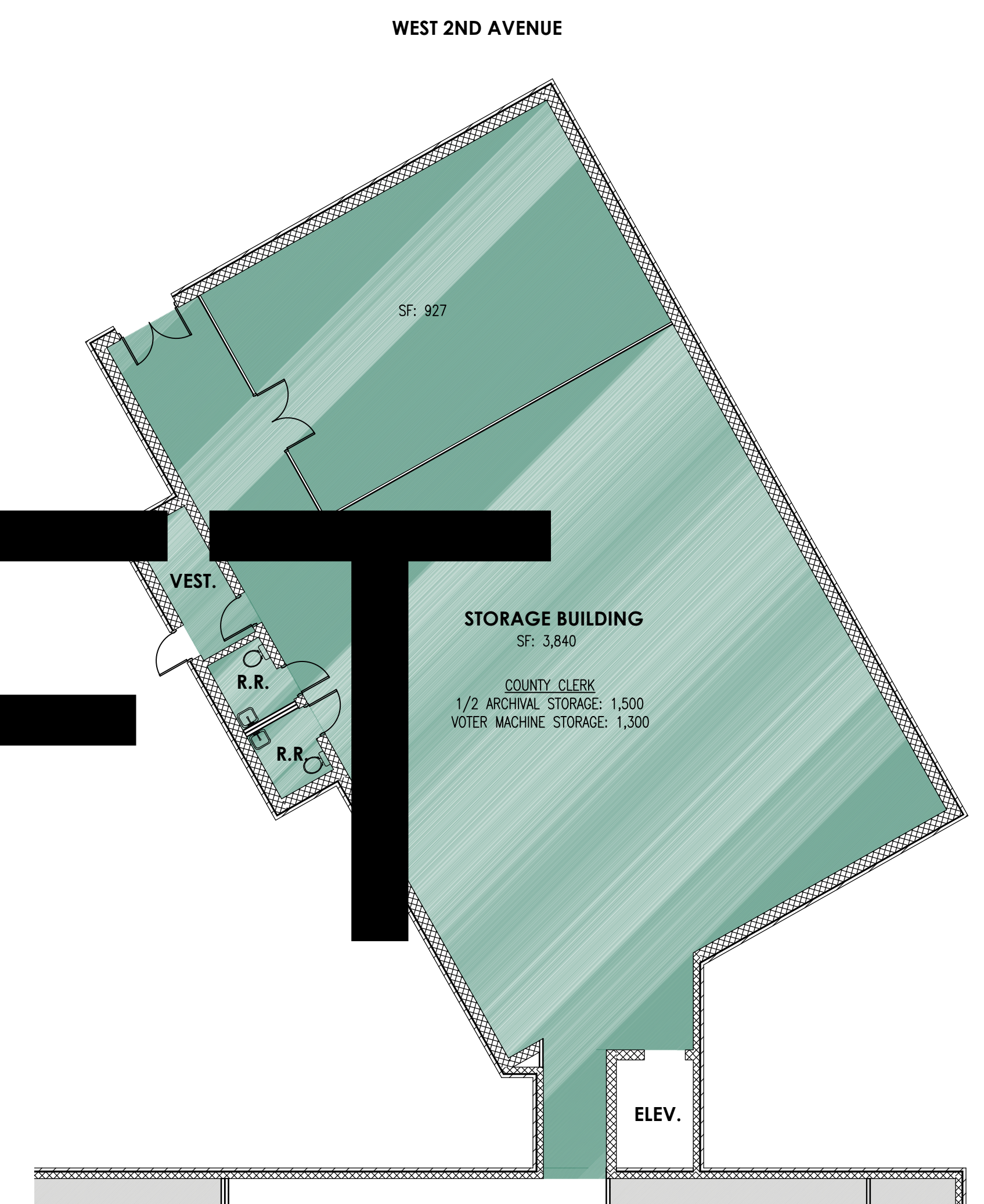
- EXISTING BUILDING INFRASTRUCTURE (VERTICAL CIRCULATION, MECH. ROOMS, ETC.) AND SHARED SPACES (TRAINING ROOMS, RESTROOMS)
- ASSESSOR'S OFFICE
- COUNTY CLERK
- COUNTY COMMISSION
- ENGINEERING, PLANNING, AND...
- ENVIRONMENTAL HEALTH SERVICES
- FACILITIES AND FLEET MANAGEMENT
- FARMLAND PROTECTION BOARD
- HEALTH DEPARTMENT
- IT / GIS
- PROBATION
- SHERIFF'S TAX OFFICE
- WVU EXTENSION

NOTES

1. THIS PLAN SHOWS POTENTIAL LOCATIONS OF EACH DEPARTMENT BASED ON INFORMATION GAINED FROM THE DESIGN TEAM'S INTERVIEWS AND SITE VISITS WITH EACH DEPARTMENT, PLUS INFORMATION FROM THE U.S. COURTS DESIGN GUIDE.
2. SQUARE FOOTAGES ARE APPROXIMATE.
3. SECURITY, ACOUSTICS, NEW WALLS, AND OTHER DETAILS WILL BE ADDRESSED DURING THE DESIGN PHASE.



THIRD FLOOR
SCALE: 3/32" = 1'-0"



STORAGE BUILDING
SCALE: 3/32" = 1'-0"

